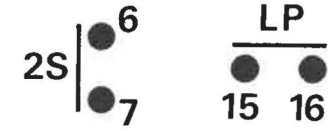
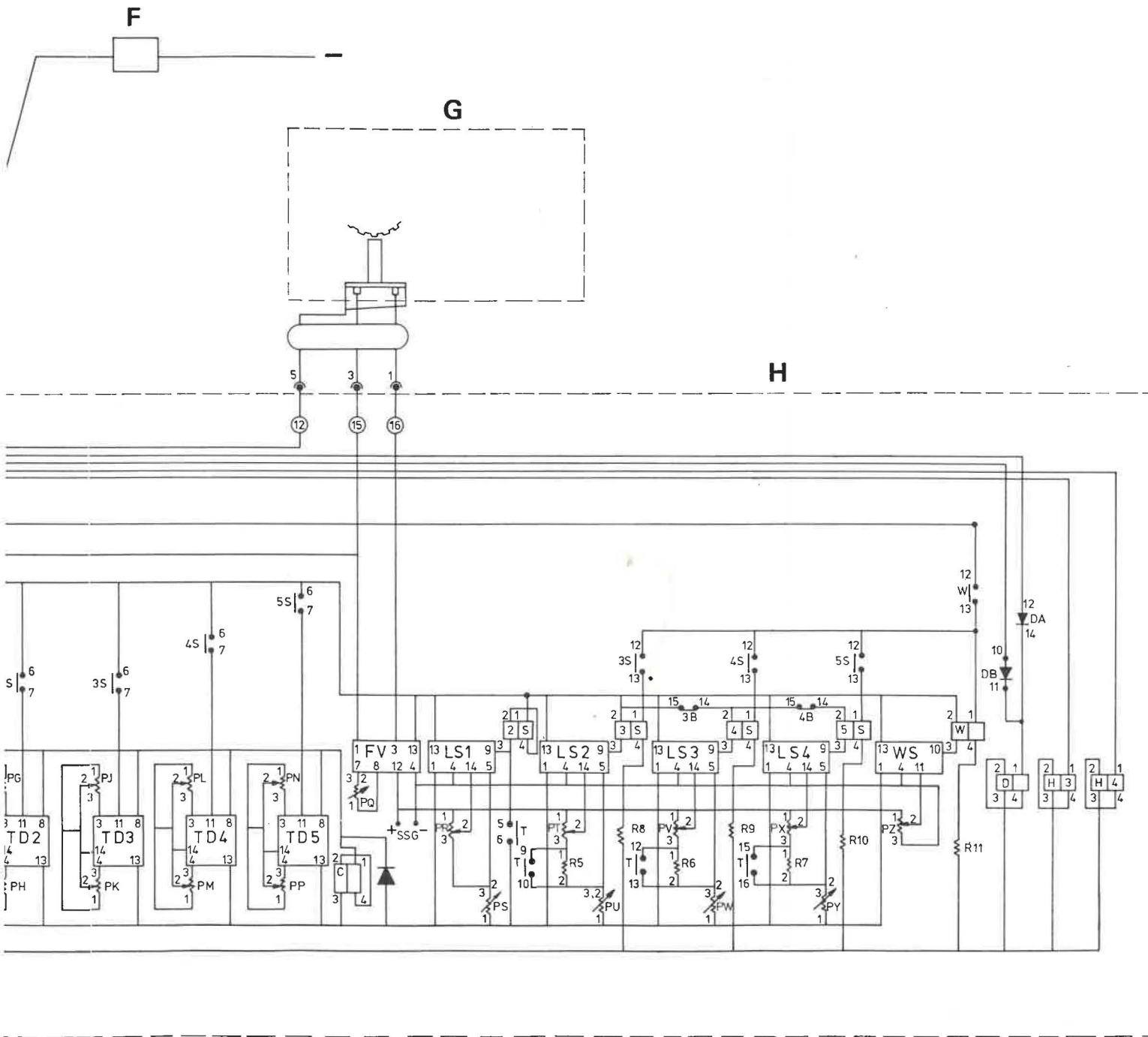
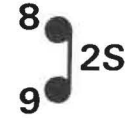


- A - PERFORMANCE LEVEL SWITCH
- B - PROTECTION UNIT—LOW AIR PRESSURE
- C - THROTTLE DIP UNIT
- D - START SWITCH—AUX. POSITION
- E - SELECTOR SWITCH
- F - START RELAY
- G - PERCEPTION HEAD
- H - TRANSLATOR
- J - ELECTRO-PNEUMATIC VALVE

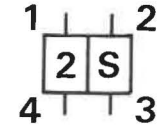
R8,R9,R10,R11 = 270 Ω ± 5% 3 WATT



Secondary Relay Contacts 6-7, 9-10, 12-13 and 15-16
Normally Open. Relay contacts 2S 6-7 and LP 15-16 shown.



Secondary Relay Contacts 6-5, 9-8, 12-11 and 14-15
Normally Closed. Relay contacts 2S 9-8 shown.



Secondary Relay Coils Relay coil 2S shown (both coils 1-4 and 2-3 used).



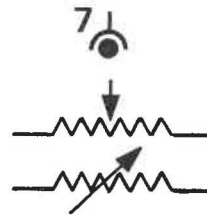
'Free Diode'



Diode in Module (DB) Between pins 9-13



Terminals



Pins in Multi-pin Sockets

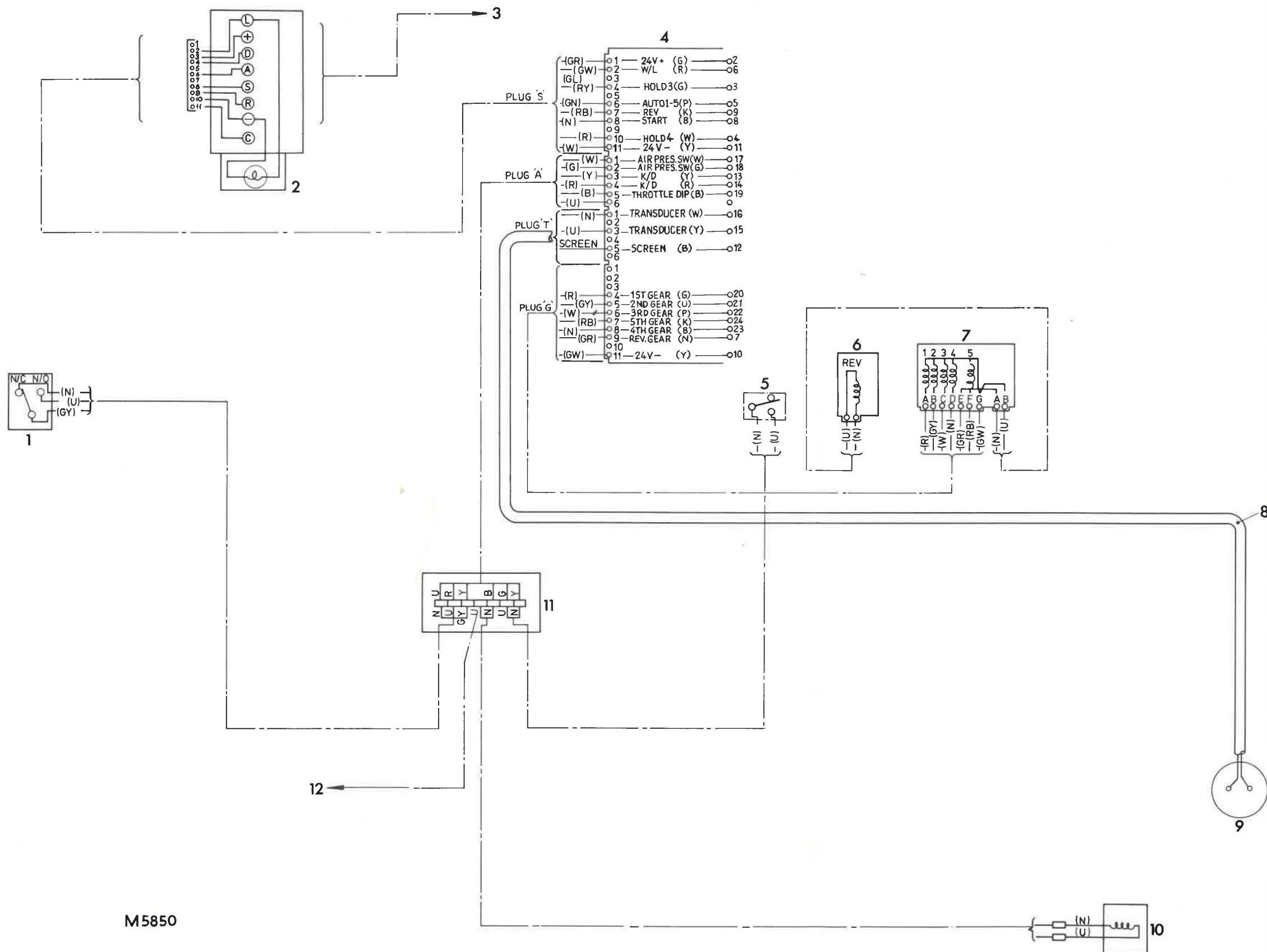
Control Potentiometers

- PERFORMANCE LEVEL SWITCH
- PROTECTION UNIT-LOW AIR PRESSURE
- THROTTLE DIP UNIT
- START SWITCH-AUX. POSITION
- SELECTOR SWITCH
- START RELAY
- PERCEPTION HEAD
- TRANSLATOR
- ELECTRO-PNEUMATIC VALVE

R8,R9,R10,R11 = 270 Ω ± 5% 3 WATT

M5274A

AUTOMATIC CONTROL CIRCUIT DIAGRAM

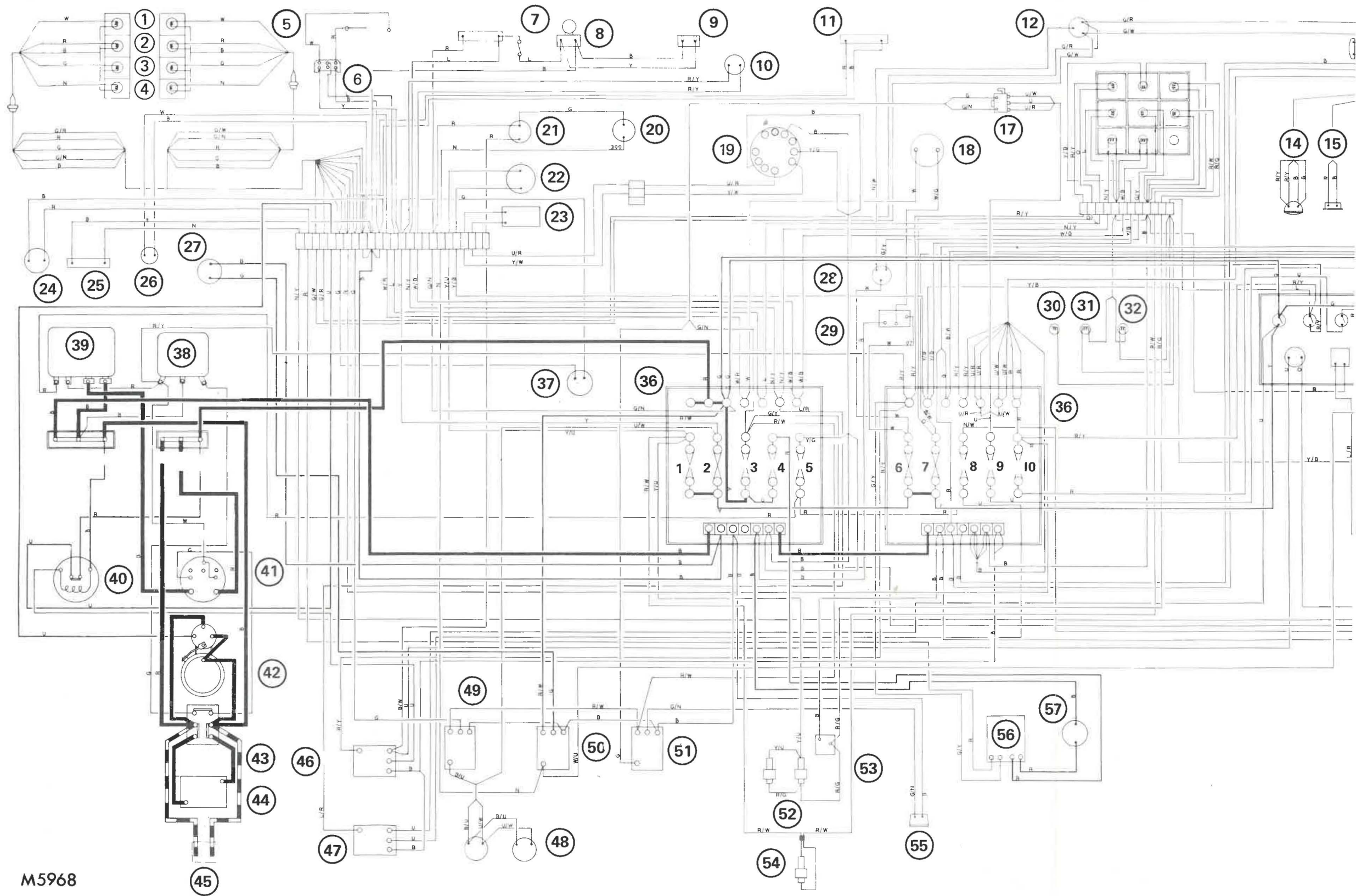


M5850

AUTOMATIC CONTROL SYSTEM CIRCUIT DIAGRAM

AUTOMATIC CONTROL SYSTEM CIRCUIT DIAGRAM

- | | | |
|---|-----------------------------|---------------------------------|
| 1. Switch, performance level | 5. Switch, low air pressure | 9. Transducer |
| 2. Switch, selector | 6. E.P. Valve 1-way | 10. Throttle dip valve |
| 3. Connection, see vehicle Wiring Diagram | 7. E.P. Valve 5-way | 11. Terminal box |
| 4. Pins, translator terminals | 8. Cable co-axial 2-core | 12. Vehicle negative connection |



M5968

KEY TO WIRING DIAGRAM

- 1. Rear direction indicator light
- 2. Tail light
- 3. Stop light
- 4. Reversing light
- 5. Header tank probe
- 6. 'Radolarm' unit
- 7. Engine door warning light switch
- 8. Engine compartment light
- 9. Engine compartment socket
- 10. Emergency door warning light
- 11. Rear registration panel
- 12. Direction indicator switch
- 13. Front direction indicator light
- 14. Fog light
- 15. Side light
- 16. Headlight

- 17. Horn push and dipswitch
- 18. Temperature gauge
- 19. Speedometer
- 20. Engine stop switch
- 21. Engine start switch
- 22. Oil pressure switch
- 23. Speedometer pulse generator
- 24. Fan thermal switch
- 25. Cold start thermostat
- 26. Temperature transmitter
- 27. Engine stop solenoid
- 28. Direction indicator unit
- 29. Voltage stabilizer
- 30. Speedometer light
- 31. Air gauge light
- 32. Temperature gauge light

- 33. Switch panel
- 34. Windscreen wiper
- 35. Cold start relay
- 36. Fusebox:
 - 1. Aux. - 10 amp
 - 2. Aux. - 10 amp
 - 3. Aux. - 10 amp
 - 4. Fan - 25 amp
 - 5. Speedo - 5 amp
- 37. Reverse light switch
- 38. Regulator
- 39. Reverse polarity relay and pulse clipper
- 40. Starter relay
- 41. Alternator
- 42. Starter motor
- 43. Battery isolation switch
- 44. Batteries
- 45. Assisted starter socket (when fitted)
- 46. Starter protection relay
- 47. Starter inhibition relay
- 48. Stop light switches
- 49. Stop light relay
- 50. Engine stop relay
- 51. Horn relay
- 52. Low pressure switches
- 53. Low pressure buzzer
- 54. Gearbox low pressure switches
- 55. Horn
- 56. Fan relay
- 57. Fan motor

- 43. Battery isolation switch
- 44. Batteries
- 45. Assisted starter socket (when fitted)
- 46. Starter protection relay
- 47. Starter inhibition relay
- 48. Stop light switches
- 49. Stop light relay
- 50. Engine stop relay
- 51. Horn relay
- 52. Low pressure switches
- 53. Low pressure buzzer
- 54. Gearbox low pressure switches
- 55. Horn
- 56. Fan relay
- 57. Fan motor

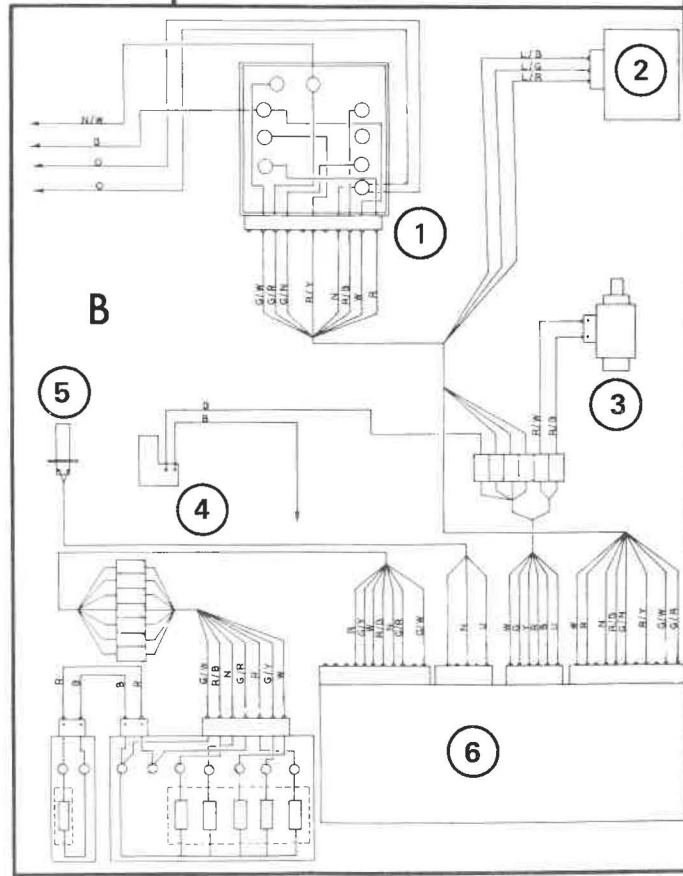
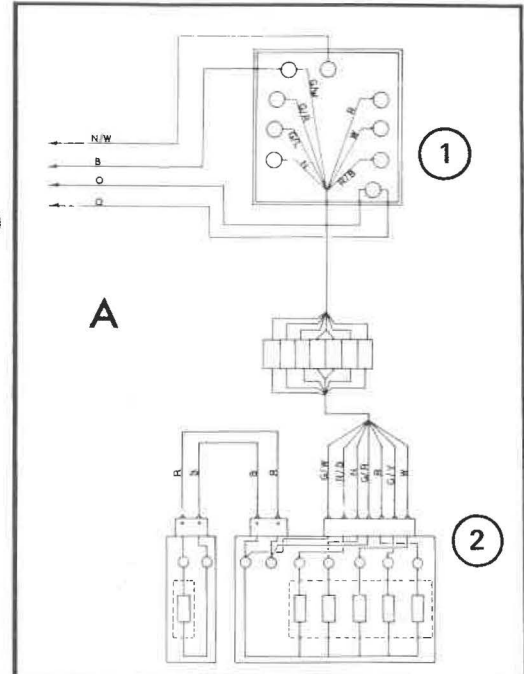
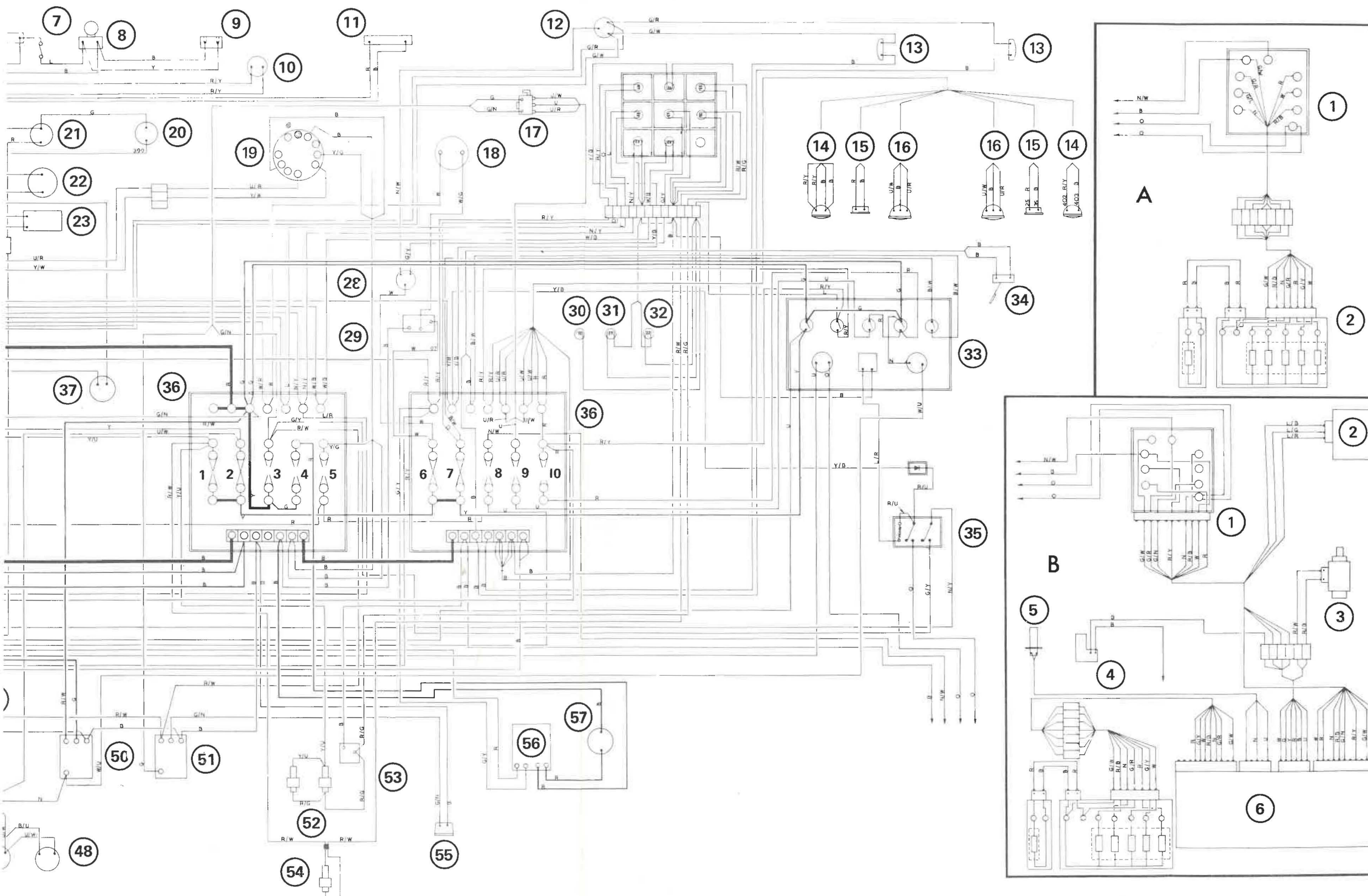
A - SEMI-AUTOMATIC TRANSMISSION CIRCUIT

- 1. Gear selector switch
- 2. E.P. valves

B - FULLY AUTOMATIC TRANSMISSION CIRCUIT

- 1. Gear selector switch
- 2. Performance level switch
- 3. Low air pressure switch
- 4. Throttle dip E.P. valve
- 5. Road speed transducer
- 6. Translator





KEY TO WIRING DIAGRAM

- 6. Aux. - 10 amp
- 7. Aux. - 10 amp
- 8. Gearbox - 5 amp
- 9. Head - 10 amp
- 10. Side/tail and fog - 10 amp

- 43. Battery isolation switch
- 44. Batteries
- 45. Assisted starter socket (when fitted)
- 46. Starter protection relay
- 47. Starter inhibition relay
- 48. Stop light switches
- 49. Stop light relay
- 50. Engine stop relay
- 51. Horn relay
- 52. Low pressure switches
- 53. Low pressure buzzer
- 54. Gearbox low pressure switches
- 55. Horn
- 56. Fan relay
- 57. Fan motor

A - SEMI-AUTOMATIC TRANSMISSION CIRCUIT

- 1. Gear selector switch
- 2. E.P. valves

B - FULLY AUTOMATIC TRANSMISSION CIRCUIT

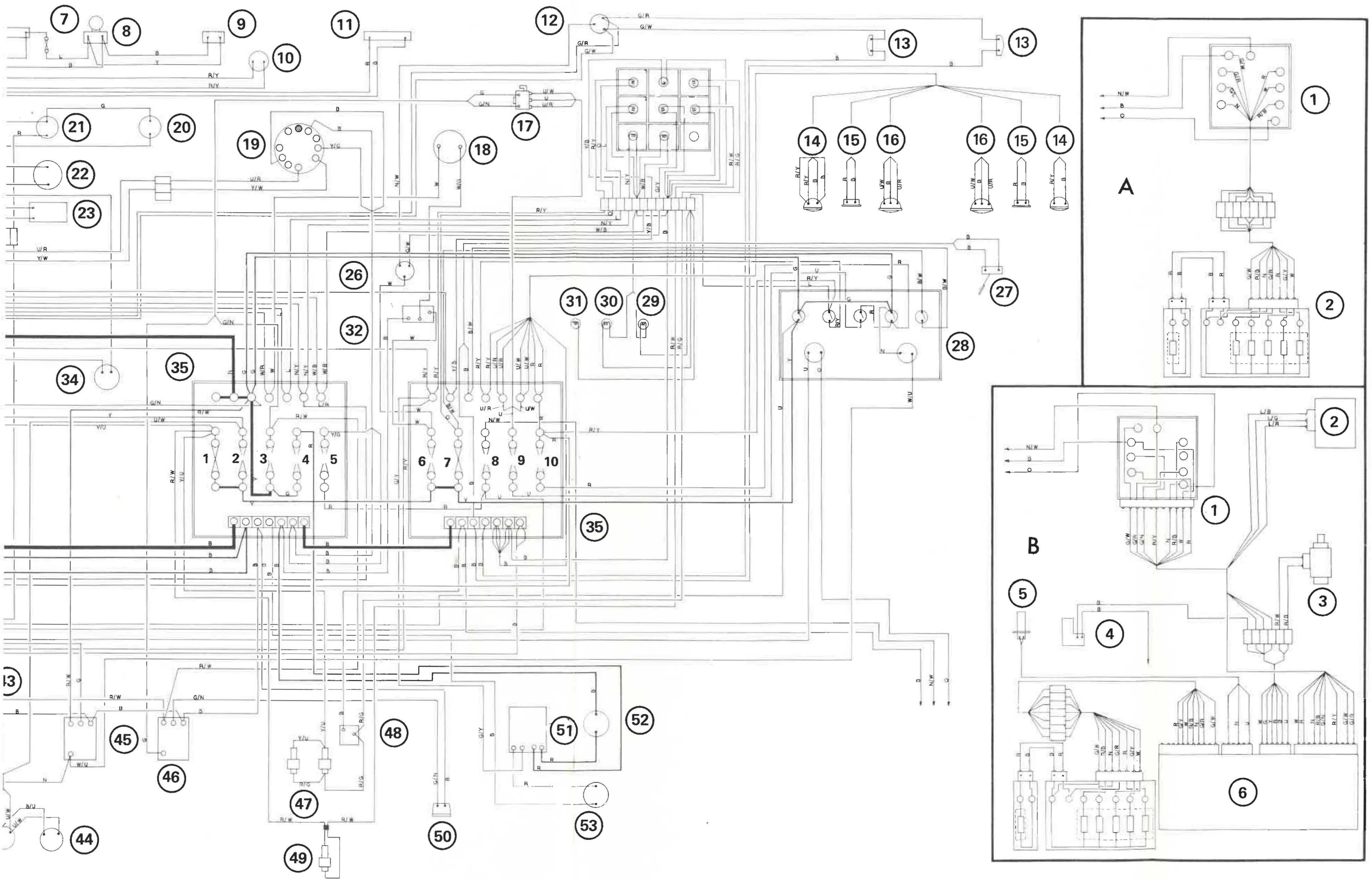
- 1. Gear selector switch
- 2. Performance level switch
- 3. Low air pressure switch
- 4. Throttle dip E.P. valve
- 5. Road speed transducer
- 6. Translator

CABLE COLOUR CODE

N.	Brown	Y.	Yellow
U.	Blue	B.	Black
R.	Red	S.	Slate
G.	Green	L.	Lilac
W.	White	O.	Orange

When a cable has two colour code letters the first denotes the main colour and the second denotes the tracer colour

WIRING DIAGRAM - BUTEC EQUIPMENT



KEY TO WIRING DIAGRAM

- board
- ght switch
- 10 amp
- 10 amp
- 10 amp
- 25 amp
- o - 5 amp
- r
- otor
- olation switch
- arter socket
- hibition relay
- rotection relay
- t relay

- 44. Stop light switches
- 45. Engine stop relay
- 46. Horn relay
- 47. Low pressure switches
- 48. Low pressure buzzer
- 49. Gearbox low pressure switches
- 50. Horn
- 51. Fan relay
- 52. Fan motor
- 53. Fan thermal switch

A. - SEMI-AUTOMATIC TRANSMISSION CIRCUIT

- 1. Gear selector switch
- 2. E.P. valves

B. - FULLY AUTOMATIC TRANSMISSION CIRCUIT

- 1. Gear selector switch
- 2. Performance level switch
- 3. Low air pressure switch
- 4. Throttle dip E.P. valve
- 5. Road speed transducer
- 6. Translator

COLOUR CABLE CODE

- | | |
|----------|-----------|
| N. Brown | Y. Yellow |
| U. Blue | B. Black |
| R. Red | S. Slate |
| G. Green | L. Lilac |
| W. White | O. Orange |

When a cable has two colour code letters the first denotes the main colour and the second denotes the tracer colour.

WIRING DIAGRAM - C.A.V. EQUIPMENT