

A1

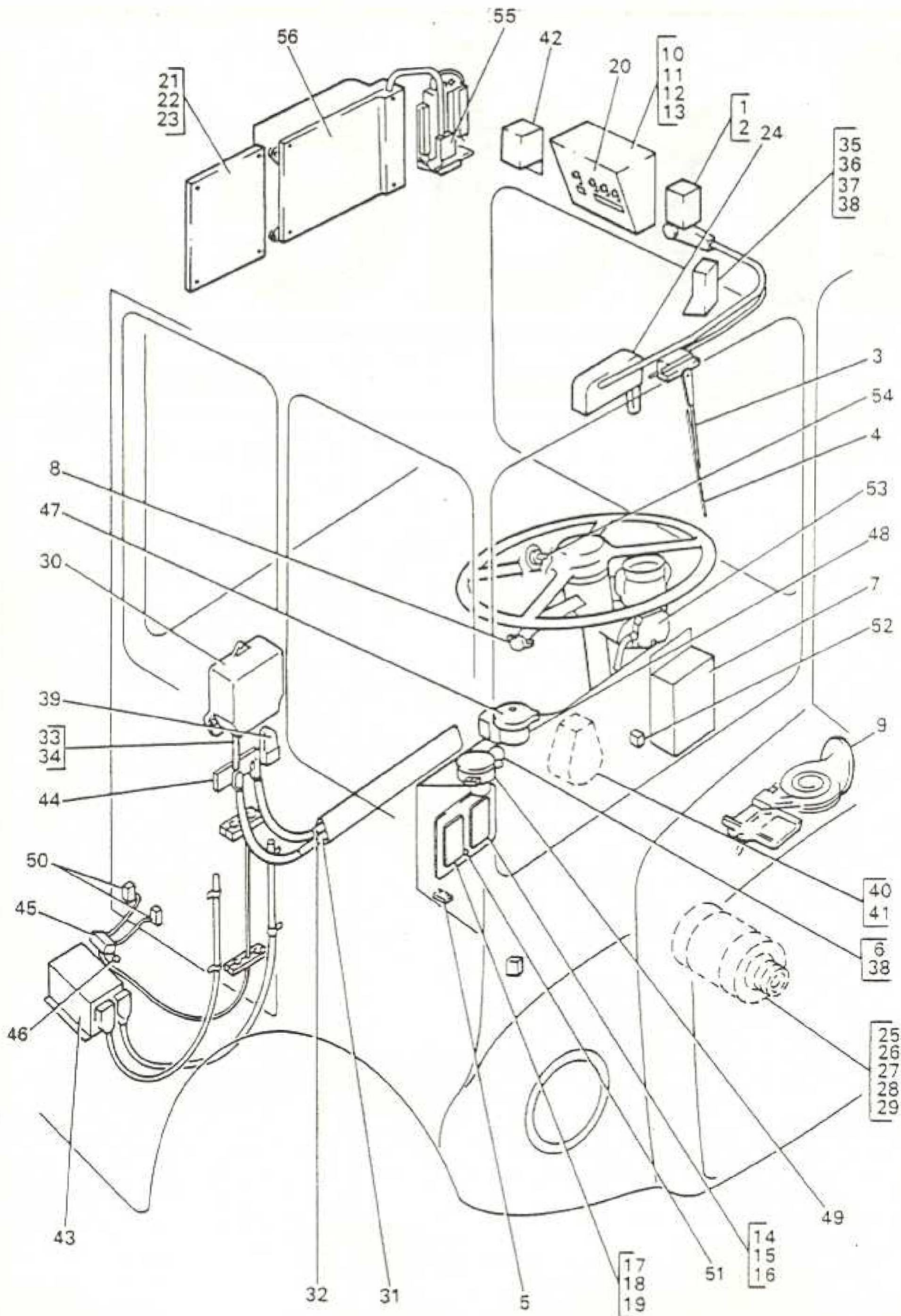
Index

DESCRIPTION

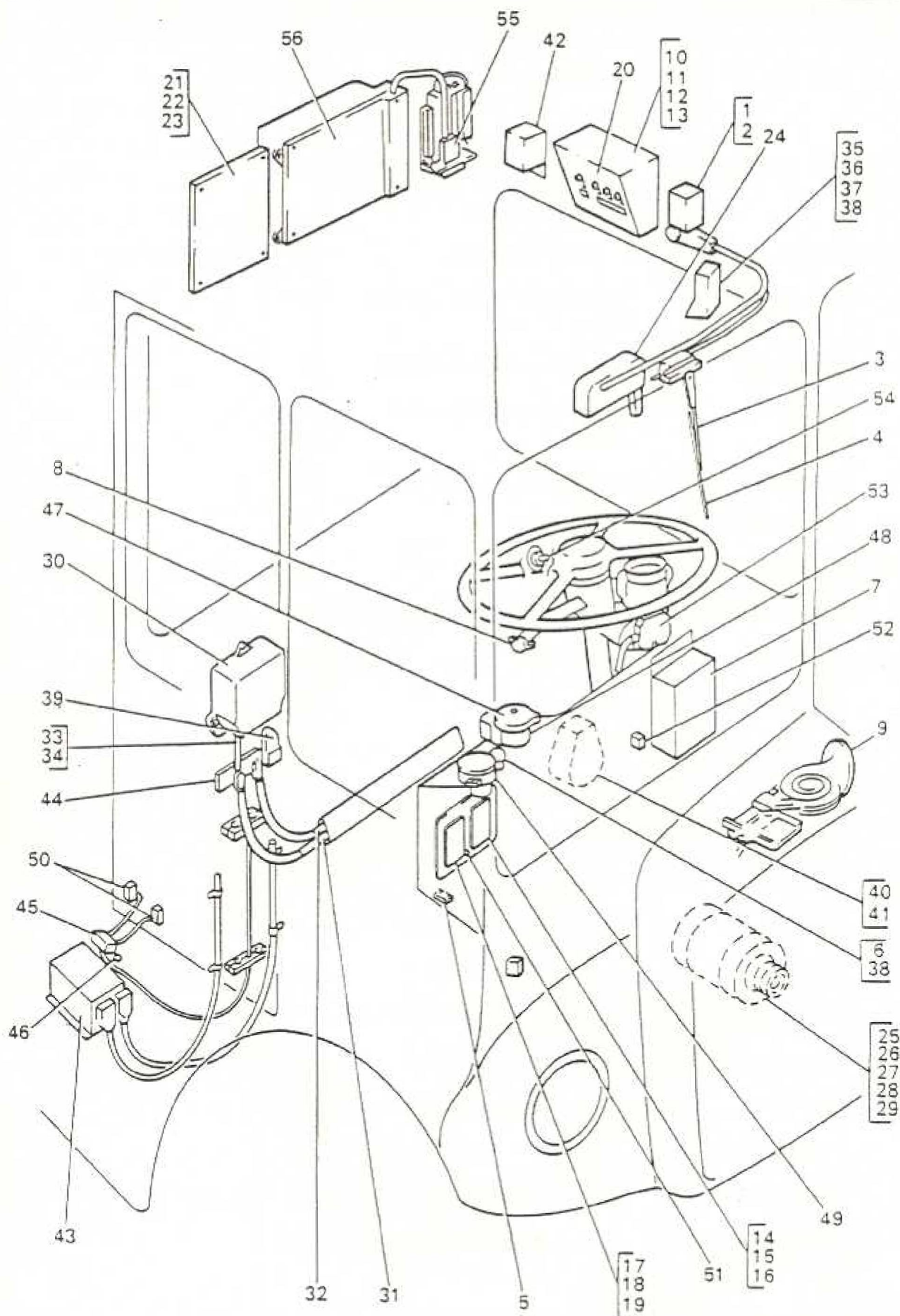
FRAME NO.

DRIVERS CAB

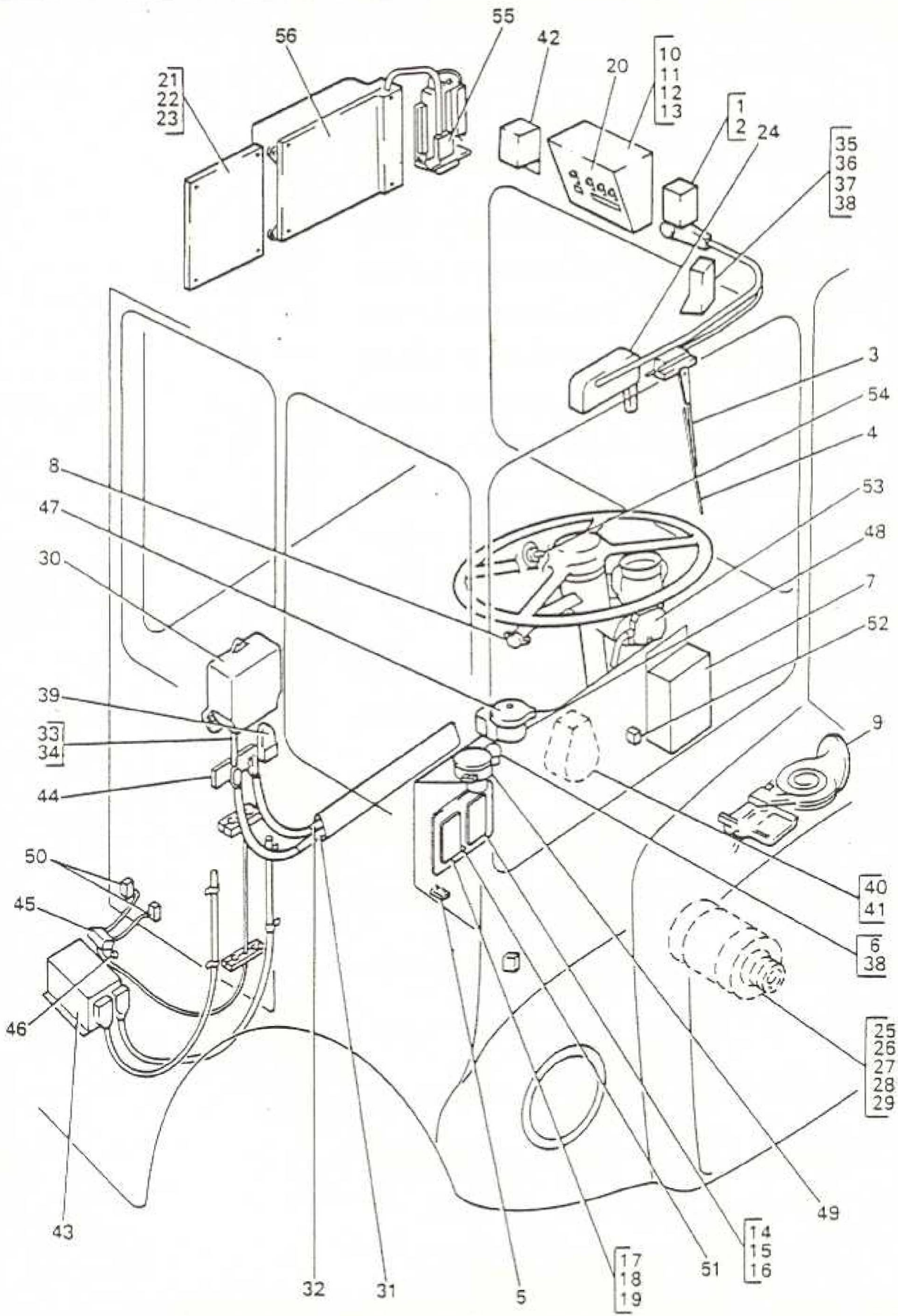
A2 to C10 (B901-D)



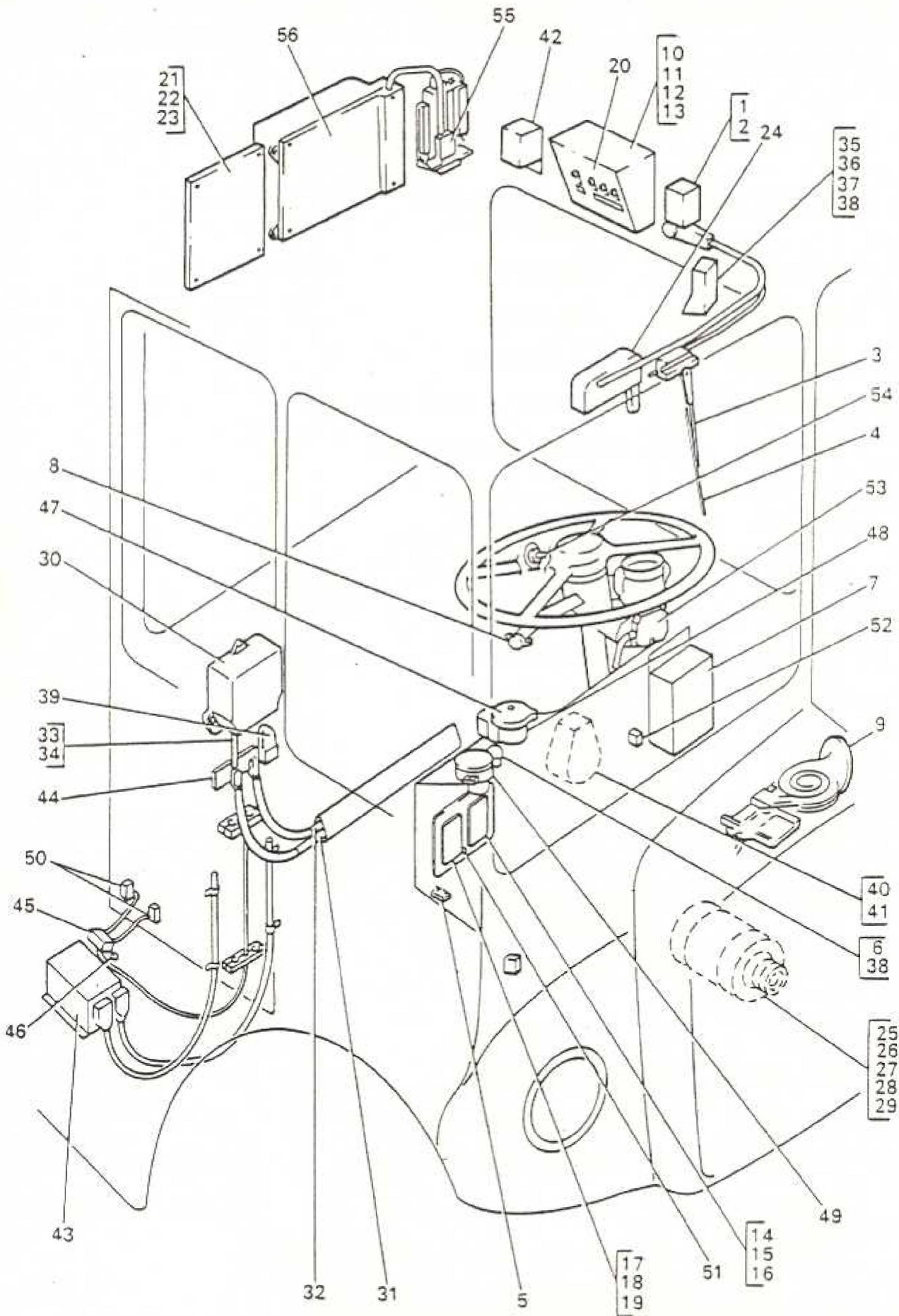
ITEM	MAN. REF.	PART NUMBER	A/D	ASSEMBLY - A	DETAIL - D	QTY.	REMARKS	ISSUE
				DESCRIPTION				
		RM 003 W		Installation of Electrical Equip		Ref		
1		RM 121 W1	A	Windscreen Wiper Motor & Wheelbox Comp		1		
2	LUC	743171	D	Brush Gear Set		1	After A/A EM 1004	
3		RM 089 W1	D	Windscreen Wiper Arm & Clip		1		
4		3049-1458	D	Windscreen Wiper Blade		1		
5		24621-148	A	Lampholder - Cleaners Socket		1		
6		24621-146	A	Lampholder - Speedo		1		
7		RM005T1/M	A	Cab Heater		1		
*	DRH	7224037	D	Motor		1		
*	CLD	CHSA 332-1A	D	Fan - A609206		1	After ADV W554	
8	LUC	76205	A	Horn Push		1		
9		RM 127 W1	A	Horn & Bracket		1		
10		RM 006 W1	A	Switch & Fuse Panel		1	Cab Heater	
11		533-64	D	Fuse Bridge Assy		4		
12		24443-582	D	Switch - Single Pole 15A		3		
13		24443-583	D	Starter Switch		1		
14		RM 007 W1	A	Switch & Fuse Panel		1	Facia Headlamp	
15		533-64	D	Fuse Bridge Assy		2		
16		24443-582	D	Switch - Single Pole 15A				
17		RM 008 W1	A	Switch & Fuse Panel		1	Facia Wiper	
18		533-64	D	Fuse Bridge Assy		3		
19		24443-582	D	Switch - Single Pole 15A		1		
20		RM 054 W1	A	Switch Cover Plate		1	Header Switchboard	
21		RM 009 W1	A	Bell & Buzzer Board		1		



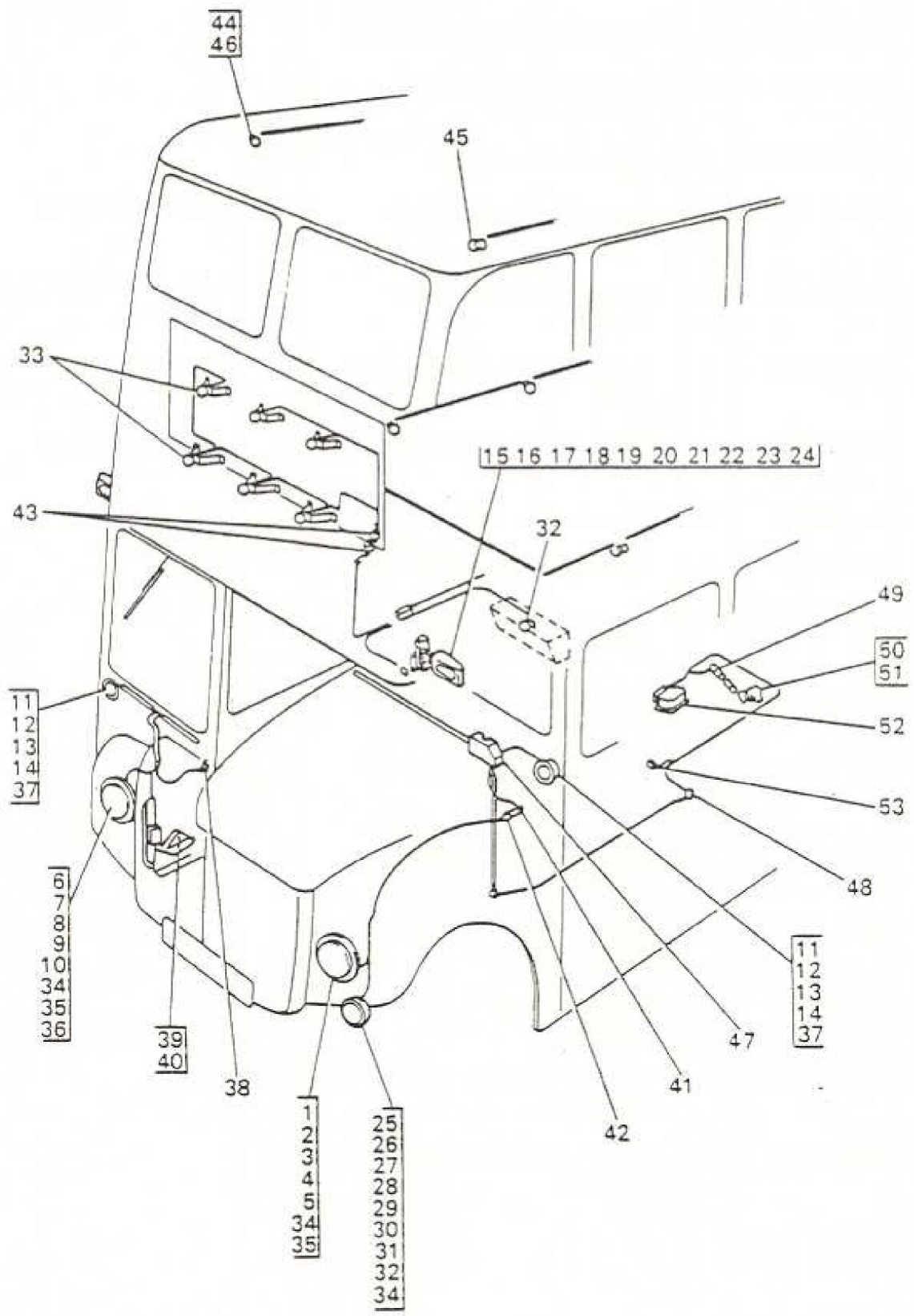
ITEM	MAN. REF.	PART NUMBER	ASSEMBLY - A		DETAIL - D		QTY.	REMARKS	ISSUE
			A/D	DESCRIPTION					
22		28162-231	D	Drivers Bell			1		
23		28162-262	D	Buzzer			1		
24	WBS	Y214-1	A	Brake & Gearbox Warning Indicator			1		
25		CA/DY 32	A	A.C. Generator & Pulley			1		
25		CA/DY 33	A	A.C. Generator & Pulley			1		
25		CA/DY 31	A	A.C. Generator & Pulley			1		
25		CA/DY 35	A	A.C. Generator & Pulley			1		
25		CA/DY 36	A	A.C. Generator & Pulley			1	Alt	
25		CA/DY 37	A	A.C. Generator & Pulley			1		
25		CA/DY 39	A	A.C. Generator & Pulley			1		
25		CA/DY 39A	A	A.C. Generator & Pulley			1		
25		CA/DY 53	A	A.C. Generator & Pulley			1		
26	SIM	43160	D	Brush			2		
27	CAV	6067-49	D	Brush Set (2 Brushes)			1	CA/DY 31	
28	CAV	6067-69-ABSU1546	D + L	Brush Set (2 Brushes)			1	CA/DY 35, 36, 37; 39 & 39A	
29	CAV	6220-275C	D	Brush Set (2 Brushes)			1	CA/DY 53	
30	CAV	202-34	A	A.C. Generator Control Panel			1		
30	SIM	ET 10/2	A	A.C. Generator Control Panel			1		
30		CP 6A	A	A.C. Generator Control Panel			1	Alt	
30		CP 7A	A	A.C. Generator Control Panel			1		
30		CP 13	A	A.C. Generator Control Panel			1		
31		RM 022 W1	A	Cable Assy Starter +ve			1		
32		RM 023 W1	A	Cable Assy Starter -ve			1		
33		RM 024 W1	A	Cable Assy Control Panel to 2 Pin Block +ve			1		



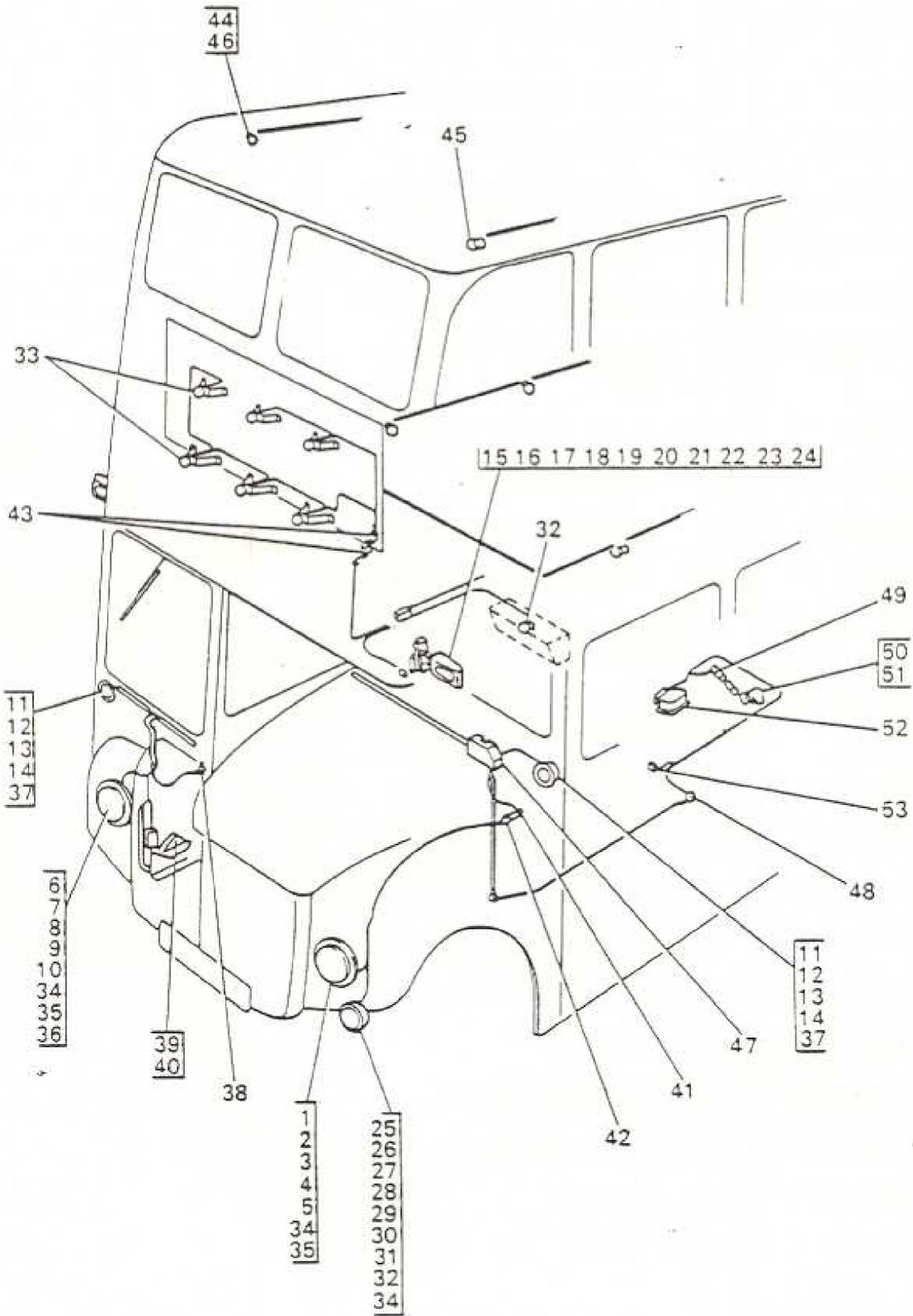
ITEM	MAN. REF.	PART NUMBER	ASSEMBLY - A		QTY.	REMARKS	ISSUE
			A/D	DETAIL - D			
			DESCRIPTION				
34		RM 025 W1	A	Cable Assy Control Panel to 2 Pin Block -ve	1		
*		RM 034 W1	A	Cable Assy A.C. Generator to Rectifier	1		
*		RM 082 W1	A	Cable Assy Rectifier to Control Panel	1		
35		RM 064 W1	A	Cab Lamp	1	Alt After	
35		RM 151 W1	A	Cab Lamp	1	ADV SW 1009	
36		24621-158	D	Lampholder	1		
37		MB 099 W1	D	Switch & Plate Assy	1		
38		24615-147	D	Bulb 24V 12W BC 38mm	2		
39		RM 078 W1	A	Switch Unit, Hyd Accumulators	1		
40		SM 11	A	Starter Motor	1		
40		SM 14	A	Starter Motor	1		
40		SM 14B	A	Starter Motor	1	Alt	
40		SM 15	A	Starter Motor	1		
40		SM 14A	A	Starter Motor	1		
40		SM 16	A	Starter Motor	1		
41	CAV ABU 1550	6068-33	D	Brush Set (8 Brushes)	1	SM 11, 14, 14A & 14B	
42	CAV	CRFA 24/8	A	Interrupter Unit - Direction	1	Alt	
42	CAV	CRF 24/8	A	Interrupter Unit - Direction	1		
43	CAV	RUG 3	A	A.C. Rectifier	1	RM 5/4 & 5/5	
43		RM 113 W1	A	A.C. Rectifier	1	RM 5/8, 5/9 & 5/7	
43	SIM	ER 10/1	A	A.C. Rectifier	1	RM 5/6, 5/7, 5/10	
44		RM 066 W1	A	Terminal Block - 2 Pin	1	Battery Mains - Cab	
45		24151-223	A	Terminal Block - 4 Way	1	Not RM 5/4 & 5/10	
46		24151-521	D	Terminal Strip - 1 Way	2		



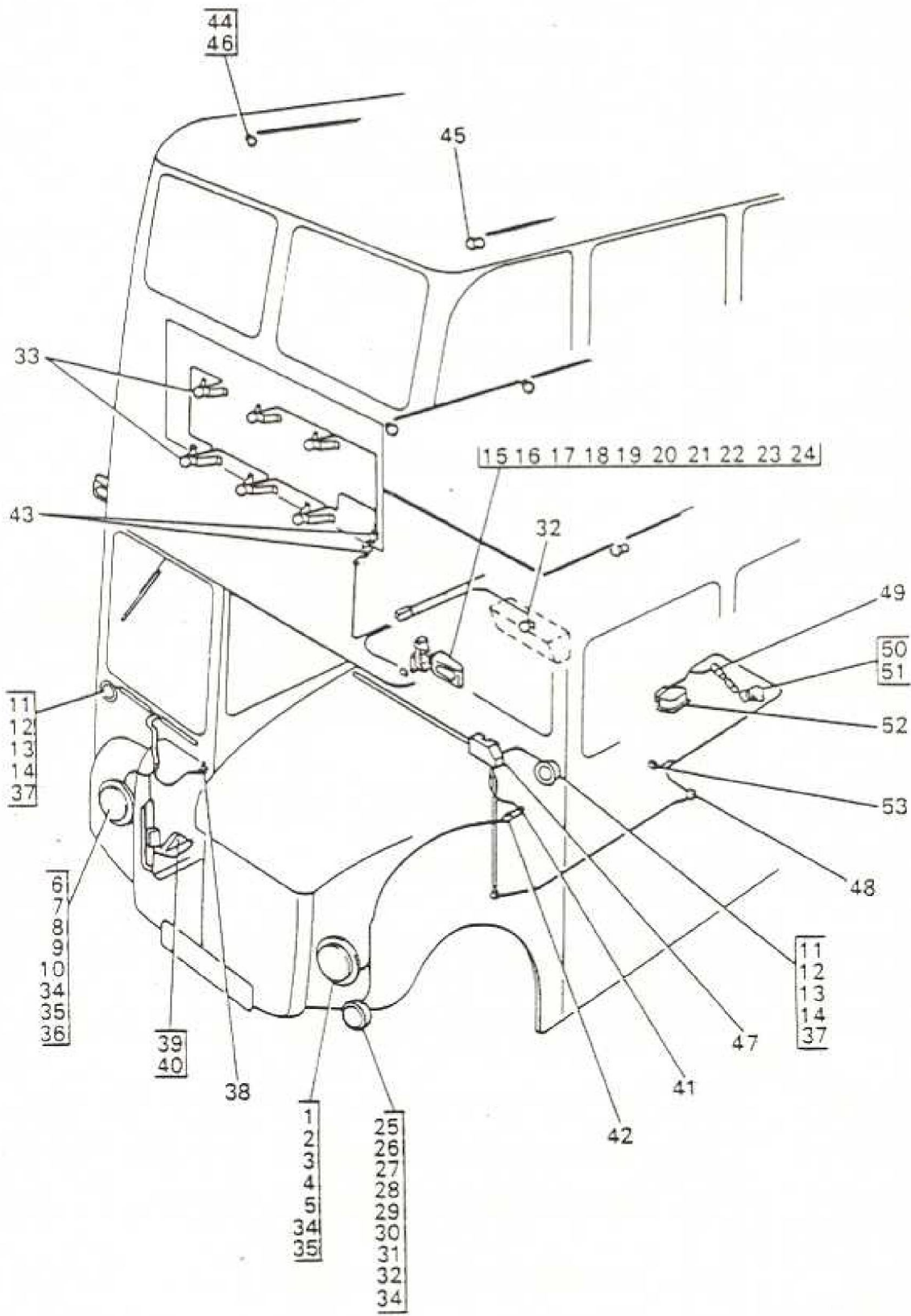
ITEM	MAN. REF.	PART NUMBER	A/D	ASSEMBLY - A	DETAIL - D	QTY.	REMARKS	ISSUE
				DESCRIPTION				
47	CAV	3049/1852 *	A	Direction Indicator Switch		1		
48	TIN	80/10/0998 ACU 2338	D	Direction Indicator Warning Light		1		
49	SMH	SIE/2210/00 *	A	Speedometer Head		1		
50		3065G-1710	A	Hydraulic Brake Micro Switch		2	RM 5/9 & 5/10	
50		3065G-1733	A	Hydraulic Brake Micro Switch		2	Not RM 5/9 & 5/10	
51		RM 154 W1	A	Switch Cover Plate - Cab Facia		1	Alarm	
*		24463-254	D	Accelerator & Stop Light Switch		2	After MOD 448	
52		24463-255	D	Mini-Switch Plain Lever		1	Cab Heater	
53		3049-1736	A	Gear Selector Switch Assy		1		
*		3049-1735	A	Terminal Body, Cover & Cable Sleeve		1		
54	AEC	5121-22 *	A	Isolating Switch - Engine Stop Control		1		
55	PLE	2CZ 110453 *	A	30 Way Plug, Socket & Terminal Board		1		
56	SCG	6969 *	A	Control Panel - Auto Gearbox		1		
56	SCG	8546 *	A	Control Panel - Auto Gearbox		1		
56	CAV	300A-3 *	A	Control Panel - Auto Gearbox		1	Alt	
56		3049-1722	A	Control Panel - Auto Gearbox		1		
56		3049-2262	A	Control Panel - Auto Gearbox		1		



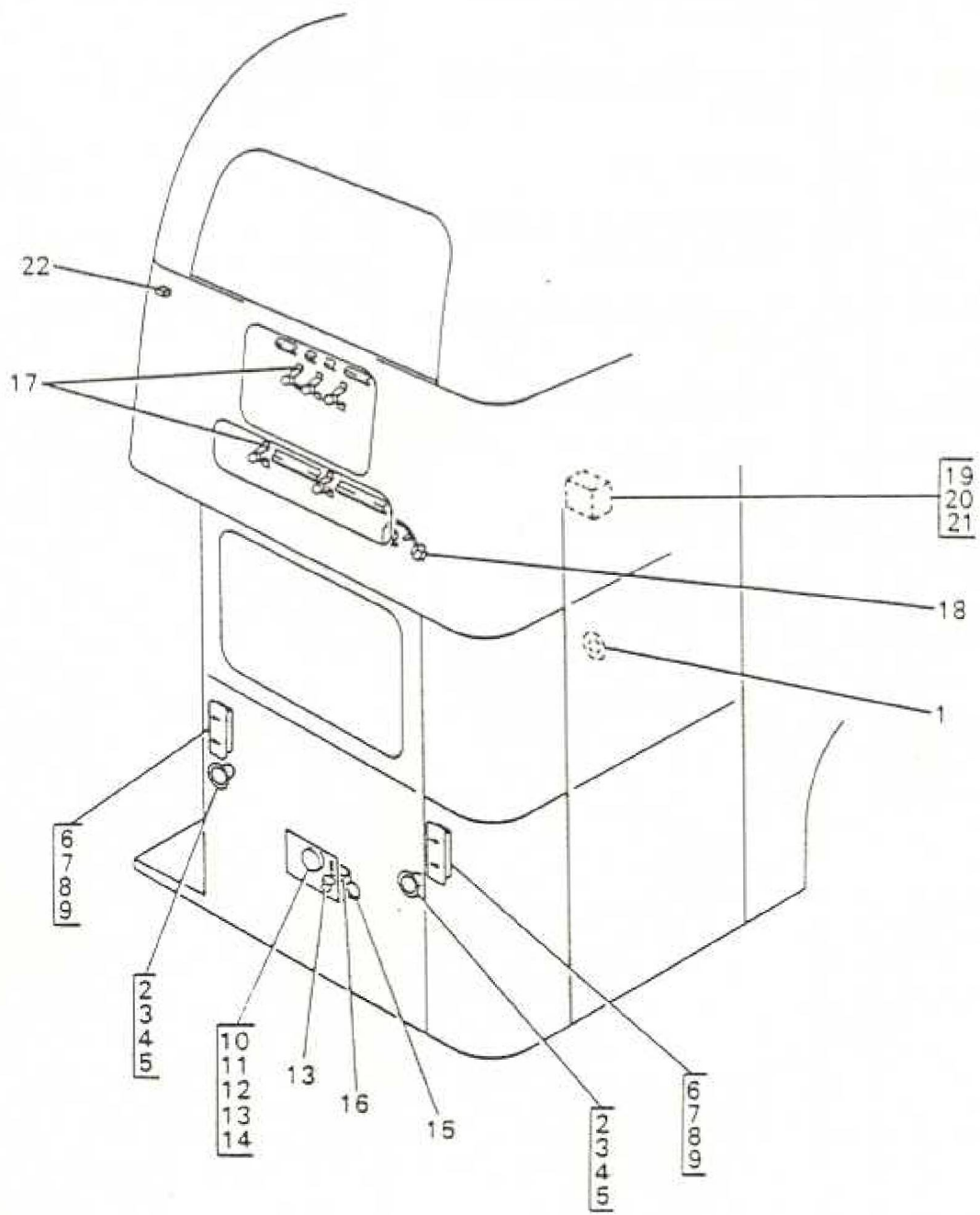
ITEM	MAN. REF.	PART NUMBER	A/D	ASSEMBLY - A	DETAIL - D	QTY.	REMARKS	ISSUE
				DESCRIPTION				
1		RM 077 W1/A	A		Headlamp N/S (Red Finish)	1		
1		RM 077 W1	A		Headlamp N/S (Chrome Finish)	1	Alt	
2	LUC	555991 *	D		Light Unit 47H5120	1		
3	LUC	54520804 †	D		Rubber Gasket	1		
4	LUC	554459 †	D		Dust Excluder - Rubber	1		
5	LUC	860824 †	D		Bulbholder & Cable Assy	1		
6		RM 056 W1/A	A		Headlamp 0/S (Red Finish)	1		
6		RM 056 W1	A		Headlamp 0/S (Chrome Finish)	1	Alt	
7	LUC	555991 †	D		Light Unit 47H5120	1		
8	LUC	553561 *	D		Rubber Gasket	1		
9	LUC	554459 †	D		Dust Excluder - Rubber	1		
10	LUC	860824 †	D		Bulbholder & Cable Assy	1		
11		RM 058 W1/A	A		Side Lamp N/S & 0/S (Red Finish)	2	Not RM 6 & 10 Alt	
11		RM 058 W1	A		Side Lamp N/S & 0/S (Chrome Finish)	2	RM 6 & 10 only	
12	LUC	54584256	D		Lens 'E' Marked 7803323	1		
13	LUC	573175 +	A		Gasket - Lens Seat	1		
14		24621-150	D		Lampholder	1		
15		RM 062 W1/A	A		Side Flasher Lamp	2	Not RM 6 & 10	
15		RM 062 W1/H	A		Side Flasher Lamp	2	RM 6 & 10 only	
16		3049-1719	A		Lens Unit	1		
17	CAV	5977-37 †	D		Rubber Body	1		
18	CAV	5997-38 †	D		Division Plate	1		
19	CAV	5997-32 †	D		Liner	1		
20	LUC	575153 †	D		Lens	2		



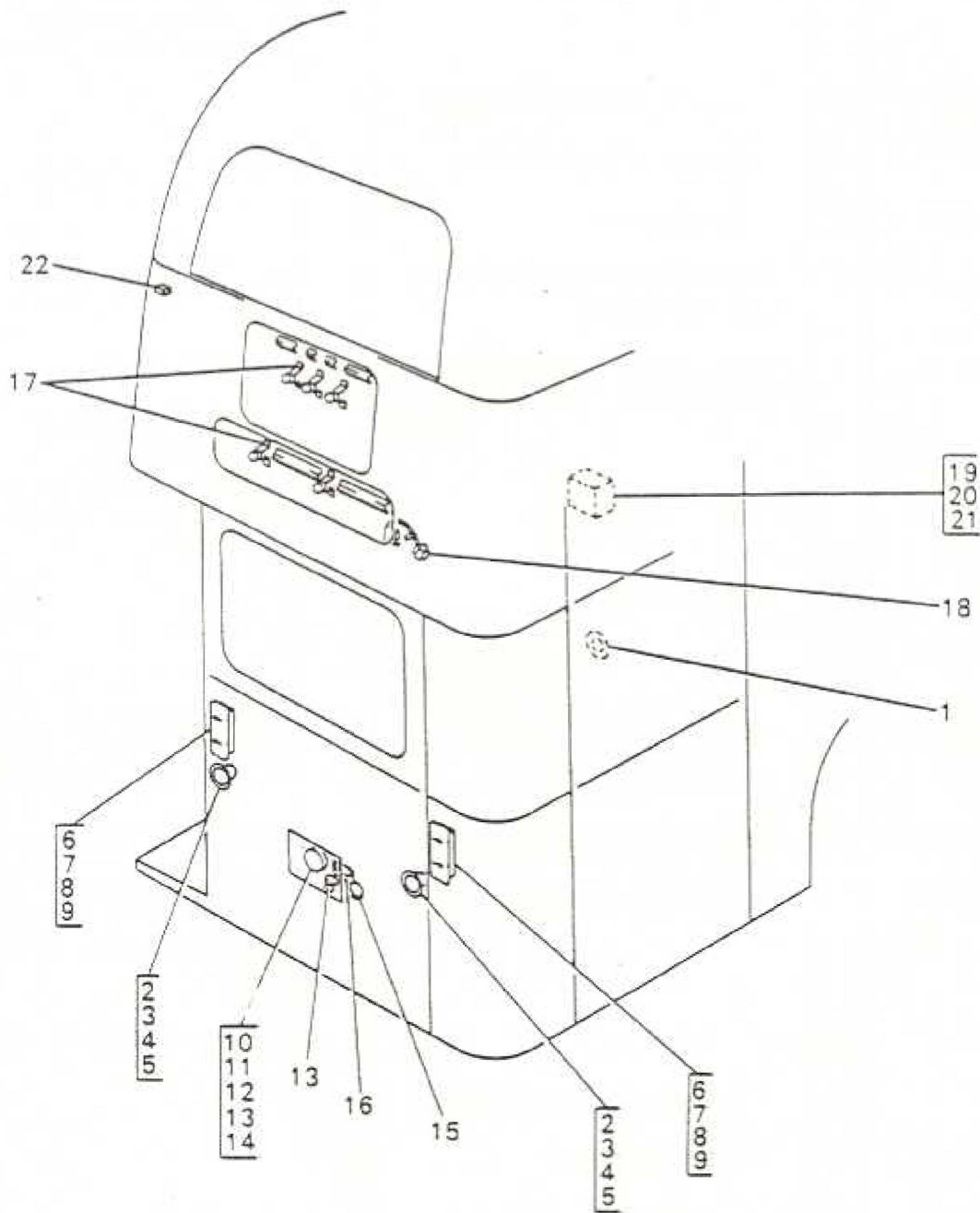
ITEM	MAN. REF.	PART NUMBER	A/D	ASSEMBLY - A	DETAIL - D	QTY.	REMARKS	ISSUE
				DESCRIPTION				
21	CAV	5335-627 <i>✱</i>	D		Bolt	1		
22		21683-002	D		Nut Hex 1/4 in UNF	1		
23		21137-565	D		Washer 1/4 in Shakeproof	1		
24		3049-1741	D		Reinforcing Band	1		
25		RM 068 W1	A		Fog Lamp (Black & Chrome Rim)	1	After ADV VL 1004	
26	LUC	554839 <i>✱</i>	D		Light Unit	1		
27	LUC	504665 <i>✱</i>	D		Light Unit Fixing Wire	5		
28	LUC	169321 <i>✱</i>	D		Barrel Nut - Rim Fixing	1		
29	LUC	552255 <i>✱</i>	D		Screw - Rim Fixing	1		
30	LUC	534263 <i>↓</i>	D		Front Rim - Chrome	1		
31		21137-578	D		Washer Shakeproof - Stem	1		
32			D		Front Rim - Black	1	Overpaint LUC 534263 After ADV VL 1004	
33		24615-147	D		Bulb 24V 12W BC 38mm Destination Route No. & Cab Lamp	16		
34		24615-169	D		Bulb 24V 44W BPF 28mm Head & Fog Lamp	3	Not RM 7, 9, 9/1 9/2 & 10	
35		24615-171	D		Bulb 24V 50/50W UEC Headlamp	4	RM 6 & 10 only	
36		24615-176	D		Bulb 24V 44/54W BPF 28mm O/S Headlamp	1	RM 7, 9, 9/1 & 9/2 only	
37		24615-203	D		Bulb 24V 6W BC 38mm Side, Rear & Tail Lamps	5		
38	LUC	31750 <i>✱</i>	D		Headlamp Dipper Switch	1	After MOD 301	
39	SCG	8822 <i>✱</i>	A		Accelerator Switch & Cable	1	RM 7/1, 7/2 & 7/3	
39	SCG	6769 <i>✱</i>	A		Accelerator Switch & Cable	1	RM 5/2, 5/5, 9, 9/1 & 9/2	
39	SCG	6966	A		Accelerator Switch & Cable	1	RM 5/7, 5/8, 6 & 7	
40		3049-1751 3049-1751	D		<i>Cable</i> Cable Assy	1		



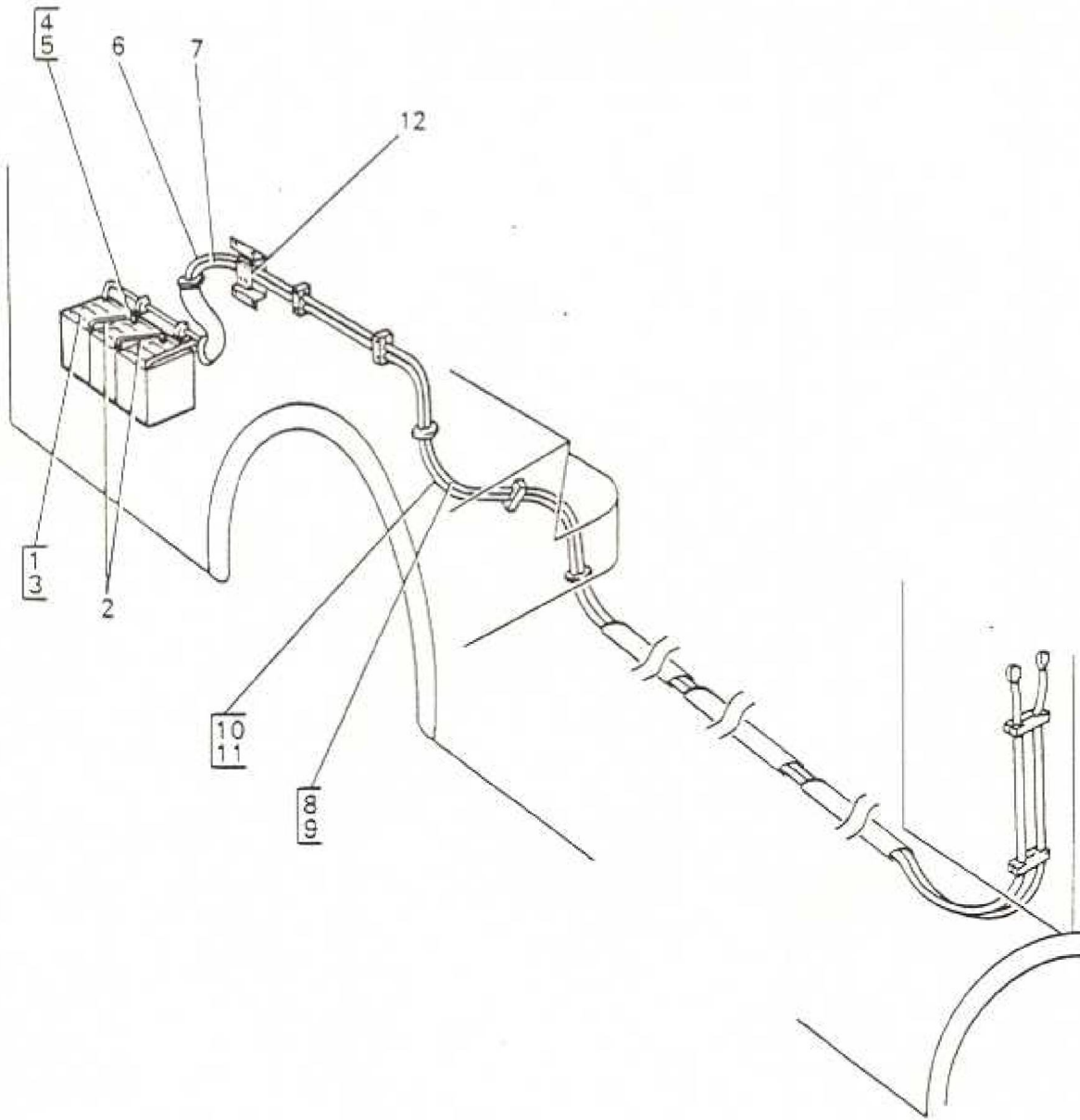
ITEM	MAN. REF.	PART NUMBER	A/D	ASSEMBLY - A	DETAIL - D	QTY.	REMARKS	ISSUE
				DESCRIPTION				
41	ERM	17081 *	D	Male Connector		4	After A/A VW 1013	
42	ERM	17071 *	D	Female Connector		4		
43		RGC 3050-744	D	Cable Saddle - 1 Way		2		
44		RM 010 W1	A	Lamp Fitting Assy		A/R		
45		RM 003 W2	D	Lamp Cowl - Front N/S L/S		1	Not RM 6 & 10	
46		24615-155	D	Bulb 24V 22W BC 50mm		A/R	Not RM 6 & 10	
			D	Saloon & Platform				
46		24615-158	D	Lamp Bulb 24V 22W OBC 50mm		A/R	After MOD 73 Not RM 6	
47		RM 004 W1	A	Junction Box		1		
48		24151-522	D	Terminal Strip - 2 Way Speedo Conduit		1		
49		RM 146 W1	A	Transmitter, Shroud and Leads		1	After A/A DY 1012	
50	AEC	DK 1401 *	A	A.C. Signal Generator		1		
51	AEC	5985-13A *	A	Plug Body		1	After A/A EZ 1027	
52		3062D-476	A	E.P. Valve Unit		1		
53	APC	97319A *		Air Pressure Warning Micro Switch		1		



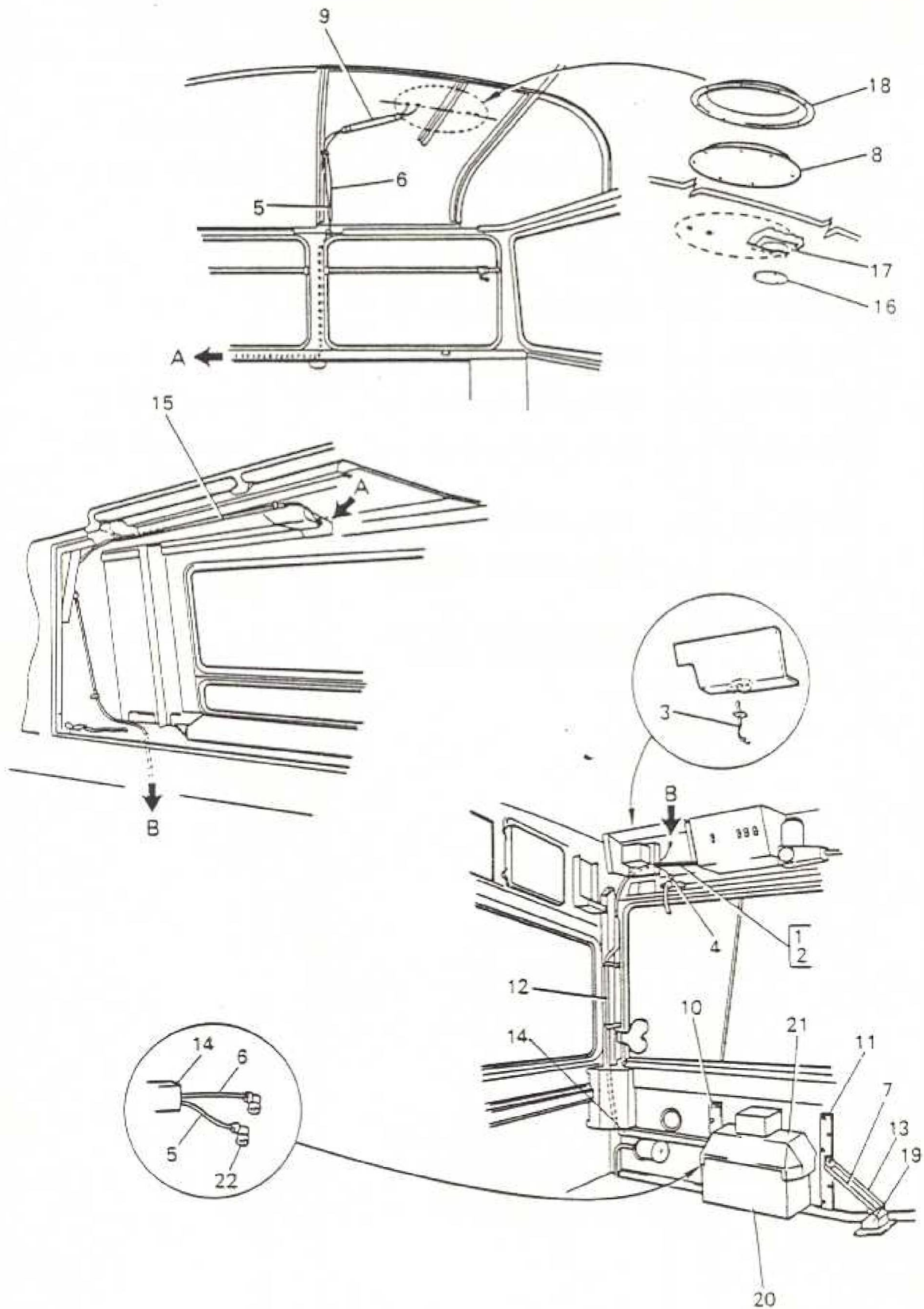
ITEM	MAN. REF.	PART NUMBER	A/D	ASSEMBLY - A	DETAIL - D	QTY.	REMARKS	ISSUE
				DESCRIPTION				
1	GEC	L 7176 <i>R</i>	A		Bell Push - White	2		
2		RM 059 W1/A	A		Tail Lamp N/S & O/S Red Finish	2	Not RM 6 & 10	
2		RM 059 W1	A		Tail Lamp N/S & O/S Chrome Finish	2	RM 6 & 10 only	
							(Alt in pairs after ADV VL 1004 - Must be used in pairs of Red or Chrome Finish)	
3	LUC	54570797 <i>R</i>	D		Lens - Red C/W Reflex	1		
4	LUC	573175 <i>R</i>	D		Gasket - Lens Seating	1		
5		24621-150	D		Lampholder	1		
6		RM 061 W1/A	A		Rear Arrow Flasher N/S & O/S Red Finish	2	Not RM 6 & 10	
6		RM 061 W1	A		Rear Arrow Flasher N/S & O/S Chrome Finish	2	RM 6 & 10 only	
							(Alt after ADV VL 1004 - Must be used in pairs of Red or Chrome Finish)	
7	LUC	577138 <i>R</i>	D		Lens & Arrow	1		
8	LUC	577134 <i>R</i>	D		Rubber - Lens Seating	1		
9		24615-108	D		Bulb, 12V, 21W, SBC 25mm Side & Rear Direction Indicators	4	After MOD 379	
10		RM 060 W1/A	A		Stop Lamp, Red Finish	1	Not RM 6 & 10	
10		RM 060 W1	A		Stop Lamp, Chrome Finish	1	RM 6 & 10 only	
							(Alt after ADV VL 1004)	
11	LUC	577421 <i>R</i>	D		Lens	1	After Alt ADV VL 1003	
12	LUC	573175 <i>R</i>	D		Gasket - Lens Seating	1		
13		24621-150	D		Lampholder	1		
14		24615-162	D		Bulb, 24V, 34W BC 38mm	1		



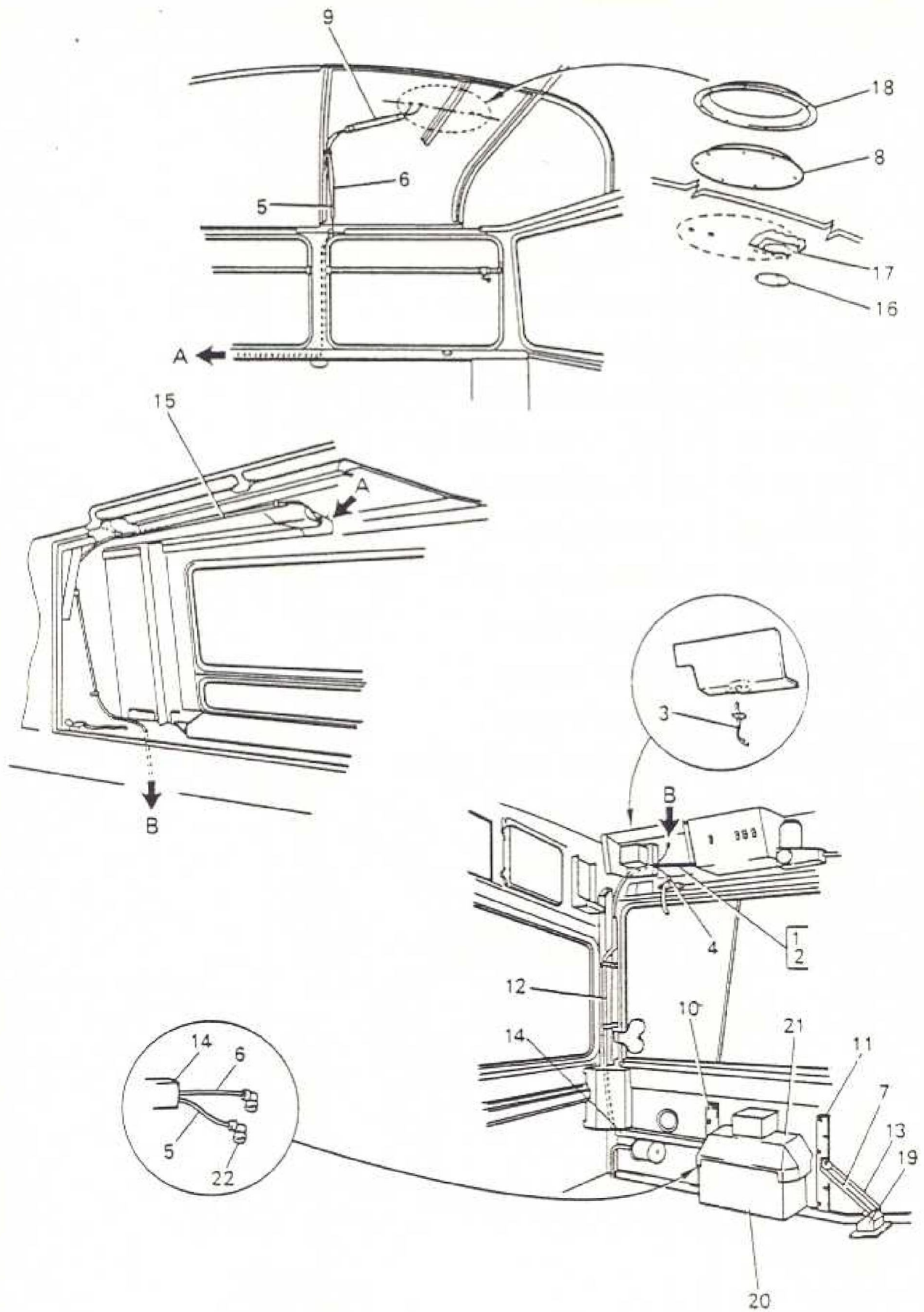
ITEM	MAN. REF.	PART NUMBER	A/D	ASSEMBLY - A	DETAIL - D	QTY.	REMARKS	ISSUE
				DESCRIPTION				
15		RM 048 W1	A	Inspection Socket Conductors Platform		1		
16		24151-223	D	Terminal Socket - 4 Way		1	RM 6 only	
17		24621-149	A	Lampholder, Destination Boxes		14		
18		24151-221	A	Terminal Block - 2 Way Front and Rear Destination Boxes		4	Not RM 6	
19		RM 097 W1	A	Saloon Lighting Switch- board Conductors Platform		1	After ADV W 579	
20		533-64	A	Fuse Bridge		5		
21		24443-582	D	Switch - Single Pole 15 amp		2		
22		RM 067 W1	A	Terminal Block - 4 Way linked N/S U/S Rear		1	Not RM 6	



ITEM	MAN. REF.	PART NUMBER	A/D	ASSEMBLY * A	DETAIL * D	QTY.	REMARKS	ISSUE
				DESCRIPTION				
1		AT 10	D	Battery, 8V Unit		3	Alterations	
2		AT 255 W1	D	Battery Series Loop		2	Required for	
3		RM 013 W1	A	Cable Assy		2	MOD 27 Part 2	
4		21485-702	D	Nut		12		
5		21485-703	D	Bolt		12		
6		RM 074 W1	A	Cable, Battery +ve		1		
7		RM 075 W1	A	Cable, Battery -ve		1		
8		RM 020 W1	A	Cable, Battery Main +ve		1	Before MOD 220	
9		ER 502 W1	A	Cable, Battery Main +ve		1	After MOD 220 RML only	
10		RM 021 W1	A	Cable, Battery Main -ve		1	Before MOD 220	
11		ER 503 W1	A	Cable, Battery Main -ve		1	After MOD 220 RML only	
12		RM 011 W1	A	Terminal Block - 6 Pin Battery Mains - Rear		1		



ITEM	MAN. REF.	PART NUMBER	A/D	ASSEMBLY - A	DETAIL - D	QTY.	REMARKS	ISSUE
				DESCRIPTION				
1		RM 160 W1	A	Power Supply Cable (+ve)		1		
2		RM 161 W1	A	Power Supply Cable (-ve)		1		
3	RDO	10/610 *	A	Boom Microphone		1	Alt	
3		RM 186 W1	A	Boom Microphone		1		
4		RM 162 W1	A	Microphone Cable		1		
5		RM 158 W1	A	Aerial Feeder Cable		1	Receive	
6		RM 159 W1	A	Aerial Feeder Cable		1	Transmit	
7		RM 163 W1	A	Foot Switch Cable		1		
8		DM 605 W1	A	Low Profile Aerial (VHF)		1		
9		RM 155 W2	D	Anti-Rattle Foam		1		
10		RM 249 D1	A	Mounting Bar LH		1		
11		RM 250 D1	A	Mounting Bar RH		1		
12		RM 251 D1	A	Vertical Conduit		1		
13		RM 252 D1	A	Cable Trunking		1		
14		RM 253 D1	A	Cable Trunking		1		
15		RM 001 EU42	D	Conduit - Aerial Feeders		1		
16		RM 001 H48	D	Patch Plate		1		
17		RM 001 H49	D	Tapping Plate		1		
18	ANT	MB 1009 00	D	Aerial Cover		1		
19	LUC	76427	D	Foot Switch <i>M80 1988</i>		1		



E4

2-WAY RADIO
ELECTRICS

ITEM	MAN. REF.	PART NUMBER	ASSEMBLY - A		DETAIL - D		QTY.	REMARKS	ISSUE
			A/D	DESCRIPTION					
20			A	2-Way Radio			-	As Required at Garage	
21		RM 157 W1	A	Transmitter Cover			1	Storno	
21		RM 259 D1	A	Transmitter Cover			1	Redifon	
22	GPE	GE 35002 C10	A	BNC Elbow Plug			2		
*	AMP	151680-6	D	Mate-N-Lock Socket Housing <i>ACU 2011</i>			1	Blue	
*	AMP	163557-4	D	Contact Socket			2		
*		24413-147	D	Fuse Quick Blow 3 amp			2		
*		BP 50081	D	Self Adhesive Label			1	Radio Identification	