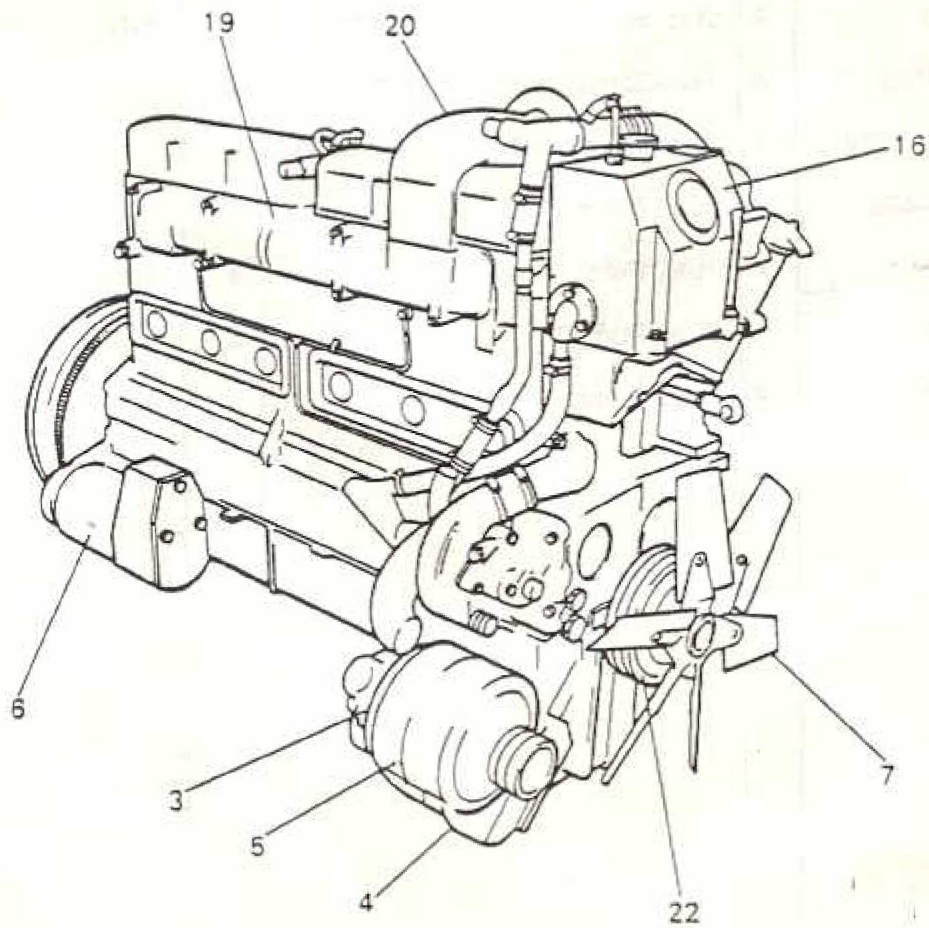
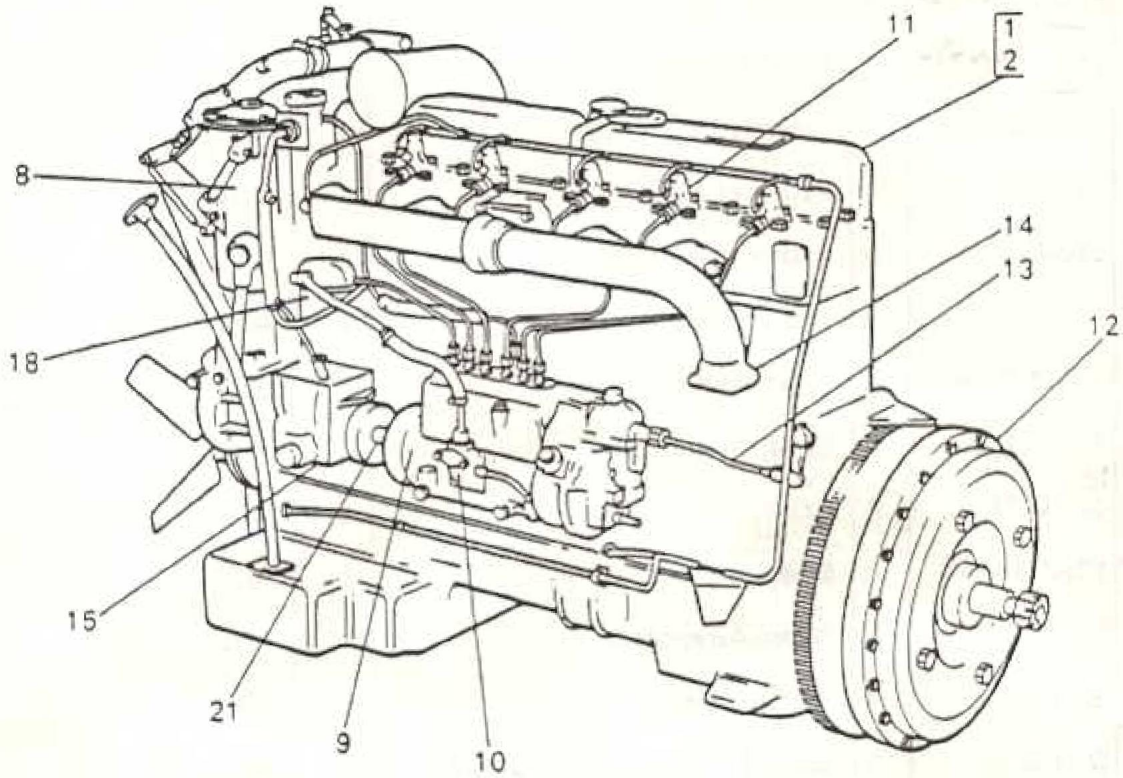
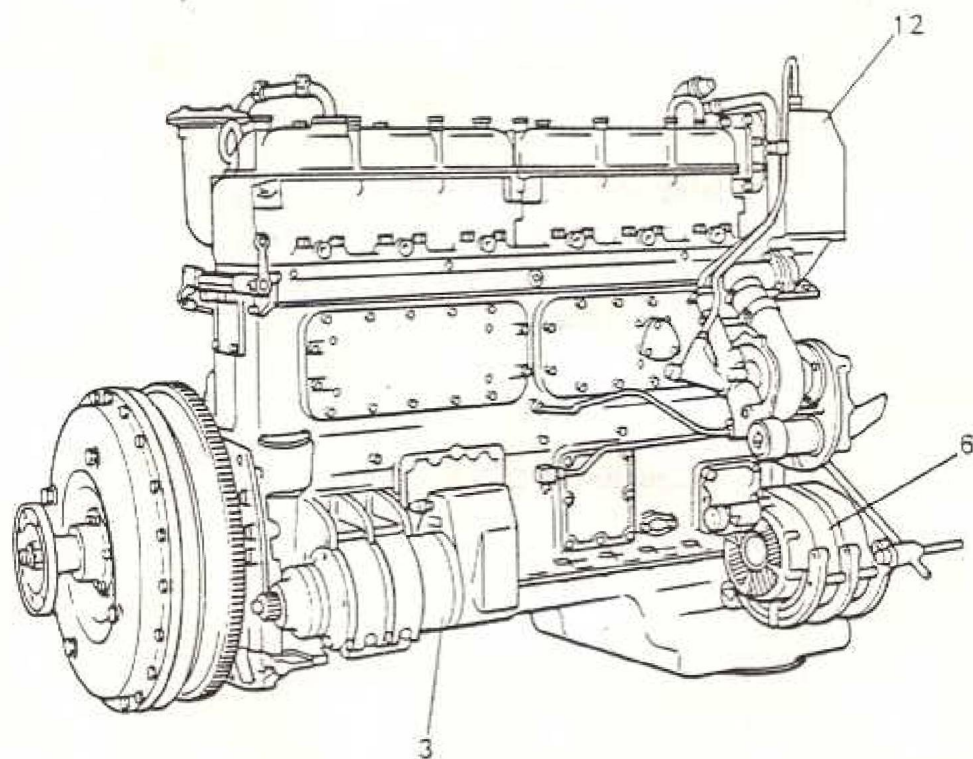
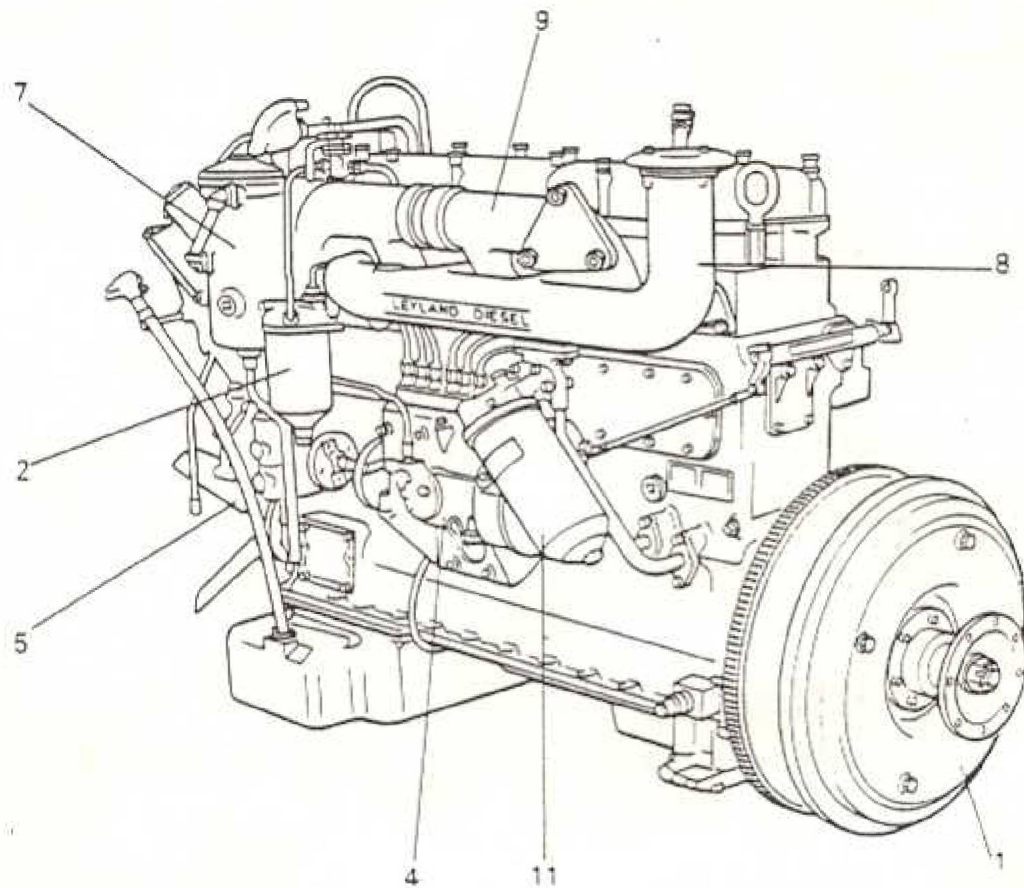


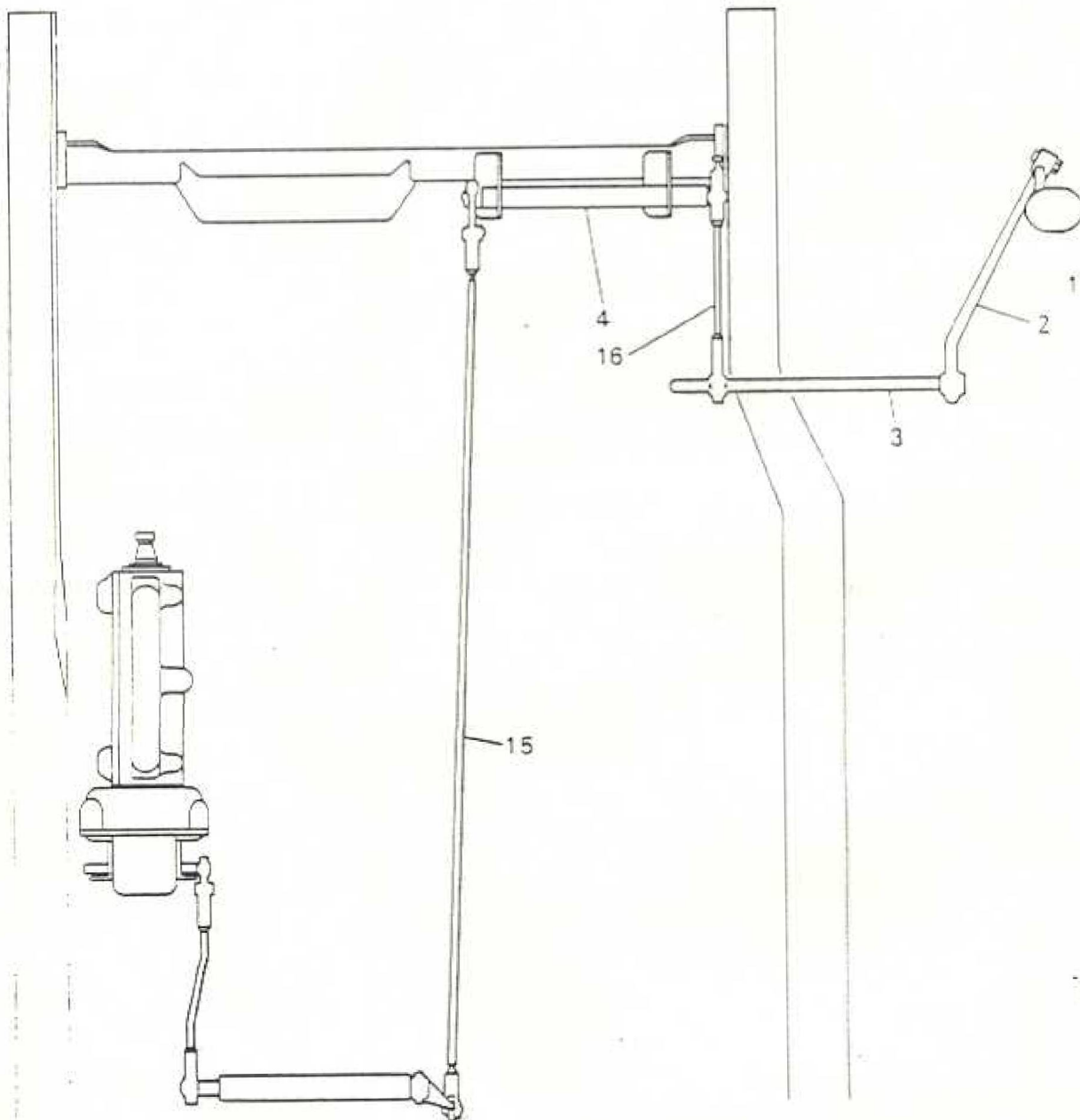
ITEM	MAN. REF.	PART NUMBER	A/D	ASSEMBLY - A	DETAIL - D	QTY.	REMARKS	ISSUE
				DESCRIPTION				
1		EN45 <i>AV590</i>	A	Engine unit		1	Alt.	
2		EN62 <i>AV590</i>	A	Engine unit		1	Alt.	
3	CAV	AC724/4 <i>+</i>	A	Alternator C.A.V.		1	Alt.	
3	AEC	530-567 <i>+</i>	A	Alternator C.A.V.		1	Alt.	
3	AEC	530-824 <i>+</i>	A	Alternator		1	Alt.	
3	AEC	530-813 <i>+</i>	A	Alternator		1	Alt.	
3	AEC	530-737 <i>+</i>	A	Alternator C.A.V.		1	Alt.	
4		3060A1253	A	Cradle-Alternator		1	Alt.	
4		3060A1236	A	Cradle-Generator		1	Alt.	
5	AEC	V1/0198 <i>+</i>	A	Strap-Alternator		2	Alt.	
5	AEC	V1/0166 <i>+</i>	A	Strap-Alternator		1	Alt.	
6		SM11	A	Starter Motor		1	Alt.	
6		SM14B	A	Starter Motor, 6 in. C.A.V.		1	Alt.	
6		SM15	A	Starter Motor, 6 in. Simms		1	Alt.	
7	AEC	A1/0826 <i>+</i>	A	Fan-Comp. with Driving Centre		1		
*		3060A1284	A	Fan-Comp. with Driving Centre		1		
8		3087-406	A	Fuel Filter		1		
9		FP72	A	Fuel Pump		1	Alt.	
9		FP73	A	Fuel Pump		1	Alt.	
9		FP77	A	Fuel Pump		1	Alt.	

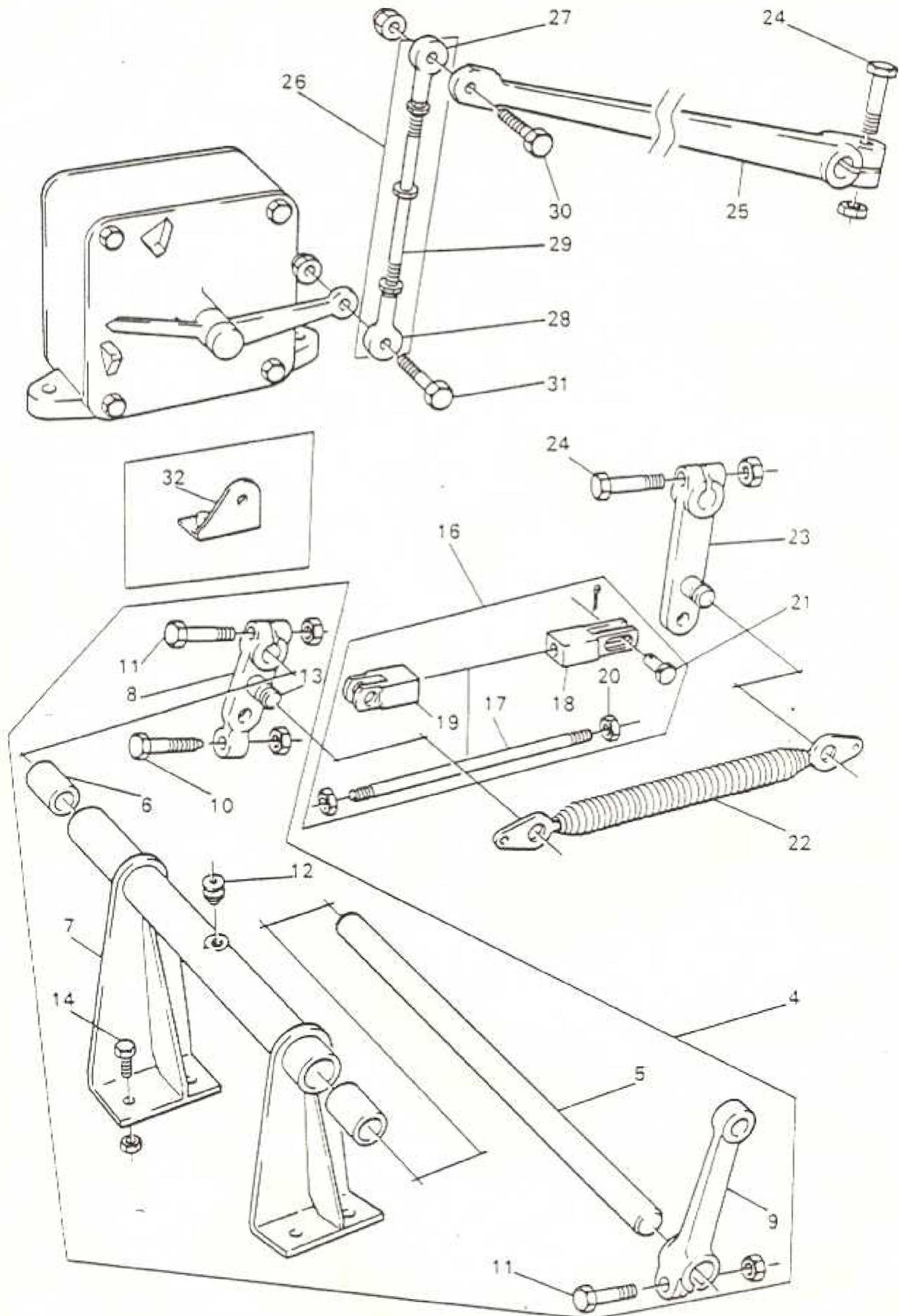


ITEM	MAN. REF.	PART NUMBER	A/D	ASSEMBLY * A	DETAIL * D	QTY.	REMARKS	ISSUE
				DESCRIPTION				
10	AEC	78-1029 ³	A	Lift Pump		1		
*		3087-313	A	Injector		6	Alt.	
*		562-146	A	Injector		6	Alt.	
11	AEC	562-282 ⁷	A	Injector		6	Alt.	
				<u>Note</u> For details of Fuel pipework on Engine Refer to Fuel System - Front End.				
12		FF13	A	Fluid Flywheel		1	See M902 (C2)	
13		3074R-120	A	Control Rod		1	Alt.	
13		R4/1396	A	Control Rod		1	Alt.	
14	AEC	AA7625 ⁴	A	Exhaust Manifold Assy.		1	See M901 (D6)	
15		SP1	A	Power Steering Pump		1	Alt.	
15		SP2	A	Power Steering Pump		1	Alt.	
15		SP7	A	Power Steering Pump		1	Alt.	
16		HT2	A	Header Tank		1	See M901 (C2)	
17		3060A1219	A	Steering Oil Reservoir		1		
18			A	Fuel Oil Reservoir		1	See M902 (A7)	
19	AEC	AB6202 ⁵	A	Inlet Manifold - Rear		1		
20	AEC	AB6201 ⁶	A	Inlet Manifold - Front		1		
*	AEC	A13586 ⁸	D	Belt-Alternator Drive		3		
*	AEC	A1/13529 ⁹	D	Belt-Alternator Drive		3		
21	AEC	A2/22828 ¹⁰	D	Coupling Shaft - Fuel pump Dr		1	Part of A1/4740	
*	AEC	243522 ¹¹	D	Coupling - D.P.A. Pump 1				
22	AEC	A1/21781 ¹²	D	Crankshaft Pulley		1		



ITEM	MAN. REF.	PART NUMBER	A/D	ASSEMBLY - A	DETAIL - D	QTY.	REMARKS	ISSUE
				DESCRIPTION				
		EN52	A	Engine Unit		1		
1		CA/FF14	A	Fluid Flywheel		1	See M902 (C6)	
2	CAV	7019B69AE →	A	Fuel filter		1	LML No.602648	
3		SM14A	A	Starter Motor		1		
4		FP72	A	Fuel Pump		1		
4		FP73	A	Fuel Pump - Simms		1	Alt.	
5	AEC	A1/0826 →	A	Fan - Complete		1		
6		CA/DY35	A	Alternator		1		
			A	Alternator - Simms		1	Alt.	
7	LML	602438 →	A	Power Steering Reservoir		1		
8		3040A809	A	Inlet Manifold		1		
9		3040A733	A	Exhaust Manifold		1	See M901 (D6)	
10		SP2	A	Power Steering Pump		1		
*		3040A777	A	Engine Mounting Bracket - Front		1		
11	AEC	78-761 →	A	Oil Filter		1	LML No.602647 PH2880 CANISTER	
12		HT3	A	Header Tank		1	HT3	
*	LML	605401D →	A	Injector		6		
				<u>Note</u> For details of Fuel pipwork on Engine Refer to Fuel System - Front End				





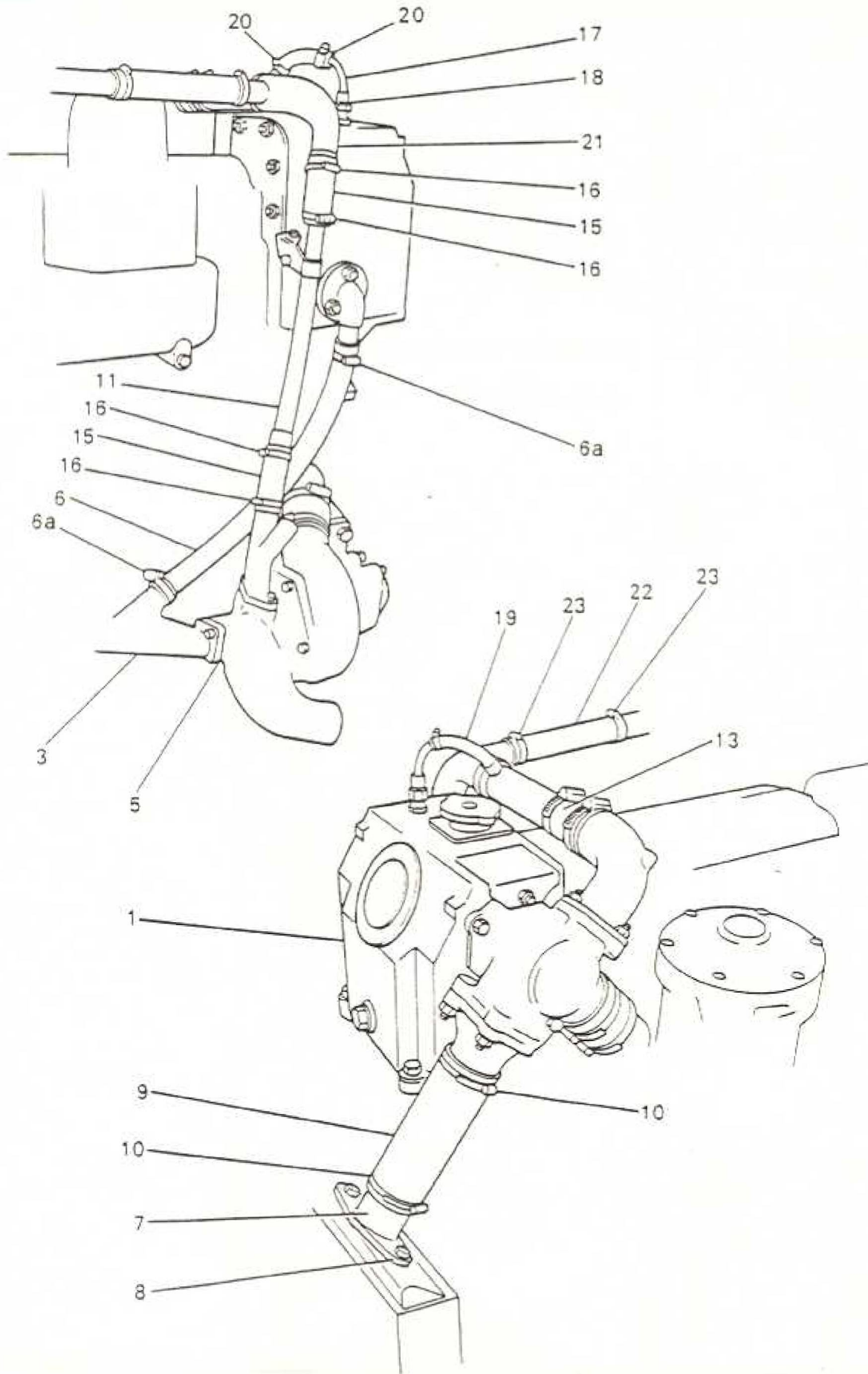
ITEM	MAN. REF.	PART NUMBER	A/D	ASSEMBLY * A	DETAIL * D	QTY.	REMARKS	ISSUE
				DESCRIPTION				
1	AEC	R6218	A		Accelerator Pad & Extension	1		
*	AEC	R10221	D		Pad-Accelerator	1		
*	AEC	C25538	D		Extension	1		
2	AEC	R10154	D		Accelerator Pedal Lever	1		
*		21461-232	D		Bolt-Lever to Shaft	1		
*		21661-003	D		Nut	1		
*		21137-571	D		Washer	2	Use up 21137-512	
3	AEC	R1-10376	D		Accelerator Pedal Shaft	1	Use up R1/10375 on C.A.V. Equip. only.	
*		216113-403	D		Key-Shaft	2		
4	AEC	R2-1230	A		Front Relay Shaft & Brk.	1		
5	AEC	R1-10372	D		Relay Shaft	1		
*		26113-403	D		Key-Shaft	2		
*		21131-336	D		Washer-Shaft	2		
6	AEC	Z10232	D		Bush-Shaft	2		
7	AEC	R1749	A		Relay Shaft Support Tube	1		
8	AEC	R5906	A		Lever - R/H - Relay Shaft	1		
9	AEC	R5911	A		Lever - L/H - Relay Shaft	1		
10	AEC	Z4-43711	D		Adjusting Screw - Lever L/H	1		
*		21661-033	D		Nut-Screw	1		
11		21461-217	D		Bolt-Levers	2		
*		21661-002	D		Nut-Levers	2		
*		21137-569	D		Washer	4	Use up 21137-511	

ITEM	MAN. REF.	PART NUMBER	ASSEMBLY - A DETAIL - D		QTY.	REMARKS	ISSUE
			A/D	DESCRIPTION			
12		23472-021	D	Lubricator - Shaft	1		
13	AEC	22/47024 ♀	D	Anchor Pins - Springs	1	Throttle Control	
*		21131-329	D	Washers-Pins	1		
*		21122-052	D	Split Pins - Pins	1		
*		21668-123	D	Nuts-Pins	1		
14		21366-386	D	Bolt-Brk to Frame	4		
*		21661-002	D	Nut	4		
*		21137-569	D	Washer	8	Use up 21137-511	
15		3074R114	A	Throttle Tube - Complete	1		
*	AEC	R2270 ♀	A	Tube & Ends	1	AEC Engine	
*	AEC	R15663 ♀	D	Tube	1		
*	AEC	R15204 ♀	D	End - Tube	2		
*	AEC	R17119 ♀	D	Fork End	2		
*		21621-122	D	Locknut-Fork End	2		
*	AEC	Z49314 ♀	D	Pin-Fork End	2		
*		21131-329	D	Washer - Pin	2		
*		21122-052	D	Split Pin	2		
15	LML	604471 ♀	A	Accelerator Control Part	1	In place of 3074R 114 on Leyland Engine only.	
<u>ADDITIONAL ITEMS FOR SCG SWITCH ONLY</u>							
*	AEC	V1-16886 ♀	D	Bracket-Switch	1		
*		21461-231	D	Bolt-Bracket	1		
*		21461-217	D	Bolt-Bracket	1		
*		21461-233	D	Bolt-Switch	1		
*		21461-235	D	Bolt-Switch	1		
*		21668-123	D	Nut-Switch	3		
*		21668-132	D	Nut-Bracket Bolt	1		
*		21131-329	D	Washer-Bolt	2		
*	AEC	Z30673 ♀	D	Packing Washer-Ball Joint	1		

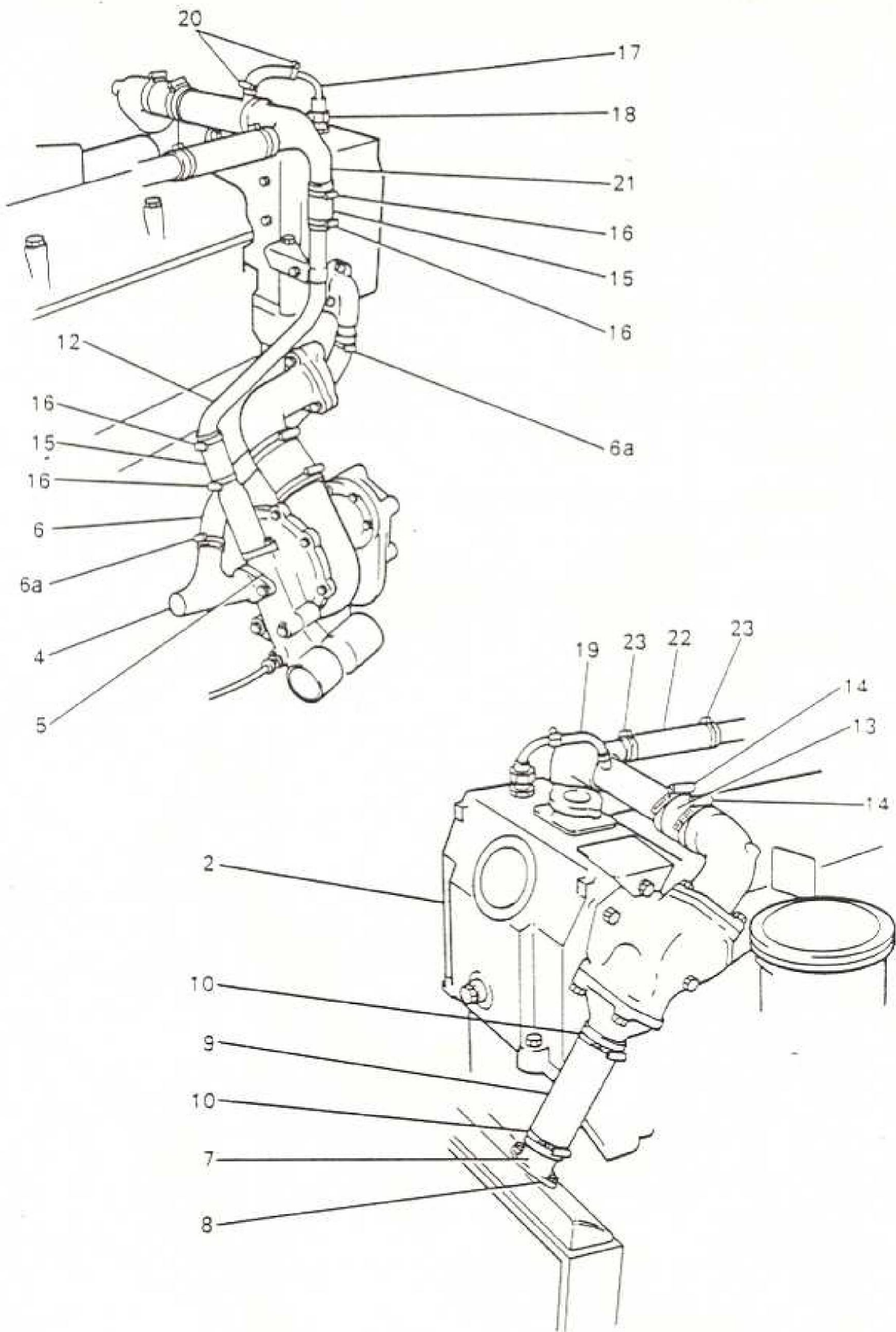
ITEM	MAN. REF.	PART NUMBER	ASSEMBLY - A		DETAIL - D		QTY.	REMARKS	ISSUE
			A/D	DESCRIPTION					
16		3074R-116	A	Throttle Control Rod			1	Pedal Shaft to Relay Lever.	
17	AEC	R3-11380 *	D	Rod			1		
18	AEC	R17131 *	D	Fork End - Slotted			1		
19	AEC	R17119 *	D	Fork End			1		
20		21621-122	D	Lock Nut			2		
21	AEC	Z49314 *	D	Fork End Pin			2		
*		21131-329	D	Washer			2		
*		21122-052	D	Split Pin			2		
22	AEC	AB4203 *	A	Spring - Throttle Control	1				
*		3074R-128	D	Arens Stop Control			1	Alt.	
*		3074R-126	D	Arens Stop Control - Comp.			1		
*	AEC	A8545 *	D	Pin - For End			1	Part of 3074R-126	
*		21313-100	D	Screw - Stop Cont. to Fuel Pump Brk.			2		
*		21611-115	D	Nut-Screw			2		
*		21137-559	D	Washer			2	Items not required	
*	AEC	A83085 *	D	Support Bracket			1	for D.P.A. Pump	
*		411-226	D	Clip - Control Cable			1	Step Control	
*	AEC	Z13/30782 *	D	Screw-Clip			1		
*	AEC	Z5/30602 *	D	Washer-Screw			1		
*	AEC	Z2/32056 *	D	Nut-Screw			1		
23		R5918	A	Lever-Shaft			1		
*	AEC	R3/11291 *	D	Lever			1		
*	AEC	Z3/10214 *	D	Bush-Lever			2		

ITEM	MAN. REF.	PART NUMBER	A/D	ASSEMBLY - A	DETAIL - D	QTY.	REMARKS	ISSUE
				DESCRIPTION				
24		21461-232	D	Clamp Bolt - Lever to Shaft		1		
*		21661-003	D	Nut		1		
*		21137-571	D	Washer		2	Use up 21137-512	
*		21461-326	D	Clamp Bolt - Exit to Lever		1		
*		21661-003	D	Nut		1		
*		21137-571	D	Washer		2	Use up 21137-512	
25	AEC	R3-11244	D	Lever-Shaft		1		
*		26113-403	D	Key		1		
*	AEC	Z3-10236	D	Bush-Lever		1		
26		3074R119	A	Throttle Control Rod-Pedal Shaft to Switch		1		
27	AEC	5131-1	D	Ball Joint R/H		1		
28	AEC	5131-7	D	Ball Joint L/H		1		
*		21621-122	D	Locknut R/H		1		
*		21621-722	D	Locknut L/H		1		
29	AEC	R41358	A	Control Rod		1		
*	AEC	R411313	D	Rod		1		
*		21621-103	D	Nut		1		
30		21461-219	D	Bolt-Ball Joint		1		
*		21668-132	D	Nut-Ball Joint		2		
31		21461-218	D	Bolt-Ball Joint-Switch		1		
*	AEC	Z49322	D	Fork End Pin-Lever - Pedal Shaft		1		
*		21131-327	D	Washer-Pin & Bolt		2		

ITEM	MAN. REF.	PART NUMBER	A/D	ASSEMBLY * A	DETAIL * D	QTY.	REMARKS	ISSUE
				DESCRIPTION				
32		3061C-73	A	Pedal Lever Brk. Accelerator		1		
*	AEC	V7306	A	Bracket-Accelerator Pedal		1		
*	AEC	V2-16844	D	Bracket		1		
*	AEC	Z1-50481	D	Boss		1		
*	AEC	Z1-43419	D	Operating Screw		1		
*	AEC	21661-033	D	Locknut		1		
*	SCG	6966	A	Accelerator Switch		1	Alt.	
*	SCG	6769	A	Accelerator Switch		1	Alt.	

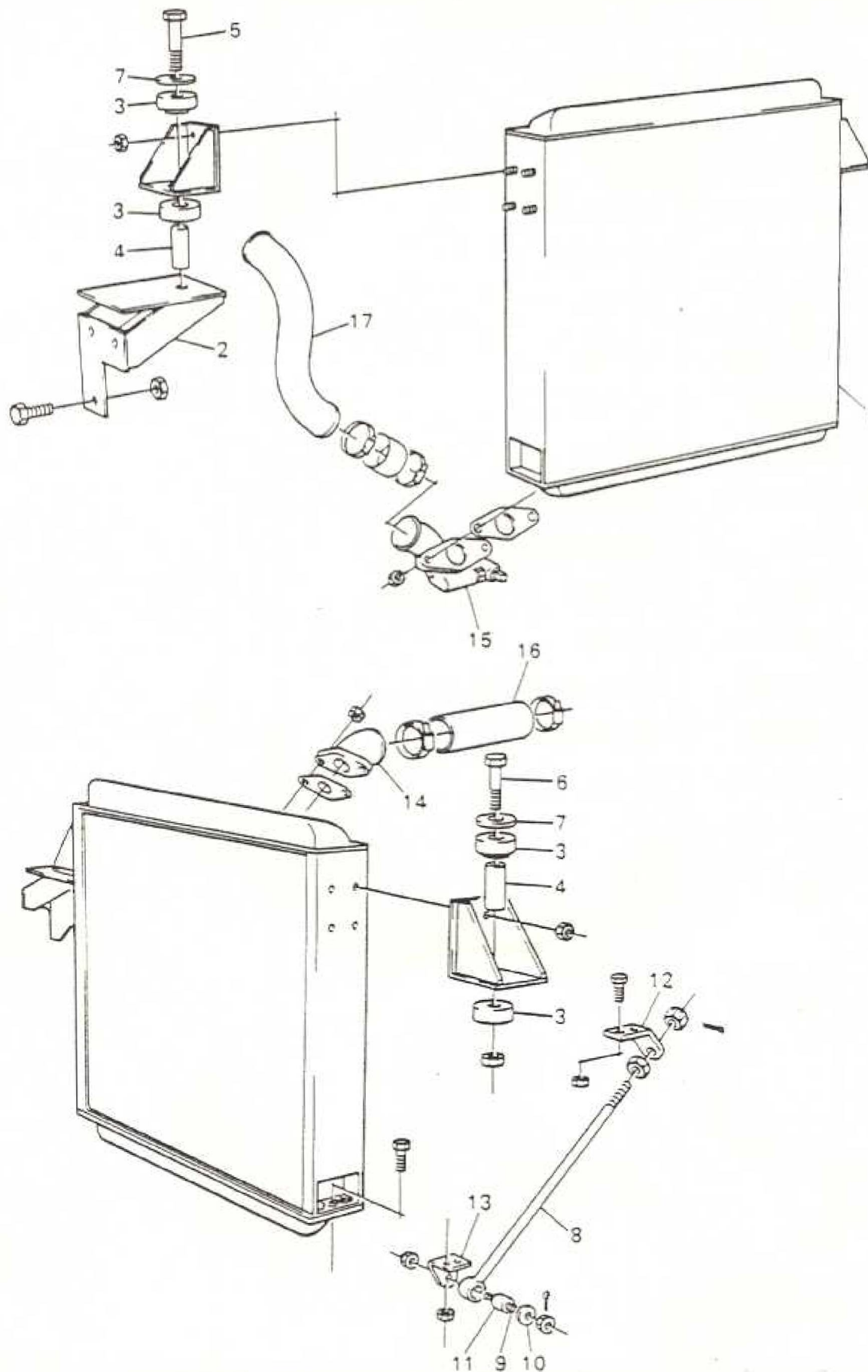


ITEM	MAN. REF.	PART NUMBER	A/D	ASSEMBLY - A	DETAIL - D	QTY.	REMARKS	ISSUE
				DESCRIPTION				
1		HT2	A	Header Tank		1	A.E.C. Engine	
2		HT3	A	Header Tank		1	Leyland Engine	
3	AEC	A5-25752	D	Filler, Pipe & Saloon Htr.Ret		1	A.E.C.	
4	AEC	610502	D	Filler, Pipe & Saloon Htr.Ret		1	Leyland	
5		251-63	D	Joint		1		
*		21661-002	D	Nut		2	A.E.C.	
*		21621-102	D	Nut		2	Leyland	
*		21137-159	D	Washer		2	A.E.C.	
*		21137-016	D	Washer		2	Leyland	
6		3096-62	D	Water filler hose		1		
6a		23712-406	D	Clip		2		
7	AEC	N4-10723	D	Radiator Top Pipe		1		
8		243989	D	Joint		1		
*		21668-123	D	Nut		2		
*		21131-329	D	Washer		2		
9		3096-41	D	Hose		1		
10		23712-412	D	Clip		2		
11	AEC	A5-25755	D	Water By-Pass Pipe		1	A.E.C.	

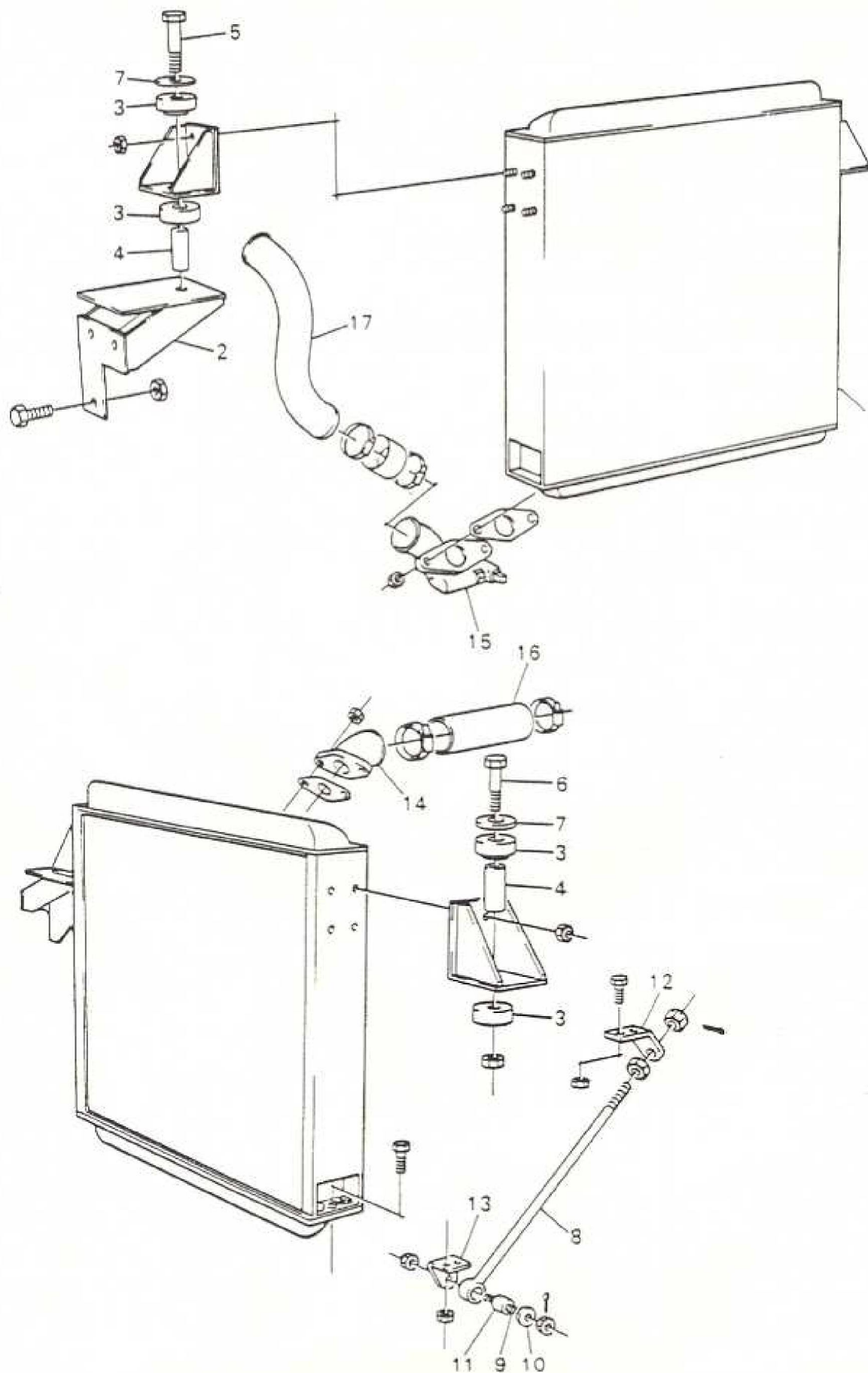


C4ENGINE COOLING SYSTEM
HEADER TANK AND
WATER PIPING

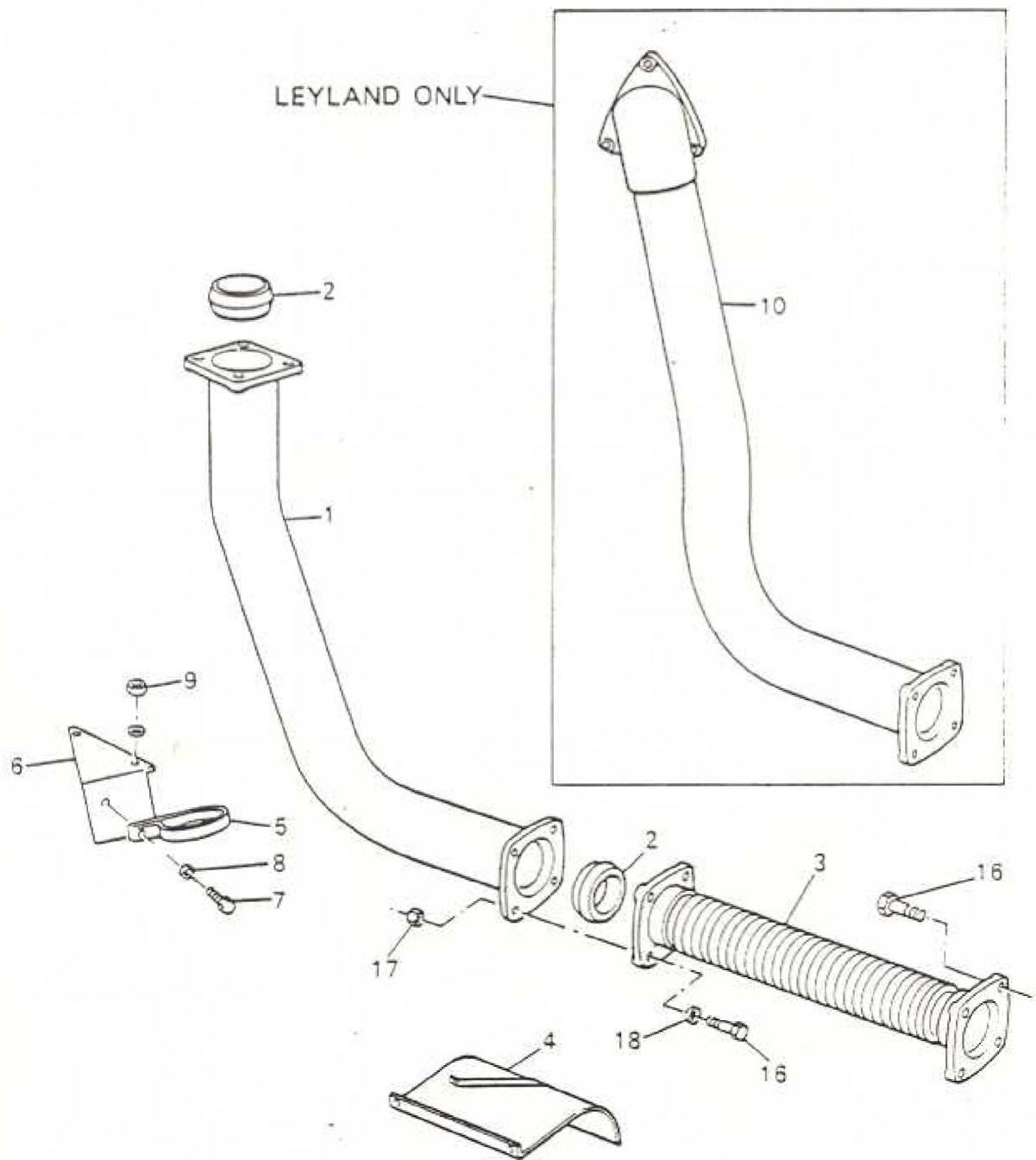
ITEM	MAN. REF.	PART NUMBER	A/D	ASSEMBLY * A	DETAIL * D	QTY.	REMARKS	ISSUE
				DESCRIPTION				
12	LML	608723	D	Water By-Pass Pipe		1	Leyland	
*	AEC	A1-83092	D	Bracket		1		
*	AEC	Z2-31368	D	Clip		1		
*	AEC	21366-386	D	Bolt		1		
*		21661-002	D	Nut		1		
*		21137-511	D	Washer		1		
13		3096-76	D	Hose		1		
14		23712-410	D	Clip		2		
15		3096-43	D	Hose		2	Usage 603494	
16		23712-406	D	Clip		4		
17	AEC	A2-2497	D	Air Pipe Assy		1		
18		132-3	D	Cone Nut		1		
19		3096-78	D	Hose		1		
20		23712-403	D	Clip		2		
21	AEC	N6-0441	D	De-areator Pipe Assy.		1		
22		3096-75	D	Hose		1		
23		23712-407	D	Clip		2		



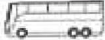
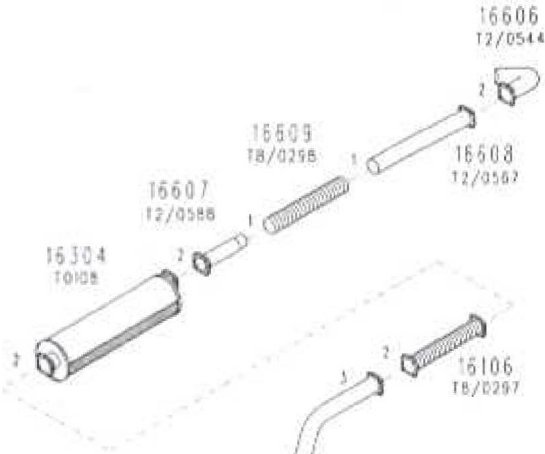
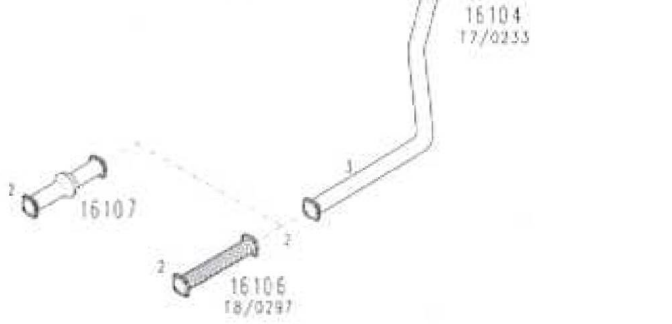

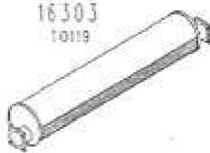



ITEM	MAN. REF.	PART NUMBER	A/D	ASSEMBLY - A	DETAIL - D	QTY.	REMARKS	ISSUE
				DESCRIPTION				
1		RD55	A	Radiator Complete CA/RD 37		1	Use up RD49	
2	AEC	N16244	D	Bracket-Radiator O.S.		1		
		21366-399	D	Bolt - Bracket		4		
		21668-123	D	Nut - Bracket Bolt		4		
3	AEC	N11744	D	Mounting Pads		4		
4	AEC	Z8-44803	D	Distance Piece		2		
5		21461-264	D	Bolt-Mounting		1		
		21668-125	D	Nut-Bolt		2		
6		21461-265	D	Bolt-Mounting		1		
7	AEC	Z6-30635	D	Washer		2		
8	AEC	N1-2403	A	Stay Rod-Rad. to Frame		1		
	AEC	N12179	D	Stay Rod		1		
	AEC	N17102	D	Rod End		1		
9	AEC	N11847	D	Pin-Stay Rod		1		
10	AEC	Z6-30636	D	Washer-Stay Rod		1		
		21621-143	D	Nut-Stay Rod		2		
		21122-010	D	Split Pin		2		
11	AEC	Z10662	D	Harris Flex. Bush		1		
		21621-105	D	Nut-Rod		2		
		21122-034	D	Split Pin		1		



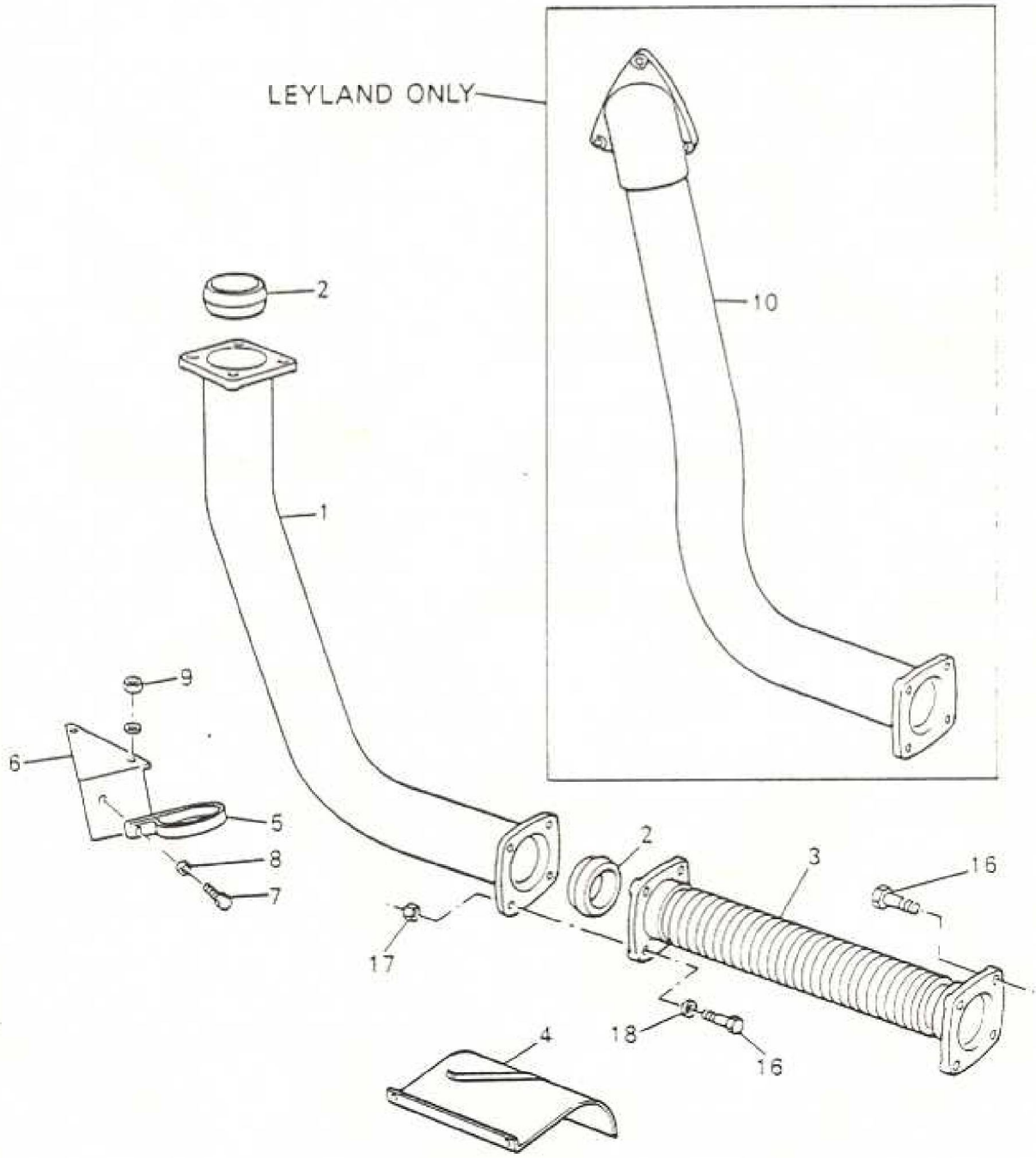
ITEM	MAN. REF.	PART NUMBER	A/D	ASSEMBLY - A	DETAIL - D	QTY.	REMARKS	ISSUE
				DESCRIPTION				
12	AEC	N11916	D	Tie Rod Bracket Frame		1		
		21461-215	D	Bolt-Bracket to Frame		2		
		21668-132	D	Nut-Bolt		2		
	AEC	N2-10771	D	Pipe-Rad. to Pump		1		
	AEC	S13346	D	Adapter-Pipe		1		
		23131-126	D	Washer-Adapter		1		
		3096-41	D	Hose.Rad. to Header Tank		1		
		3096-15	D	Hose-Elbow to Rad.		1		
23712-412		D	Jubilee Clip - Hoses		4			
13	AEC	N17288	D	Tie Rod.Bracket - Radiator		1		
		21461-205	D	Bolt-Bracket		2		
		21668-121	D	Nut-Bracket		2		
14	AEC	N4/410723	D	Radiator Pipe - Top		1		
15	AEC	3071N231	D	Radiator Pipe - Bottom		1		
		78-856	D	Drain Cock		1		
		Z2/32066	D	Back Nut		1		
		Z43989	D	Joint		2		
16		3096-41	D	Hose - Rad to Header Tank		1		
17		3096-15	D	Hose - Elbow to Rad.		1		
		23712-412	D	Jubilee Clip - Hoses		4		



Type 	 RHD	AEC 
ROUTEMASTER LONDON BUS		
ROUTEMASTER	 	
REGAL MK.4&5 REGENT MK.4&5	 	

160003

ITEM	MAN. REF.	PART NUMBER	A/D	ASSEMBLY * A	DETAIL * D	QTY.	REMARKS	ISSUE
				DESCRIPTION				
1	AEC	T7-0232	A	Exhaust Pipe - 1st Section		1	CA-FE1 Only	
*	AEC	T7/11029	D	Pipe		1		
*	AEC	T11117	D	Flange		2		
5	AEC	T3/11820	D	Clip		1		
*		21486-319	D	Bolt - Flange		2		
*		21486-320	D	Bolt - Flange		2		
*		21664-401	D	Nut - Flange Bolt		4	Use up 21664-311	
*		21137-016	D	Washer - Flange Bolt		4		
2	AEC	T13004	D	Spigot - Flange		1		
3	AEC	T8-0297	A	Exhaust Pipe-Flex. 2nd. Section		1	Use up T7-0250	
*	AEC	T8-11030	D	Flexible Pipe		1		
*	AEC	T5/0221	A	Flange & Pipe End Comp.		2		
*	AEC	T5/11042	D	End		1		
*	AEC	T11117	D	Flange		1		
*		21486-319	D	Bolt-Flange		4		
*		21664-401	D	Nut-Flange Bolt		4	Use up 21664-311	
*		21137-016	D	Washer-Flange Bolt		4		
*	AEC	T13004	D	Spigot - Flange		1		
4	AEC	T1-0620	A	Shield - Exhaust Pipe		1		
*	AEC	A1-83399	D	Shield		1		
*	AEC	T3-10919	D	Strap-Shield		1		
*		21461-202	D	Bolt-Shield		3		
*		21668-121	D	Nut		3		

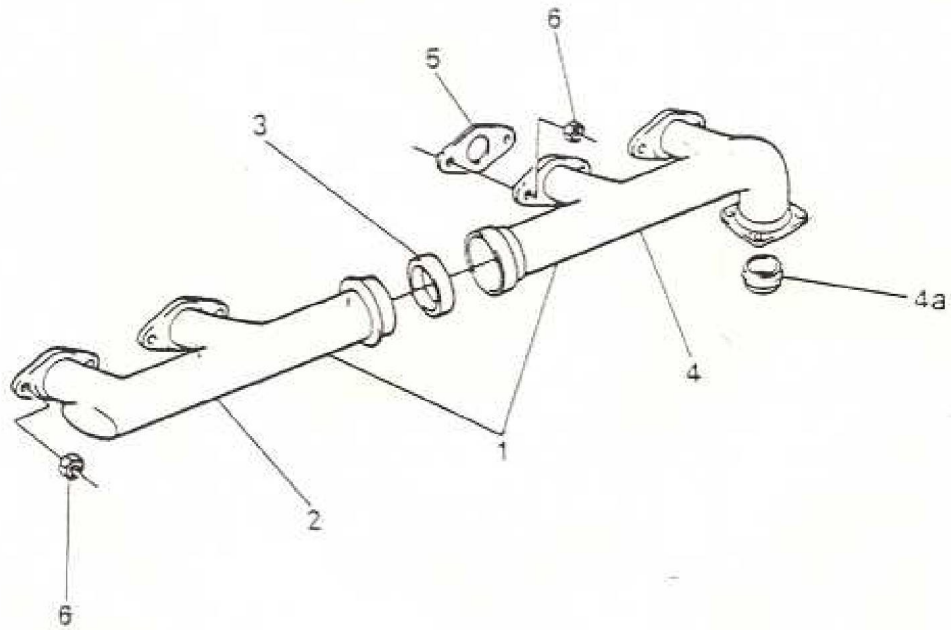
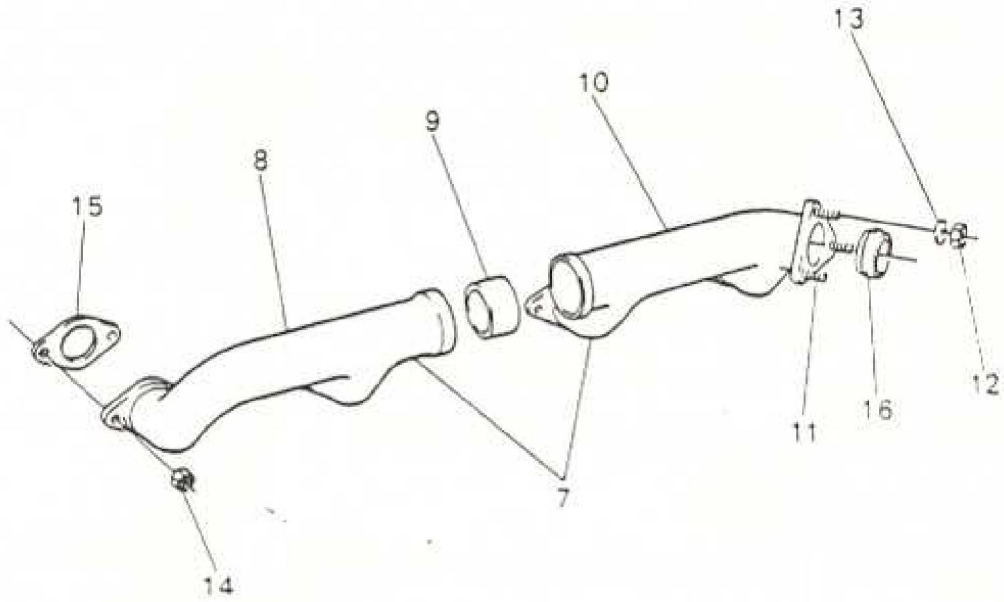


D4EXHAUST SYSTEM
FRONT END

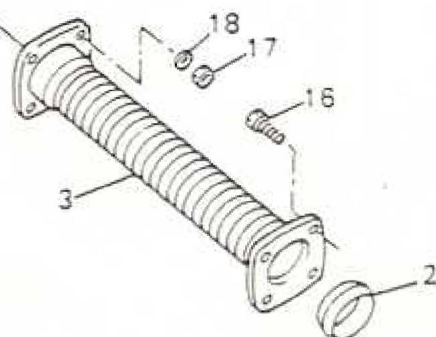
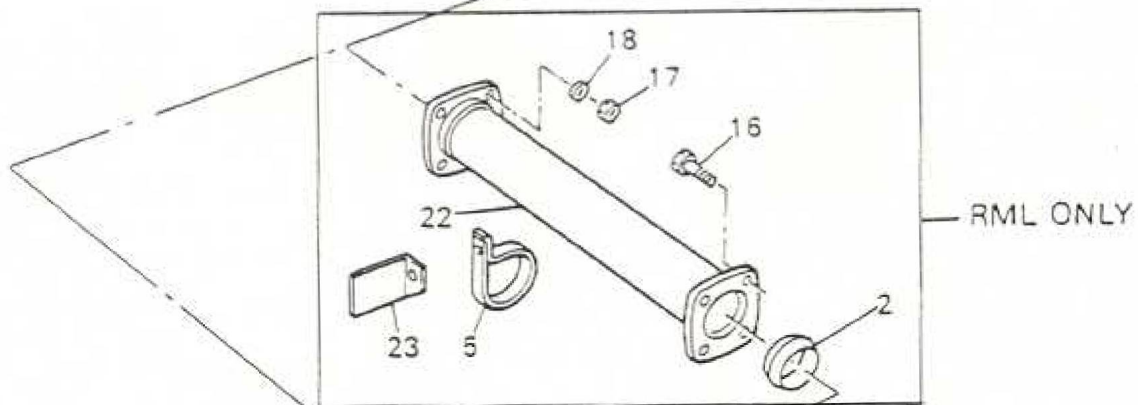
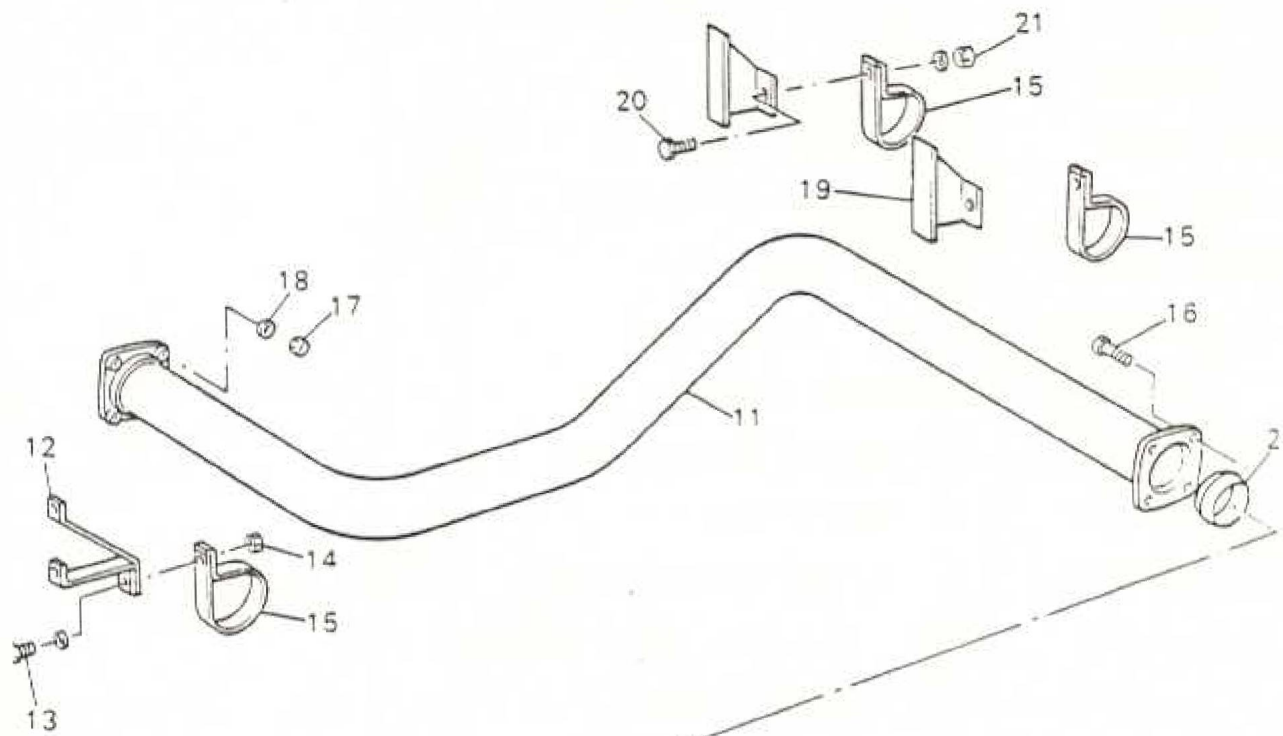
FICHE NO.

M901

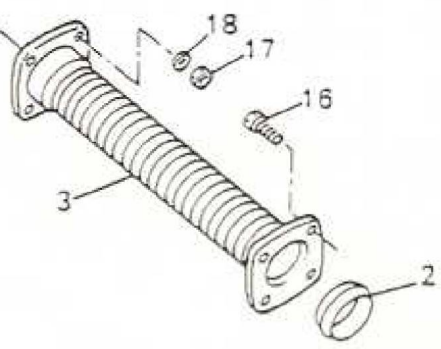
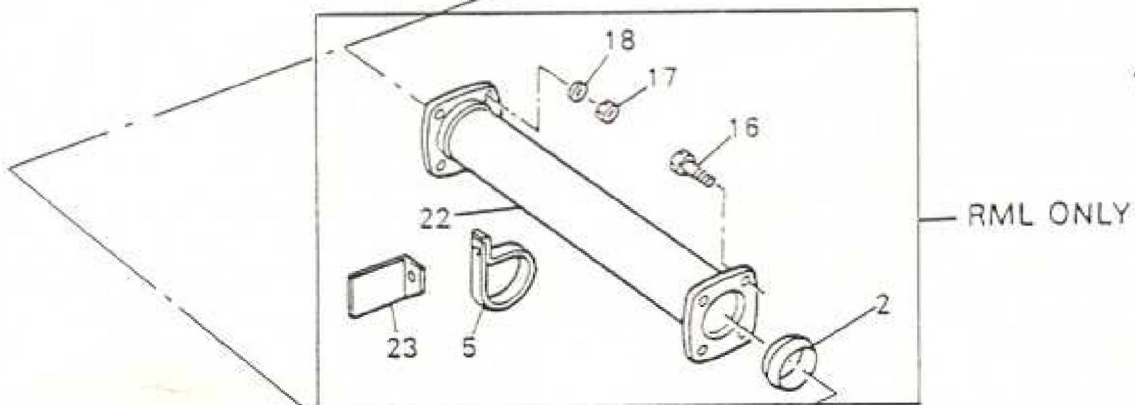
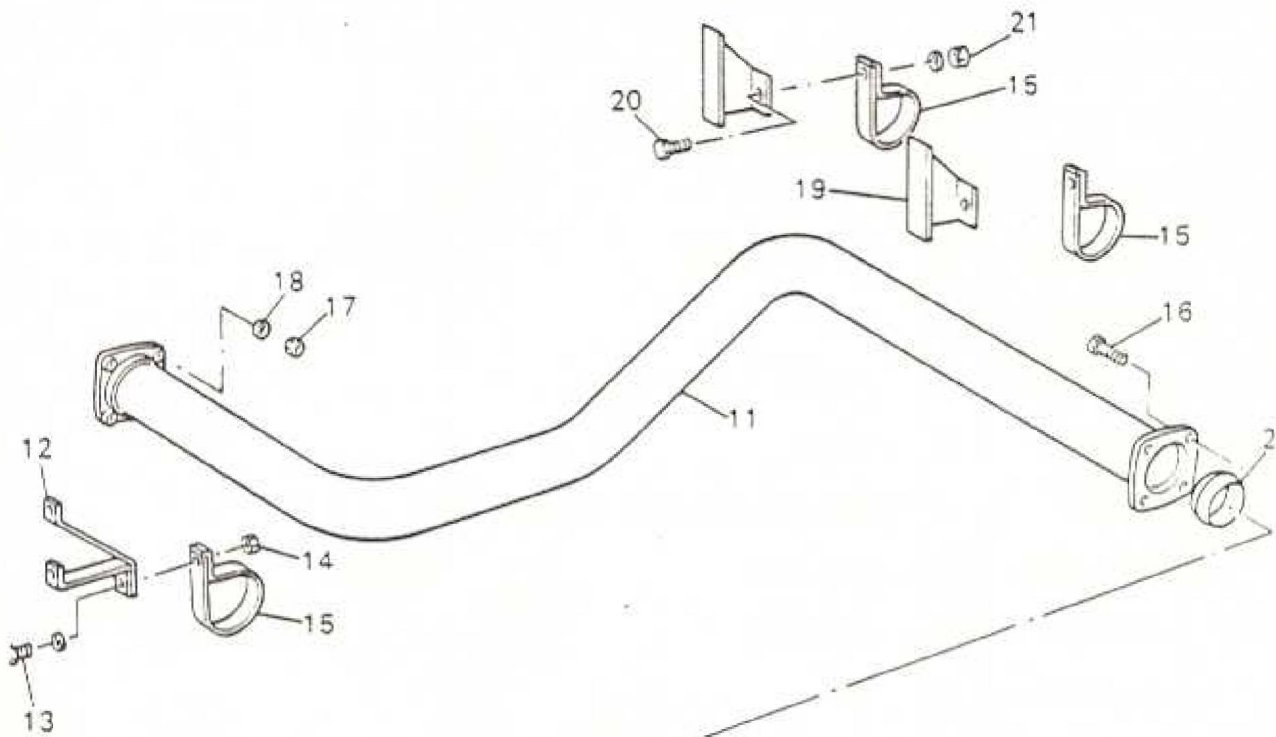
ITEM	MAN. REF	PART NUMBER	ASSEMBLY - A DETAIL - D		QTY.	REMARKS	ISSUE
			A/D	DESCRIPTION			
6	AEC	Z2-48430	D	*Bracket Exhaust Pipe Clip 1st Section	1		
9		21668-123	D	Nut-Bracket	2	Bolts on Engine Section	
7		21366-400	D	Bolt-Pipe Clip to Bracket	1		
8		21661-003	D	Nut	1		
*		Z1137-572	D	Washer	1	Use up 21137-512	
12	AEC	T11412	D	Bracket-Exhaust Pipe 3rd Sect.	1		
*		21461-229	D	Bolt-Bracket to Frame	2		
13		21461-230	D	Bolt-Pipe Clip to Bracket 1			
14		21688-123	D	Nut	3		
10	LML	602865	A	Exhaust Pipe - 1st Section	1	Use with Leyland Engine in place of T7-0232.	



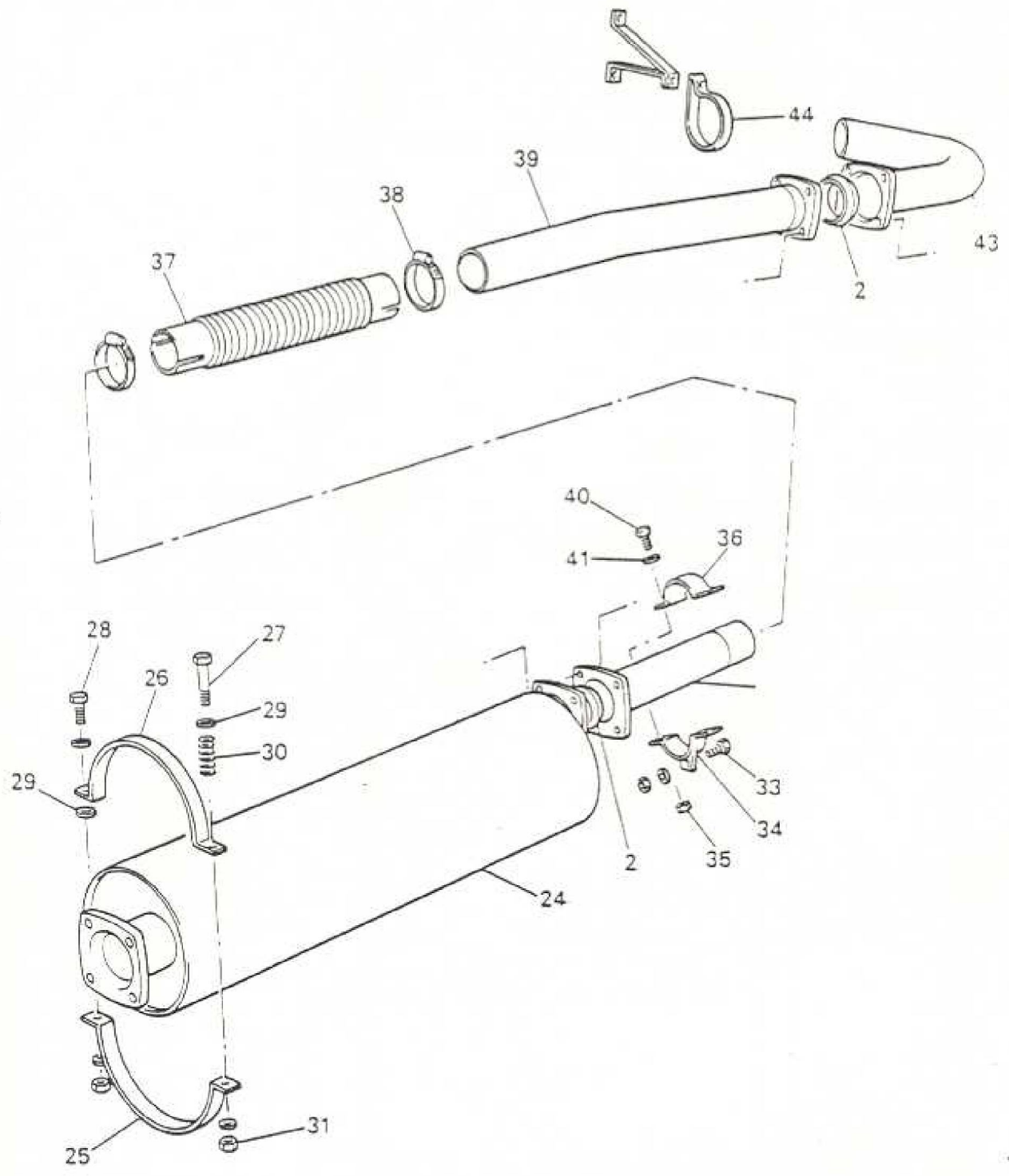
ITEM	MAN. REF.	PART NUMBER	A/D	ASSEMBLY - A	DETAIL - D	QTY.	REMARKS	ISSUE
				DESCRIPTION				
1	AEC	AA7625	A	Exhaust Manifold		1	A.E.C. Engine	
2	AEC	AA7623	A	Exhaust Manifold 1st. Sect		1		
3	AEC	A27603	D	Ring		1		
	AEC	T13004	D	Spigot Flange		1		
4	AEC	AA7624	A	Exhaust Man. Outlet		1		
5	AEC	A5/19411	D	Joint Exhaust Man.		4		
6		21664-402	D	Nut - Exhaust Man.		8		
7		3040A733	A	Exhaust Manifold		1	Leyland Engine	
8	LML	281117	D	Exhaust Manifold-Front 1				
9	LML	227784B	D	Centre Tube		1		
10	LML	281320	A	Exhaust Manifold Rear		1		
11	LML	145257B	D	Stud $\frac{1}{2}$ in. Whit x 25/16 in.		3		
12		21641-405	D	Nut $\frac{1}{2}$ in. Whit - Brass		3		
13		21137-888	D	Washer $\frac{1}{2}$ in. Kolok		3		
14	LML	227915	D	Nut 3/8 in. BSF		5		
15	LML	315548	D	Gasket - Exh Manifold		4	Use up LML 227764	
16	LML	143880	D	Spigot Piece		1		



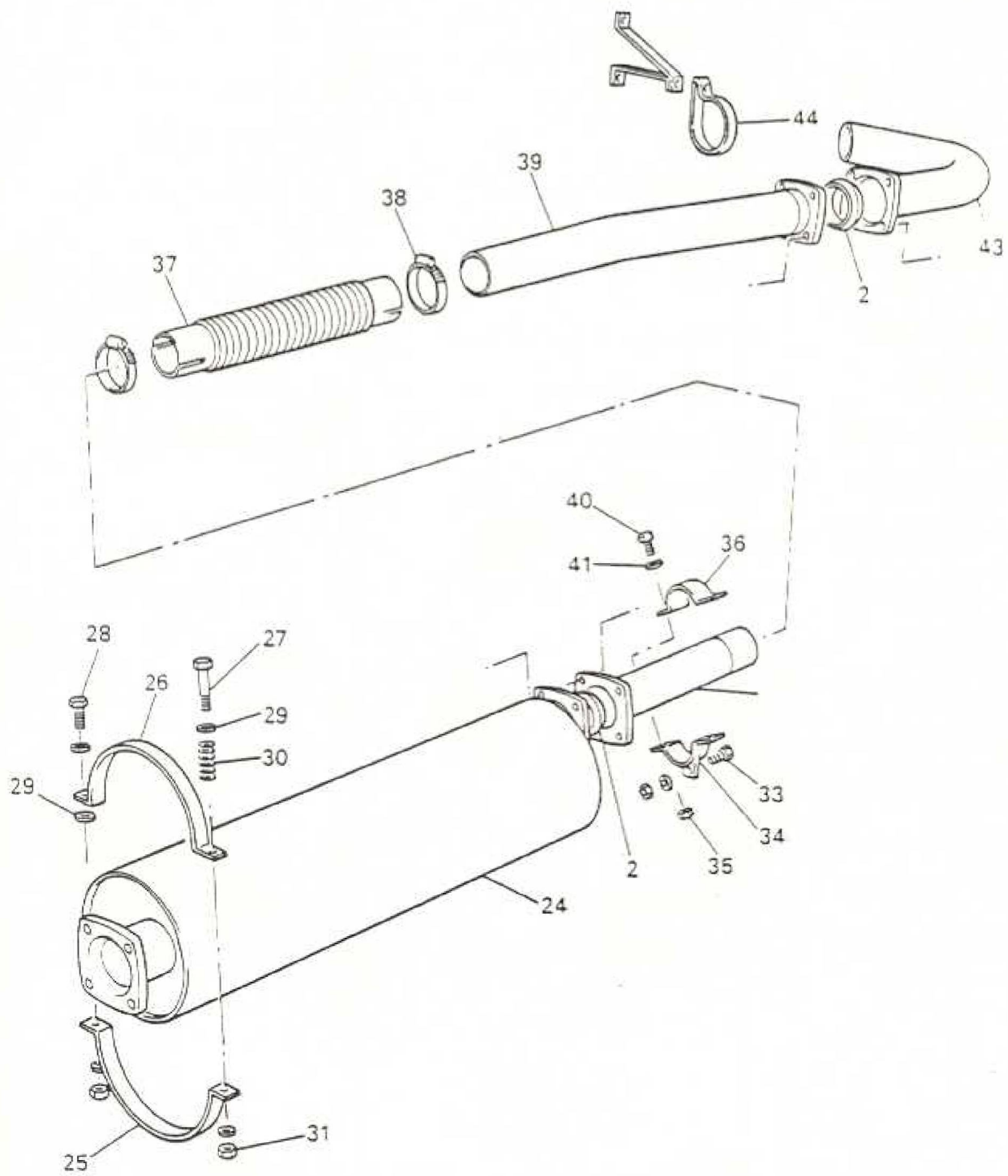
ITEM	MAN. REF.	PART NUMBER	A/D	ASSEMBLY - A	DETAIL - D	QTY.	REMARKS	ISSUE
				DESCRIPTION				
11	AEC	T7-0233	A	Exhaust Pipe 3rd Section		1		
*	AEC	T7/11030	D	Pipe		1		
*	AEC	T11117	D	Flange		2		
15	AEC	T3/11820	D	Clip		3		
16		21486-319	D	Bolt - flange		4	Use up 21461-219	
17		21664-401	D	Nut		4	Use up 21664-311	
18		21137-016	D	Washer		4		
2	AEC	T13004	D	Spigot		1		
19	AEC	T11413	D	Bracket-3rd Sect. Exhaust Pipe		2		
20		21461-230	D	Bolt-Clip		2		
20		21461-229	D	Bolt-Clip		2	CA-C03 Only	
21		21668-123	D	Nut		2		
3	AEC	T8-0297	A	Exhaust Pipe - 4th Sect. Flex.		1	CA-CP1 & CA-CD2	
*	AEC	T8/11030	D	Flexible Pipe		1		
*	AEC	T5/0221	A	Flange & Pipe End Comp.		2		
*	AEC	T5/11042	D	End		1		
*	AEC	T11117	D	Flange		1		
22	AEC	T8-0280	A	Exhaust Pipe 4th Sect. Flex.		1	CA-CD3 & CA-CD6	
*	AEC	T8/11013	D	Pipe		1		
*	AEC	T11117	D	Flange		2		
5	AEC	T3/11820	D	Clip		1		
16		21486-319	D	Bolt-Flange		8		
17		21664-401	D	Nut		8	Use up 21664-311	
18		21137-016	D	Washer		8		
2	AEC	T13004	D	Spigot		2		



ITEM	MAN. REF.	PART NUMBER	A/D	ASSEMBLY = A	DETAIL = D	QTY.	REMARKS	ISSUE
				DESCRIPTION				
23	AEC	T11429	D		Bracket-Clip	1	CA-CD3 & CA-CD6	
*		21461-228	D		Bolt-Bracket Clip	1	CA-CD3 & CA-CD6	
3	AEC	T8/0297	A		Exhaust Pipe 5th Sect. Flex.	1	CA-CD3 Only	
*	AEC	T8/11030	D		Flexible Pipe	1		
*	AEC	T5/0221	A		Flange & Pipe End Comp.	2		
*	AEC	T5/11042	D		End	1		
*	AEC	T11117	D		Flange	1		
16		21486-319	D		Bolt-Flange	4		
17		21664-401	D		Nut	4	Use up 21664-311	
18		21137	D		Washer	4		
2	AEC	T13004	D		Spigot	1		
16		21486-319	D		Bolt-Flange	4	CA-CD6 Only	
17		21664-401	D		Nut-Nut-Flange	4	CA-CD6 Only	
18		21137-016	D		Washer	4	CA-CD6 Only	
2	AEC	T13004	D		Spigot	1	CA-CD6 Only	



ITEM	MAN. REF.	PART NUMBER	A/D	ASSEMBLY = A	DETAIL = D	QTY.	REMARKS	ISSUE
				DESCRIPTION				
24	AEC	T0108	A	Silencer		1		
25	AEC	T3-10913	D	Strap-Silencer		1		
26	AEC	T3-10914	D	Strap-Silencer		1		
27		21461-369	D	Bolt		1	AEC 41-259	
28		21461-232	D	Bolt		1	AEC 41-244	
29		21131-329	D	Washer		4	AEC 134-4	
30	AEC	23-45435	D	Spring		1		
31		21668-123	D	Nut		2	AEC 90-333	
33	AEC	T2-0588	A	Tail Pipe - 1st Section		1	Use up T2-0566	
35	AEC	T1552	D	Support Bracket		1	Use with T2-0588	
36	AEC	T3-11834	D	Clamp Strap		1	Use with T2-0588	
2	AEC	T13004	D	Spigot Pipe - 1st Sect.		2		
		21486-318	D	Bolt Pipe - 1st Sect.		8		
		21664-401	D	Nut - Pipe - 1st Sect.		8	Use up 21664-311,	
							AEC 85-183	
		21137-016	D	Washer - Pipe - 1st Sect.		8	AEC 135-33	
37	AEC	TB-0298	A	Flexible Exhaust Pipe		1		
*	AEC	TB-11031	D	Flexible Pipe		1		
*	AEC	TB-11010	D	Adaptor		2		
38		23712-412	D	Clip-Exhaust Pipe		2	AEC 332-86	
39	AEC	T2-0567	A	Tail Pipe - 2nd Section		1		



ITEM	MAN. REF.	PART NUMBER	A/D	ASSEMBLY - A	DETAIL - D	QTY.	REMARKS	ISSUE
				DESCRIPTION				
*	AEC	T3-11820	D	Clip-2nd. Section		1		
*		21461-230	D	Bolt-2nd Section		1	AEC 41-242	
*		21668-123	D	Nut		1	AEC 90-330	
40		21466-229	D	Bolt		2		
41		21668-132	D	Nut		2	Use with T2-0588	
42		21131-329	D	Washer		2		
43	AEC	T2-0544	D	Tail Pipe - 3rd Section		1		
44	AEC	T3-11820	D	Clip - Pipe 3rd Section		1		
*		21461-230	D	Bolt - Pipe		3	AEC 41-242	
*		21668-123	D	Nut - Pipe		3	AEC 90-332	
		<u>Attaching Parts</u>						
*	AEC	T11415	D	Bracket-Exhaust Pipe		1		
*		21461-258	D	Bolt-Exhaust Bracket		1	AEC 43-181	
*		21668-125	D	Nut-Bolt-Bracket		1	AEC 90-335	
*	AEC	T11417	D	Bracket-Exhaust Pipe		1		
*		21460-230	D	Bolt-Exhaust Bracket		2	AEC 41-242	
*		21668-123	D	Nut-Bracket		2	AEC 90-233	