

22

Index

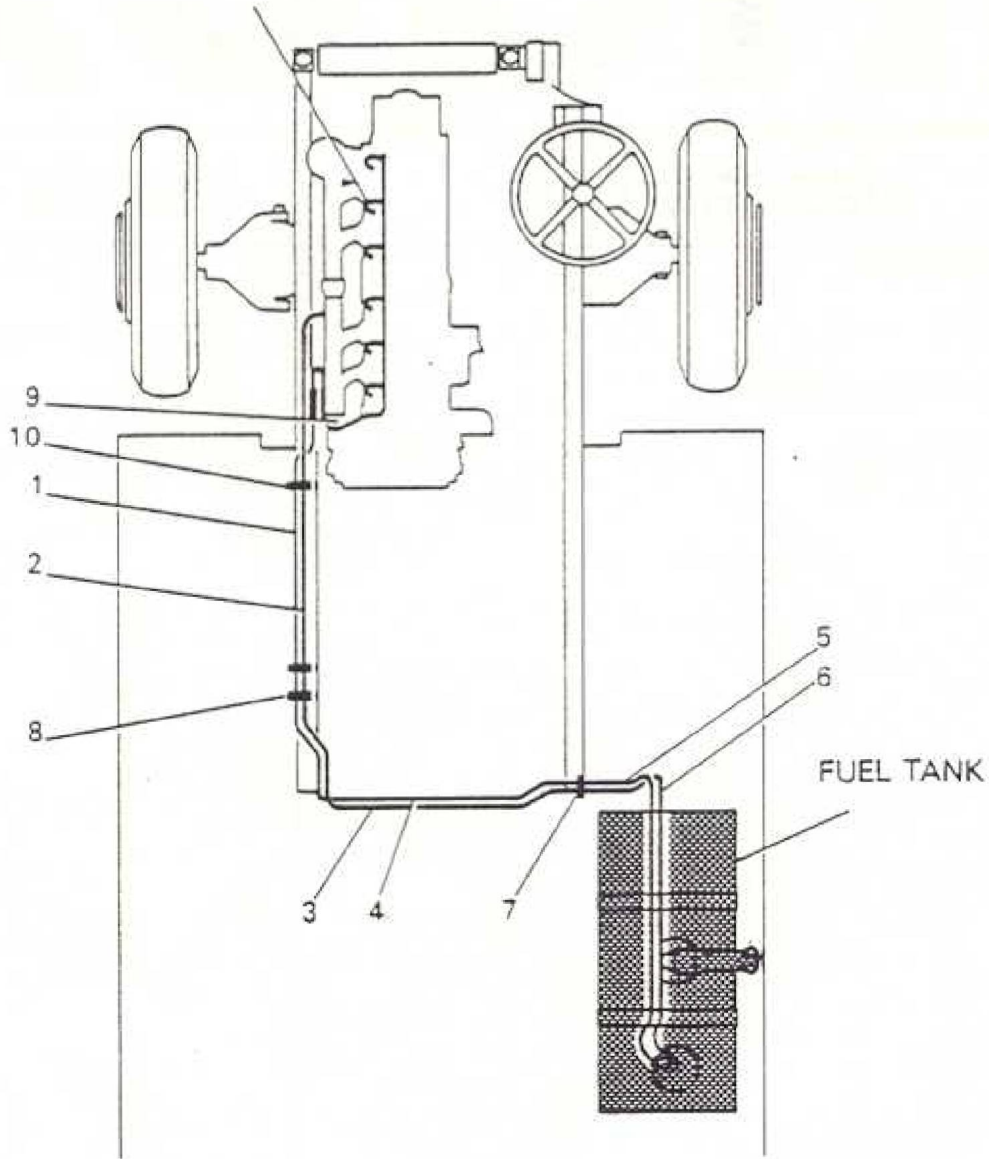
DESCRIPTION	FRAME NO.
FUEL SYSTEM	A2 to B6 (M902)
FLUID FLYWHEEL	C1 to C8 (M902)
PNEUMATIC SYSTEM	D1 to D8 (M902)
GEARBOX UNIT	E1 to E8 (M902)

A1

Index

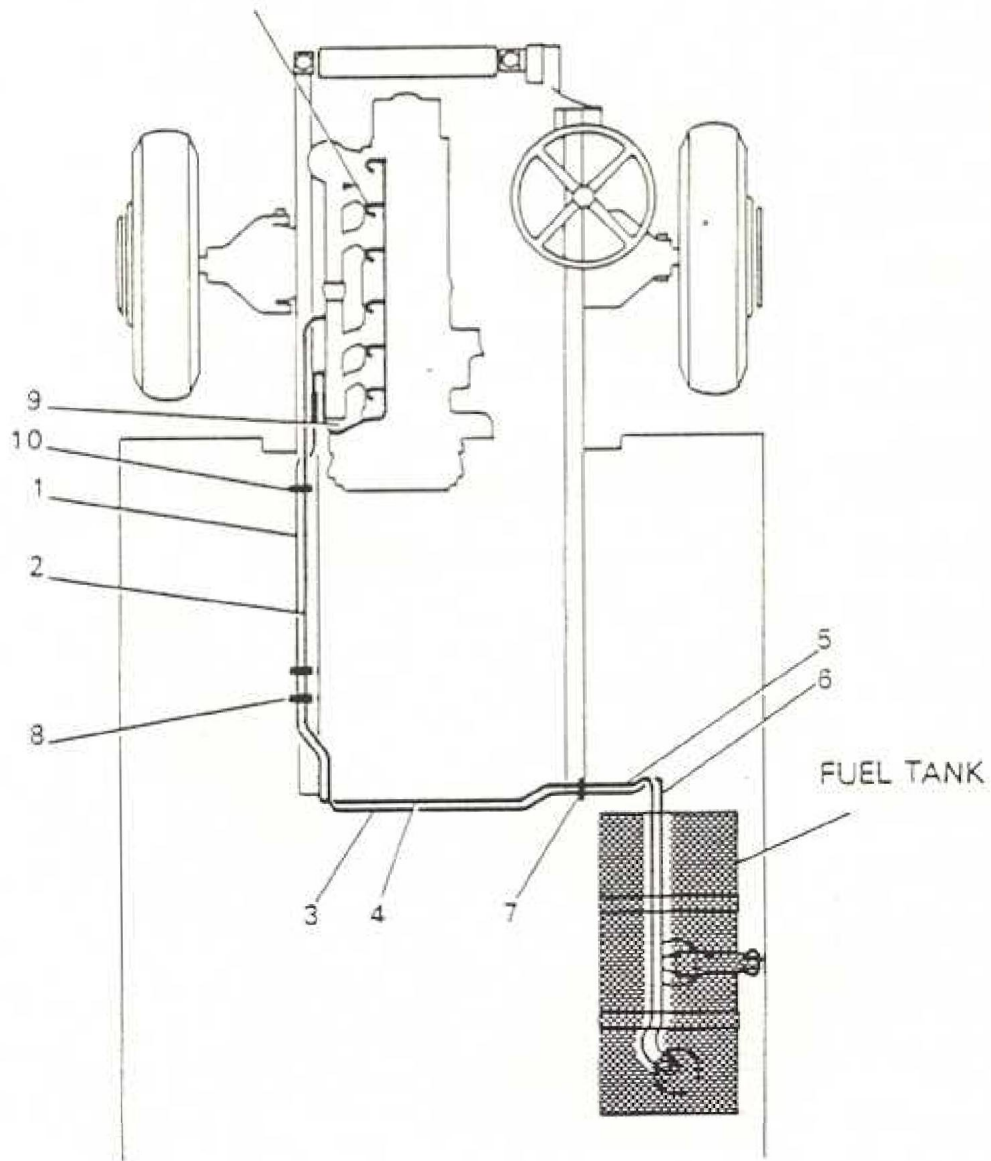
DESCRIPTION	FRAME NO.
FUEL SYSTEM	A2 to B6 (M902)
FLUID FLYWHEEL	C1 to C8 (M902)
PNEUMATIC SYSTEM	D1 to D8 (M902)
GEARBOX UNIT	E1 to E8 (M902)

FUEL PIPING ENGINE

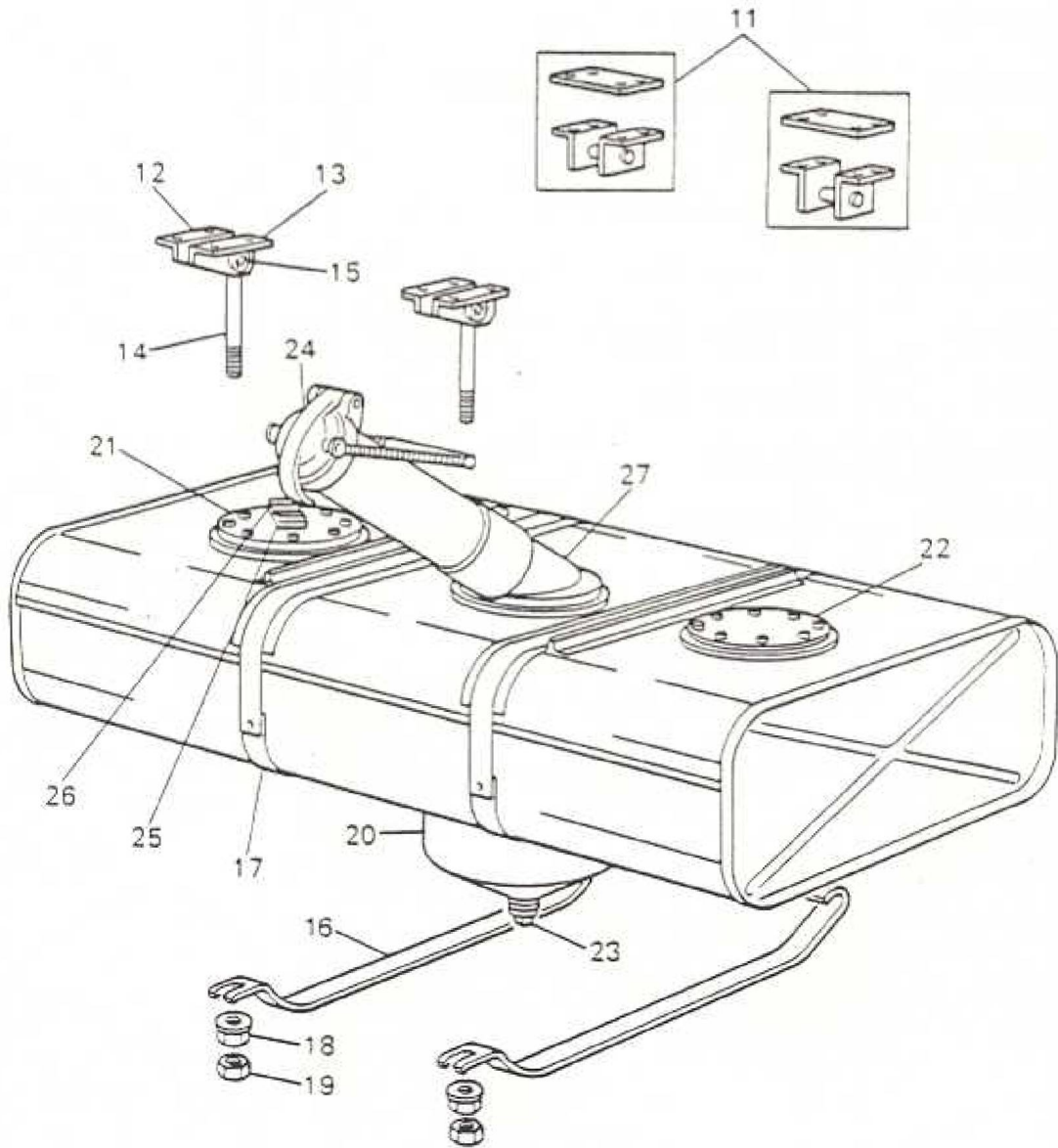


ITEM	MAN. REF.	PART NUMBER	ASSEMBLY = A DETAIL = D		QTY.	REMARKS	ISSUE
			A/D	DESCRIPTION			
1	AEC	S31-0363	A	Pipe - Hose to Adaptor	1		
		11728-107	D	Pipe	1		
		130-17	D	Union - Cone	1		
		132-3	D	Union - Nut	1		
		3085-877					
2	AEC	S31-0362	A	Pipe - Adapter to Hose - Fuel Pipe	1		
		11728-107	D	Pipe	1		
		130-17	D	Union Cone	1		
		132-3	D	Union Nut	1		
		3085-876	D	Label	1		
		310-91	D	Hose - Pipe	1		
		23712-403	D	Clip - Hose (Jubilee)	2		
3	AEC	S27-0301	A	Pipe - Adaptor to Adaptor	1		
		11728-107	D	Pipe	1		
		130-17	D	Union Cone	2		
		132-3	D	Union Nut	2		
		3085-871	D	Label	1		
4	AEC	S27-0304	A	Pipe - Adaptor to Adaptor	1		
		11728-107	D	Pipe	1		
		130-17	D	Union Cone	2		
		132-3	D	Union Nut	2		
		3085-873	D	Label	1		

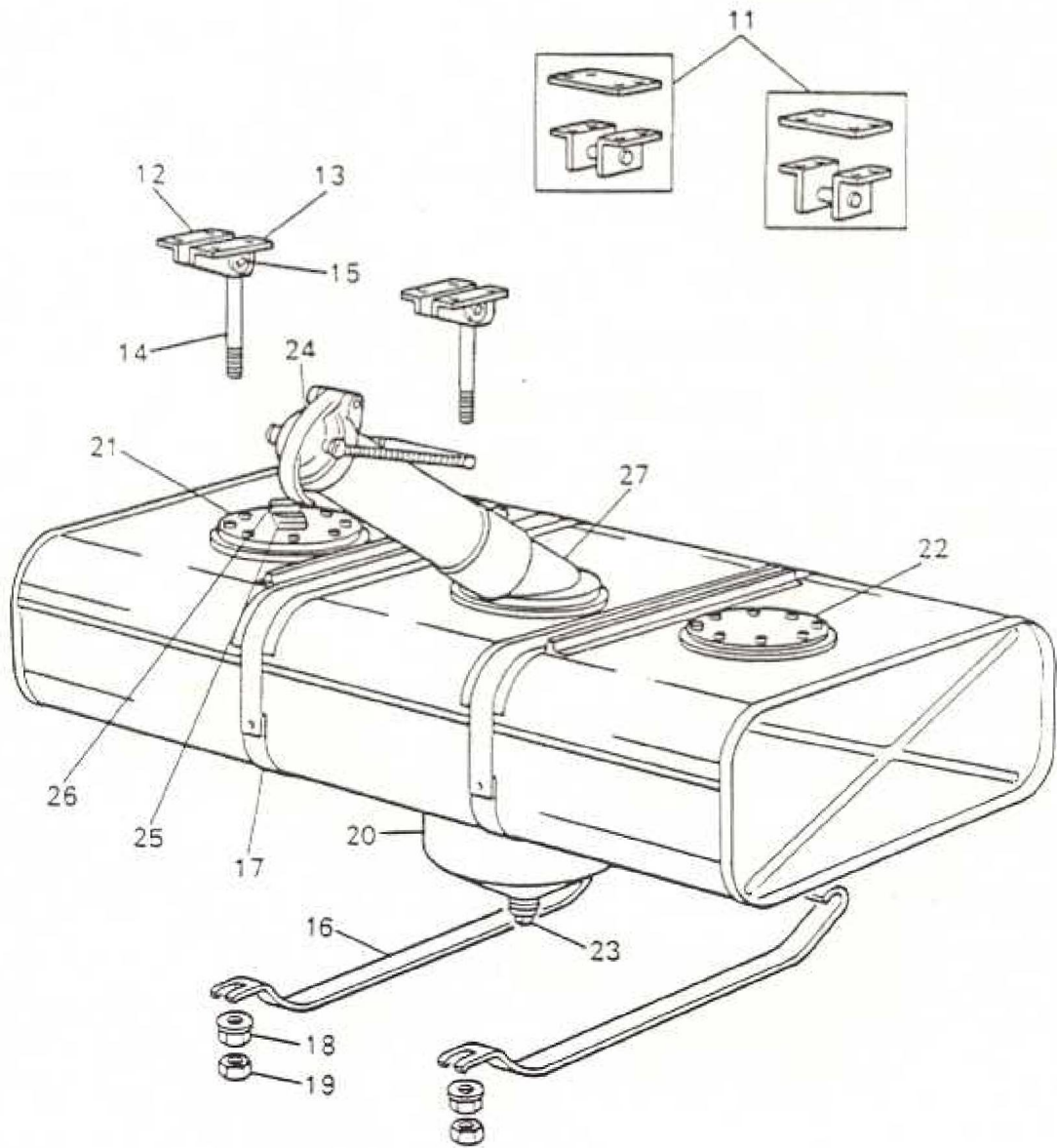
FUEL PIPING ENGINE



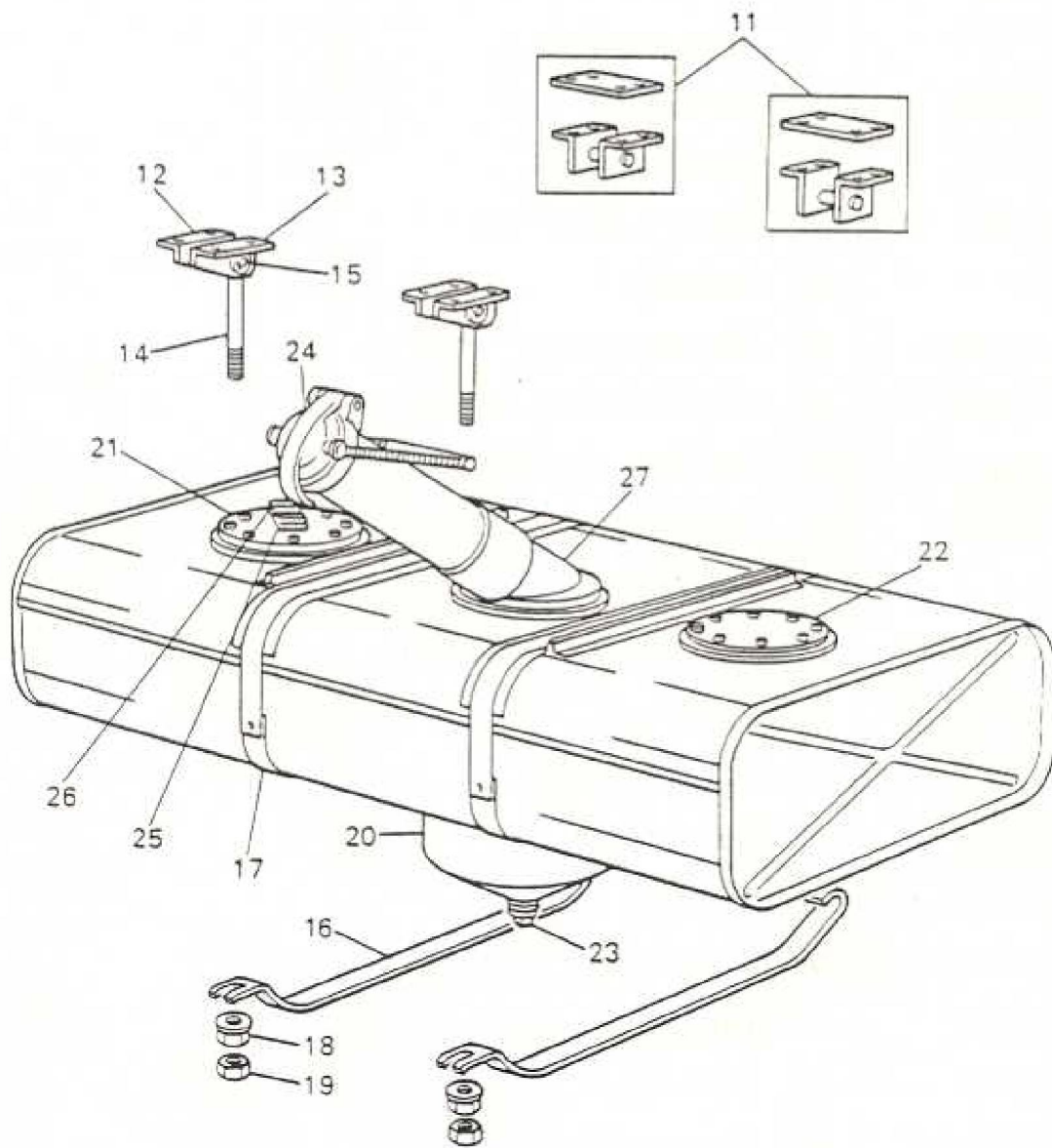
ITEM	MAN. REF.	PART NUMBER	ASSEMBLY - A		DETAIL - D		QTY.	REMARKS	ISSUE
			A/D	DESCRIPTION					
5	AEC	S27-0303	A	Pipe - Adaptor to Tank			1		
		11728-107	D	Pipe			1		
	AEC	130-17	D	Union Cone			2		
	AEC	132-3	D	Union Nut			2		
6	AEC	S26-0399	A	Pipe - Tank to Adaptor			1		
		11728-107	D	Pipe			1		
		130-29	D	Union Cone			1		
		132-10	D	Union Nut			1		
		130-17	D	Union Cone			1		
		132-3	D	Union Nut			1		
		3085-874	D	Label			1		
7	AEC	S1-13321	D	Adaptor			1		
		23215-923	D	Nut			1		
		21131-355	D	Washer			2		
8	AEC	S13316	D	Adaptor			2		
9	AEC	S26-0384	A	Pipe - Gallery to Hose - Fuel Pipe			1		
		11728-107	D	Pipe			1		
		130-17	D	Union Cone			1		
		132-3	D	Union Nut			1		



ITEM	MAN. REF.	PART NUMBER	ASSEMBLY - A		QTY.	REMARKS	ISSUE
			A/D	DETAIL - D			
			DESCRIPTION				
		3060A-1416	D	Clip - Pipe - Crankcase	1		
		21661-003	D	Nut - Clip	1		
		21137-571	D	Washer	1	Use up 21137-512	
		310-91	D	Hose - Gallery Pipe	1		
		23712-403	D	Clip - Hose - Jubilee	2		
10	AEC	Z5-31385	D	Clip - Pipe	4		
		21461-222	D	Bolt - Clip	2		
		21668-132	D	Nut	2		
		21131-327	D	Washer	2		
11	AEC	S1-9088	A	Hinge Bracket - Fuel Tank	2		
	AEC	S3-29200	D	Angle Piece - Bracket	2		
	AEC	S2-29299	D	Plate	1		
	AEC	Z1-47082	D	Pin	1		
12	AEC	S3-29201	D	Support Angle RH	2		
13	AEC	S3-29202	D	Support Angle LH	2		
14	AEC	Z47852	D	Eyebolt	2		
15	AEC	Z1-47081	D	Pin - Eyebolt	2		
		21131-336	D	Washer	2		
		21122-034	D	Split Pin	2		
		FT15	A	Fuel Tank - Complete	1		



ITEM	MAN. REF.	PART NUMBER	ASSEMBLY = A DETAIL = D		QTY.	REMARKS	ISSUE
			A/D	DESCRIPTION			
16	AEC	S304-74	D	Strap - Fuel Tank	2		
17	AEC	499-3864	D	Packing - Strap	2		
18		21661-005	D	Nut - Eyebolt	2		
19		21661-035	D	Locknut	2		
20	AEC	SA0262	A	Sump complete	1		
	AEC	S28920	D	Sump	1		
	AEC	S42703	D	Sump Bush	1		
	AEC	S13011	D	Steady - Feed Pipe	1		
	AEC	S10515	D	Flange	2		
		3075S301	D	Stiffener Plate	2		
	AEC	S1/1720	A	Filler Tube Sub-Assembly	1		
	AEC	S1/1719	A	Filler Tube & Pin	1		
	AEC	S10467	D	Filler Tube	1		
	AEC	Z47095	D	Pin - Filler Tube	1		
21	AEC	S26/0305	A	Adaptor Flange & Feed Pipe	1		
	AEC	S29594	D	Feed Pipe	1		
	AEC	S10517	D	Adaptor Flange	1		
22	AEC	S31005	D	Cover - Flange	1		
23	AEC	103-38	D	Drain Plug	1		
	AEC	Z44905	D	Washer - Plug	1		
24	AEC	S1437	A	Filler Cap Complete	1		
	AEC	S10639	D	Filler Cap	1		
	AEC	Z5/30684	D	Washer	1		
	AEC	Z30898	D	Retainer	1		

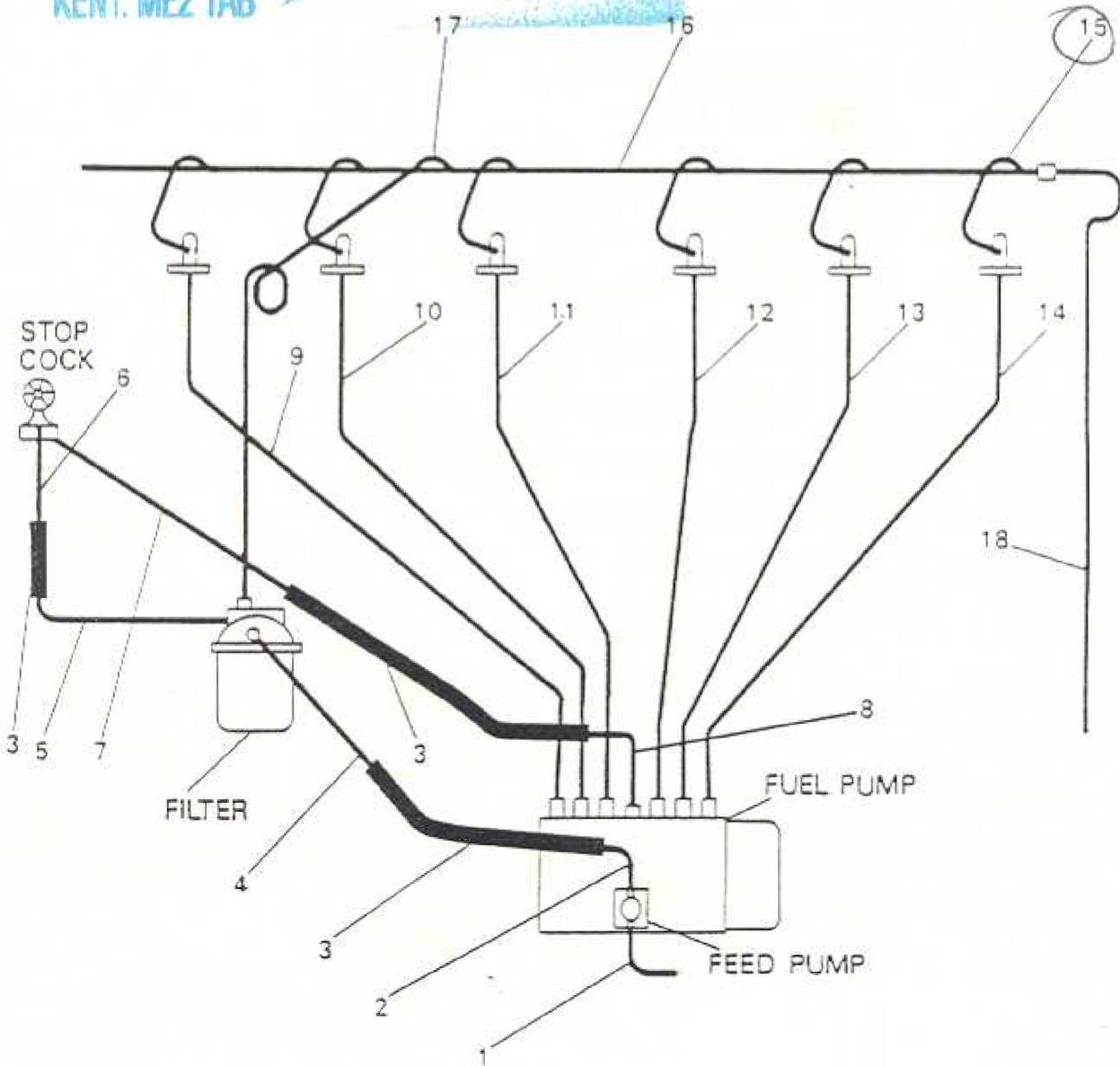


*Orref
668302*

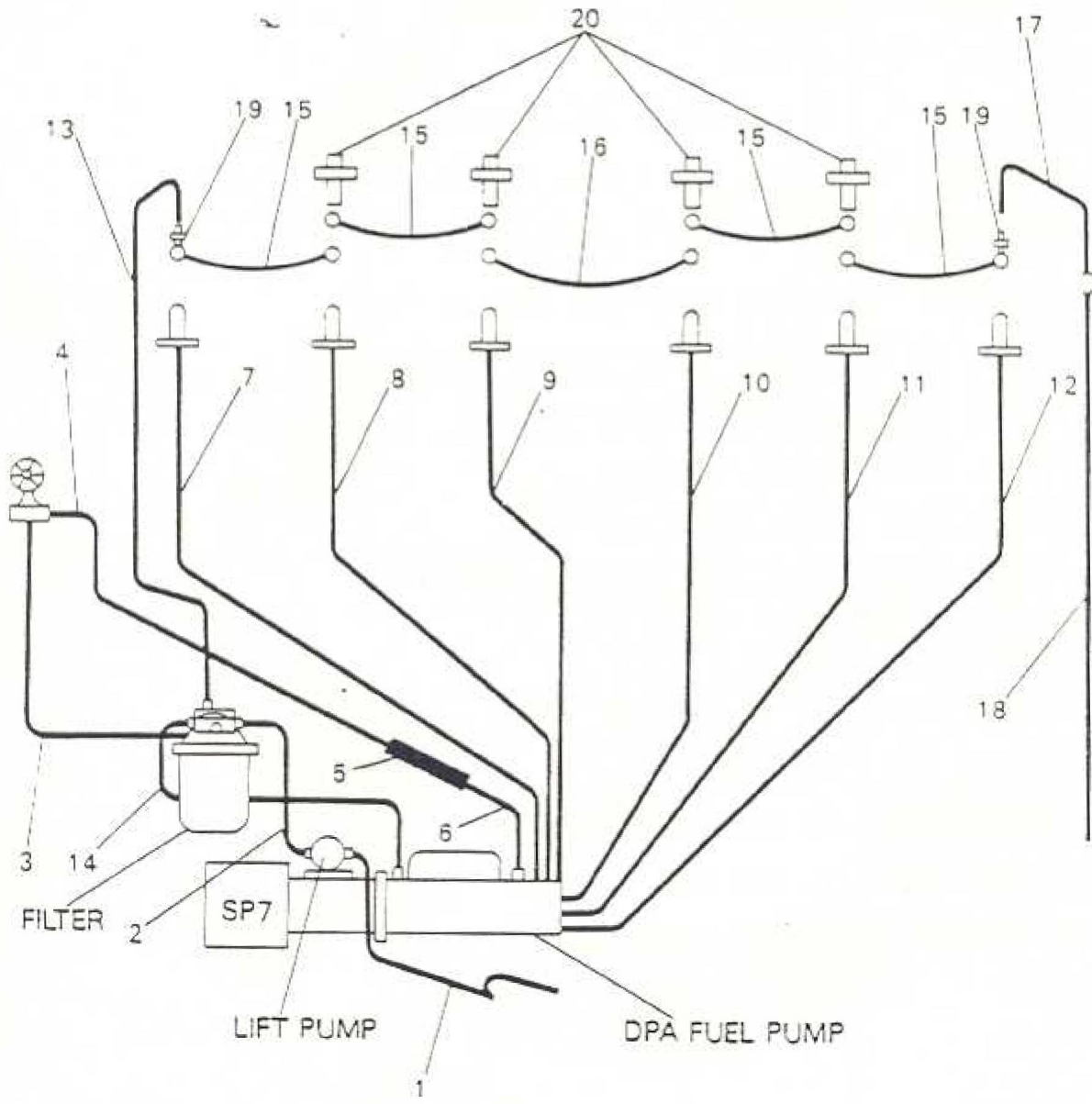
ITEM	MAN. REF.	PART NUMBER	ASSEMBLY = A	DETAIL = D	QTY.	REMARKS	ISSUE
			A/D	DESCRIPTION			
	AEC	148-18	D	Setscrew	1		
		21161-115	D	Nut	1		
	AEC	S14-603	D	Lifting Handle	1		
		3080Z-112	D	Spring	2	Use up Z2/45477	
	AEC	Z47095	D	Pin	1		
	AEC	Z47076	D	Pin-Pivot for Cap	1		
		100-10	D	Split Pin	2		
	AEC	Z2/30652	D	Washer	2		
	AEC	Z4/30686	D	Washer	2		
25		21386-001	D	Setscrew - Flange to Tank	1		
		131-91	D	Adaptor - Feed Pipe	1		
		23131-142	D	Washer - Adaptor	1		
26		131-112	D	Adaptor - Return Pipe	1		
		23131-346	D	Washer - Adaptor	1		
		341-1537	D	Unit Plate	1		
27	AEC	S10516	D	Seating - Filler Tube	1		
	AEC	S10507	D	Filler Cap Flange	1		
		124-402	D	Stud - Flanges	23		
		21661-001	D	Nut - Flanges	23		
		21137-565	D	Washer - (Shakeproof)	15	Use up 21137-510	
		21137-158	D	Washer	8		
	AEC	Z43990	D	Joint - Flanges	3		

PSV PARTSMaster (UK) LTD.
UNIT A1, CUXTON INDUSTRIAL ESTATE,
STATION ROAD,
CUXTON,
KENT. ME2 1AB

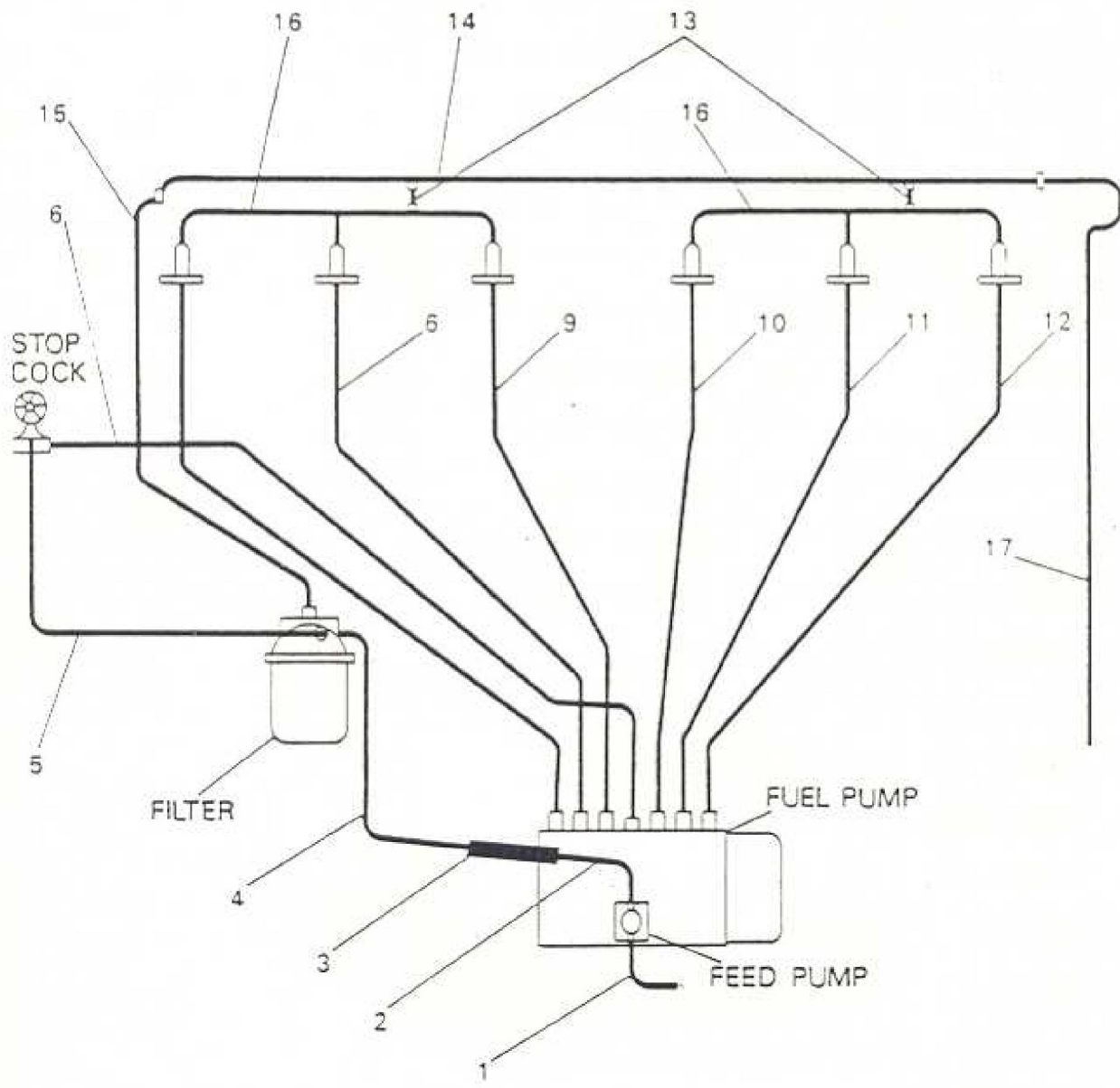
01634 296973
Attention John
From John



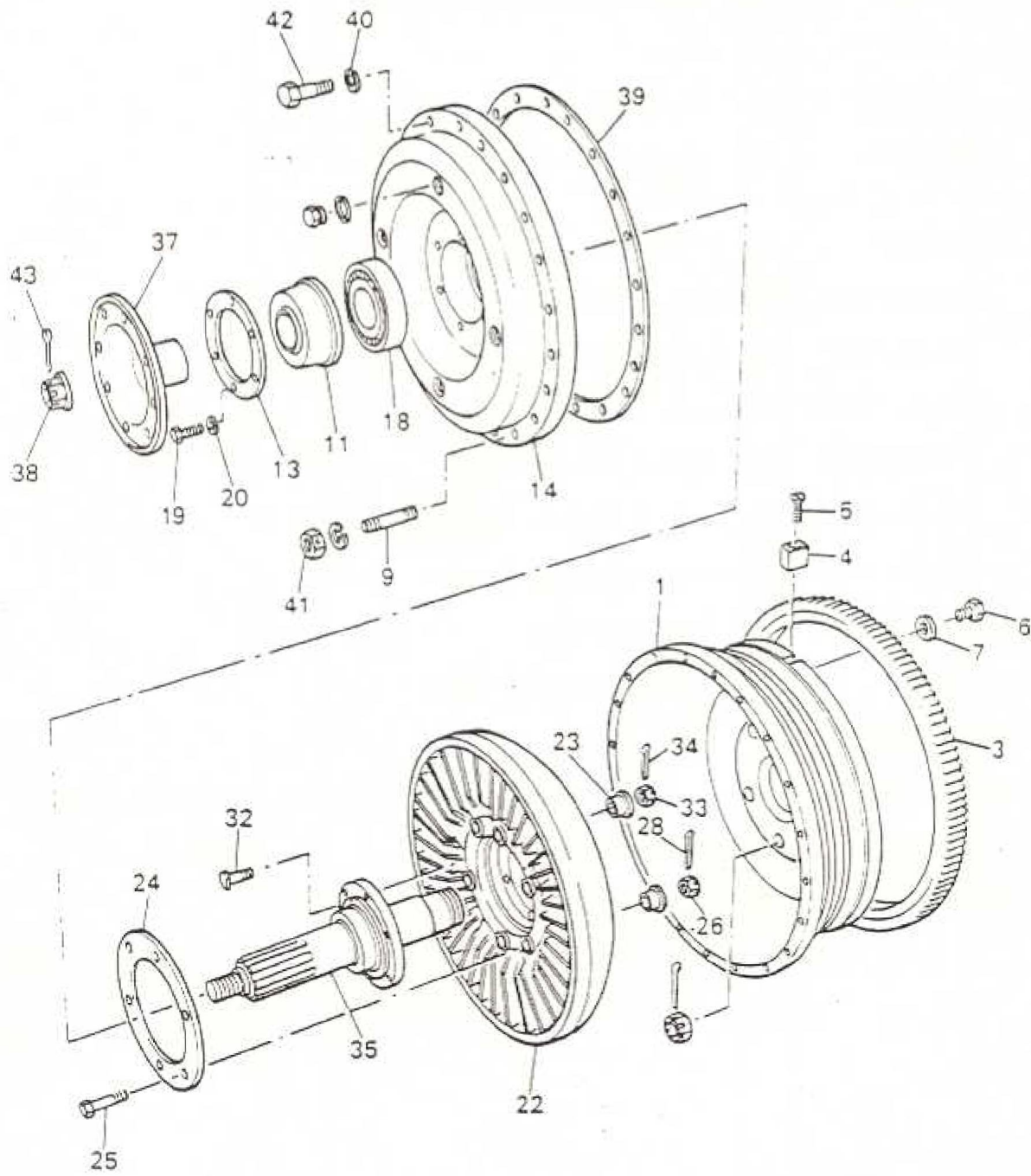
ITEM	MAN. REF.	PART NUMBER	A/D	ASSEMBLY - A	DETAIL - D	QTY.	REMARKS	ISSUE
				DESCRIPTION				
	AEC	EN45 or EN54		Fuel equipment with In-line Fuel Pump (FP72 or FP73)				
1	AEC	S26/0303	D	Fuel Pump Inlet		1		
2	AEC	S26/0303	D	Fuel Pipe - Pump to Hose		1		
3	AEC	310/91	D	Hose		3		
4	AEC	S26/0381	D	Fuel Pipe - Hose to Filter		1		
5	AEC	S26/0385	D	Fuel Pipe - Filter to Hose		1		
6	AEC	3075S 280	D	Fuel Pipe - Hose to Stop Cock		1		
7	AEC	S26/0382	D	Fuel Pipe - Stop Cock to Hose		1		
8	AEC	3075S 280	D	Fuel Pipe - Hose to Fuel Pipe		1		
9		3060A 1201	D	No. 1 Injector Pipe		1		
10		3060A 1202	D	No. 2 Injector Pipe		1		
11		3060A 1203	D	No. 3 Injector Pipe		1		
12		3060A 1204	D	No. 4 Injector Pipe		1		
13		3060A 1205	D	No. 5 Injector Pipe		1		
14		3060A 1206	D	No. 6 Injector Pipe		1		
15		3060A 1628	D	Dribble Pipe		6		
16		3060A 1321	D	Gallery Overflow Pipe		1		
17		3060A 1291	D	Vent Pipe		1		
18	AEC	S26/0384	D	Fuel Return Pipe		1		



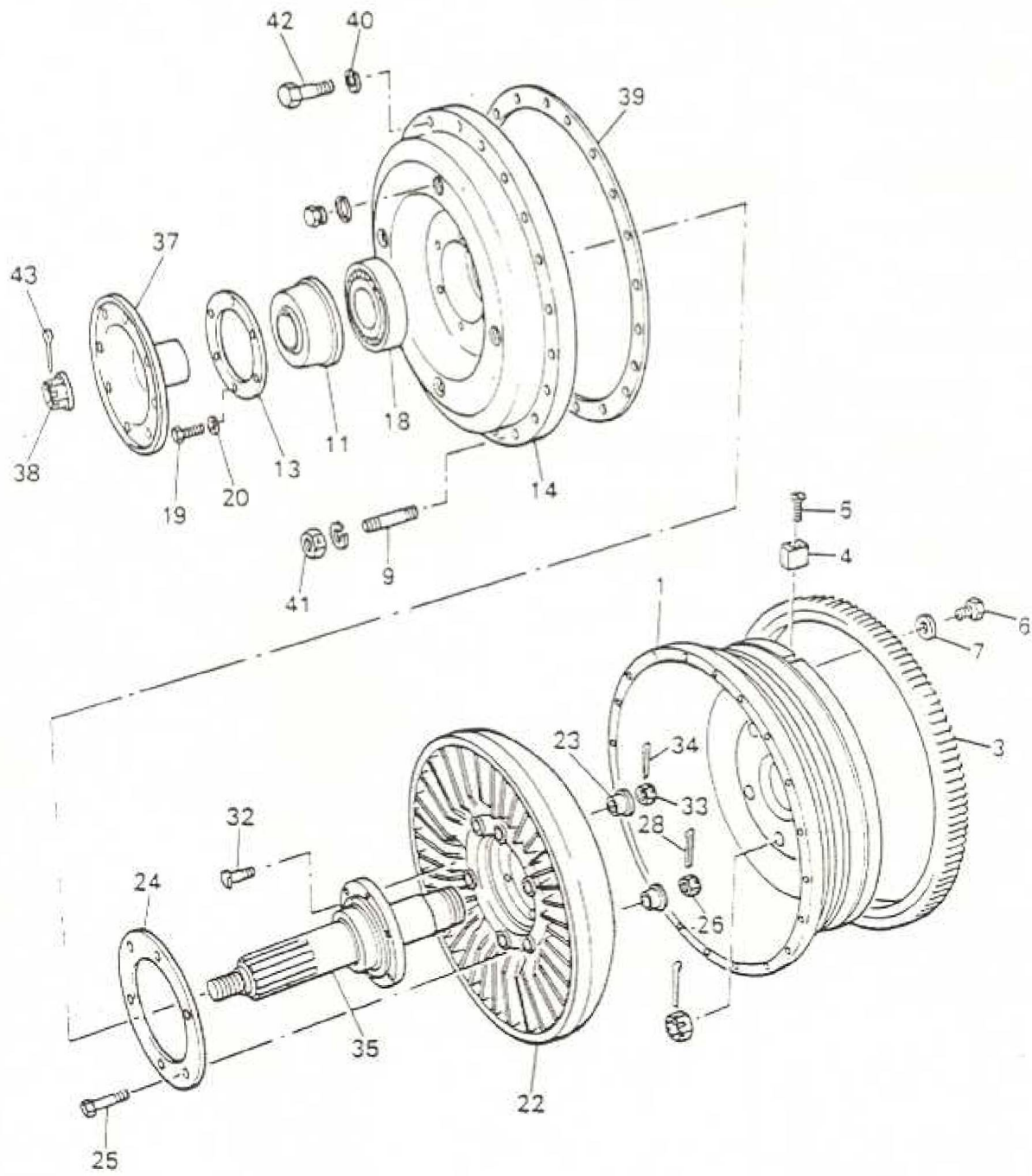
ITEM	MAN. REF.	PART NUMBER	A/D	ASSEMBLY - A	DETAIL - D	QTY.	REMARKS	ISSUE
				DESCRIPTION				
	AEC	EN62		Fuel Equipment with D.P.A. Fuel Pump				
1		3060A 1629	D	Fuel Pipe - Lift Pump Inlet		1		
2		3060A 1459	D	Fuel Pipe - Lift Pump to Filter		1		
3		3060A 1462	D	Fuel Pipe - Filter to Tap		1		
4		3060A 1607	D	Fuel Pipe - Shut Off Tap to Hose		1		
5		310-314	D	Hose		1		
6		3060A 1608	D	Fuel Pipe - Hose to Pump		1		
7	AEC	A16/2256	D	No. 1 Injector Pipe		1		
8	AEC	A16/2257	D	No. 2 Injector Pipe		1		
9	AEC	A16/2258	D	No. 3 Injector Pipe		1		
10	AEC	A16/2259	D	No. 4 Injector Pipe		1		
11	AEC	A16/2260	D	No. 5 Injector Pipe		1		
12	AEC	A16/2261	D	No. 6 Injector Pipe		1		
13		3060A 2127	D	Bleed Pipe		1		
14		3060A 1460	D	Filter Drain Pipe		1		
15		3060A 2019	D	Leak-Off Pipe		4		
16		3060A 2020	D	Leak-Off Pipe		1		
17		3060A 2128	D	Leak-Off Pipe		1		
18	AEC	S31/3075	D	Fuel Pipe - Return to Tanks		1		
19	AEC	S3/13340	D	Adaptor (No. 1 & 6 Injector)		2		
20	AEC	560/4295	D	Double Banjo Pin		4		
*		23131-094	D	Washer - For Adaptor & Banjo		12		



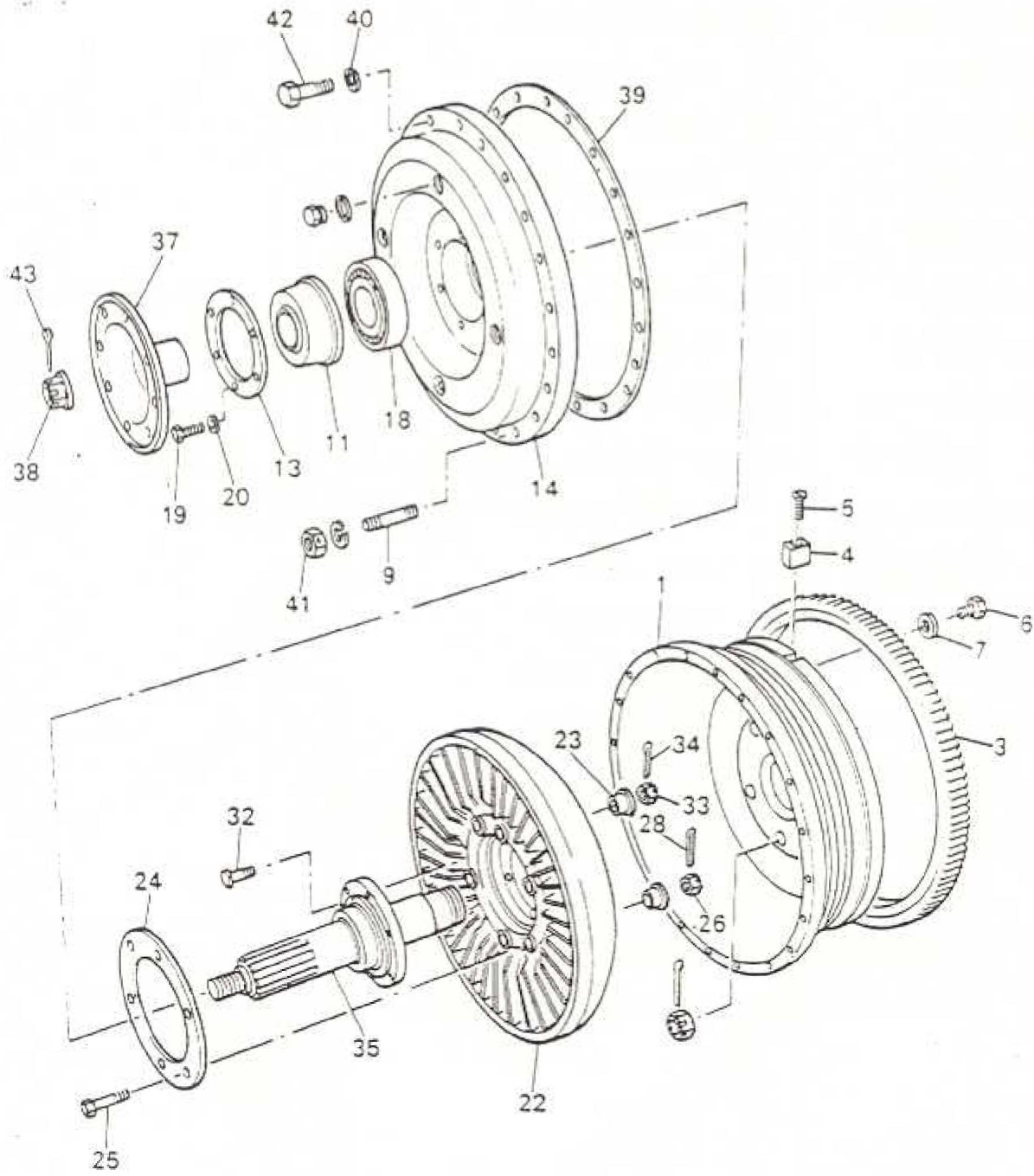
ITEM	MAN. REF.	PART NUMBER	A/D	ASSEMBLY - A	DETAIL - D	QTY.	REMARKS	ISSI
				DESCRIPTION				
				Fuel Equipment with In-Line Pump (FP72 or 73)				
1	AEC	S26/0303	D	Fuel Pump Inlet Pipe		1		
2	LML	605107	D	Fuel Pipe - Pump to Hose		1		
3	LML	605995	D	Hose		1		
4	LML	605338	D	Fuel Pipe - Hose to Filter		1		
5	LML	602854	D	Fuel Pipe - Filter to Stop Cock		1		
6	LM6	602855	D	Fuel Pipe - Cock to Pump		1		
7		3040A 1022	D	No. 1 Injector Pipe		1		
8		3040A 1023	D	No. 2 Injector Pipe		1		
9		3040A 1024	D	No. 3 Injector Pipe		1		
10		3040A 1025	D	No. 4 injector Pipe		1		
11		3040A 1026	D	No. 5 Injector Pipe		1		
12		3040A 1027	D	No. 6 Injector Pipe		1		
13	LML	235108 B	D	Leak-off Pipe		2		
14	LML	260057	D	Leak-off Gallery Pipe		1		
15	LML	602876	D	Vent Pipe		1		
16	LML	232432 E	D	Leak-off Pipe		2	Alt. Fits under	
16	LML	10622131	D	Leak-off Pipe		2	Valve Cover	
17	AEC	S26/0384	D	Fuel Return Pipe		1		
	LML	604012	D	DOUBLE END ?				



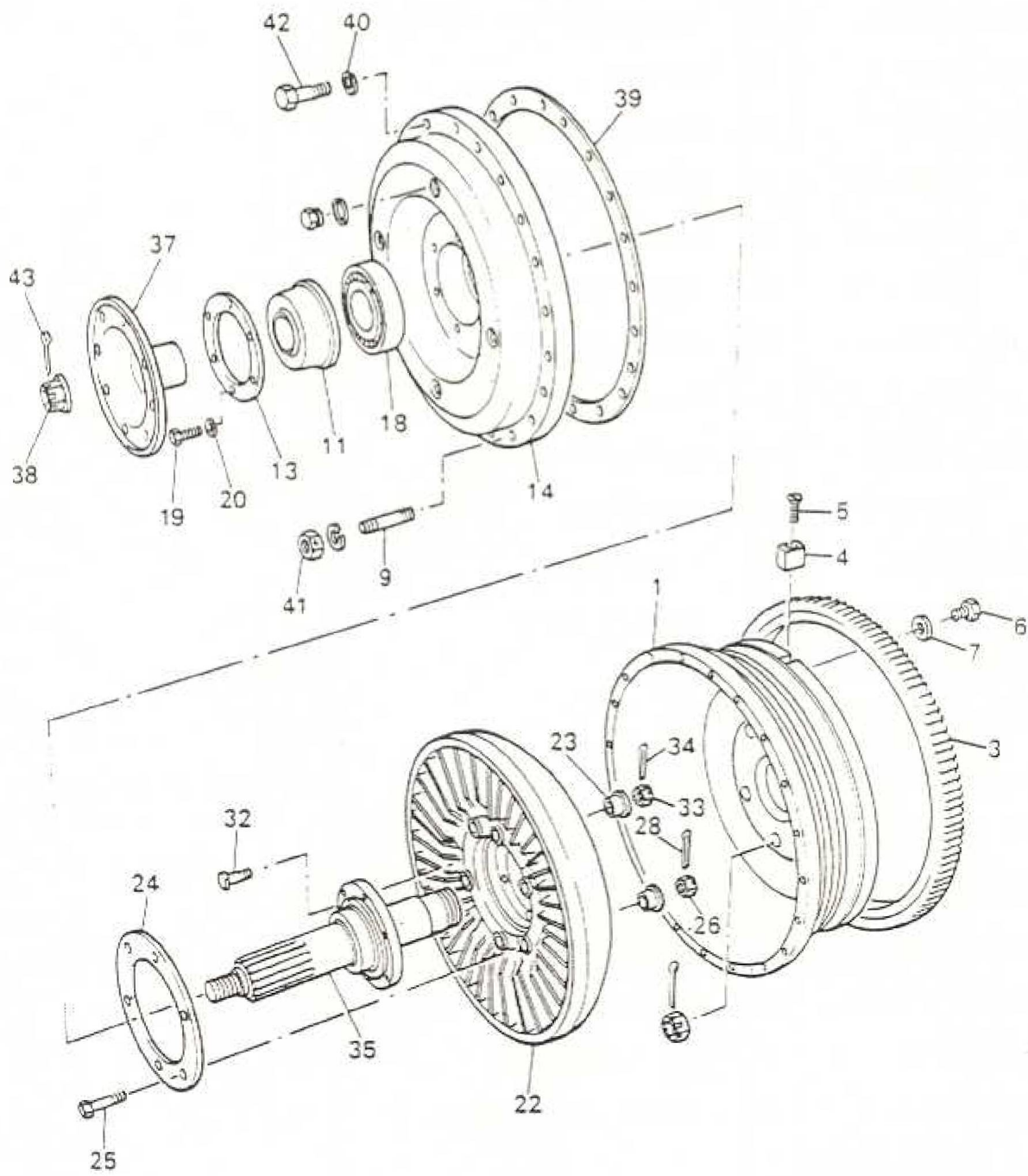
ITEM	MAN. REF.	PART NUMBER	A/D	ASSEMBLY = A	DETAIL = D	QTY.	REMARKS	ISSUE
				DESCRIPTION				
		FF13	A	Fluid Flywheel, AEC Engine		1		
*	AEC	J0139	A	Front Casing		1		
2	AEC	J25415	D	Front Casing		1		
3	AEC	A72327	D	Starter Ring		1	Use up A78319	
4	AEC	J24107	D	Key - Starter Ring		1		
5	AEC	117-75	D	Screw - Key		1		
6	AEC	Z3/43705	D	Screw - Starter Ring		10		
7	AEC	Z5/30634	D	Washer - Starter Ring		10		
*	AEC	219-21	D	Locking Wire - Screw		A/R		
9	AEC	124-157	D	Stud - Casing		4		
*		3067J70	A	Rear Casing		1		
11		3067J71	A	Llewellyn Gland & Housing		1		
*	LLE	F52H/H	D	LLEwellyn Gland & Housing		1		
13	AEC	J14903	D	Clamp Ring		1		
14	AEC	J10120	D	Rear Casing		1		
15	AEC	103-63	D	Plug		3	Shallow head	
16		23131-149	D	Washer - Plug		4		
*	AEC	3067J-84	D	Plug		1	Fuseable	
18		26141-766	D	Bearing		1		
19		21422-040	D	Setscrew - Housing		6		
20		21137-016	D	Washer		6		
*	AEC	Z44981	D	Gland Joint		1		



ITEM	MAN. REF.	PART NUMBER	A/D	ASSEMBLY - A	DETAIL - D	QTY.	REMARKS	ISSUE
				DESCRIPTION				
22		3067J12	A	Runner		1		
23	AEC	Z10120	D	Bush		6		
24	AEC	J27903	D	Oil Deflector		1	Use up AEC J27902	
25	AEC	Z13/30770	D	Bolt - Deflector		6		
26	AEC	86-33	D	Nut - Deflector		6		
*	AEC	134-3	D	Washer - Deflector		6		
28	AEC	100-4	D	Split Pin - Deflector		6		
	AEC	J4302	A	Runner		1		
	AEC	J25507	D	Runner		1	Use up J25506	
	AEC	103-62	D	Balancing Plug		A/R		
32	AEC	Z3/30792	D	Bolt - Runner		6		
33		21621-143	D	Nut - Runner		6		
34	AEC	21122-031	D	Split Pin - Runner		6		
35		3067J69	A	Runner shaft		1		
*	AEC	J14521	D	Runner shaft		1		
37	AEC	K22964	D	Coupling flange		1		
38	AEC	Z2/31953	D	Nut - Flange		1		
39	AEC	J25603	D	Joint - Casing		1		
40	AEC	21137-018	D	Washer - Casing		20		
41		21621-103	D	Nut - Casing		4		
42		21422-086	D	Setscrew - Casing		16		
43		21122-075	D	Split Pin - Flange Unit		1		

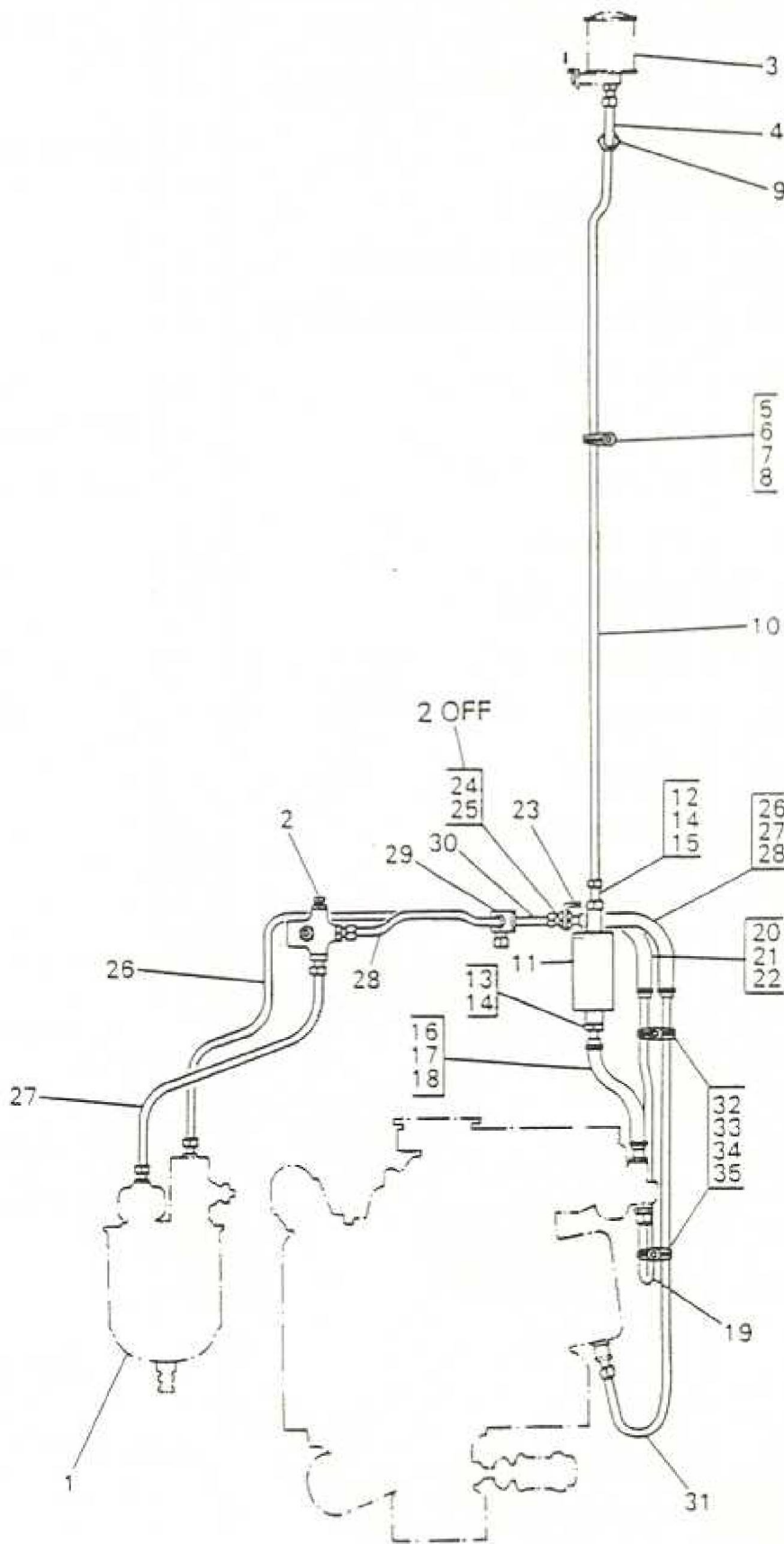


ITEM	MAN. REF.	PART NUMBER	A/D	ASSEMBLY * A	DETAIL * D	QTY.	REMARKS	ISSUE
				DESCRIPTION				
		FF14	A	Fluid Flywheel, Leyland Engine		1		
*		602806	A	Front Casing		1		
2		3040J12	A	Front Casing		1		
*	LML	603439B	D	Housing Flywheel Casing		1		
*	LML	246121D	D	Housing		1		
*	LML	232657	D	Setscrew - Housing		3		
*		21137-511	D	Washer - Setscrew		3		
*		11412-128	D	Lockwire		A/R		
9		21222-219	D	Stud - Casing		4		
3	LML	314904	D	Starter Ring		1		
6	LML	243477	D	Bolt - Starter - Ring		12		
*	LML	257686B	D	Locking Plate - Bolt		12		
35		3067J26	A	Runner Shaft		1		
*	AEC	J14521	D	Runner Shaft		1		
37	AEC	K22964	D	Coupling Flange		1		
*	AEC	K11811	D	Sleeve		1		
38	AEC	Z2/31923	D	Nut		1		
*	AEC	Z5/30633	D	Washer		1	Use up ZA/30661	
22		3067J12	A	Runner		1		
23	AEC	Z10120	D	Bush		6		
24	AEC	J27905	D	Oil Deflector		1	Use up J27902	
25	AEC	Z13/30770	D	Bolt - Deflector		6		
26	AEC	86-33	D	Nut - Deflector		6		
*	AEC	134-3	D	Washer - Deflector		6		

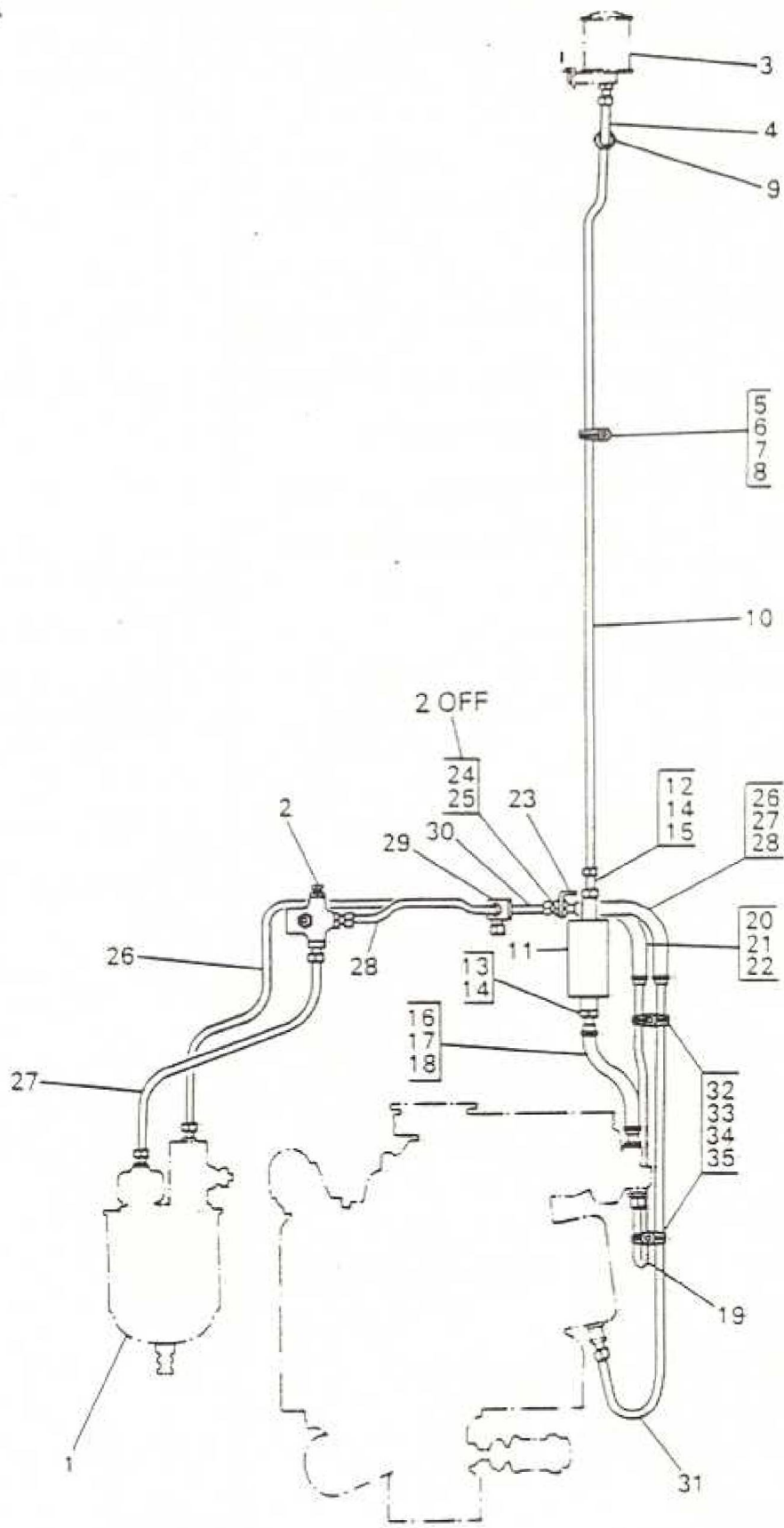


ITEM	MAN. REF.	PART NUMBER	A/D	ASSEMBLY = A	DETAIL = D	QTY.	REMARKS	ISSUE
				DESCRIPTION				
28	AEC	100-4	D	Split Pin - Deflector		6		
*	AEC	J4302	A	Runner		1		
*	AEC	J25507	D	Runner		1	Use up J25506	
*	AEC	103-62	D	Balancing Plug		A/R		
32	AEC	Z3-30792	D	Bolt - Runner		6		
33		21621-143	D	Nut		6		
34		21122-031	D	Split Pin		6		
14		3067J-70	A	Rear Casing		1		
11	LLE	3067J-71	A	Llewellyn Gland & Housing		1		
*		F52H/H	D	Llewellyn Gland & Housing		1		
13	AEC	J14903	D	Clamp Ring		1		
14	AEC	J10120	D	Rear Casing		1		
15	AEC	103-63	D	Plug		3	Shallow Head	
16		23131-149	D	Washer - Plug		4		
*		3067J-84	D	Plug		1	Fuseable	
18		26141-766	D	Bearing		1		
19		21422-040	D	Setscrew - Housing		6		
20		21137-016	D	Washer - Housing		6		
*	AEC	Z44981	D	Gland Joint		1		
41		21621-103	D	Nut - Casing		4		
*	LML	X75962	D	Washer - Casing		4		
39	AEC	J25603	D	Joint - Casing		1		
*		21122-075	D	Split Pin - Coupling Flange		1		
*		3060A1662	D	Joint - Crankshaft to Flywheel		1		
*	AEC	Z3/31911	D	Nut - Flywheel Bolt		6	DEC code 21626-087	

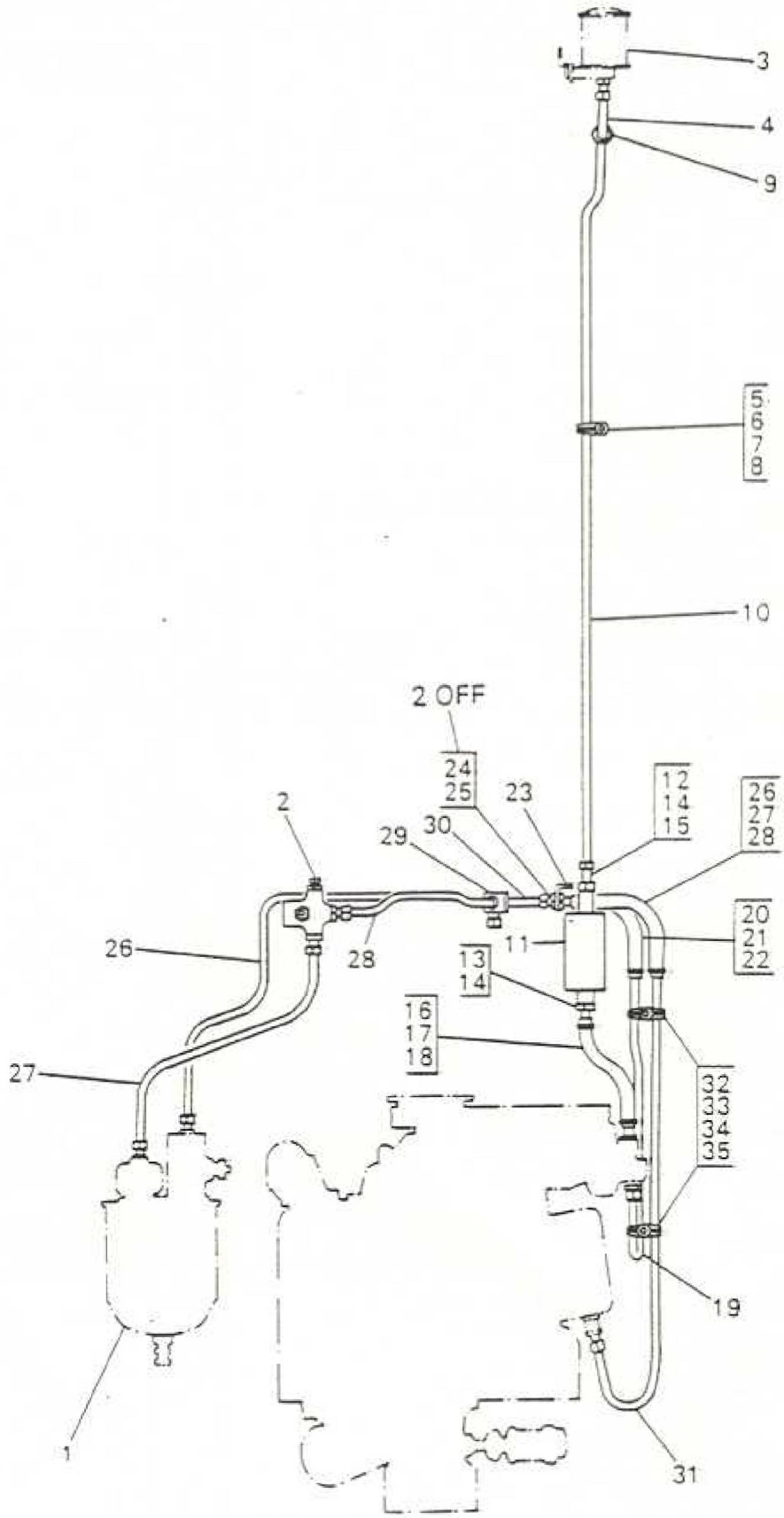
ITEM	MAN. REF.	PART NUMBER	ASSEMBLY * A		DETAIL * D		QTY.	REMARKS	ISSUE
			A/D	DESCRIPTION					
1		CA/AR 10	A	Air Reservoir - CLD			1		
2		3065G1628	A	Air Pressure Warning Switch			1		
		21668-134	D	Nut			1	Use up 21666-566	
		21131-333	D	Washer			1		
3		3065G-1626	A	Air Filter - Compressor			1		
4		3062D-456	A	Pipe - Air Filter to Adaptor			1		
*	AEC	Z26-40496	D	Pipe			1		
*	WCL	10335	D	Olive			2	AEC 5066-2	
*	WCL	10135	D	Nut			2	AEC 5066-1	
		3085-723	D	Label			1		
5	AEC	Z5-31384	D	Clip - Pipe			2		
6		21461-359	D	Bolt - Clip			1		
7		21668-132	D	Nut			1		
8		21131-327	D	Washer			1		
9	WCL	1053/S/BULK	D	Adaptor Floor			1		
*		23215-925	D	Nut - Adaptor			1		
*		21131-316	D	Washer			1		
10		3062D-457	A	Pipe - Adaptor to Ad. No. 2 Cross Bar			1		
*	AEC	Z26-40497	D	Pipe			1		
*	WCL	10335	D	Olive			2	AEC 5066-2	
*	WCL	10135	D	Nut			2	AEC 5066-1	
		3085-724	D	Label			1		
11		3062D-466	A	Air Silencer			1		
*		81-1561	D	Silencer			1		



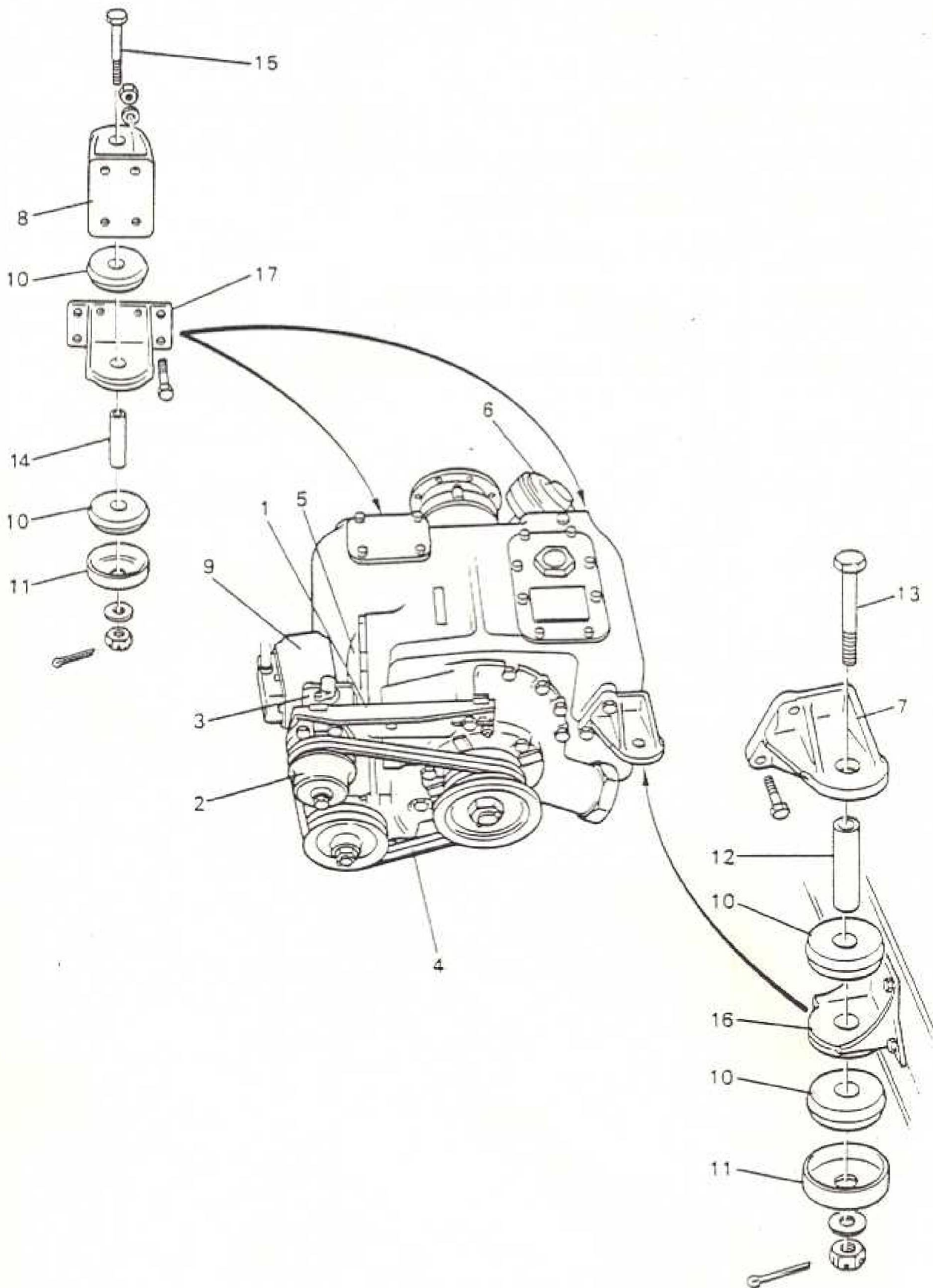
ITEM	MAN. REF.	PART NUMBER	A/D	ASSEMBLY - A	DETAIL - D	QTY.	REMARKS	ISSUE
				DESCRIPTION				
12	AEC	G1-25182	D	Adaptor - Inlet		1		
13	AEC	G1-25142	D	Adaptor		1		
14		23131-144	D	Washer		2		
*		21131-361	D	Washer - Silencer Adaptor		2		
15		23215-925	D	Locknut		1		
16		3065G 1715	D	Hose - Silencer to Compressor		1	Not CA-CD 3	
17		310-123	D	Hose - Silencer to Compressor		1	CA-CD 3 Only	
18		23712-407	D	Clip - Hose - Jubilee		2		
19		3062D549	A	Pipe - Compressor to Hose		1		
*		3062D550	D	Pipe (Swaged - Hose End)		1	Made from Brisck 11721-118	
*		23443-146	D	Olive		1	Use up WCL 1031	
*		23443-882	D	Nut		1	Re-bin WCL EXT1011S	
*		3085-1129	D	Label		1		
*		30656-1849	D	Hose - Clip to Adaptor		1	Not CA-CD3	
*		332-187	D	Hose - Clip to Adaptor		1	CA-CD3 Only	
*		23712-407	D	Clip - Hose - Jubilee		1		
23	AEC	Y32789	D	Bracket - Adaptor		1		
*		21366-386	D	Bolt - Bracket		2		
*		21668-132	D	Nut		2		
24	AEC	G1-25174	D	Adaptor		1		
25		23218-631	D	Locknut		1		
26		3062D-459	A	Pipe - Adaptor to Unloader Valve		1		
*	AEC	Z26-40498	D	Pipe		1		



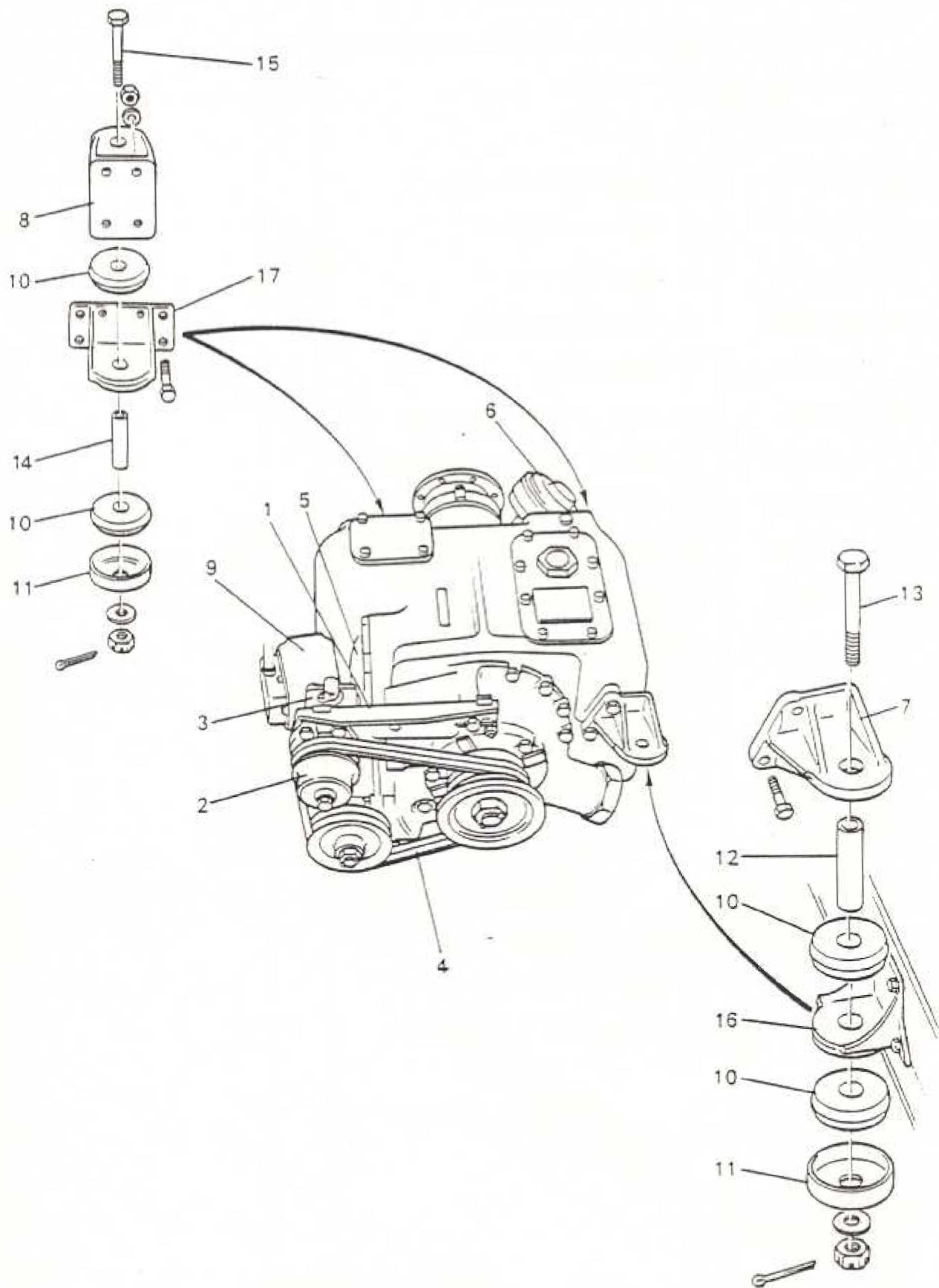
ITEM	MAN. REF.	PART NUMBER	A/D	ASSEMBLY - A	DETAIL - D	QTY.	REMARKS	ISSUE
				DESCRIPTION				
*		23443-149	D	Olive		2	Re-bin WCL 1031	
*		23443-882	D	Nut		2	Re-bin WCL EXT10115	
*		3085-726	D	Label		1		
27		3062D460	A	Pipe - Reducer Valve to Press. Switch		1		
*	AEC	Z26-40499	D	Pipe		1		
*		23443-146	D	Olive		2	Re-bin WCL 1031	
*		23443-882	D	Nut		2	Re-bin WCL 10115	
*		3085-727	D	Label		1		
28		3062D-461	A	Pipe - Pressure Switch to Test Piece		1		
*	AEC	Z27-40400	D	Pipe		1		
*		23443-146	D	Olive		2	Re-bin WCL 1031	
*		23443-882	D	Nut		2	Re-bin WCL 10115	
*		3085-728	D	Label		1		
29	CLD	APSA 1712	A	Test Tee Piece		1		
*	CLD	SF482C-13	D	Tee Piece		1		
*	CLD	AP4391	D	Blanking Washer		1		
*	CLD	AP4390	D	Blank Nut		1		
30		3062D462	A	Pipe - Test Tee Piece to Adaptor		1		
*	AEC	Z27-40401	D	Pipe		1		
*		23443-146	D	Olive		2	Re-bin WCL 1031	
*		23443-882	D	Nut		2	Re-bin WCL EXT10115	
*		3085-729	D	Label		1		



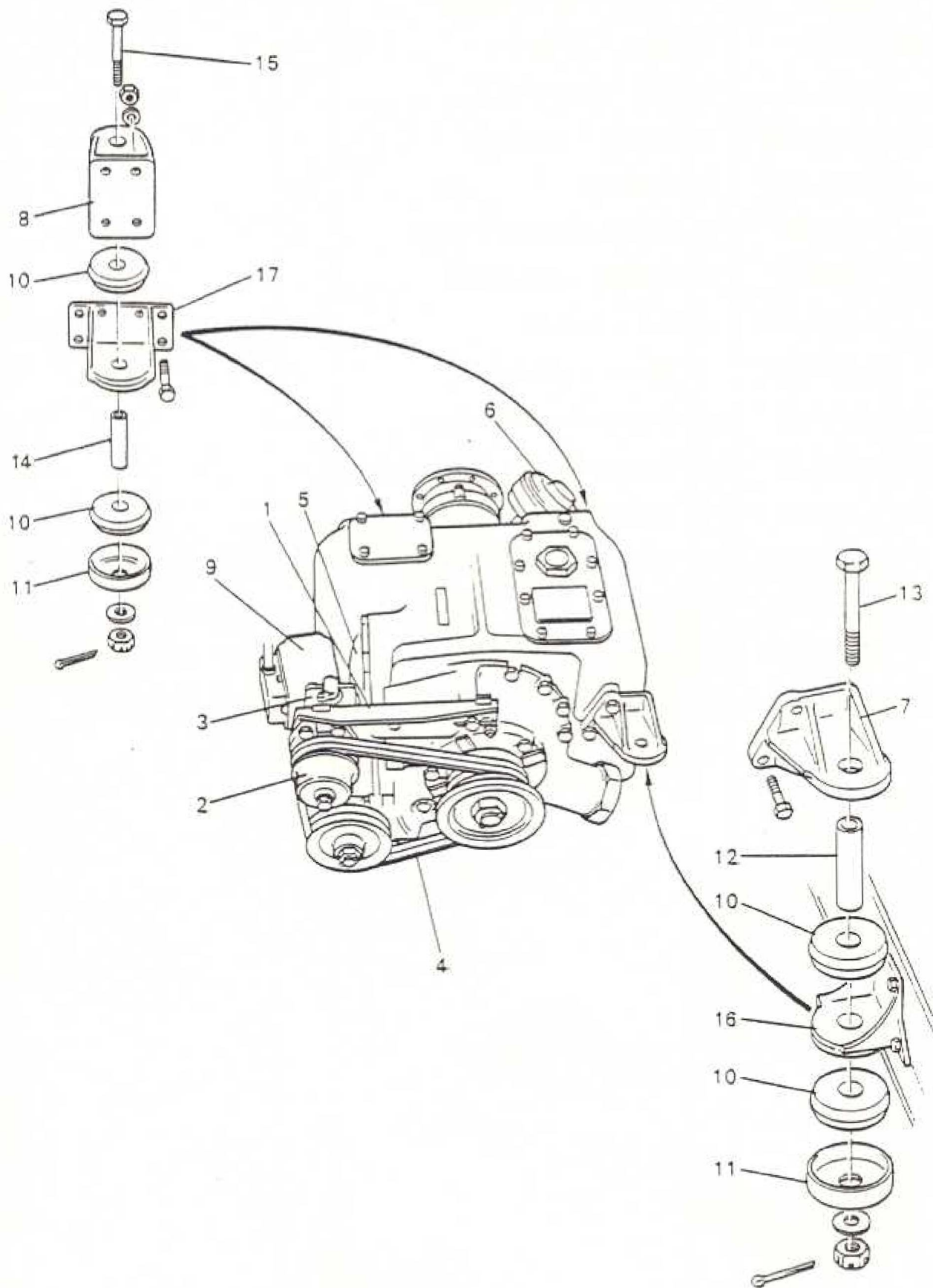
ITEM	MAN. REF.	PART NUMBER	A/D	ASSEMBLY - A	DETAIL - D	QTY.	REMARKS	ISSUE
				DESCRIPTION				
24	AEC	G1-25174	D	Adaptor		1		
25		23218-631	D	Locknut		1	Not CA-CD3	
*		21641-127	D	Locknut		1	CA-CD3 Only	
26		3065G-1849	D	Hose - Adaptor to Pipe		1	Not CA-CD3	
27		23712-407	D	Clip - Hose - Jubilee		2		
28		332-187	D	Hose - Adaptor to Pipe		1	CA-CD3 Only	
31		3062D-547	A	Pipe - Hose to E.P. Valves G.Box		1	Change, after ADVGB1021	
*		3062D 551	D	Pipe (Swaged - Hose End)		1	Made from Brisch 11721-118	
*		23443-146	D	Olive		1	Use up WCL 1031	
*		23443-882	D	Nut		1	Re-bin WCL EXT10115	
*		3105-353	D	Pipe Label		1		
32	AEC	Z6-31373	D	Clip - Pipe		4		
33		21461-354	D	Bolt - Clip		2	Not CA-CD3	
34		21668-132	D	Nut		2		
35		21461-359	D	Bolt Clip		2	CA-CD3 Only	



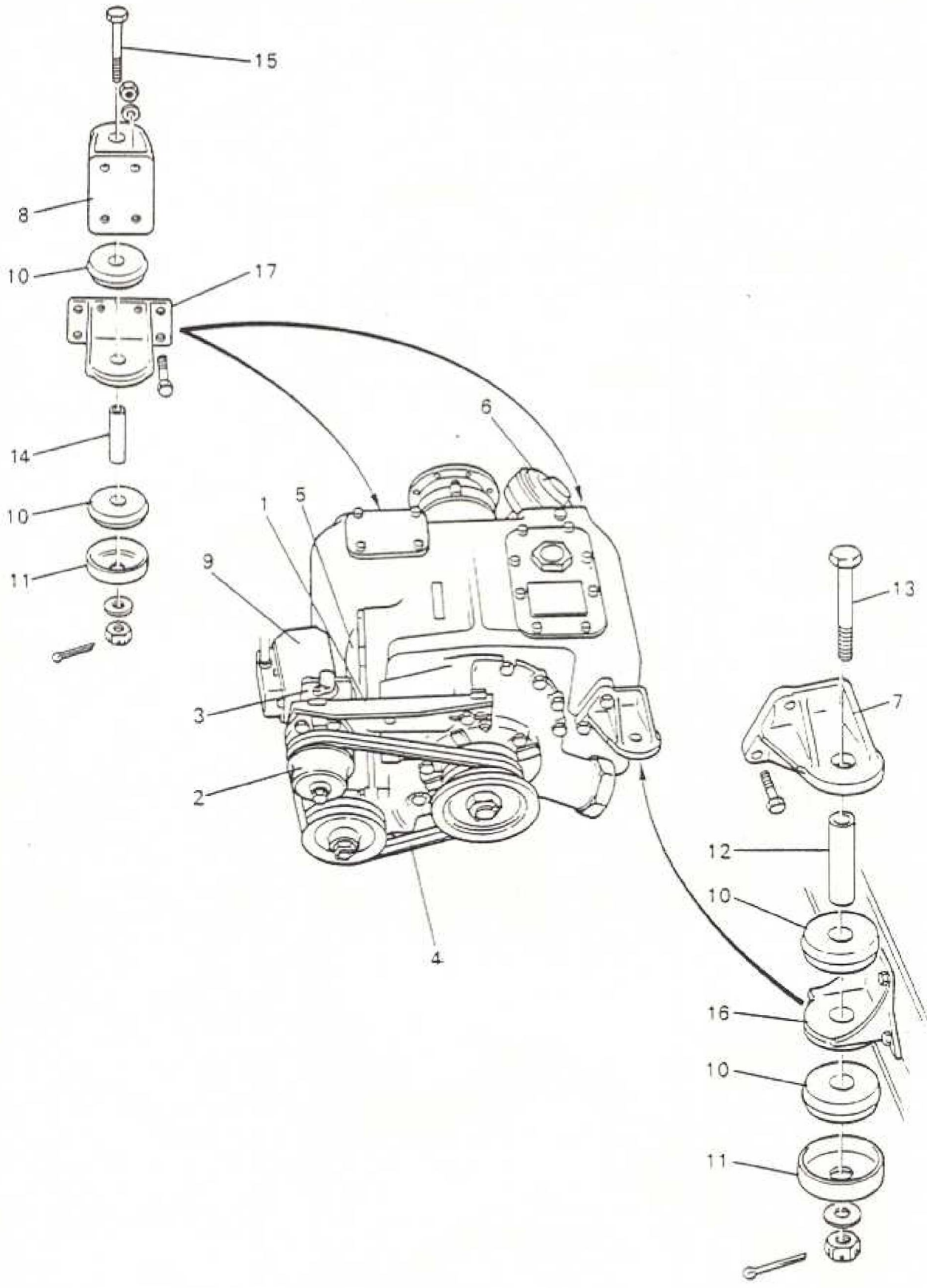
ITEM	MAN. REF.	PART NUMBER	ASSEMBLY - A DETAIL - D		QTY.	REMARKS	ISSUE
			A/D	DESCRIPTION			
		GB32	A	GEARBOX UNIT	1		
1		3062D.465	A	Bracket & Studs - Brake Pump	1		
*	AEC	D1/20022	D	Bracket	1		
*		21222-121	D	Studs	6		
*	AEC	Z7/30613	D	Washer - Bracket	3		
*		21137-019	D	Washer - Bracket	3		
*		21621-104	D	Nut - Bracket	3		
2	AEC	DB.0102	A	Brake Pump Drive	1		
3		CA/HP.1	A	Brake Pump	1	PLE CV26929	
*	AEC	D11283	D	Joint - Pump to Bracket	1		
*		21137-016	D	Washer - Pump to Bracket	6		
*		21621-102	D	Nut - Pump to Bracket	6		
*		21422-509	D	Bolt - Pump to Bracket	2	AEC 39-36	
*		21422-006	D	Bolt - Pump to Bracket	2	AEC 39-4	
*		21621-101	D	Nut - Pump to Bracket	4	AEC 85-32	
*		21137-014	D	Washer - Pump to Bracket	4	AEC 135-32	
*	AEC	D42501	D	Muff Coupling - Drive to Pump	1		
*		CA/AC9	A	Air Compressor	1		
*		3001-17		Clayton Dewandre		Alt.	
*		5022-648		Westinghouse		Alt.	
*		21621-103	D	Nut - Compressor	4		
*		21137-018	D	Washer - Compressor	4		
4	AEC	A1/13502	D	Driving Belt - Compressor	2		



ITEM	MAN. REF.	PART NUMBER	ASSEMBLY = A DETAIL = D		QTY.	REMARKS	ISSUE
			A/D	DESCRIPTION			
6	AEC	Dk1401	A	Auto Speed Generator	1		
*	AEC	D10352	D	Joint - Generator	1		
*		21621-103	D	Nut - Generator	4		
*		21137-160	D	Washer - Generator	4		
*		11411-106	D	Lockwire	A/R		
9		3062D276	A	Electro-Pneumatic Valve	1		
5	AEC	D1/20019	D	Bracket - E.P. Valve	1		
*		21621-105	D	Nut - Bracket	4		
*		21137-020	D	Washer - Bracket	4		
7	AEC	D1/20017	D	Support Bracket - Front	1		
8	AEC	D1/20015	D	Support Bracket - Rear R.H.	1		
8	AEC	D1/20016	D	Support Bracket - Rear L.H.	1		
*		21621-104	D	Nut - Front Bracket	3	AEC 85-35	
*		21137-019	D	Washer - Front Bracket	3	AEC 135-35	
*		21621-105	D	Nut - Rear Bracket	8	AEC 85-36	
*		21137-020	D	Washer - Rear Bracket	8	AEC 135-36	



ITEM	MAN. REF.	PART NUMBER	A/D	ASSEMBLY = A	DETAIL = D	QTY	REMARKS	ISSUE
				DESCRIPTION				
10	AEC	Z5-30694	D	Rubber - G.Box Mounting Brkt Front		2	23/4 O/D, 11/8 x 11/4	
11	AEC	D39503	D	Cover - Rubber		1	23/4 x 7/8 I/D	
*	AEC	Z5-30695	D	Washer - Cover		2	27/8 O/D, 15/32 I/D x 1/8	
12	AEC	Z8-44828	D	Distance Piece - Mounting Bracket		1		
13	AEC	Z18-30786	D	Bolt - G/Box to Mounting Bracket		1		
*		21661-047	D	Nut		1		
*		21131-355	D	Washer		2		
*		21122-067	D	Split Pin		1		
10	AEC	Z5-30694	D	Rubber - G/Box Mounting Brkt Rear		4		
11	AEC	D39503	D	Cover - Rubber		2		
14	AEC	Z7-44821	D	Distance Piece		2		
15	AEC	Z18-30787	D	Bolt - G/Box to Mounting Brkt.		2		
*		21661-047	D	Nut		2		
*		21131-355	D	Washer		2		
*		21122-067	D	Split Pin		2		
16	AEC	D1-20018	D	Mounting Bracket - G/Box Front		1	Fitted	
*	AEC	Y22725	D	Stiffening Plate - G/Box Front		1	to	
17	AEC	D23111	D	Mounting Brkt - G/Box Rear		2	Body	



E8

GEARBOX UNIT

ITEM	MAN. REF.	PART NUMBER	ASSEMBLY = A DETAIL = D		QTY.	REMARKS
			A/D	DESCRIPTION		
		<u>ATTACHING PARTS - GEARBOX FIXINGS</u>				
*	AEC	SS100-19	D			
*	AEC	SS134-9	D			
*	AEC	SS86-99	D			
*	AEC	Z18/30787	D			
*	AEC	D-23111	D			
*	AEC	Z7-44821	D			
*	AEC	D-39503	D			
	AEC	Z5-30694	D			
* * * *	AEC AEC AEC AEC	FA1801 SS86-96 SS134-6 SS219-25	D D D D			

15515