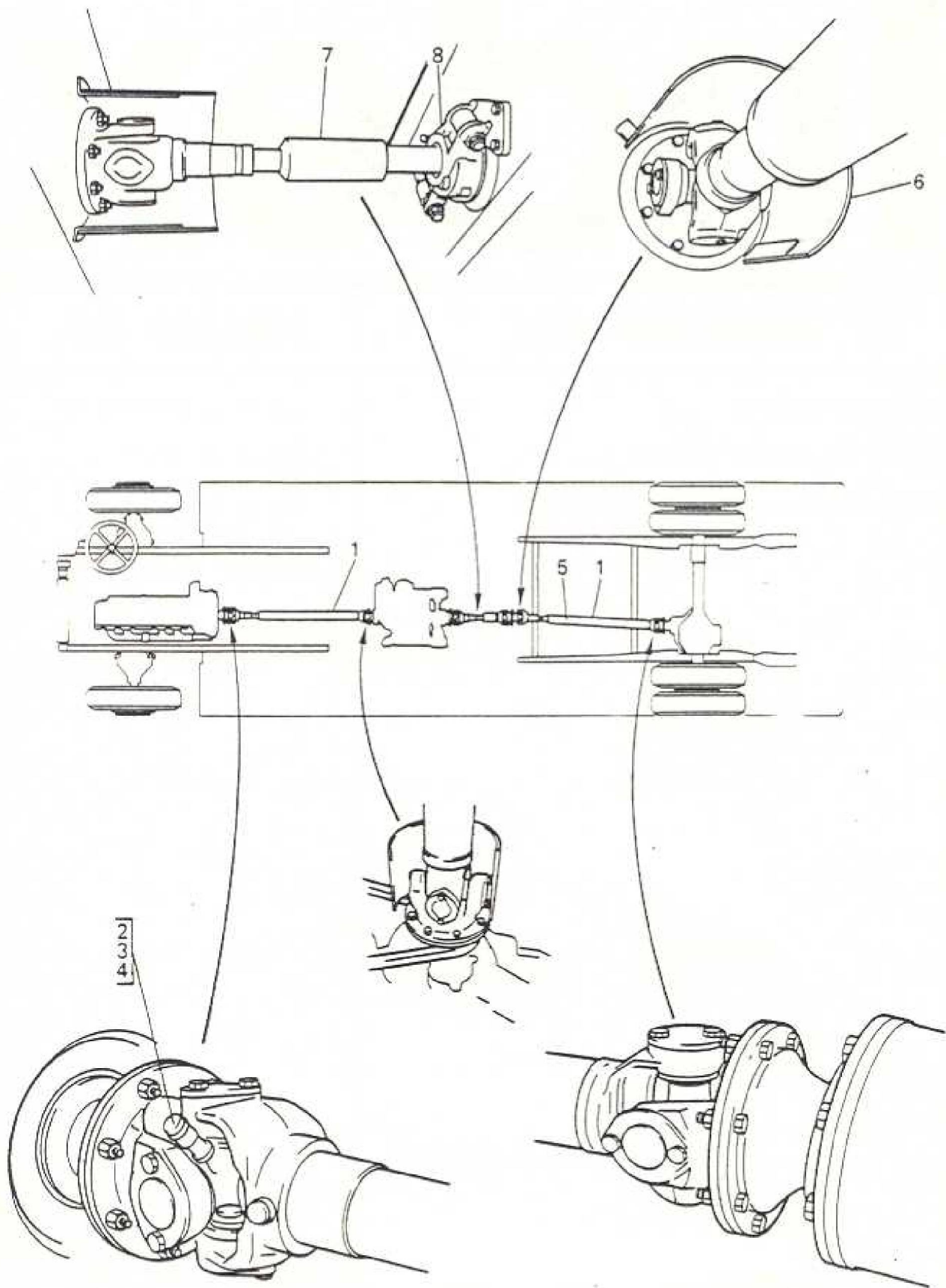


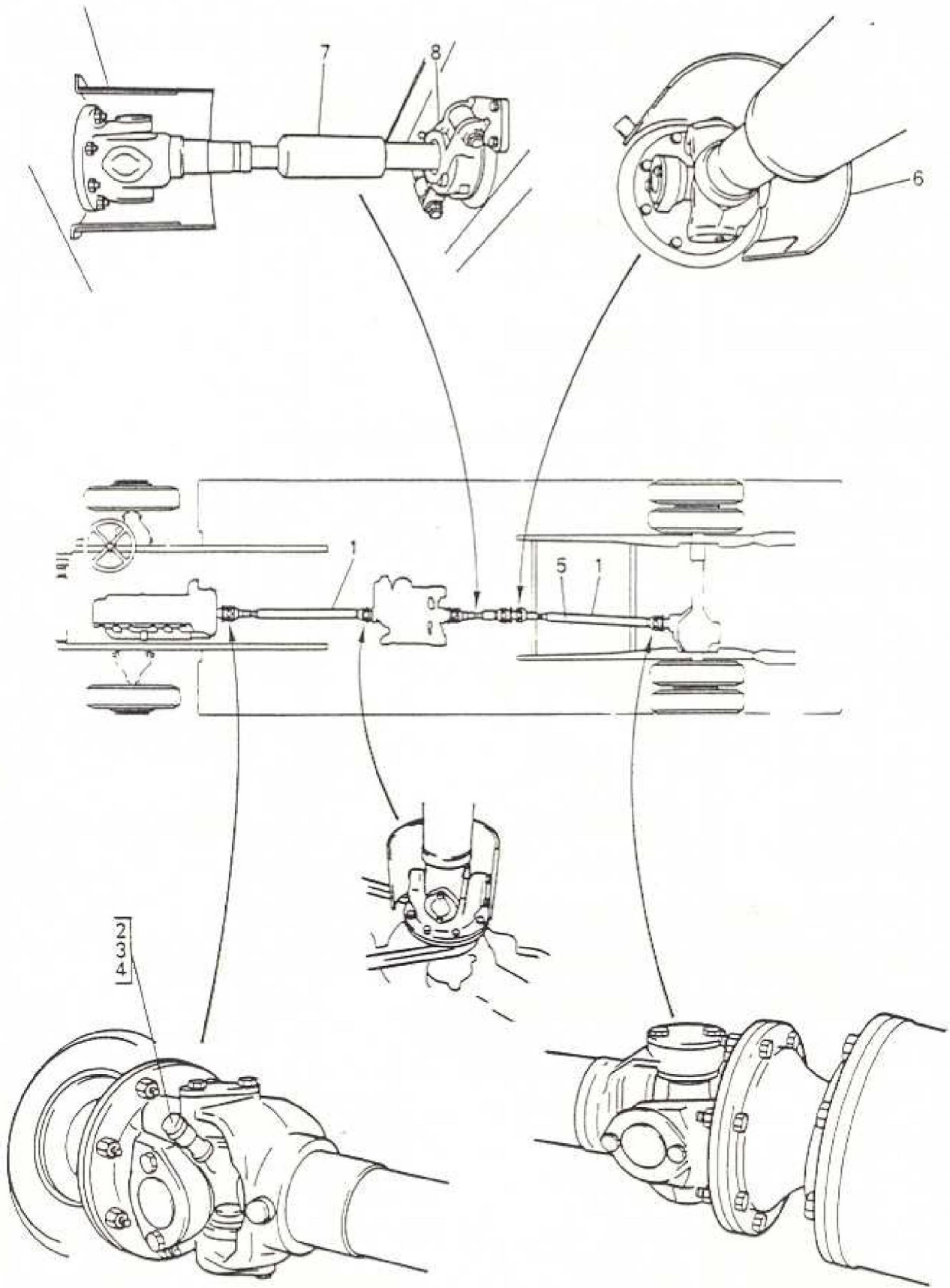
A1

Index

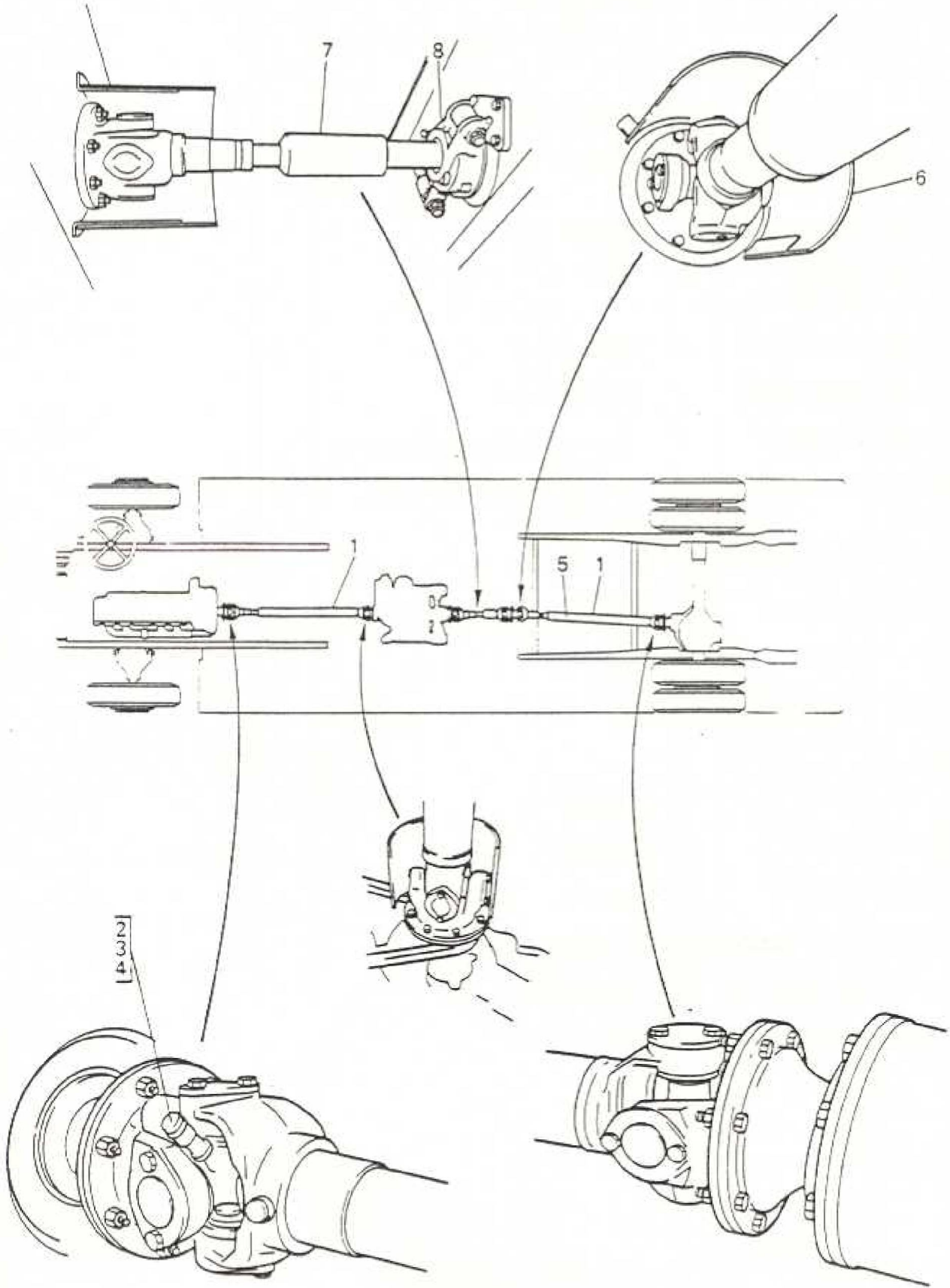
DESCRIPTION	FRAME NO.
CARDEN SHAFTS REAR AXLE AND SUSPENSION FRONT AXLE & FRONT SUSPENSION	A2 to A11 (M903) B1 to C8 (M903) D1 to E8 (M903)



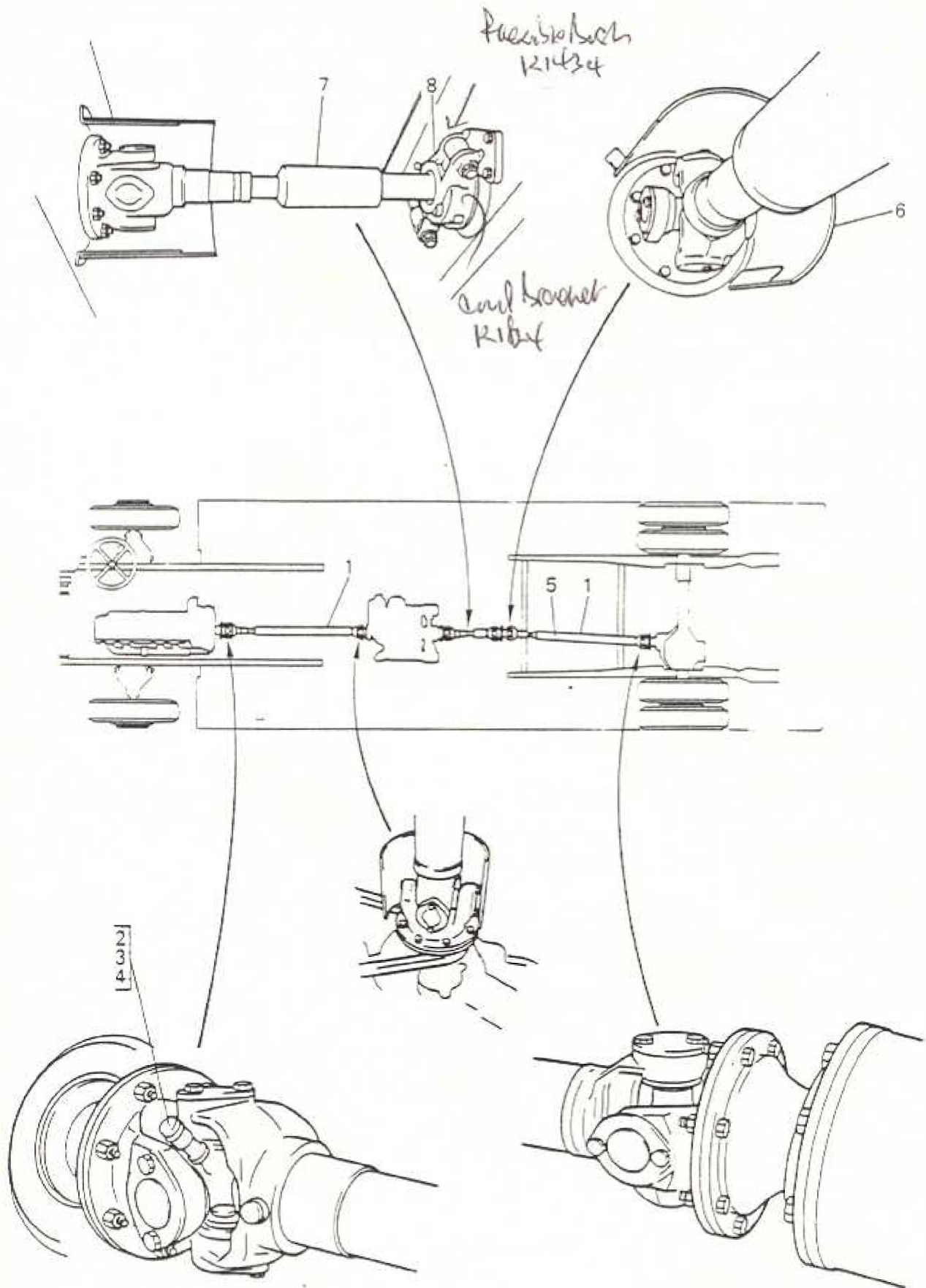
ITEM	MAN. REF.	PART NUMBER	ASSEMBLY = A DETAIL = D		QTY.	REMARKS
			A/D	DESCRIPTION		
*		CA/TS16	A	Cardan Shafts	1	
1		TS16	A	Transmission Shaft & Couplings	2	Front & Rear Assys
*		3068K34	A	Tubular Shaft & Fixed End	1	
*	HSP	K5-62-128	A	Tubular Shaft & Ends	1	
	HSP	GB112-5124				
*	HSP	K5-26-GB37	D	Flange Yoke	1	
*	HSP	28-32-GB12 -4117	D	Tube	1	
*	HSP	K5-42-GB21	D	Sliding End	1	
*	HSP	KL5-GB279	D	Flange Yoke	1	
*	HSP	KR5-5-68	A	Journal Gasket & Retainer	1	
*	HSP	K5-6-78X	A	Needle Roller Cage Coup.	4	
*	HSP	K5-70-GB69	D	Bearing Cap	4	
*	HSP	94-GB516	D	Lock Plate	4	
		21326-212	D	Setscrew	8	
*	HSP	6051-001Y	A	Unit Package	1	Items supplied in Unit Pack. Use up HSP 6051-160Y
2		81-985	D	Lubricator	1	
3	LML	X47737	D	Adaptor	1	Use up AEC 81-1326
4	AEC	Z44937	D	Washer	1	
*	HSP	KR1601GB54	A	Coupling - Sliding End	1	
*	HSP	KL5-2-GB279	D	Flange Yoke	1	
*	HSP	K5-3-GB108	D	Sleeve Yoke	1	



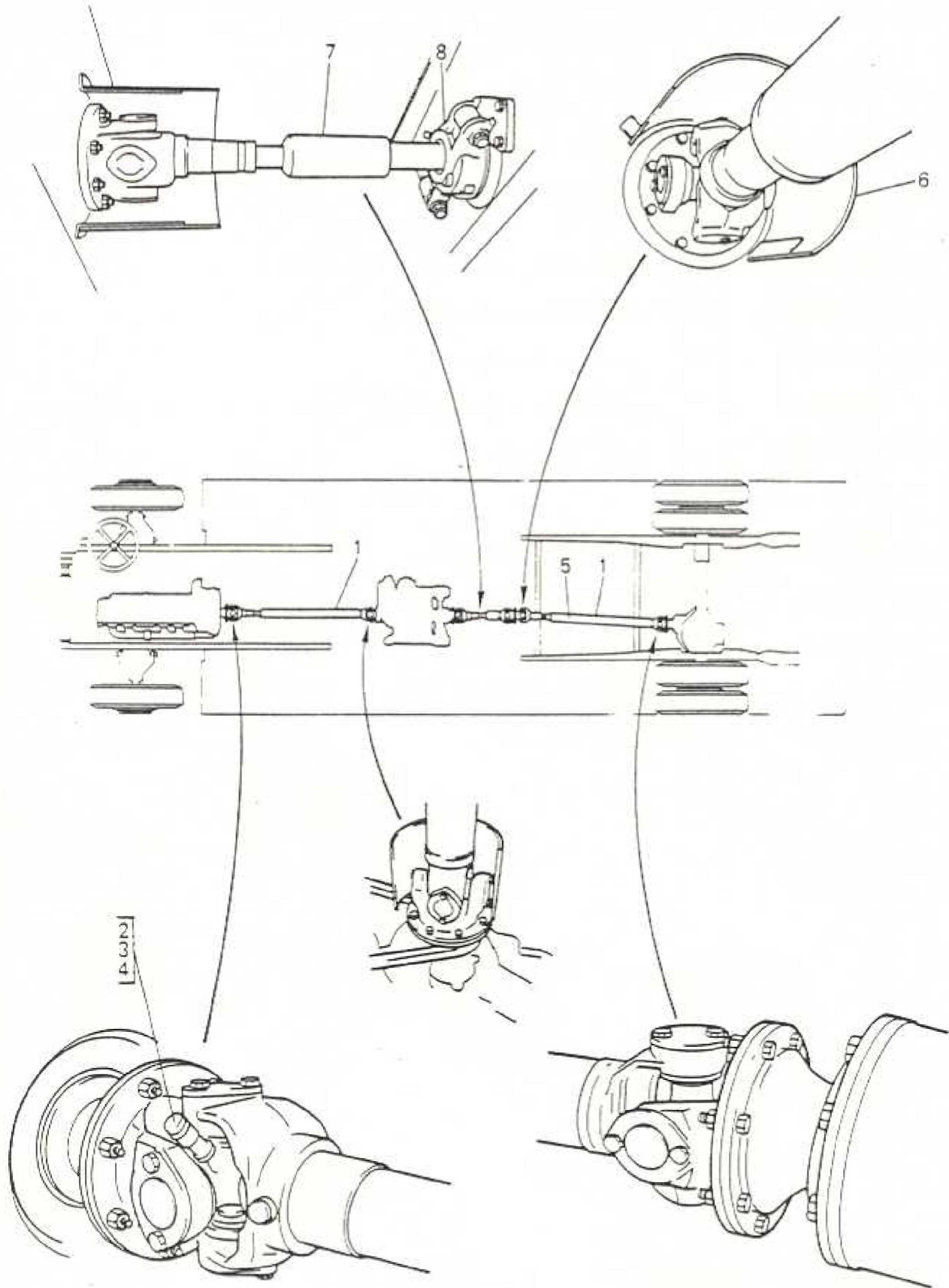
ITEM	MAN. REF.	PART NUMBER	A/D	ASSEMBLY - A	DETAIL - D	QTY.	REMARKS	ISSUE
				DESCRIPTION				
*		CA-TS17	A	Cardan Shafts				
1		TS16	A	Transmission Shaft & Couplings Front		1		
*		3068K34	A	Tubular Shaft & Fixed End		1		
*	HSP	K5-62-128 GB112-5124	A	Tubular Shaft & Ends		1		
*	HSP	K5-26-GB37	D	Flange Yoke		1		
*	HSP	28-32- GB12-4117	D	Tube		1		
*	HSP	K5-42-GB21	D	Sliding End		1		
*	HSP	KL5-GB279	D	Flange Yoke		1		
*	HSP	KR5-5-68	A	Journal, Gasket & Retainer		1		
*	HSP	K5-6-78X	A	Needle Roller and Cage Coupling		4	Use up	
*	HSP	K5-70-GB69	D	Bearing Cap		4		
*	HSP	94-GB516	D	Lockplate		4		
		21326-212	D	Setscrew		8		
*	HSP	6051-001Y	A	Unit Package		1	Items supplied in Unit Pack. Use up HSP 6051-160Y	
2		81-985	D	Lubricator		1		
3	LML	X47737	D	Adaptor		1	Use up AEC 81-1326	
4	AEC	Z44937	D	Washer		1		
*	HSP	KR1601GB54	A	Coupling - Sliding End		1		
*	HSP	KL5-2-GB279	D	Flange Yoke		1		
*	HSP	K5-3-GB108	D	Sleeve Yoke		1		



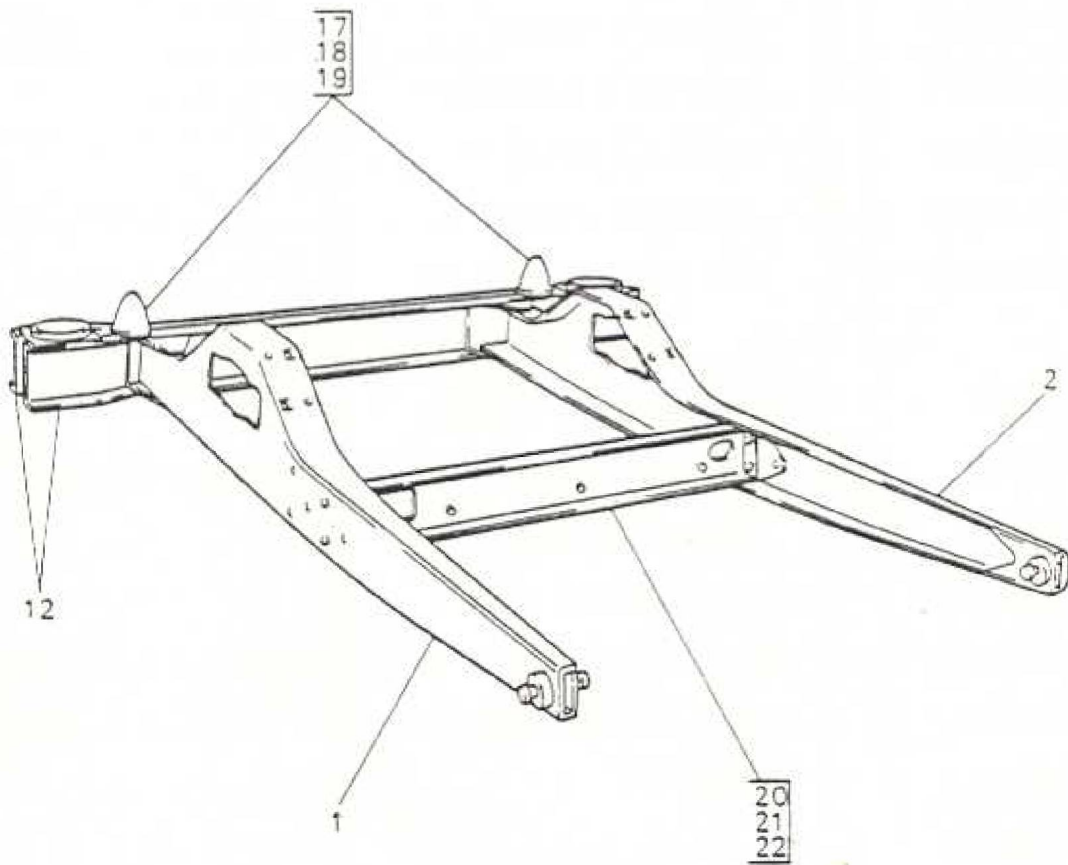
ITEM	MAN. REF.	PART NUMBER	ASSEMBLY - A DETAIL - D		QTY.	REMARKS	ISSUE
			A/D	DESCRIPTION			
5	AEC	K7-0165	A	Rear Transmission Shaft	1	Alt. HSP 60A002V0950 TS33. interchangeable with AEC K7-0165 as a unit only	
*		21461-231	D	Bolt - Coupling	40		
*		21668-123	D	Nut - Coupling - Bolt	40		
*	AEC	Z20/30778	D	Bolt - Intermediate Coupling Bearing - Housing to Body	2		
*	AEC	Z4/30644	D	Washer	2		
*		21621-145	D	Nut	2		
*		21122-034	D	Split Pin	2		
*	AEC	T1/0631	A	Shield - Cardan Coupling Rear of Gearbox	1	Use up	
*	AEC	A83390	D	Shield	1	T1-0261	
*	AEC	A1/83296	D	Support Shield	3		
*	AEC	T1/0622	A	Shield - Cardan Coupling - Front of Gearbox	1		
*	AEC	A2-83300	D	Shield	1		
*	AEC	A2-83212	D	Support	1	Fixing Bolts are Body items	
*	AEC	A2-83213	D	Support	1		
6	AEC	T1/0631	A	Shield - Cardan Coupling - Inter. Brg.	1		
*	AEC	A83390	D	Shield	1		
*	AEC	A1/83296	D	Support Shield	3		

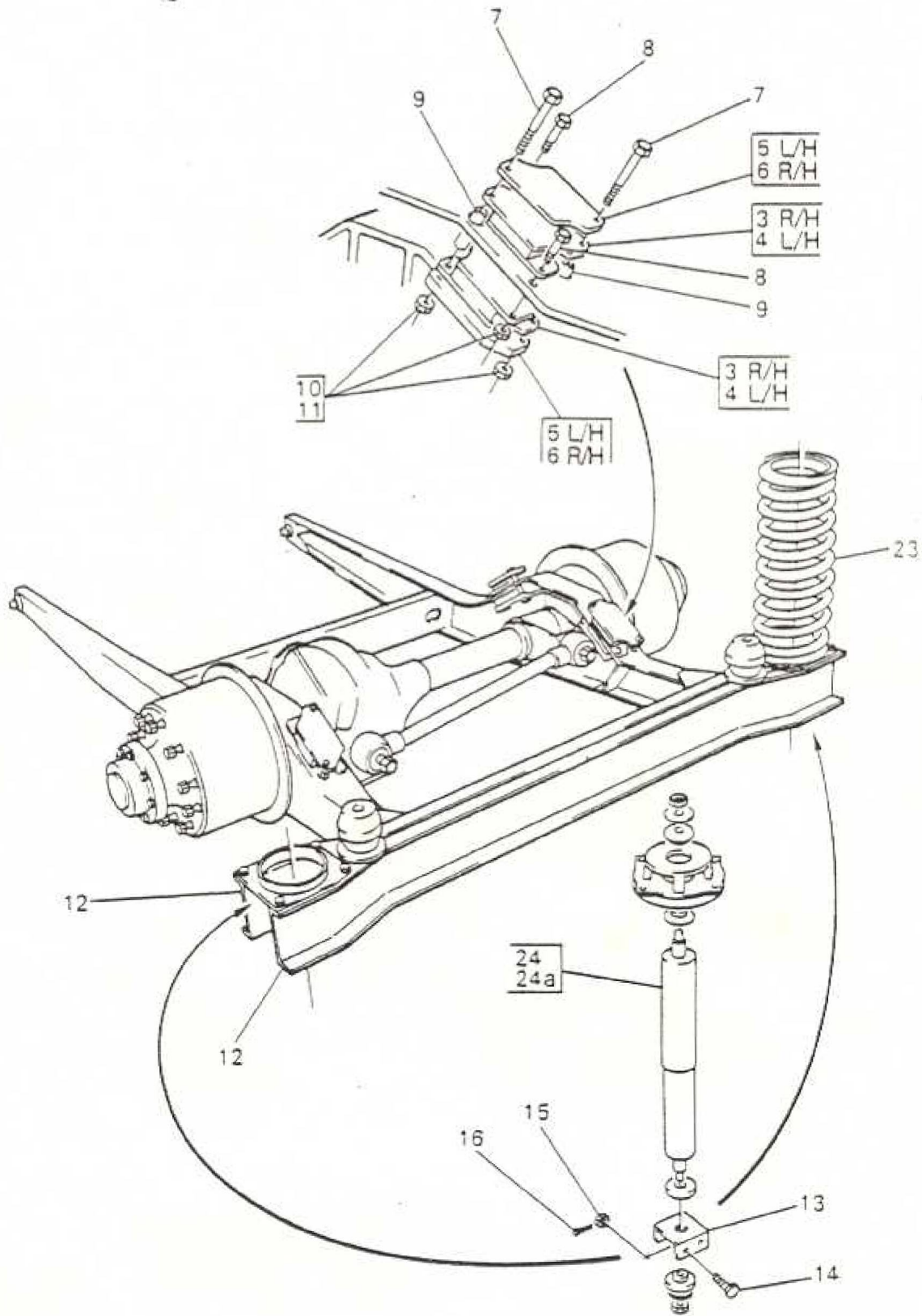


ITEM	MAN. REF.	PART NUMBER	ASSEMBLY - A		DETAIL - D		QTY	REMARKS	ISSUE
			A/D	DESCRIPTION					
*	HSP	KR5-5-68	D	Journal, Gasket & Retainer and Relief Valve			1		
*	HSP	K5-6-78X	D	Needle Rollers & Cage Coup.			4		
*	HSP	K5-70-GB69	D	Bearing Cap			4	Use up	
	HSP	94-GB516	D	Lockplate			4		
		21326-242	D	Setscrew			8		
*	HSP	94-GB2434	D	Lubricator - Journal			1		
*	HSP	94-GB1071	D	Extension - Lubricator			1		
*	HSP	6-75-GB89	D	Washer - Lubricator			1		
		94-GB839	D	Lubricator - Sleeve Yoke			1	Alt. AEC 81-985	
*	HSP	6051-001Y	A	Unit Package			1	Includes items Use up HSP 6051-160Y	
		81-985	D	Lubricator - Coupling			2		
*	LML	X47737	D	Adaptor - Coupling			2	Use up AEC 81-1326	
*	AEC	Z44937	D	Washer - Adaptor			2		
7	AEC	K2-1120	A	Centre Transmission Shaft			1	With bearing of bearing	
8	AEC	K1824	A	Support Bracket			1	Complete with bearing	



ITEM	MAN. REF.	PART NUMBER	A/D	ASSEMBLY - A	DETAIL - D	QTY.	REMARKS	ISSUE
				DESCRIPTION				
*	HSP	KR5-5-68	D	Journal, Gasket & Retainer and Relief Valve		1		
*	HSP	K5-6-78X	D	Needle Rollers & Cage Comp.		4		
*	HSP	K5-70-GB69	D	Bearing Cap		4	Use	
*	HSP	94-GB516	D	Lock Plate		4	up	
		21326-242	D	Setscrew		8		
*	HSP	94-GB2434	D	Lubricator Journal		1		
*	HSP	94-GB1071	D	Extension - Lubricator		1		
*	HSP	6-75-GB89	D	Washer - Lubricator		1		
		94-GB839	D	Lubricator - Sleeve Yoke		1	Alt. AEC 81-985	
*	HSP	6051-001Y	A	Unit Package		1	Includes items Use up HSP 6051-160Y	
		81-985	D	Lubricator - Coupling		2		
*	LML	X47737	D	Adaptor - Coupling		2	Use up AEC 81-1326	
*	AEC	Z44937	D	Washer - Adaptor		2		
*		21461-231	D	Bolt - Coupling		32		
*		21668-123	D	Nut - Coupling - Bolt		32		
*	AEC	T1-0631	A	Shield - Cardan Coupling		1	Use up T1-0621	
*	AEC	A83390	D	Shield		1		
*	AEC	A1/83296	D	Support - Shield		3		
*		21461-229	D	Bolt		3		
*		21668-123	D	Nut		3		
*	AEC	T1/0622	A	Shield - Cardan Shaft Front of Gearbox		1		
*	AEC	A2-83300	D	Shield		1		
*	AEC	A2-83212	D	Support		1		
*	AEC	A2-83213	D	Support		1		
*		21366-399	D	Bolt		2		
*		21668-123	D	Nut		2		



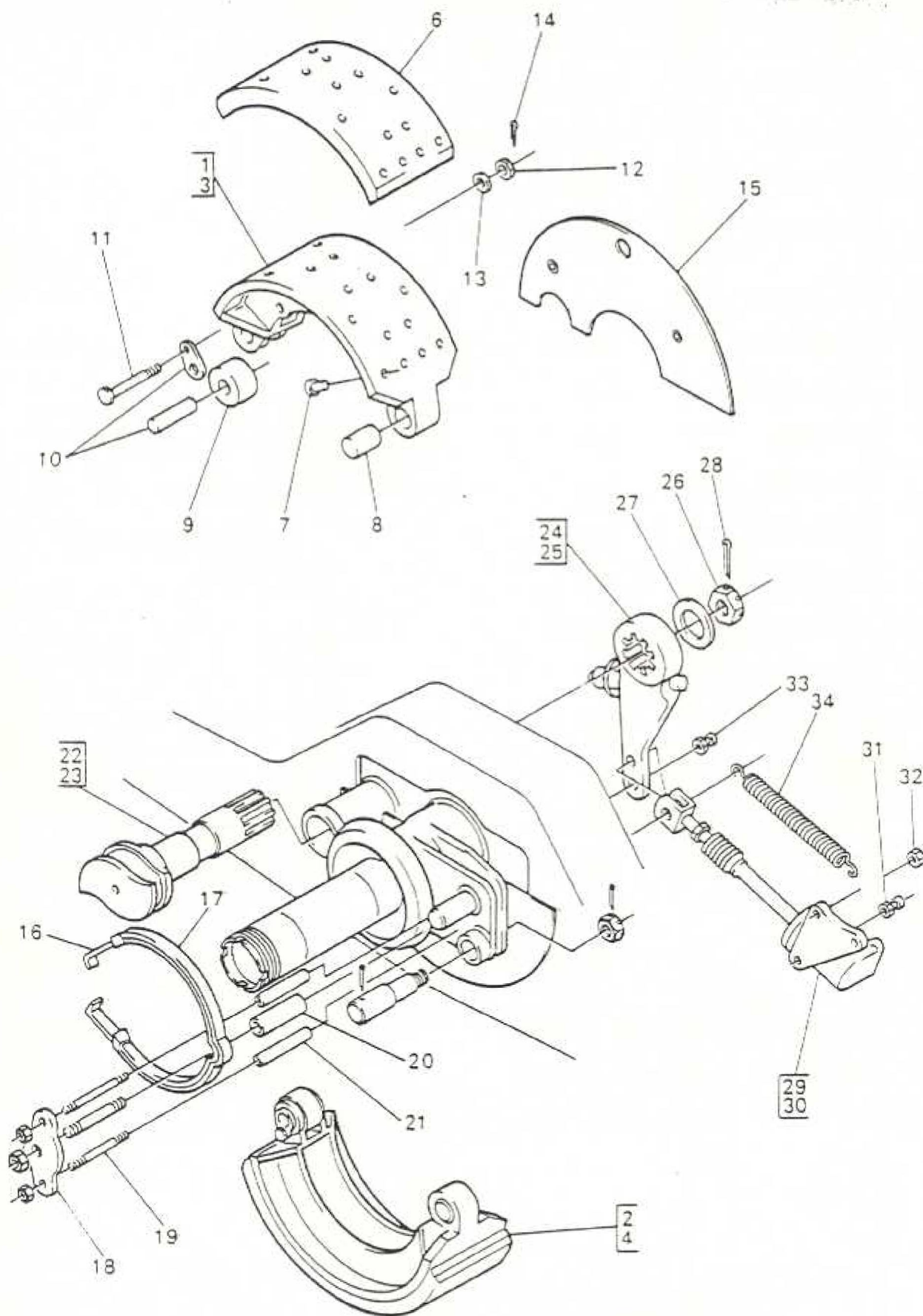


ITEM	MAN. REF.	PART NUMBER	ASSEMBLY - A		DETAIL - D		QTY.	REMARKS	ISSUE
			A/D	DESCRIPTION					
		CA-RA47	A	Rear End Installation Assy			1		
		3064F.313	A	Rear 'B' Frame			1		
		3064F.278	A	Rear End Frame & Axle Casing			1		
		3064F.248	A	Axle Coning, Studs & Dowels			1		
1	AEC	FA1701	A	Radius Arm & Pin R/H			1		
2	AEC	FA1702	A	Radius Arm & Pin L/H			1		
*		341-1276	D	Unit No. Plate			1		
3	AEC	A88033	D	Axle Mounting - R.H.			4	Sandwich Rubbers	
4	AEC	A88034	D	Axle Mounting - L.H.			4		
5		3064E371	D	Cap - L.H.			2	Use up AEC F12222	
6		3064F371	D	Cap - R.H.			2	Use up AEC F12223	
7		21461-330	D	Bolt - Mountings			8	Use up	
8		21461-260	D	Bolt - Mountings			8	Use up AEC Z1830793	
9	AEC	Z14541	D	Distance Tube			8	Use up AEC Z1830788	
10		21668-125	D	Nut			16	Use 21661-045 with Z1830793 etc.	
11		21122-034	D	Split - Pin			16	Use up with 21661-045	
12		21177-823	D	PK Drive Screw (for unit no. plate)			2		
*	AEC	Y27703	D	Rear Crossmember			2		
*	AEC	L16434	D	Restrictor Bracket N'S			1		
*	AEC	L16435	D	Restrictor Bracket O'S			1		

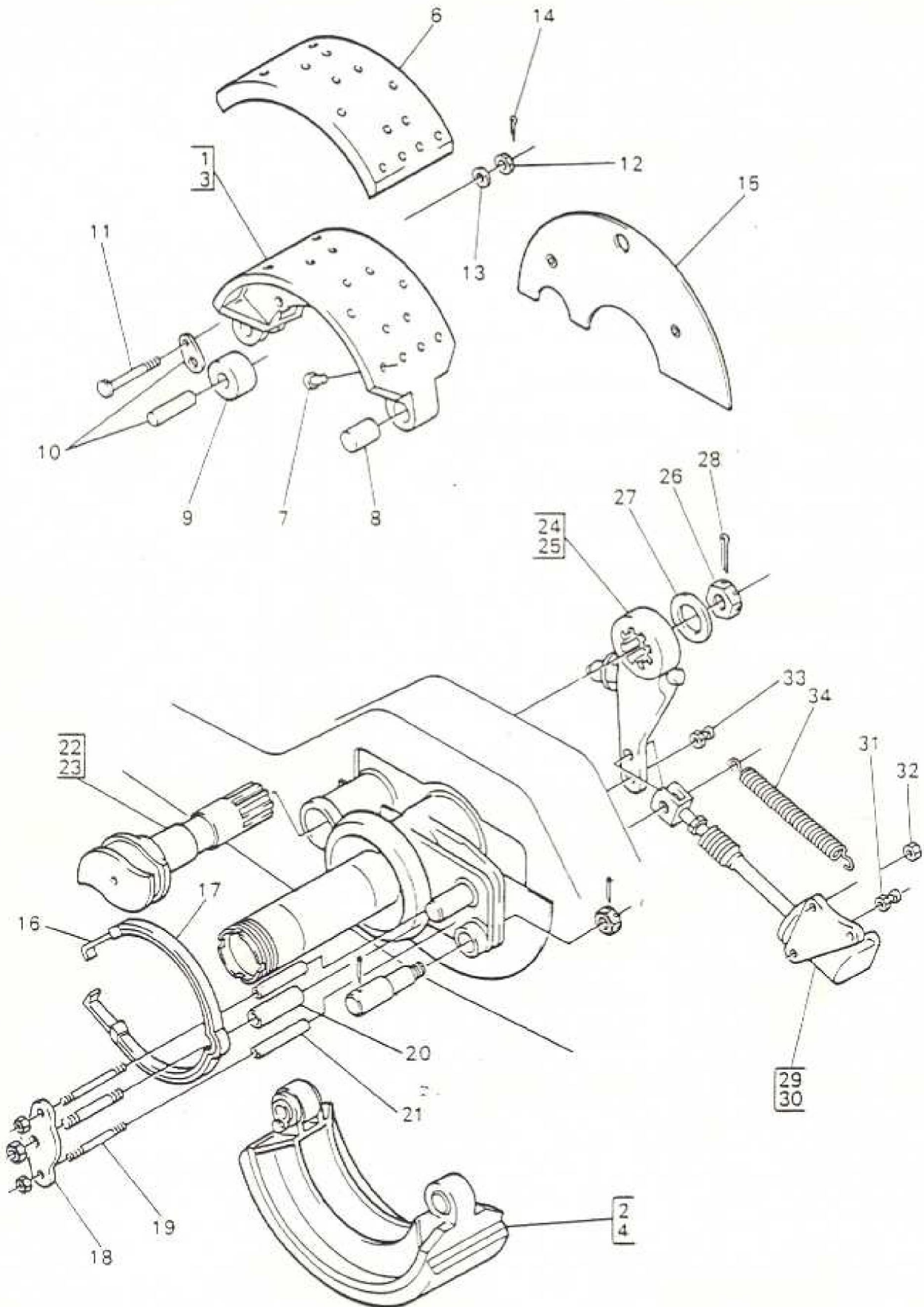
ITEM	MAN. REF.	PART NUMBER	ASSEMBLY - A		DETAIL - D		QTY.	REMARKS	ISSUE
			A/D	DESCRIPTION					
*		21461-259	D	Bolt + Member			2	½" UNF x 2"	
*		21366-807	D	Bolt - Bracket			2	½" UNF x 1.1/8"	
*		21461-260	D	Bolt - Bracket			4	½" UNF x 1.3/4"	
*		21668-125	D	Nut - Bracket			16	½" UNF	
*		21461-26	D	Bolt - Bracket			8	Use up 21461-262 with Z5 30646 in the lower position	
*	AEC	Z5/30646	D	Washer - Bracket			4		
13	AEC	F 26002	D	Bottom Bracket - Shock Absorber			2		
14	AEC	Z18/30789	D	Bolt			8	Use up AEC Z9/30777	
15		21661-045	D	Nut			8	Use up 21621-145	
16		21122-034	D	Split Pin			8	Use with AEC Z9/30777	
17	AEC	F.31005	D	Bump Stop Mounting Plate			2	Use up stock with AEC F30915 or modify to 3079Y727 to make 3079Y725	
18	AEC	F.30915	D	Bump stop			2	Use up stock Bump stop & mounting plate fixings or buffer assembly fixings	
*		21661-003	D	Nut			4		
*		21137-571	D	Washer			4		
19		3079Y725	A	Buffer Assembly			2	Replaces bump stop & bump stop mntg. in pairs.	
20	AEC	Y.27702	D	Front Crossmember			1		
21	AEC	Z2/46578	D	Packing			A/R	Use up Y/25667	
22	AEC	Y1'25668	D	Packing			A/R		
*		21461-230	D	Bolt			2		

ITEM	MAN. REF.	PART NUMBER	A/D	ASSEMBLY = A	DETAIL = D	QTY.	REMARKS	ISSUE
				DESCRIPTION				
*		21461-231	D	Bolt		2		
*		21661-003	D	Nut		4		
*		21137-571	D	Washer		4		
*		21461-259	D	Bolt - Top flange		8		
*		21668-125	D	Nut		8		
*	AEC	Y2966	A	Tie Bar Tube		1	Use up Y2963	
*	AEC	Z20'30715	D	Setscrew		2		
*	AEC	Z20'30716	D	Bolt		2		
*		21661-003	D	Nut		2		
*		21137-571	D	Washer		2	Use up 21137-512	
*		11411-105	D	Locking Wire		A/R		
*	AEC	Y32750	D	Jacking Pad		2		
*		21461-326	D	Bolt - Pad		2		
*	AEC	F15759	D	Bottom Spring		2		
*	AEC	Z18/30789	D	Bolt - Spring Pad		8		
*		21661-045	D	Nut - Spring Pad		8		
*		21122-034	D	Split Pin - Spring Pad		8		
*		21461-231	D	Bolt - Jacking Pad		2		
*		21661-004	D	Nut Jacking Pad		4		
*		21137-571	D	Washer - Jacking Pad		4		

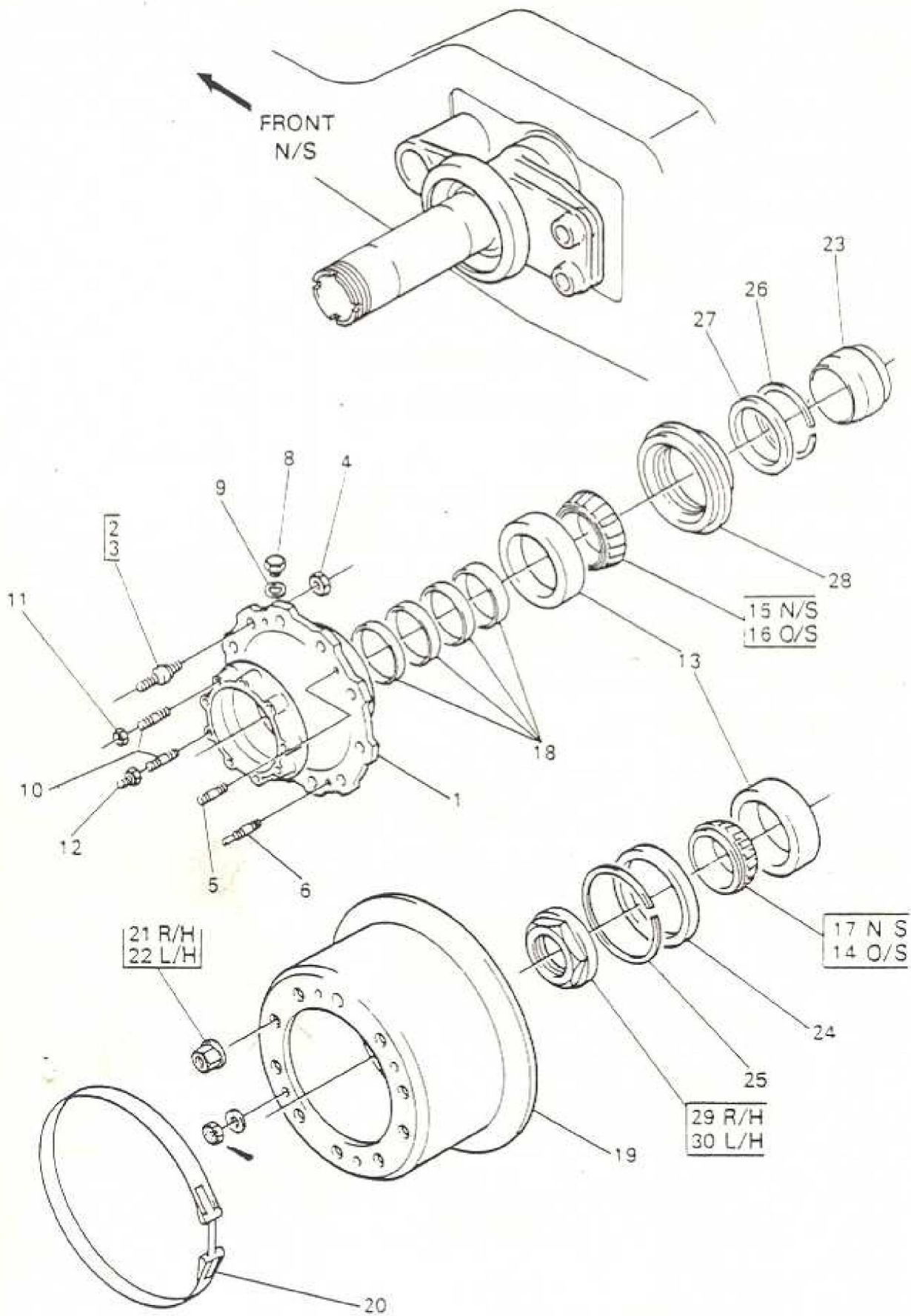
ITEM	MAN. REF.	PART NUMBER	ASSEMBLY = A DETAIL = D		QTY.	REMARKS	ISSUE
			A/D	DESCRIPTION			
*		341-1276	D	Unit No. Plate	1		
*		21177-823	D	Pk Drive Screw	2		
*	AEC	Z3/48487	D	Bracket - Oper. Rod LH	1		
*	AEC	Z3/48488	D	Bracket RH	1		
*		21461-217	D	Bolt - Bracket to Rad. Arm	2		
*		21668-132	D	Nut	2		
*		21131-327	D	Washer	2		
*		21461-260	D	Bolt	2		
*		21461-261	D	Bolt	8	For use with	
*		21461-262	D	Bolt	4	restrictor and	
*		21366-807	D	Bolt	2	reinforcing brackets	
*		21668-125	D	Nut	16		
*	AEC	Z5/30646	D	Washer	8		
*		21461-260	D	Bolt	4		
*		21461-261	D	Bolt	8	For use with	
*		21461-259	D	Bolt	2	restrictor	
*		21366-807	D	Bolt	2	brackets - <u>No</u>	
*		21668-125	D	Nut	16	reinforcing fitted	
*	AEC	Z5/30646	D	Washer	4		
23	AEC	F31702	A	Coil Spring - Suspension	2	Ref only - fitted to Body Mount	
24		SA26	A	Shock Absorber	2	Ref only - fitted to	
24a		SA6	A	Shock Absorber	A/R	Body Mount	
			A	Wheel & Tyres	4	See Chart 0208	



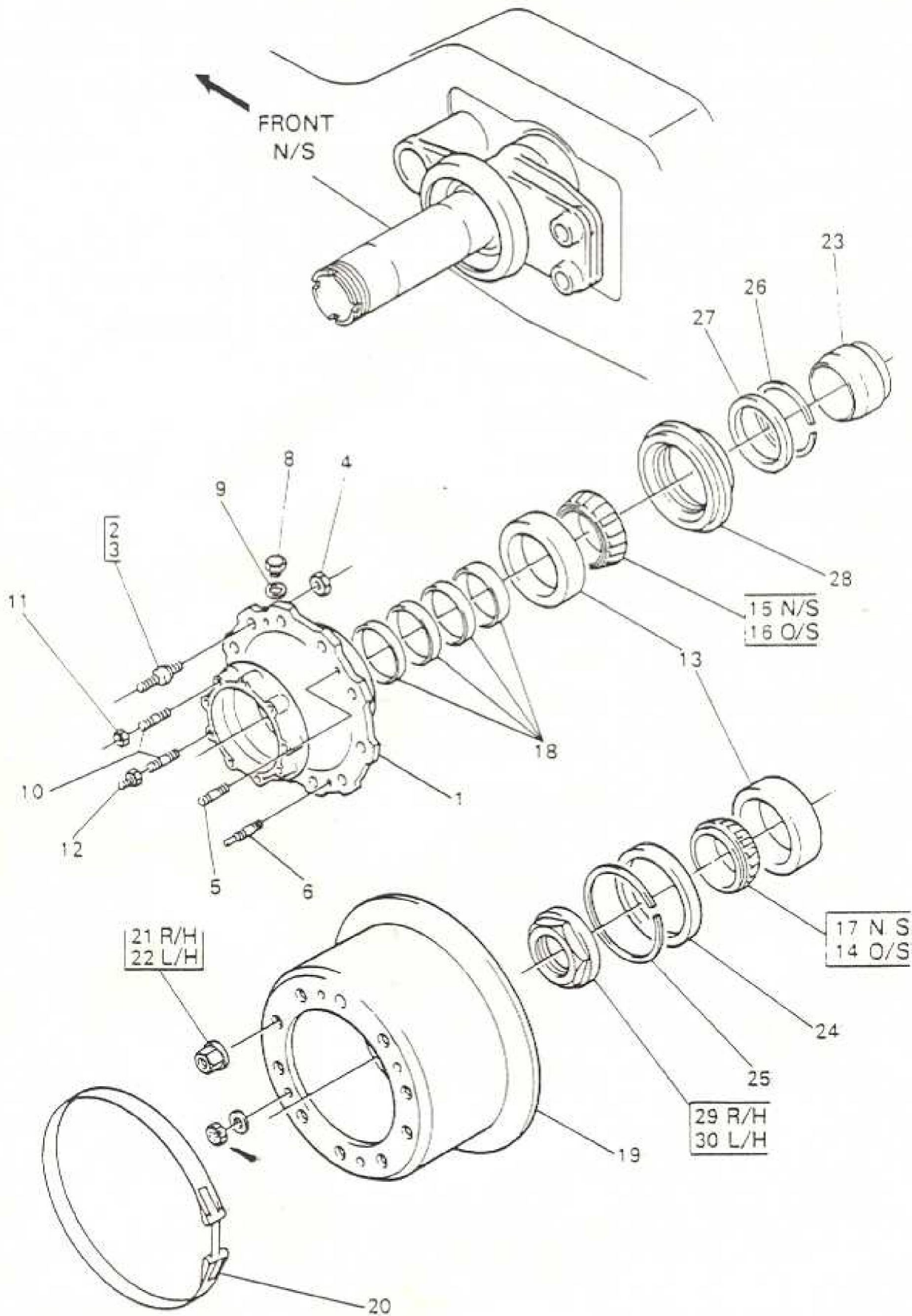
ITEM	MAN. REF.	PART NUMBER	A/D	ASSEMBLY - A	DETAIL - D	QTY.	REMARKS	ISSUE
				DESCRIPTION				
1	AEC	F1/0860	A	Brake Shoe N.S. Upper		1		
2	AEC	F1/0859	A	Brake Shoe N.S. Lower		1		
3	AEC	F1/0864	A	Brake Shoe O.S. Upper		1		
4	AEC	F1/0863	A	Brake Shoe O.S. Lower		1		
5	AEC	F14363	D	Brake Shoe		1	Use up F14362	
6			D	Lining		1	See Chart 0299	
7		3080Z114	D	Rivet		20		
8	AEC	Z3/10250	D	Bush Pivot		1		
9	AEC	F10901	D	Roller Brake Shoe		1		
10	AEC	F9501	D	Plate & Pin - Roller		1		
11		21425-019	D	Bolt		1		
12		21621-141	D	Nut		1		
13		21131-323	D	Washer		1		
14		21122-007	D	Split Pin		1		
15	AEC	F21106	D	Plate		2		
*		21122-078	D	Split Pin		4		
16	AEC	F15502	D	Hold Off Spring		2		
17	AEC	FA0301	D	Hold Off Spring		2		
18	AEC	F29704	D	Location Plate		2		
*		21621-101	D	Nut - Plate		6		
*		11411-106	D	Locking Wire		A/R		
19	AEC	F11716	D	Retaining Pin		4		
20	AEC	Z7/44837	D	Distance Piece		2		



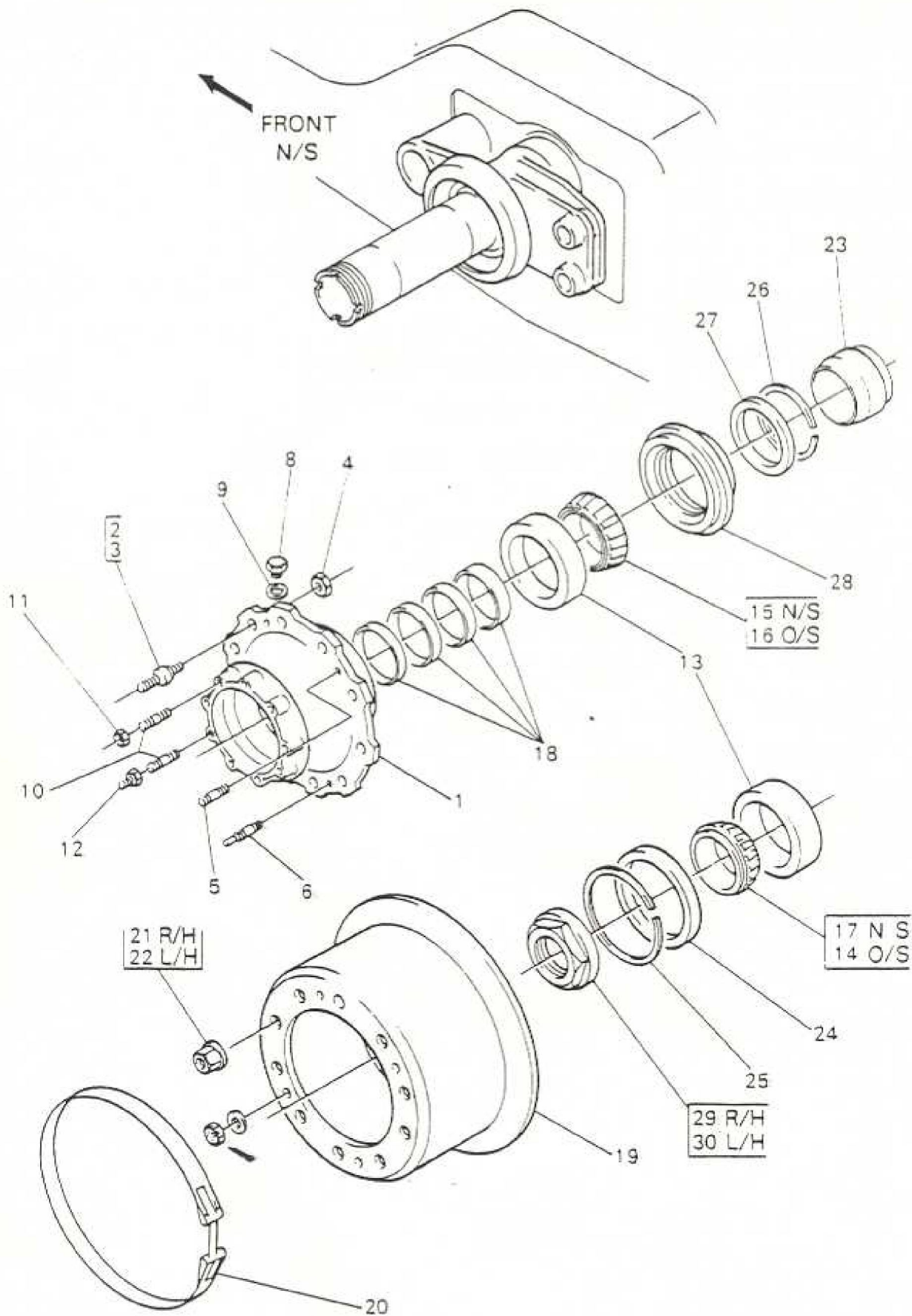
ITEM	MAN. REF.	PART NUMBER	A/D	ASSEMBLY * A	DETAIL * D	QTY.	REMARKS	ISSUE
				DESCRIPTION				
21	AEC	Z7/44836	D		Distance Piece	4		
22	AEC	F1/12809			Brake Camshaft - L/H	1		
23	AEC	F1/12808			Brake Camshaft - R/H	1		
24	AEC	G5623	A		L/H Brake Camshaft Lever			
25	AEC	G5624	A		R/H Brake Camshaft Lever			
26		21661-047	D		Nut - Camshaft Lever	2		
27	AEC	Z2/43224	D		Washer - Camshaft Lever	2		
28		21122-034	D		Split Pin - Camshaft Lever	2		
*		23472-021	D		Lubricator	2	AEC 81-312	
29		3065G-1703	A		Brake Cylinder N/S - Clayter	1	Alt.	
29		3065G-1719	A		Brake Cylinder N/S - Lockheed	1	Alt.	
30		3065G-1704	A		Brake Cylinder O/S - Clayter	1	Alt.	
30		3065G-1720	A		Brake Cylinder O/S - Lockheed	1	Alt.	
31	AEC	Z2/31965	D		Nut & P/O Spring Anchor	2		
32		21661-004	D		Nut	4		
*		21137-574	D		Washer	6		
33	AEC	G1/14737	D		Pivot Pin - Cylinder	2		
*		21661-048	D		Nut - Pin - Cylinder	2		
*		21122-010	D		Split Pin - Nut Cylinder	2		
34	AEC	Z1/45208	D		P/O Spring - Cylinder	2		



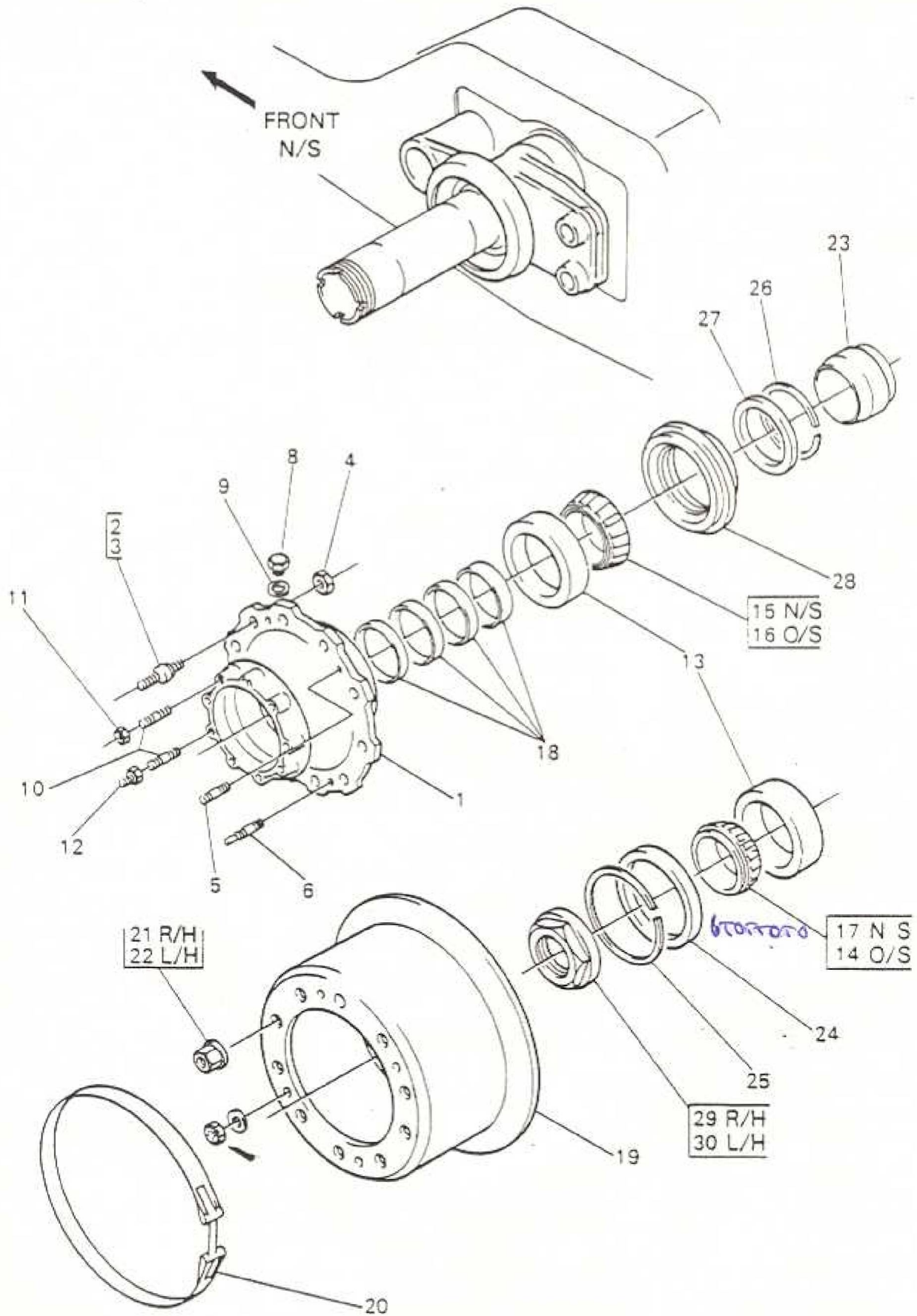
ITEM	MAN. REF.	PART NUMBER	A/D	ASSEMBLY - A	DETAIL - D	QTY.	REMARKS	ISSUE
				DESCRIPTION				
		3064F-253	A	Rear Hub & Brake Drum O/S		1	Ref. Advice F535 on	
		3064F-254	A	Rear Hub & Brake Drum N/S		1	Bellows Gland Units	
		3064F-257	A	Rear Hub & Stud O/S		1		
		3064F-256	A	Rear Hub & Stud N/S		1		
1	AEC	F17571	D	Rear Hub		1		
2		3064F-360	D	Wheel Stud R/H		10	F 25341	
3		3064F-361	D	Wheel Stud L/H		10	F 25342	
*		21123-319	D	Dowel Stud		10		
*		3064F-29	D	Lockwasher		5		
4	AEC	Z3/31955	D	Locknut		10	Use up Z/31958	
5	AEC	Z11/30517	D	Stub - Hub to Drum		3		
6	AEC	Z11/30516	D	Stub - Hub to Drum		1		
7		21621-105	D	Nut - Hub to Drum		4		
8	AEC	Z1/44528	D	Plug - Hub		1		
9		23131-141	D	Washer - Plug		1		
*	AEC	Z1/44092	D	Dowel - Rubbing Ring		1		
10	AEC	Z9/30500	D	Stud - Driving Shaft		9		
11		21661-006	D	Nut - Stud		6	Use up Z2-31988	
12		21661-006	D	Nut - Wheel Disc Brake		3	Use up Z2-31988	
*	AEC	L14536	D	Wheel Stud Nut O/S		10		
*	AEC	L14537	D	Wheel Stud Nut N/S		10		
13		26174-648	D	Outer Cap - Bearing		2		
14		26174-156	D	Outer Bearing O/S		1		



ITEM	MAN. REF.	PART NUMBER	A/D	ASSEMBLY = A	DETAIL = D	QTY.	REMARKS	ISSUE
				DESCRIPTION				
15		26174-156	D		Inner Bearing N/S	1		
16		26174-155	D		Inner Bearing O/S	1		
17		26174-155	D		Outer Bearing N/S	1		
18	AEC	Z5/44878	D		Bearing Spacer	A/R		
*	AEC	F4050	A		Brake Drum & Anti-Squeal Band	1		
19	AEC	F1/15617	D		Brake Drum	1		
20	AEC	F5608	A		Anti-Squeal Band - Comp.	1		
*		21131-336	D		Washer - Hub to Drum	4		
*	AEC	F21435	D		Joint - Retainer - Bellows Gland	2		
*		3064F-258	A		Bellows Gland & Ring	2	Ref. ADV F535	
*		81-2376	D		Bellows Gland	1	These items Required For Bellows Gland Hub Assys Only. (Not illustrated)	
*	AEC	F19813	D		Rubbing Ring	1		
*	AEC	F50902	D		Retainer - Bellows Gland	2		
*		21366-804	D		Setscrew - Retainer	12		
*		21137-569	D		Washer	12		
*	AEC	Z7/44811	D		Distance Piece	2		
*	AEC	Z46464	D		Packing Piece	2		
*	AEC	Z43966	D		Joint	2		

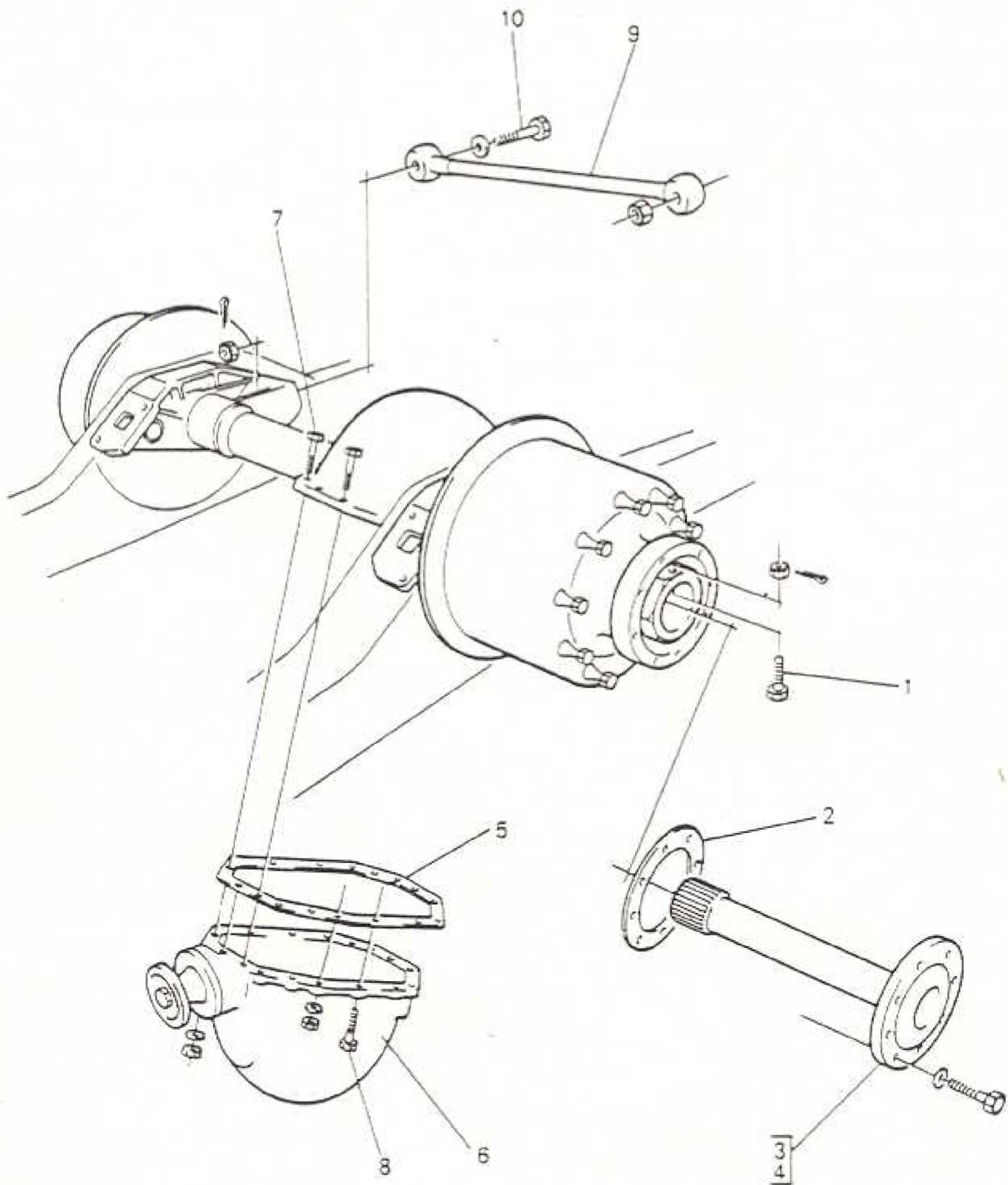


ITEM	MAN. REF.	PART NUMBER	A/D	ASSEMBLY - A	DETAIL - D	QTY.	REMARKS	ISSUE
				DESCRIPTION				
*		3064F-269	A	Rear Hub & Brake Drum O/S		1		
*		3064F-270	A	Rear Hub & Brake Drum N/S		1		
*		3064F-271	A	Rear Hub & Studs O/S		1		
*		3064F-272	A	Rear Hub & Studs N/S		1		
1	AEC	F17575	D	Rear Hub		1		
2		3064F-360	D	Wheel Stud R/H		10		
3		3064F-361	D	Wheel Stud L/H		10		
*		21123-319	D	Dowel		10		
4	AEC	Z3/31955	D	Locknut		10	Use up Z31958	
*		3064F-29	D	Lockwasher		5		
5	AEC	Z11/30517	D	Stud - Hub to Drum		3		
6	AEC	Z11/30516	D	Stud - Hub to Drum		1		
*		21621-105	D	Nut - Hub to Drum		4		
*		81-1294	D	Adaptor - Oil		1		
*		103-44	D	Plug - Oil Adaptor		1		
*		23136-305	D	Washer - Plug		1		
16		26174-155	D	Inner Bearing O/S		1		
15		26174-156	D	Inner Bearing N/S		1		
14		26174-156	D	Outer Bearing O/S		1		
17		26174-155	D	Outer Bearing N/S		1		
18	AEC	Z5/44878	D	Bearing Spacer		4	A/R	
10	AEC	Z9/30500	D	Stud - Driving Shaft		9		
11		21661-006	D	Nut		6	Use up Z2-31988	
12		21661-006	D	Nut		3	Use up Z2-31988	
13		26174-648	D	Outer Cup		2		
21	AEC	L14536	D	Wheel Nut R/H		10		
22	AEC	L14537	D	Wheel Nut L/H		10		
*	AEC	F4050	A	Brake Drum & Anti-Squeal Band		1		

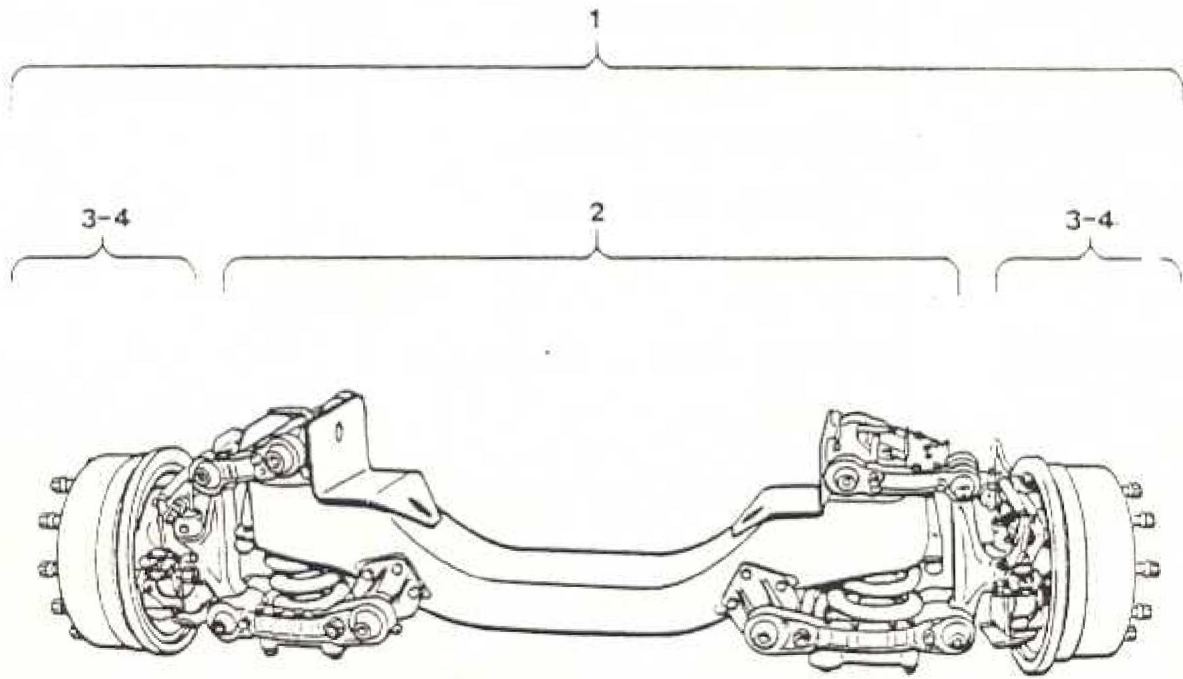


C6REAR AXLE AND
SUSPENSION HUB AND
BRAKE DRUM

ITEM	MAN. REF.	PART NUMBER	A/D	ASSEMBLY = A	DETAIL = D	QTY.	REMARKS	ISSUE
				DESCRIPTION				
19	AEC	F1/15617	D		Brake Drum	1		
20	AEC	F5608	A		Anti-Squeal Band	1		
*		21131-336	D		Washer - Hub to Drum	4		
23	AEC	Z9/44894	D		Distance Piece	2	Ref. Advice F535	
24		5091-133	D		Oil Seal	2		
25	AEC	Z48816	D		Circlip	2	Lip Seal Only	
26	AEC	Z44867	D		Circlip	2		
27		5091-134	D		Oil Seal	2		
28	AEC	F50904	D		Retainer - Oil Seal	2		
29	AEC	F18038			Hub Nut - R/Hand	1		
30	AEC	F18037			Hub Nut - L/Hand	1		

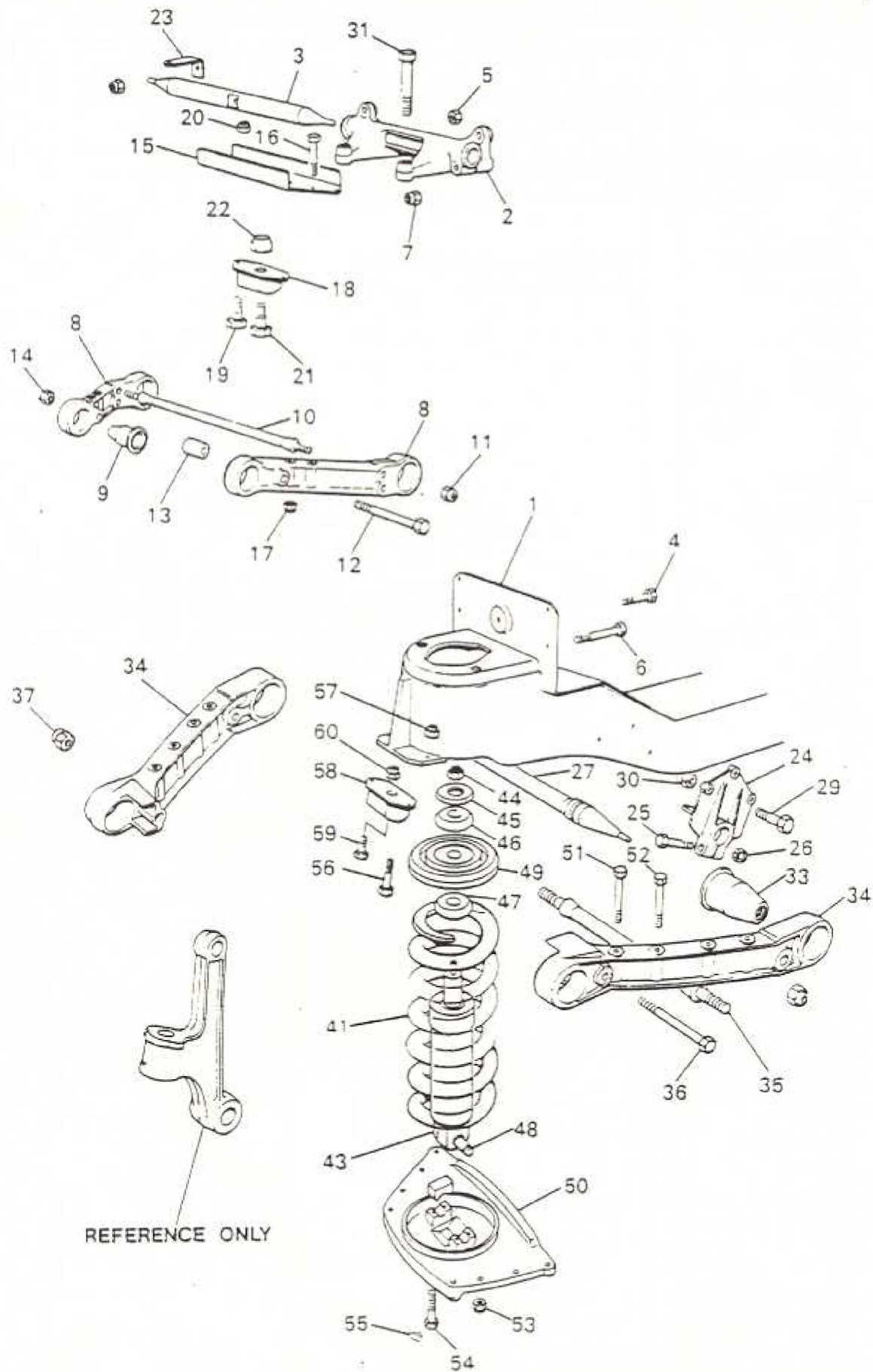


ITEM	MAN. REF.	PART NUMBER	A/D	ASSEMBLY - A	DETAIL - D	QTY.	REMARKS	ISSUE
				DESCRIPTION				
1	AEC	Z16/30794	D	Locking Bolt - Axle Nut		4		
*		21621-142	D	Nut - Bolt		4		
*		23131-421	D	Washer - Bolt		4		
*		21122-018	D	Split Pin		4		
2	AEC	F21436	D	Joint - Driving Shaft		2	Bellows Gland Units	
2	AEC	F21445	D	Joint - Driving Shaft		2	Lip Seal Units	
3	AEC	F1/15236	D	Driving Shaft - R/H		1		
4	AEC	F1/15237	D	Driving Shaft - L/H		1		
*		21137-578	D	Washer		18		
5	AEC	F21433	D	Joint - Diff. to Axle Casing		1		
6		DU17	A	Differential		1		
7		21461-353	D	Bolt - Diff. to Axle Casing		2		
8		21461-321	D	Bolt - Diff. to Axle Casing		3		
*		21461-262	D	Bolt - Diff. to Axle Casing		1		
*		21661-105	D	Nut - Diff. to Axle Casing		13		
*		21137-020	D	Washer - Diff. to Axle Casing		16		
9	AEC	Y1/8102	A	Panhard Rod		1	Mounted to Body	
10	AEC	Z23-30726	D	Bolt - Rod & Rear Axle		1	Use up Z18-30766	
*		21668-130	D	Nut - Bolt		1	with nut 21661-049	
*	AEC	ZB-30631	D	Washer		1	& Split Pin 21122-077	
<u>ATTACHING PARTS</u>								
	AEC	FA-1803	A	Bracket - Panhard Rod - Body		1		



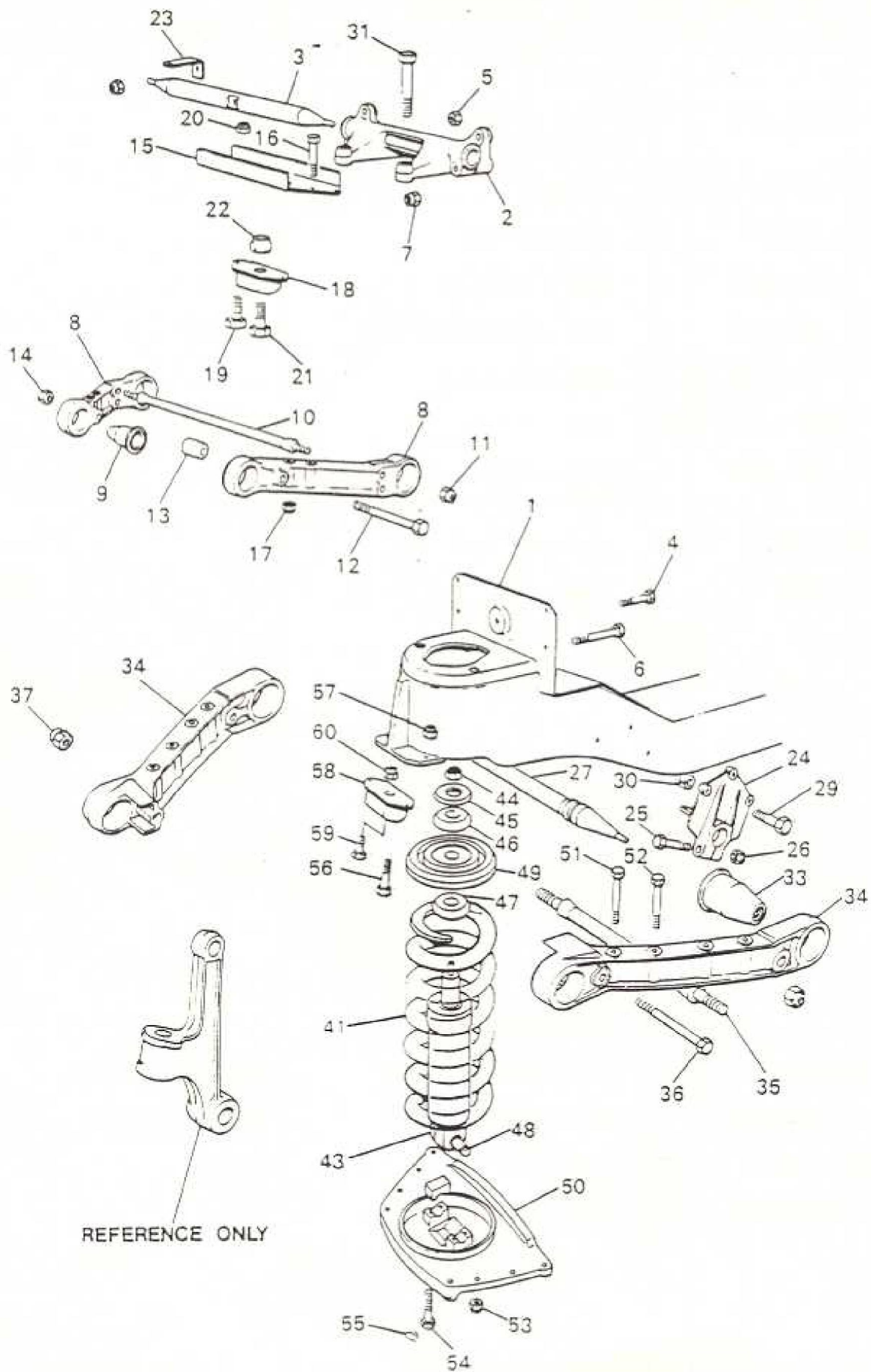
D2

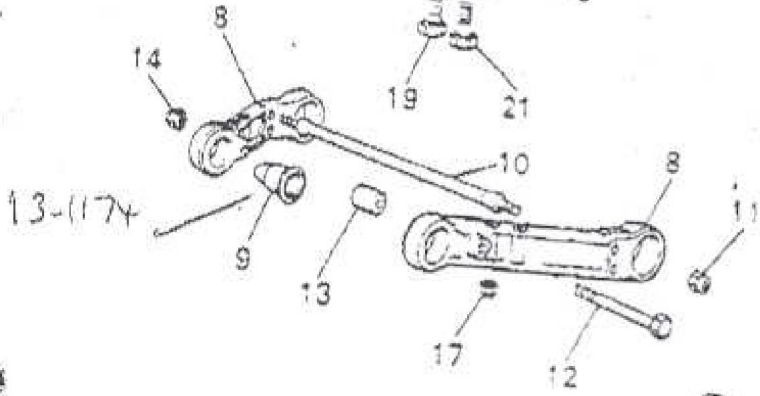
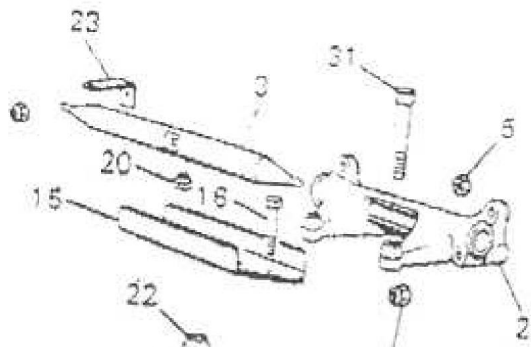
ITEM	MAN. REF.	PART NUMBER	ASSEMBLY = A DETAIL = D		QTY.	REMARKS	ISSUE
			A/D	DESCRIPTION			
1			A	Front Axle	1		
2		3069L-221	A	Front Suspension and Box Member	1	CA-FA 48	
3 & 4		3069L-197	A	King Post, Swivel, Hub and Drum (RH)	1	FA 48	
3 & 4		3069L-198	A	King Post, Swivel, Hub and Drum (LH)	1	FA 48	



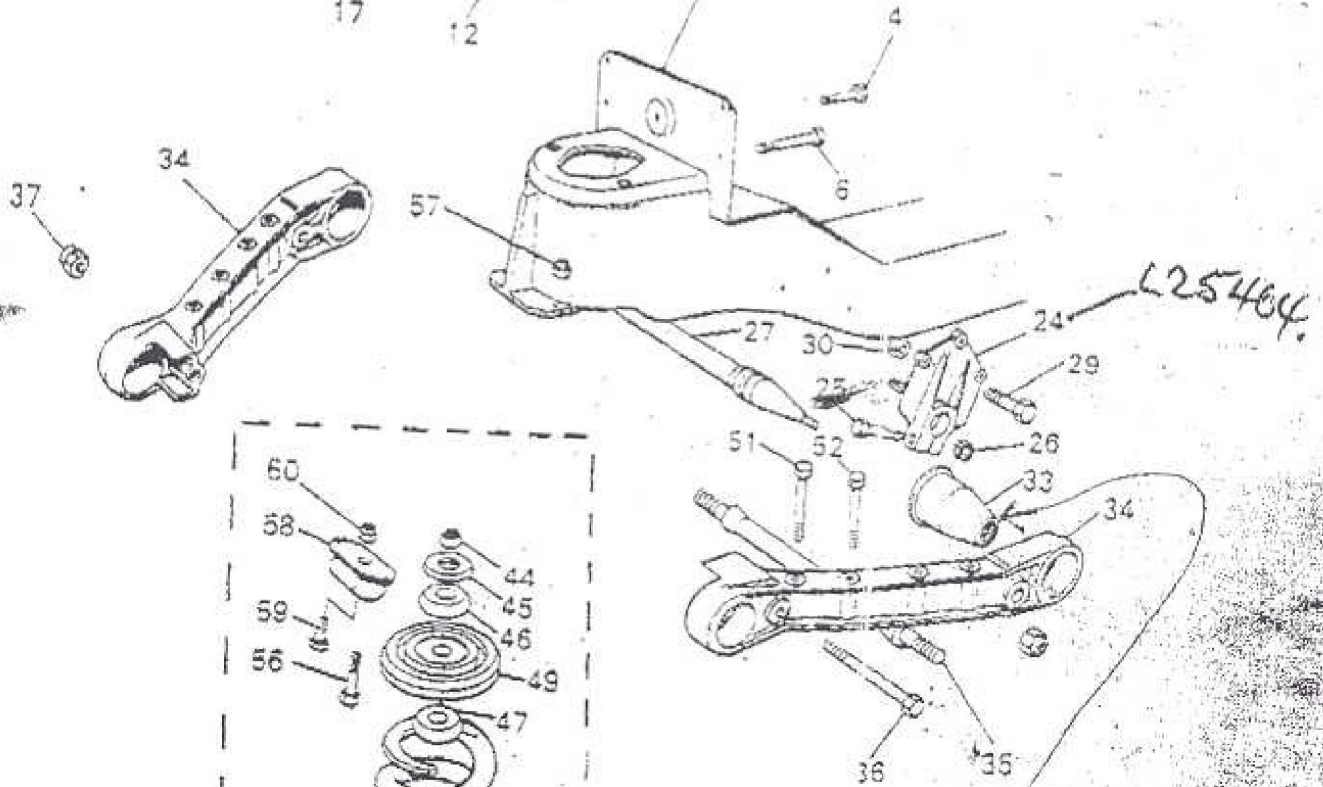
REFERENCE ONLY

ITEM	MAN. REF.	PART NUMBER	A/D	ASSEMBLY - A	DETAIL - D	QTY.	REMARKS	ISSUE
				DESCRIPTION				
1		3069L-221	A	Front Suspension and Box Member		1	7/32" Thick Member	
		3069L-184	A	Bracket & Pin - Upper Wishbone		2		
2	AEC	L25403	D	Bracket		1		
3	AEC	L10433	D	Fulcrum Pin		1		
4		21461-262	D	Bolt - Locating		2		
5		21668-125	D	Nut - Locating Bolt		4		
6		21461-265	D	Bolt - Locating		2	AEC 43-194	
7		223/30704	D	Bolt		2	AEC 90-335	
		3069L-160	A	Wishbone Arm & Bushes - Upper				
8	AEC	L17101	D	Wishbone Arm		2		
9	AEC	25803	D	Bush		4		
10	AEC	L17302	D	Inner Tie Bar		1		
11		21668-127	D	Locknut		2	AEC 90-337	
12		21461-335	D	Bolt		1	AEC 45-188	
13	AEC	Z9/44809	D	Spacer		1		
14		21668-127	D	Nut		1		
15	AEC	L16416	D	Upper Buffer Bracket		1		
16		21461-266	D	Bolt		4		
17		21668-125	D	Nut		4	AEC 90-335	
18	AEC	L16210	D	Rubber Buffer		1		
19		21366-399	D	Bolt - Rubber Buffer		2	AEC 121-335	
20		21668-123	D	Nut - Rubber Buffer		2	AEC 90-333	
21	AEC	Z7/30607	D	Bolt		1		
22		21668-123	D	Nut		1		

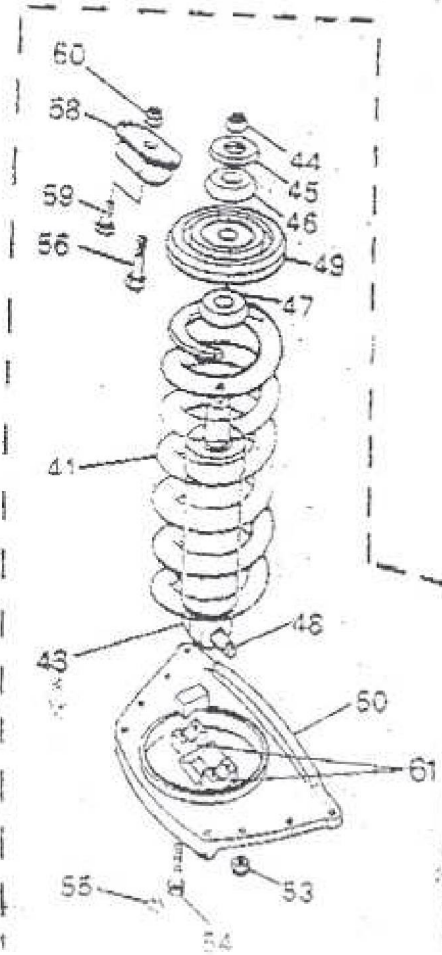




13-1174



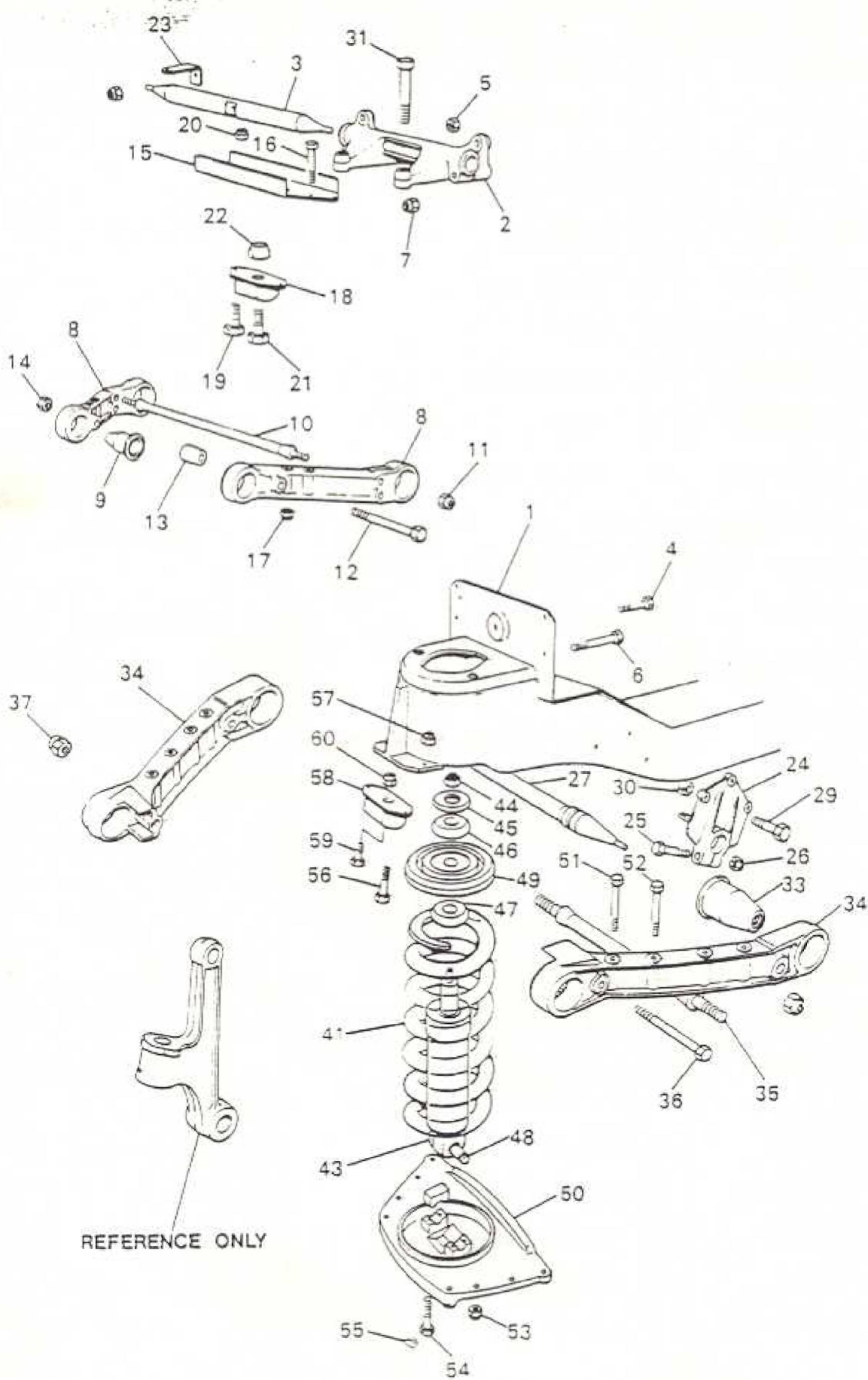
L25404



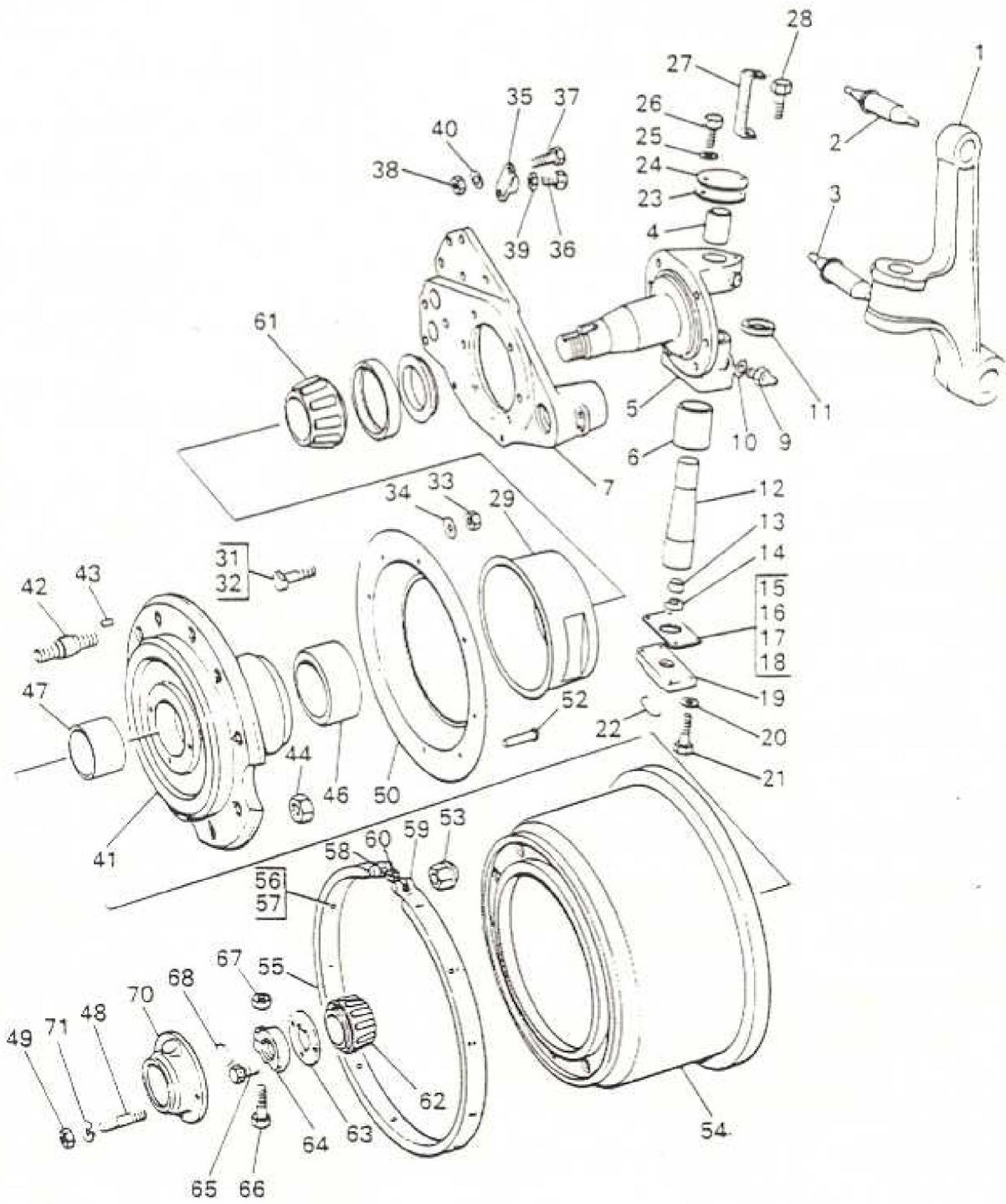
L25804
L110

3069803163

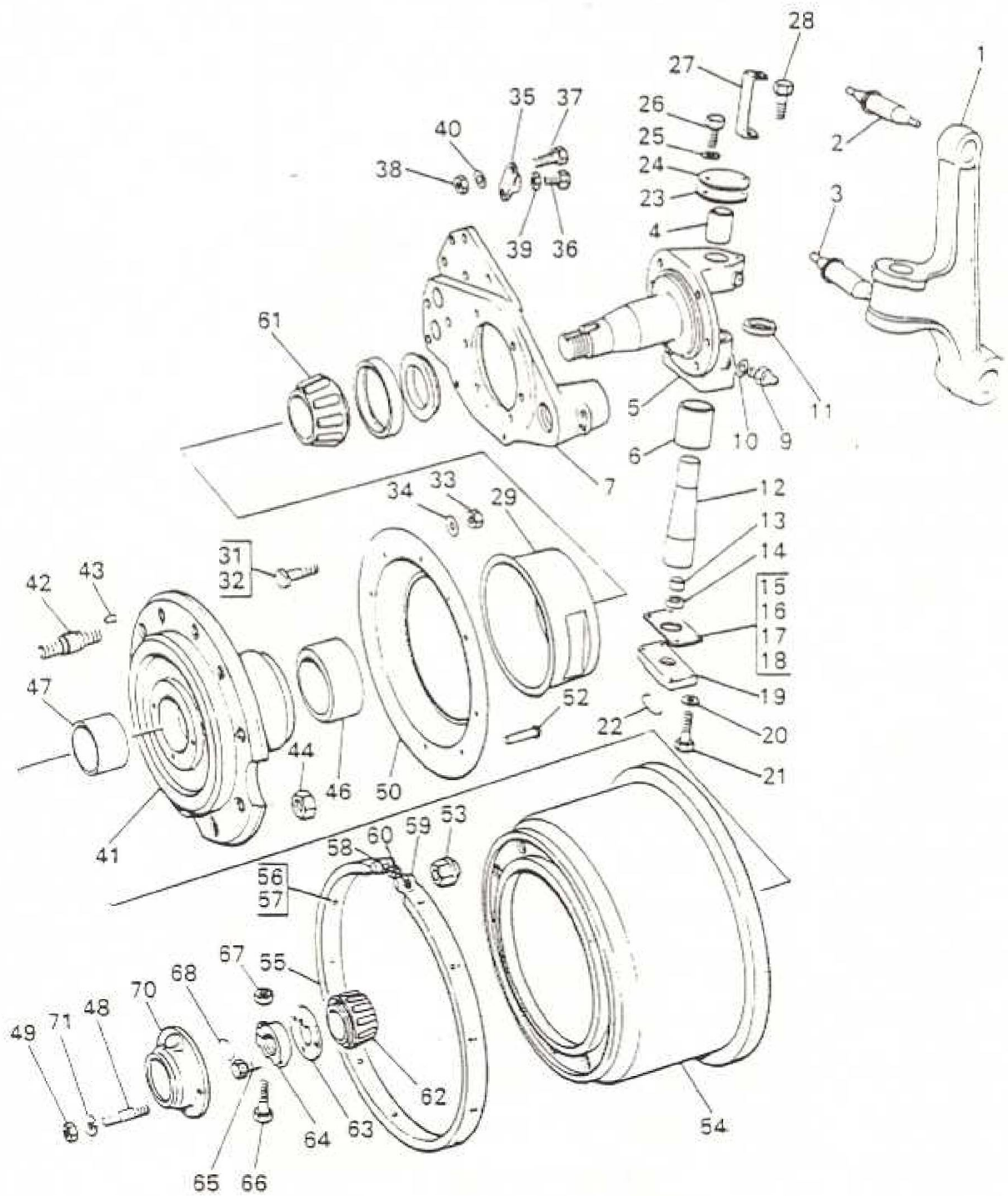
ITEM	MAN. REF.	PART NUMBER	A/D	ASSEMBLY - A	DETAIL - D	QTY.	REMARKS	ISSUE
				DESCRIPTION				
23	AEC	G16936	D		Hose Bracket - LH	1		
*		G16935	D		Hose Bracket - RH	1		
		3969L-185	A		Bracket & Pin - Lower Wishbone			
24	AEC	L25404	D		Bracket	2		
25		21461-325	D		Clamp Bolt	2		
26		21668-125	D		Nut	2		
27	AEC	L10434	D		Fulcrum Pin	1		
28		21668-125	D		Nut	20	AEC 90-335	
29		21461-325	D		Clamp Bolt	4	AEC 43-195	
30		21668-125	D		Nut	4	AEC 90-335	
31	AEC	L6403	A		Bolt Assembly	4		
32	AEC	L6404	A		Bolt Assembly	4	Use up AEC L6401	
		3069L-159	A		Lower Wishbone Arm & Bushes	4		
33	AEC	L25804	D		Bush ✓ was L0302 MA	2		
34	AEC	L17106	D		Wishbone Arm	1		
35	AEC	L17301	D		Inner Tie Bar	2		
36		21461-389	D		Bolt - Tie Bar	2	AEC 46-148	
37		21668-128	D		Nut - Tie Bar Bolt	2	AEC 90-336	
38		5091-110	D		Gaiter Bearing	8		
39	AEC	Z3/10295	D		Outer Ring Dowl	2		
40	AEC	L5303	D		Upper Bracket & Spring Damper	2	Use up L5302 with SA7 or 9	
41	AEC	L17202	D		Front Spring	2	Matched Sets	
42		21461-261	D		Setscrw - Upper Bracket	4		
43		SA25	A		Shock Absorber	2	Alt. SA31	
43		SA31	A		Shock Absorber	2	Alt. SA25	



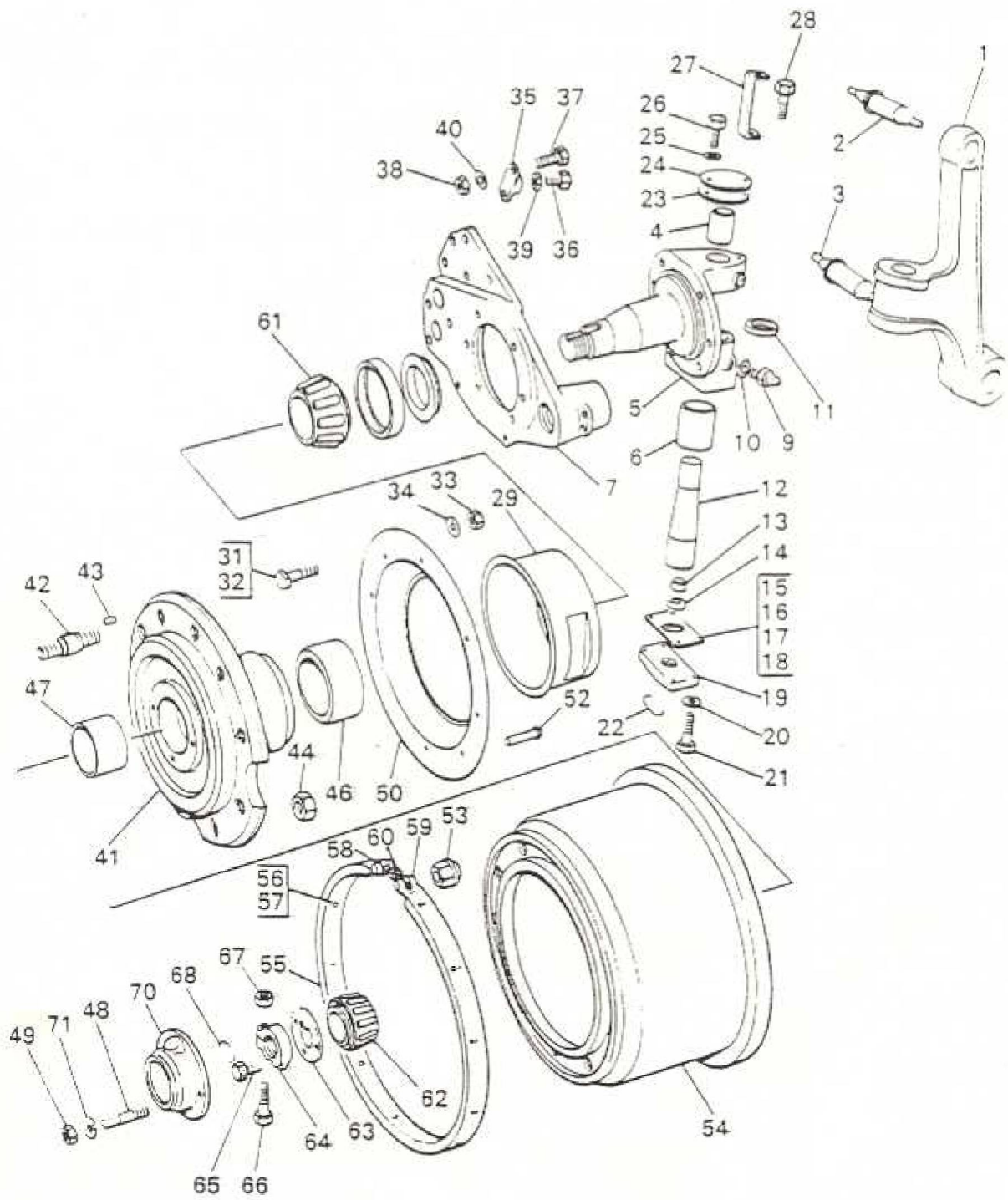
ITEM	MAN. REF.	PART NUMBER	A/D	ASSEMBLY - A	DETAIL - D	QTY.	REMARKS	ISSUE
				DESCRIPTION				
44		21668-125	D	Nut		A/R	(Ref. only for SA7	
45	AEC	Z6/30688	D	Washer		A/R	(AEC 90-365 or SA9	
46	APY	AT15-344	D	Rubber Bush		8		
47	NWB	8620	D	Rubber Bush		A/R	Use with SA7	
48	AEC	Z1/47083	D	Pin		4	Ref. to A/Advice L.360	
	AEC	L5304	A	Spring Plate & Cap Lower		2	Use up with SA31 or 33	
49	AEC	L17209	D	Spring Plate		1		
50		L17210	D	Cap		2		
51	AEC	Z23/30749	D	Bolt		4		
		3069L.279	A	Spring Plate & Cap Lower		2	Alt. to L.5304	
49	AEC	L17209	D	Spring Plate		1		
50	AEC	3069L278	D	Cap		2		
51	AEC	Z23/30704	D	Bolt		4		
52		21461-268	D	Bolt - Cap		12	AEC 43-202	
53		21668-125	D	Nut		16	AEC 90-365	
54		21461-330	D	Bolt		4	AEC 43-208	
55		11411-105	D	Locking Wire		A/R	AEC 219-25	
56		21366-399	D	Bolt - Buffer		4		
57		21668-123	D	Nut - Buffer		4	AEC 90-333	
58	AEC	L46210	D	Rubber Buffer		1		
59	AEC	Z7/30607	D	Bolt		1		
60		21668-123	D	Nut		1		
		Non Standard Parts						
		3069L268	D	Bush - Fulcrum Pin Bracket			Alt. ADV FA 1022	



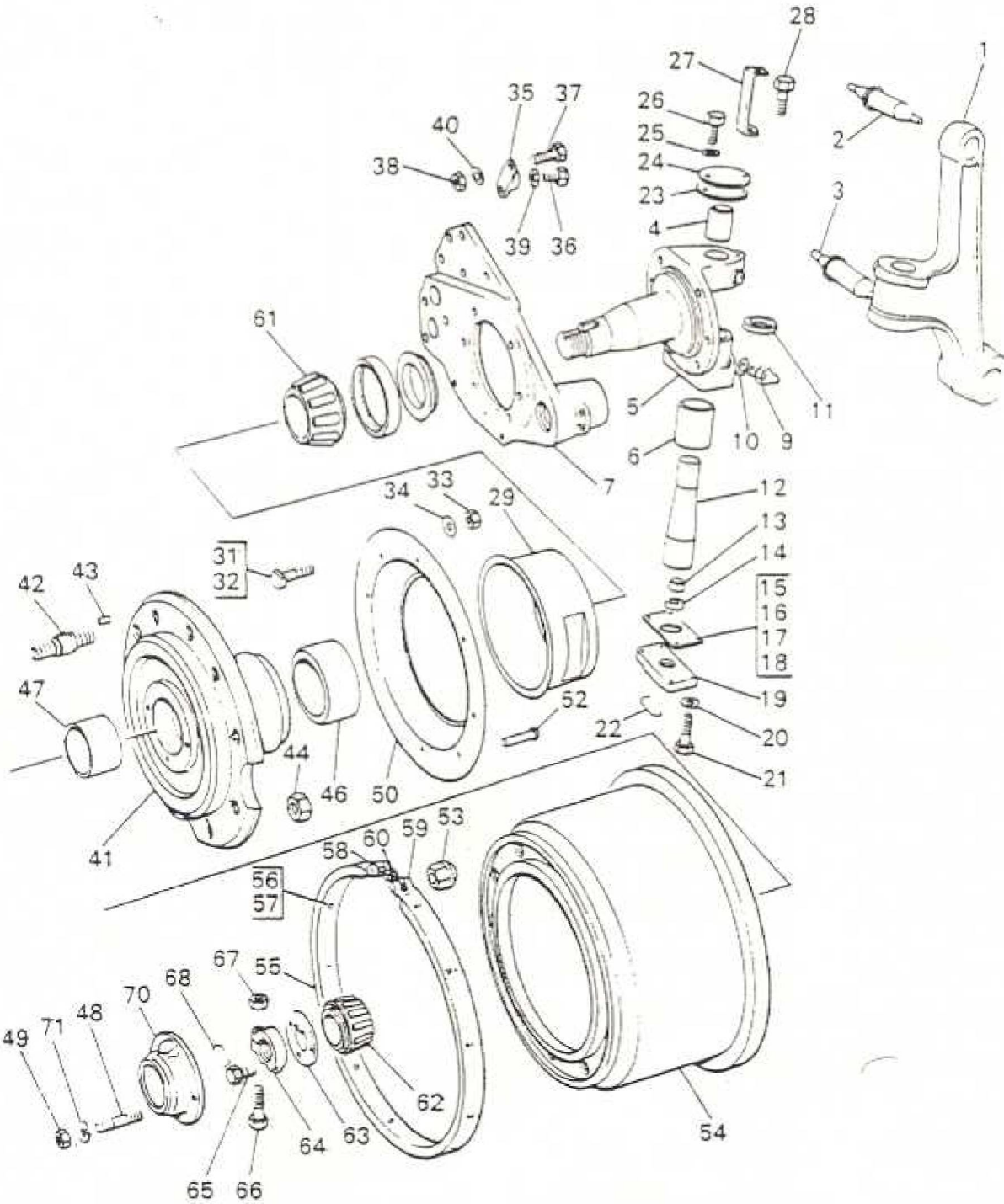
ITEM	MAN. REF.	PART NUMBER	A/D	ASSEMBLY - A	DETAIL - D	QTY.	REMARKS	ISSUE
				DESCRIPTION				
		3069L-197	A	King Post, Swivel, Hub and Drum RH		1	FA 48	
		3069L-198	A	King Post, Swivel, Hub and Drum LH		1	FA 48	
	AEC	L4902	A	King Post and Swivel Pins		1		
1	AEC	L17103	D	King Post		1		
2	AEC	L10431	D	Pivot Pin - Upper		1		
3	AEC	L10432	D	Pivot Pin - Lower		1		
	AEC	L2/0168	A	Axle Swivel and Bushes RH		1		
	AEC	L2/0169	A	Axle Swivel and Bushes LH		1		
4	AEC	Z3/10271	D	Bush - Top		1		
5	AEC	L1/10229	D	Axle Swivel RH		1		
5	AEC	L1/10230	D	Axle Swivel LH		1		
6	AEC	Z3/10272	D	Bush - Bottom		1		
		3069L-158	A	Brake Carrier and Stud RH		1	Alt. 3069L-145 use with AEC L20447	
		3069L-157	A	Brake Carrier and Stud LH		1	Alt. 3069L-147 use with AEC L20446	
7	AEC	L20161	D	Brake Carrier RH		1		
7	AEC	L20160	D	Brake Carrier LH		1		
8	AEC	Z8-30595	D	Stud		1		
9		Z3472-021	D	Lubricator - Cam Tunnel		1	AEC 81-312	
10	AEC	Z44937	D	Fibre Washer		1		
11		5091-31	D	Oil Seal - Swivel		1		
12	AEC	L10435	D	Swivel Pin - Swivel		1		
13	AEC	L15206	D	Thrust Pad - Swivel		1		
14	AEC	L15105	D	Thrust Pad - Bottom Cover		1		
15	AEC	Z2/46563	D	Shim 0.010 in.		A/R		



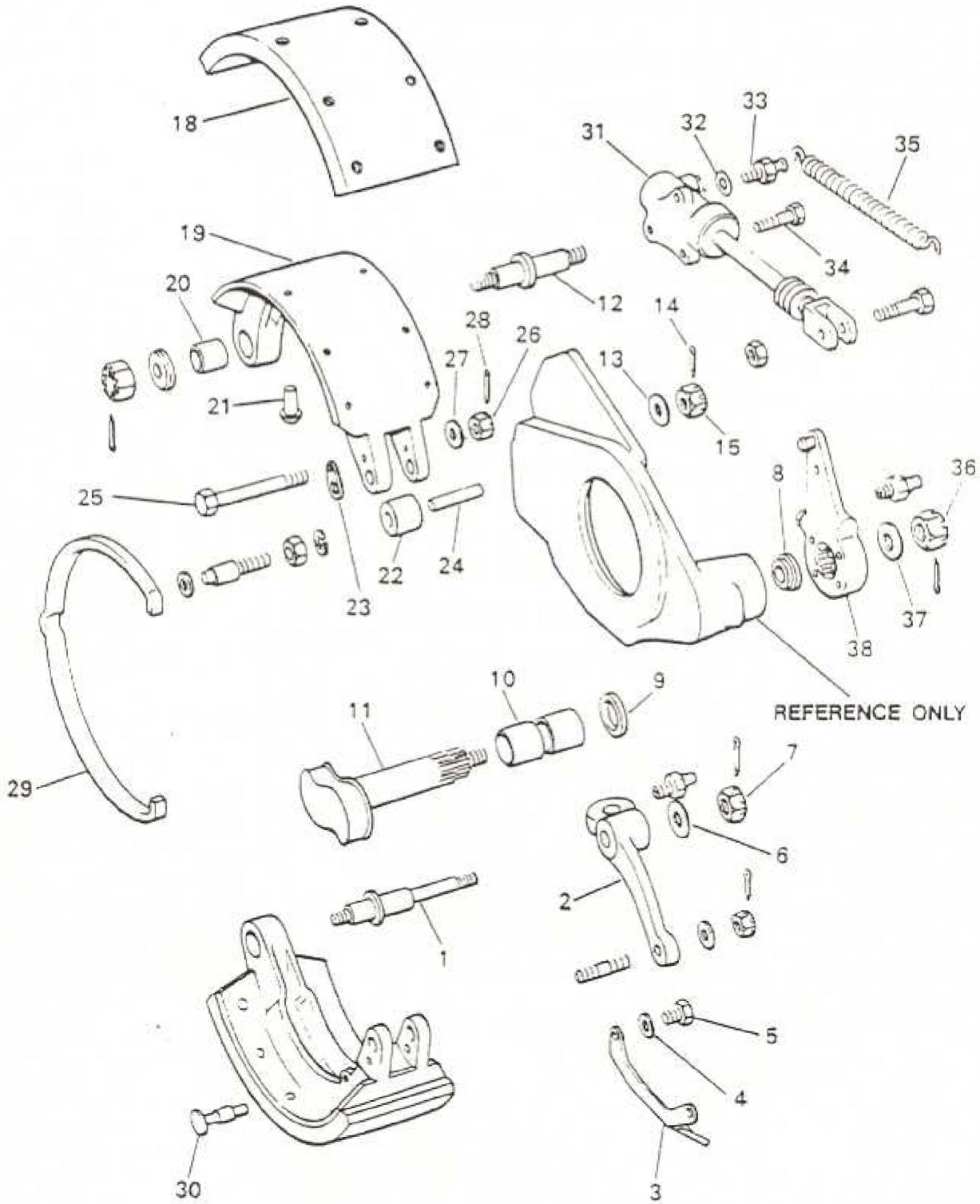
ITEM	MAN. REF.	PART NUMBER	ASSEMBLY - A		DETAIL - D		QTY.	REMARKS	ISSUE
			A/D	DESCRIPTION					
16	AEC	Z2/46564	D	Shim 0.004 in.			A/R		
17	AEC	Z2/46583	D	Shim 0.028 in.			A/R		
18	AEC	Z3/46571	D	Shim 0.060 in.			A/R		
19	AEC	L31704	D	Cover - Bottom Swivel		1		Use up AEC L31702	
20		21131-343	D	Washer - Bottom Cover		4		AEC 134-8	
21	AEC	Z21/30700	D	Setscrew - Bottom Cover		4			
22		11411-105	D	Locking Wire - Setscrew		A/R		AEC 219-25	
	AEC	L6101	A	Top Cover and Hose Bracket RH and LH		1			
23	AEC	A4/19414	D	Joint - Top Cover		1			
24	AEC	L21702	D	Cover Plate		1			
25		21137-569	D	Washer - Top Cover		2		AEC 135-93	
26		21366-426	D	Setscrew - Top Cover		1		AEC 121-323	
27	AEC	G16934	D	Bracket - Plate		1			
28		21366-386	D	Setscrew - Top Cover		1		AEC 121-322	
29	AEC	L32014	D	Inner Hub Shield		1			
30	AEC	Z43953	D	Joint Hub Shield		1			
31	AEC	Z1/30712	D	Bolt - Brake Shoe Carrier		2			
32	AEC	Z1/30713	D	Bolt - Brake Shoe Carrier		2			
33		21621-105	D	Nut - Brake Shoe Carrier		4		AEC 85-36	
34		21137-576	D	Washer - Brake Shoe Carrier		6		AEC 135-96	
35	AEC	L22803	D	Axle Stop		1			
36	AEC	Z43752	D	Adjusting Screw - Axle Stop		1			
37	AEC	Z1/30713	D	Bolt - Axle Stop - Carrier		2		Use up Stock 24/30738	
38		21621-105	D	Nut - Axle Stop - Carrier		2		Use up Stock 23/32050	



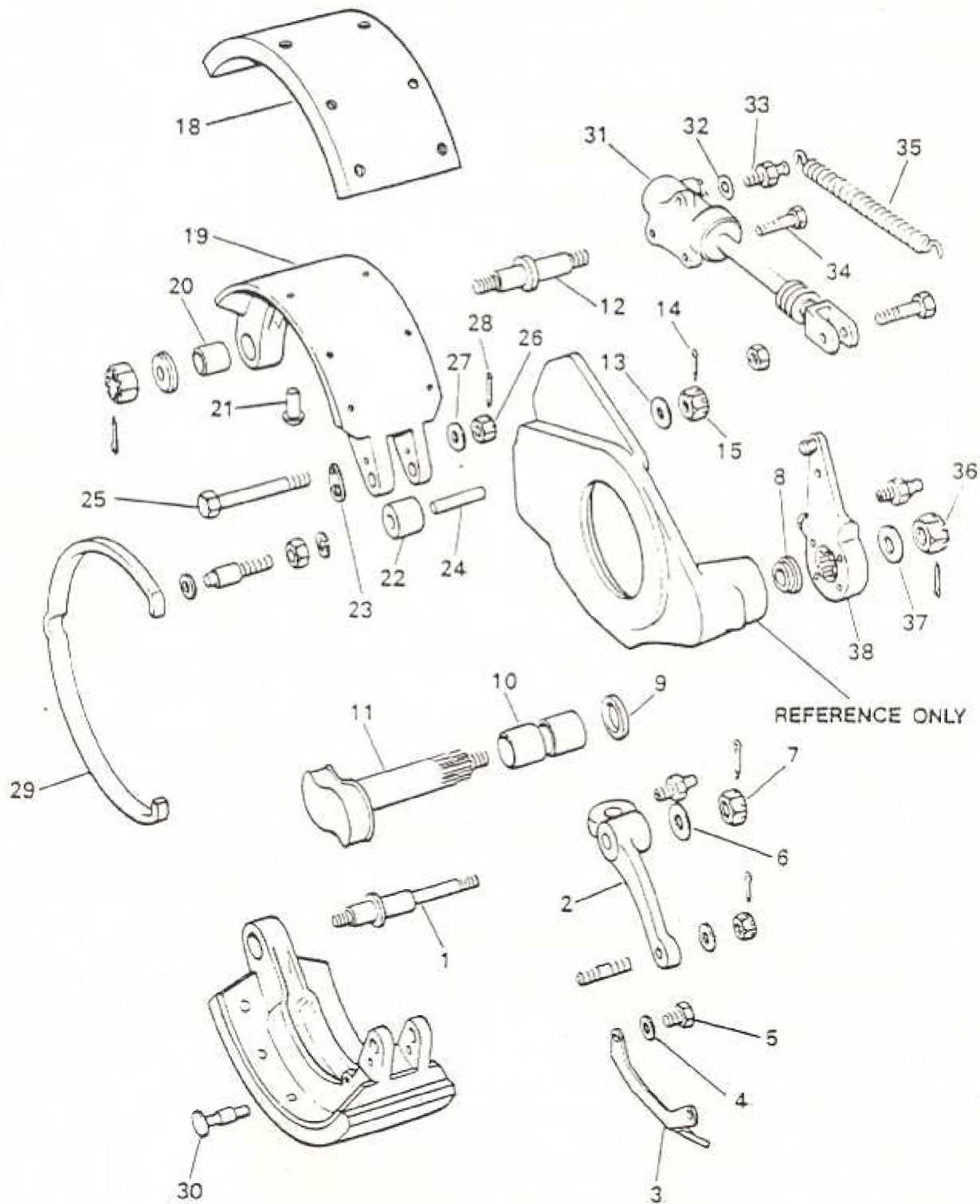
ITEM	MAN. REF.	PART NUMBER	ASSEMBLY = A DETAIL = D		QTY.	REMARKS	ISSUE
			A/D	DESCRIPTION			
39		21621-127	D	Lock Nut - Adjusting Screw	1		
40		21137-020	D	Washer - Bolt	2	Use with Bolt Z1/30713	
		3069L-135	A	Front Hub and Brake Drum RH	1		
		3069L-136	A	Front Hub and Brake Drum LH	1		
		3069L-137	A	Front Hub and Studs RH	1		
		3069L-138	A	Front Hub and Studs LH	1		
41	AEC	L14937	D	Front Hub	1		
42	AEC	L14692	D	Wheel Stud RH	10		
42	AEC	L14693	D	Wheel Stud LH	10		
43		21123-314	D	Dowel - Stud	10		
44	AEC	Z3-31955	D	Locknut - Stud	10	Use up Z31958	
45		3064F39	D	Lockwasher	5		
46		26174-653	D	Bearing Cup - Inboard	1		
47		26174-654	D	Bearing Cup - Outboard	1		
48		21222-118	D	Stud - Hub Cap	6		
49		21621-102	D	Nut - Stud	6	Use up AEC Z2-32047	
50	AEC	L21015	D	Inner Dust Cover	1		
51	AEC	L23402	D	Joint - Dust Cover	1		
52		21151-087	D	Rivet - Dust Cover	10		
53	AEC	L14536	D	Wheel Nut RH	10		
		3069L-139	A	Brake Drum and Anti Squeal Band	1		
54	AEC	L20036	D	Brake Drum	1		
	AEC	F5608	A	Anti Squeal Band	1		
	AEC	F.5609	A	Anti Squeal Band and Pads	1	F50509	



ITEM	MAN. REF.	PART NUMBER	A/D	ASSEMBLY = A	DETAIL = D	QTY.	REMARKS	ISSUE
				DESCRIPTION				
55		18726-136	D		Liner - Band	2	F50707	
56		21156-023	D		Rivet - Liner Band	8		
57		21156-424	D		Rivet - Liner Band	8		
58	AEC	F.50702	D		Trunnion	1		
59	AEC	F.50703	D		Trunnion	1		
60	AEC	F.50801	D		Turnbuckle - Band	1		
61		26174-162	D		Cone Cage & Rollers - Inner	1		
62		26174-151	D		Cone Cage & Rollers - Outer	1		
63	AEC	L16506	D		Lockwasher - Axle Nut	1		
64	AEC	L16001	D		Axle Nut RH	1		
64	AEC	L16002	D		Axle Nut LH	1		
65	AEC	Z43408	D		Locking Screw LH	1		
66	AEC	Z1-430711	D		Clamp Bolt - Axle Nut	1		
67		26121-143	D		Nut - Bolt - Axle Nut	1		
68		11411-105	D		Locking Wire - Axle Nut	A/R		
69	AEC	L16101	D		Joint - Hub Cap	1		
70	AEC	L6304	D		Hub Cap	1		
71		21137-158	D		Washer-Setscrew-Cap	6	AEC 135-3	
		23472-409	D		Lubricator - Swivel	1	AEC 81-963	
		23472-021	D		Lubricator - Swivel	1	AEC 81-312	
		23136-305	D		Fibre Washer - Swivel	2		



ITEM	MAN. REF.	PART NUMBER	A/D	ASSEMBLY - A	DETAIL - D	QTY.	REMARKS	ISSUE
				DESCRIPTION				
1	AEC	L20710	D	Pivot Pin - Long - Brake Shoe		1		
2	AEC	L1/10306	D	Steering Arm LH		1		
2	AEC	L1/10307	D	Steering Lever RH		1		
3	AEC	L32022	D	Oil Drip Shield		1		
3	AEC	L32021	D	Oil Drip Shield LH		1		
4		21137-569	D	Washer - Shield		2	AEC 135-93	
5		21366-384	D	Setscrew - Shield		2	AEC 121-321	
6		21131-355	D	Washer		1	AC 134-9	
7		21661-047	D	Nut - Pin & Steering Arm		1	AEC 86-99	
8		5091-24	D	Oil Seal - Camshaft		1	Alt. L20446 use with 3069L-147	
9	AEC	22/43242	D	Felt Washer		1		
10		26176-912	D	Bearing (AEC 18-117) RH		2	Not required with 3069L-145	
10		26176-912	D	Bearing (AEC 18-117) LH		2	Not required with 3069L-147	
11	AEC	L20453	D	Brake Camshaft RH		1	(Alt. L20447/6 use with	
11	AEC	L20452	D	Brake Camshaft LH		1	(3069L145/147	
12	AEC	L20711	D	Pivot Pin - Short - Brake Shoe		1		
13		21131-343	D	Washer - Short		1	AEC 134-8	
14		21122-154	D	Split Pin - Short LH		1	AEC 100-16	
15		21661-046	D	Nut - Pivot Pin - Short - Brake Shoe		1	AEC 86-98	
16	AEC	L27607	D	Anchor Pin		1		
17		21122-154	D	Split Pin		1		
*		23472-021	D	Lubricator - Steering Lever		1		
*	AEC	244937	D	Fibre Washer - Lubricator		1		
	AEC	L1-1709	A	Brake Shoe RH Upper		1		
	AEC	L1-1707	A	Brake Shoe LH Upper		1		
	AEC	L1-1710	A	Brake Shoe RH Lower		1		
	AEC	L1-1708	A	Brake Shoe LH Lower		1		



ITEM	MAN. REF.	PART NUMBER	ASSEMBLY - A	DETAIL - D	QTY.	REMARKS	ISSUE
			A/D	DESCRIPTION			
18			D	Liner - Shoe	1	See LT chart 0299	
19	AEC	L20229	D	Brake Shoe	1	Use up L20226	
20	AEC	L20503	D	Pivot Bush	1		
21		3080Z114	D	Rivet - Shoe	12		
22	AEC	F10901	D	Roller	1		
	AEC	F9501	A	Plate & Pin	1		
23	AEC	F12901	D	Plate	1		
24	AEC	F11701	D	Pin	1		
25		21425-019	D	Bolt - Plate & Pin	1		
26		21621-141	D	Nut - Plate & Pin	1		
27		21131-323	D	Washer - Plate & Pin	1		
28		21122-007	D	Split Pin - Plate & Pin	1		
29	AEC	Z45299	D	Pull-off Spring - Brake Shoes	1		
30	AEC	L21202	D	Anchor Pin - P/O Spring	2		
31		306501703	A	Brake Cylinder - Clayton RH	1		
31		306501704	A	Brake Cylinder - Clayton LH	1		
31		3065G1721	A	Brake Cylinder - Lockheed RH	1	Alt. to 306501703	
31		3065G1722	A	Brake Cylinder - Lockheed LH	1	Alt. to 306501704	
32		21137-574	D	Washer - Setscrew	3	AEC 135-95	
33	AEC	Z19-30712	D	Setscrew - Brake Cylinder	1		
34		21461-244	D	Setscrew - Brake Cylinder	2	AEC 42-181	
35	AEC	Z1-45208	D	P/O Spring - Cam Lever Shoes	1		
36		21661-047	D	Nut - Camshaft Lever	1		
37		21131-355	D	Washer - Camshaft Lever	1		
38	AEC	G5621	A	Brake Camshaft Lever RH	1		
38	AEC	G5622	A	Brake Camshaft Lever LH	1		
	AEC	5008-89	A	R.P. Adjuster & Worm Spindle RH	1		
	AEC	5008-90	A	R.P. Adjuster & Worm Spindle LH	1		