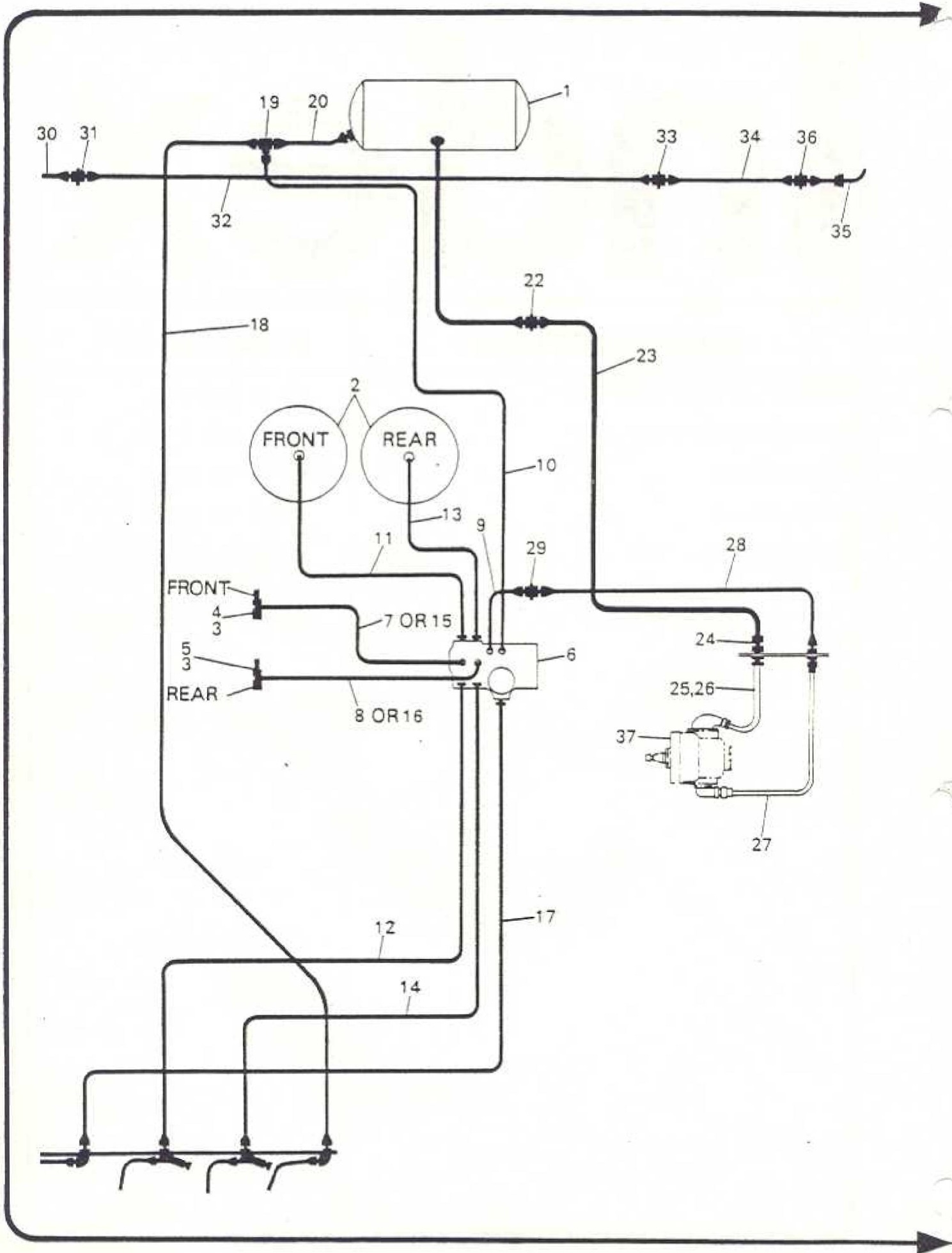


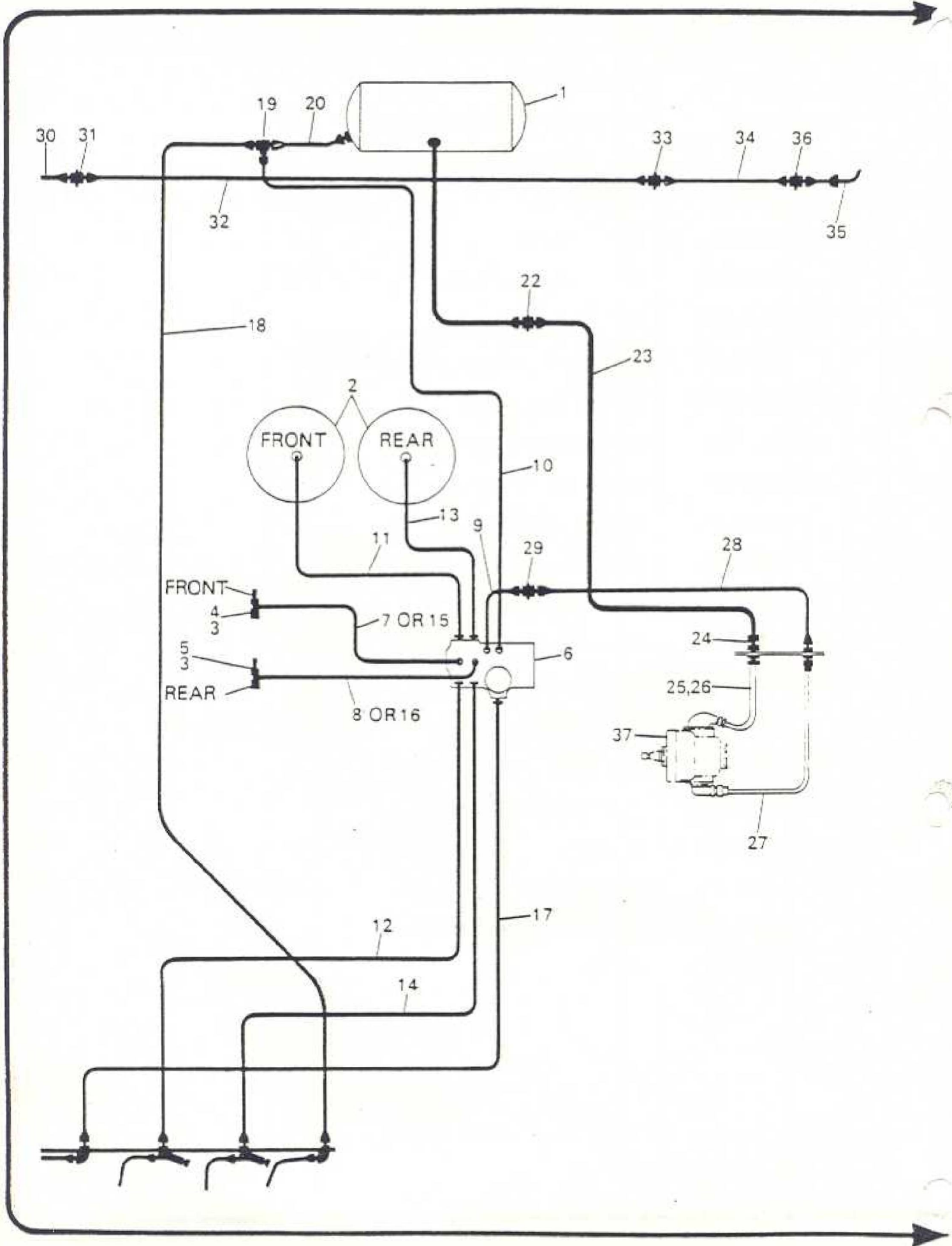
A1

Index

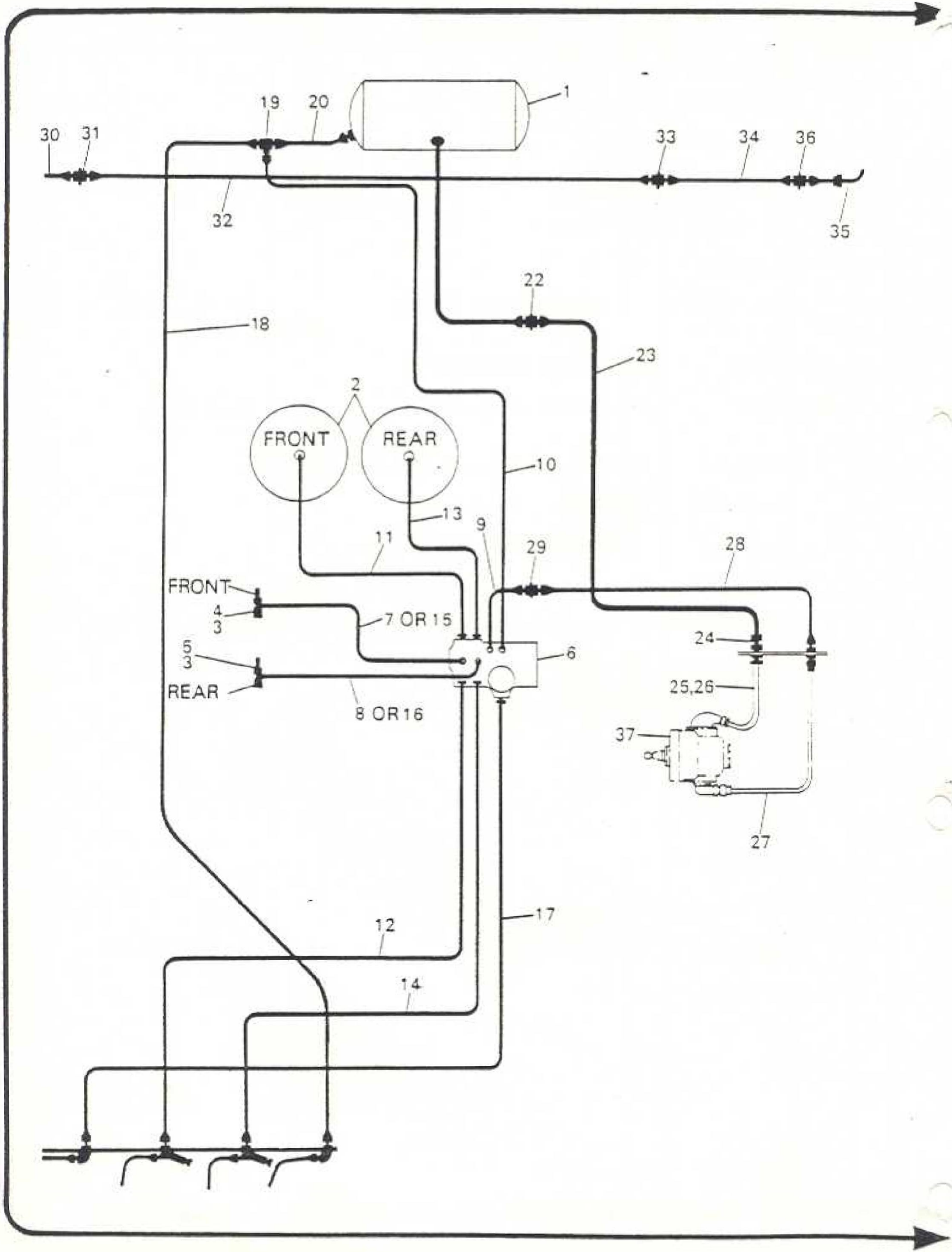
DESCRIPTION	FRAME NO.
BRAKES (CENTRE CLAYTON)	A2 to B6 (M905)
BRAKES (REAR END)	B9 to B10 (M905)
FOOT BRAKE	C1 to C4 (M905)
HAND BRAKE	D1 to D7 (M905)
CHASSIS (FRONT END)	E1 to E4 (M905)



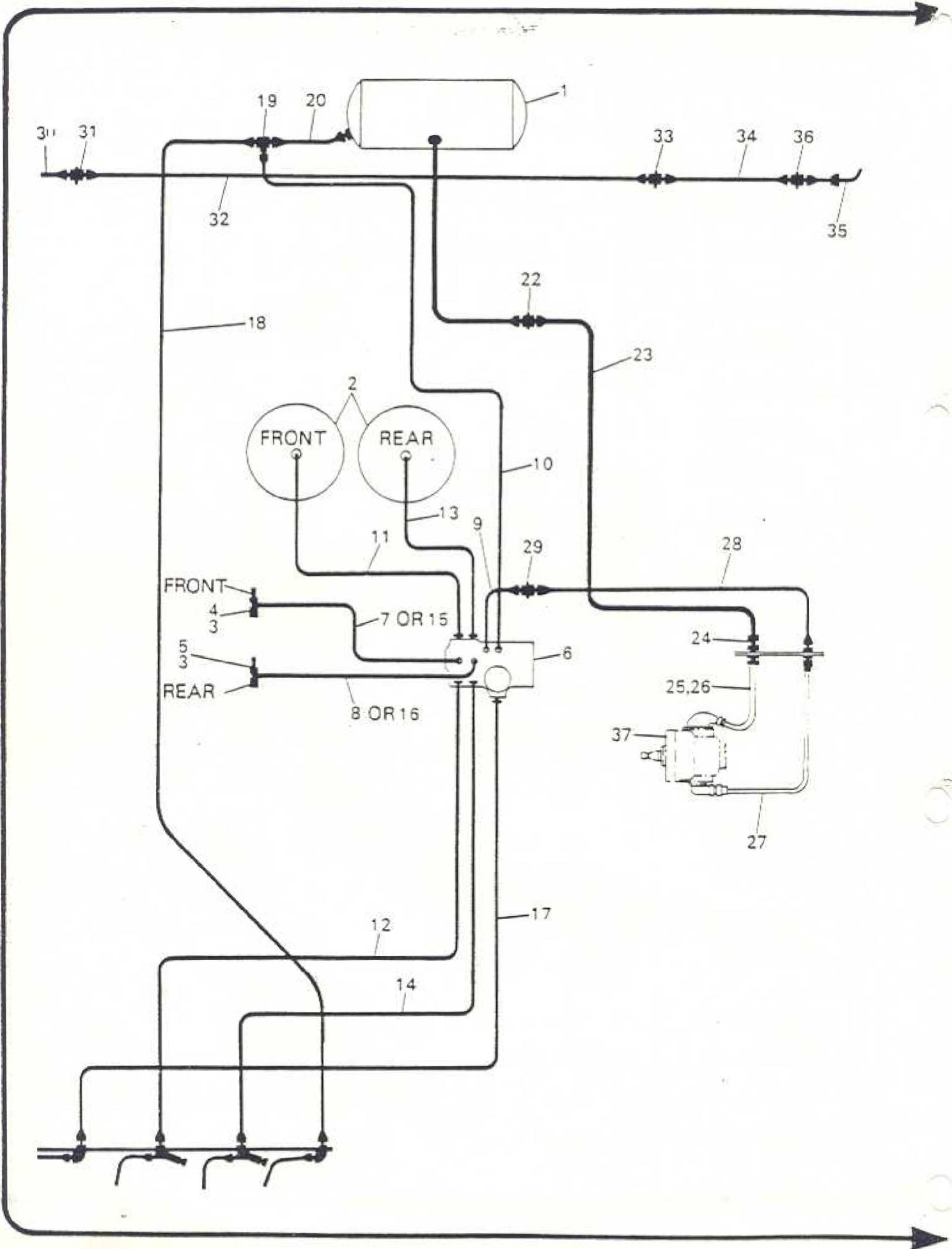
ITEM	MAN. REF.	PART NUMBER	A/D	ASSEMBLY = A	DETAIL = D	QTY	REMARKS
				DESCRIPTION			
1		G6617	A	Brake Fluid Supply Tank		1	
*	AEC	G9036	A	Support Bracket & Strap		2	
*	AEC	G3-22722	D	Support Bracket		1	
*	AEC	G9033	A	Strap		1	
*	AEC	G27705	D	Strap		1	
*		21155-022	D	Rivet - Strap		5	
*	AEC	V2-36039	D	Clamp Plate		1	
*		21151-026	D	Rivet - Plate to Strap		8	
*	AEC	Z19-30798	D	Tee Bolt - Tank		2	
*	AEC	Z1-47041	D	Trunnion - Tee Bolt		2	
*	AEC	Z44870	D	Distance Piece		2	
*		21668-125	D	Nut - Eyebolt		2	
*		499-4417	D	P.V.C. Packing - Tank		2	
2		3065G-1700	A	Accumulator		2	
*	AEC	G9038	A	Bracket - Accumulator		2	
*	AEC	G3/22760	D	Bracket		1	
*		21716-063	D	Insert		4	AEC 5099-32
*	AEC	G3/22761	D	Cap		2	
*	AEC	Z19/30782	D	Setscrew for Cap		8	
*		21131-323	D	Washer		8	
*		11411-105	D	Lockwire		A/R	
*		21466-206	D	Bolt - Bracket to Body		8	
*		21668-123	D	Nut		8	Body items



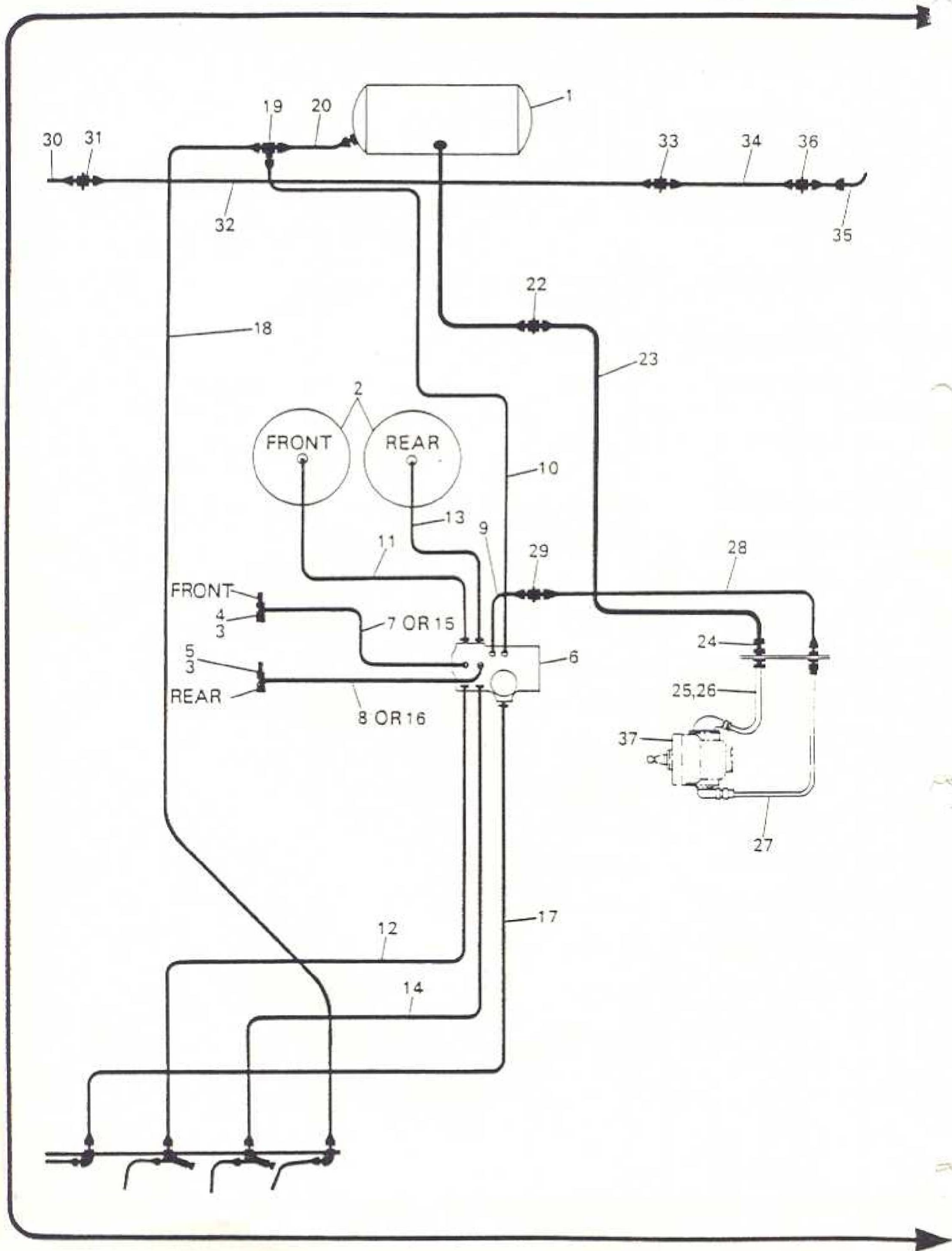
ITEM	MAN. REF.	PART NUMBER	ASSEMBLY - A DETAIL - D		QTY.	REMARKS	10/881
			A/D	DESCRIPTION			
*		21183-032	D	Washer	8		
*		3065G-1701	A	Warning Switch	2		
*		21461-209	D	Bolt	2		
*		21461-370	D	Bolt	1		
*		21131-323	D	Washer	4		
*		21668-121	D	Nut	3		
4		3065G2107	A	Warning Switch - Front	1	Alt. to 3065G-1701	
6	CLD	730021	A	Pressure Regulator	1		
*	AEC	Z2803	A	Bracket - Regulator	1	Fixed Bolts, Body Items	
*		21461-217	D	Setscrew - Reg. to Bracket	3		
*		21131-327	D	Washer - Reg. Bolts	3		
*		21137-569	D	Washer - Reg. Bolts	3		
*		30802-130	D	Adaptor Plate - Switch	1	Use with oa	
*		3065G2105	A	Pipe - Reg. to Switch, Front	1	Use with oa	
8		3065G2106	A	Pipe, Reg. to Switch, Rear	1	Use with oa	
9	AEC	Z1/2272	A	Pipe - Adaptor to Regulator	1		
*	AEC	Z34/40499	D	Pipe	1		
*		5012-108	D	Nut	1		
*		5117-30	D	Nut	1		
*		3105-179	D	Label	1	Use up 3103-57	
*	AEC	Z5/31383	D	Clip - Pipe	2		
*		21461-221	D	Bolt	1		
*		21668-132	D	Nut	1		



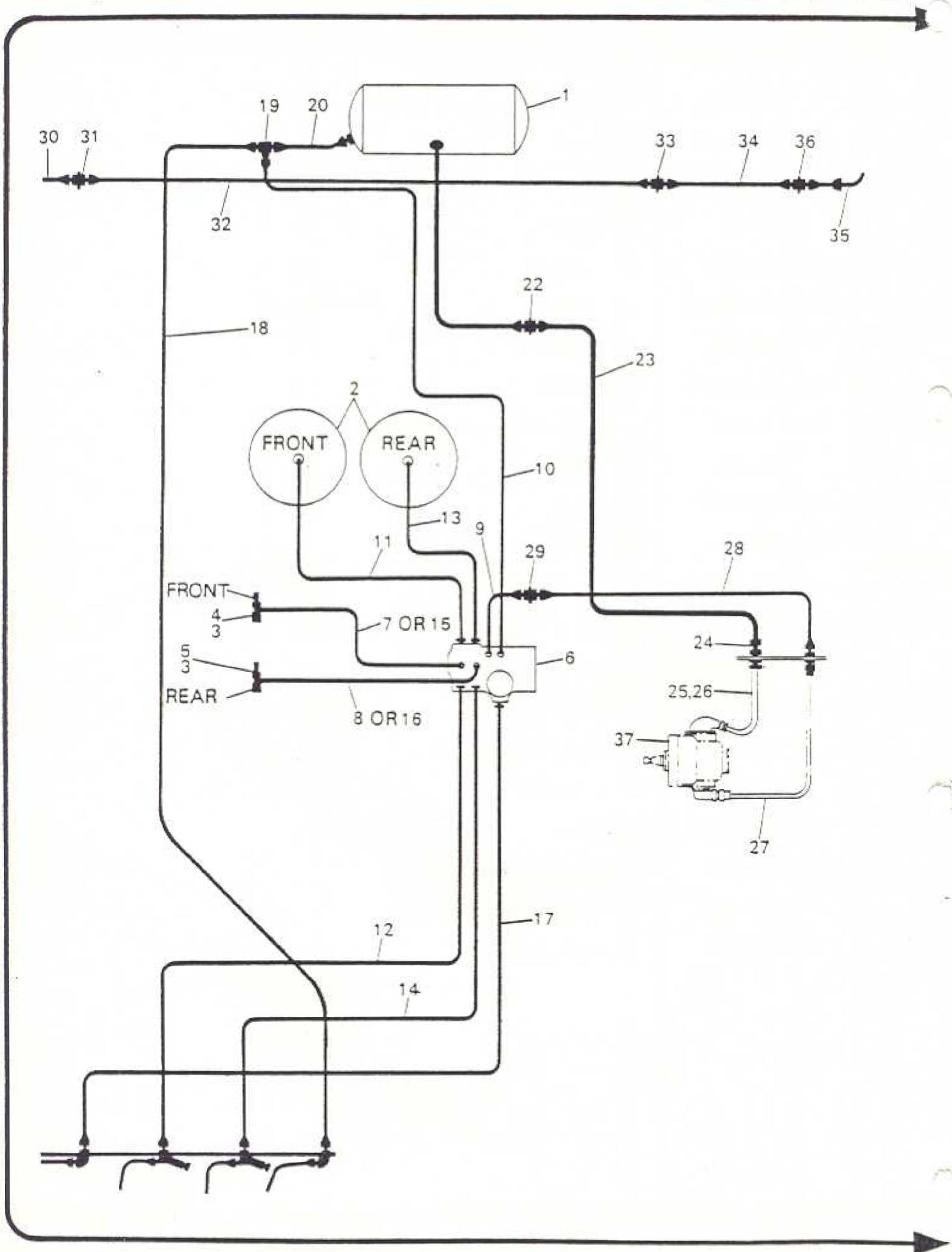
ITEM	MAN. REF.	PART NUMBER	ASSEMBLY - A		DETAIL - D		QTY.	REMARKS	ISSUE
			A/D	DESCRIPTION					
10	AEC	Z1/2273	A	Pipe - Regulator to Tee			1		
*	AEC	Z35/40400	D	Pipe			1		
*		5012-108	D	Nut			1	CLD FP10131	
*		5117-30	D	Nut			1	APC 31385	
*		3105-180	D	Label			1	Use up 3103-62	
11	AEC	Z1/2274	A	Pipe - Regulator to Front Acc.			1		
*	AEC	Z35/40401	D	Pipe			1		
*	AEC	5012-108	D	Nut			1	CLD FP10131	
*	AEC	5117-30	D	Nut			1	APC 31385	
*		3105-181	D	Label			1	Use up 3013-67	
*		21461-202	D	Bolt - Bracket to Reg.			3	Use with 30800-170	
12	AEC	Z1/2275	A	Pipe - Regulator to Check Point			1		
*	AEC	Z35/40402	D	Pipe			1		
*	AEC	Z5012/108	D	Nut			1	CLD FP10131	
*	AEC	5117-30	D	Nut			1	APC 31385	
*		3105-182	D	Label			1	Use up 3013-58	
13	AEC	Z1/2276	A	Pipe - Regulator to Rear Acc.			1		
*	AEC	Z35/40403	D	Pipe			1		
*	AEC	5012-108	D	Nut			1	CLD FP10131	
*	AEC	5117-30	D	Nut			1	APC 31385	
*		3105-183	D	Label			1	Use up 3103-60	
14	AEC	Z1/2277	A	Pipe - Regulator to Check Point			1		
*	AEC	Z35/40404	D	Pipe			1		
*	AEC	5012-108	D	Nut			1	CLD FP10131	
*	AEC	5117-30	D	Nut			1	APC 31385	
*		3105-155	D	Label			1	Use up 3103-61	



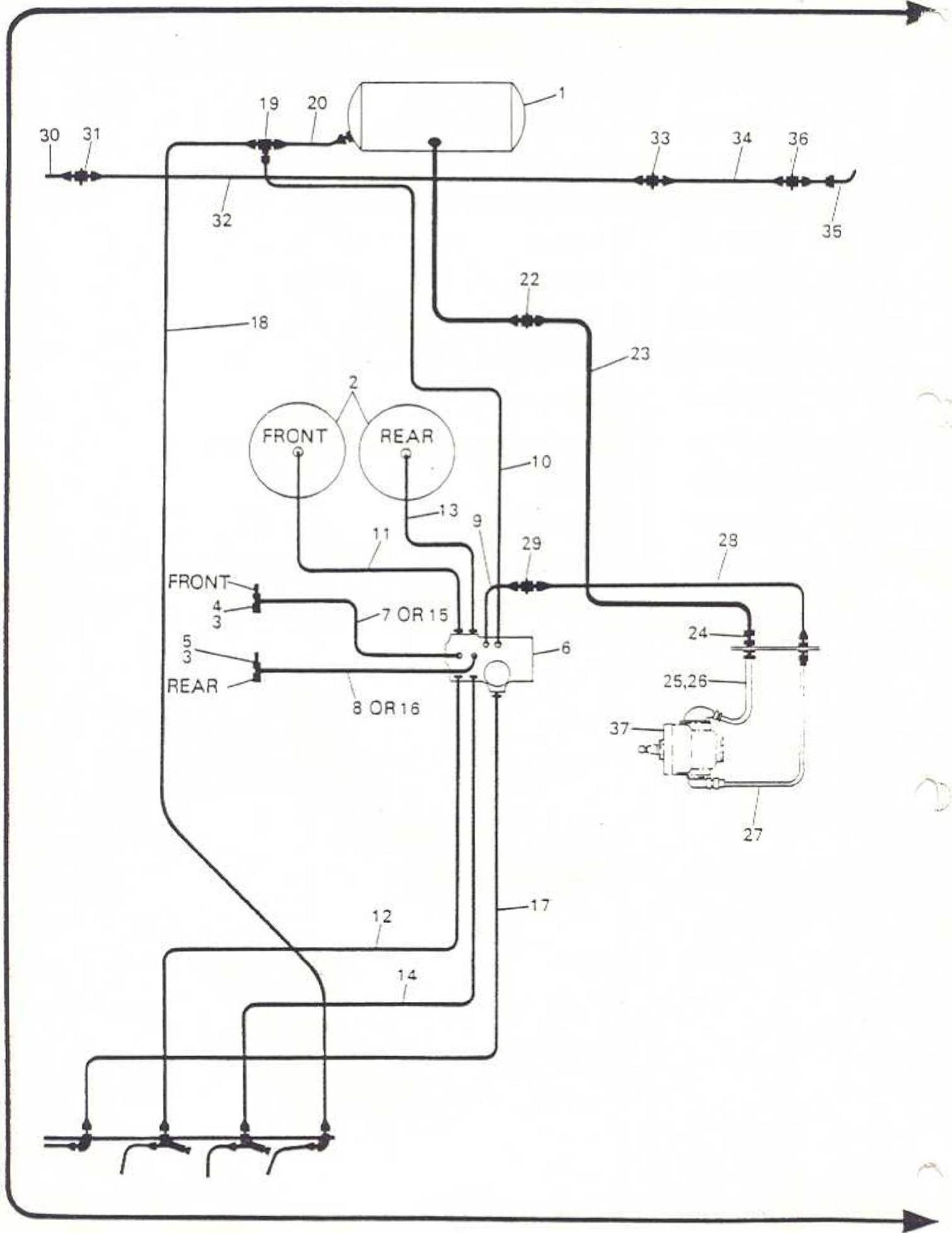
ITEM	MAN. REF.	PART NUMBER	A/D	ASSEMBLY - A	DETAIL - D	QTY	REMARKS	ISSUE
				DESCRIPTION				
15	AEC	Z1/2279	A	Pipe - Reg. to Front Warning Switch		1		
*	AEC	Z35/40406	D	Pipe		1		
*	CLD	FP10132	D	Nut		1	Re-bin AEC 5012-109	
*	CLD	SF986-1	D	Nut		1	Re-bin AEC 5012-113	
16	AEC	Z1/2280	A	Pipe - Reg. to Rear Warning Switch		1		
*	AEC	Z35/40407	D	Pipe		1		
*	CLD	FP10132	D	Nut		1	Re-bin AEC 5012-109	
*	CLD	SF986-1	D	Nut		1	Re-bin AEC 5012-113	
17	AEC	Z1/2278	A	Pipe - Reg. to Frame Elbow		1		
*	AEC	Z35/40405	D	Pipe		1		
*	AEC	5012-108	D	Nut		1	CLD FP10132	
*	AEC	5117-30	D	Nut		1	APC 31385	
*		3105-158	D	Label		1	Use up 3103-59	
18	AEC	Z1/2281	A	Pipe - Frame Elbow to Tee		1		
*	AEC	Z35/40408	D	Pipe		1		
*	AEC	5117-23	D	Nut		2		
*		3103-49	D	Label		1		
19	CLD	FP10093-1	D	Tee Piece		1		
20	AEC	Z1/2282	A	Pipe - Tee. to Supply Tank		1		
*	AEC	Z35/40409	D	Pipe		1		
*	AEC	5117-23	D	Nut		2		
*		3103-50	D	Label		1		



ITEM	MAN. REF.	PART NUMBER	A/D	ASSEMBLY = A	DETAIL = D	QTY	REMARKS	ISSUE
				DESCRIPTION				
*		21131-336	D	Washer - Clamp Bolt		2		
*		21461-231	D	Bolt - Bracket		8		
*		21668-123	D	Nut		8		
*	AEC	Z2-2212	A	Pipe - Tank to Adaptor		1		
*		175-22	D	Pipe		1		
*	AEC	G28407	D	Sleeve		2		
*	AEC	Z2/31990	D	Nut		2		
*		3103-47	D	Label		1		
22	AEC	G1-25195	D	Adaptor		1		
23	AEC	Z1-2213	A	Pipe - Adaptor to Adaptor		1		
*		175-22	D	Pipe		1		
*	AEC	Z2/31990	D	Nut		2		
*	AEC	G28407	D	Sleeve		2		
*		3085-879	D	Label		1		
*	AEC	Z5-31397	D	Clip - Pipe		2		
*	AEC	Z5-31385	D	Clip - Pipe		2		
*		21461-363	D	Bolt - Clip		1		
*		21461-225	D	Bolt - Clip		1		
*		21668-132	D	Nut - Clip		2		
*		21131-327	D	Washer		2		
*	AEC	Z6-44840	D	Distance Piece - Clip		1		
*		499-1424	D	P.V.C. Strip - Pipe Clip		A/R		
*	AEC	Z5-31383	D	Clip - Pipe		2	C.O.V. Acc. to Pump	

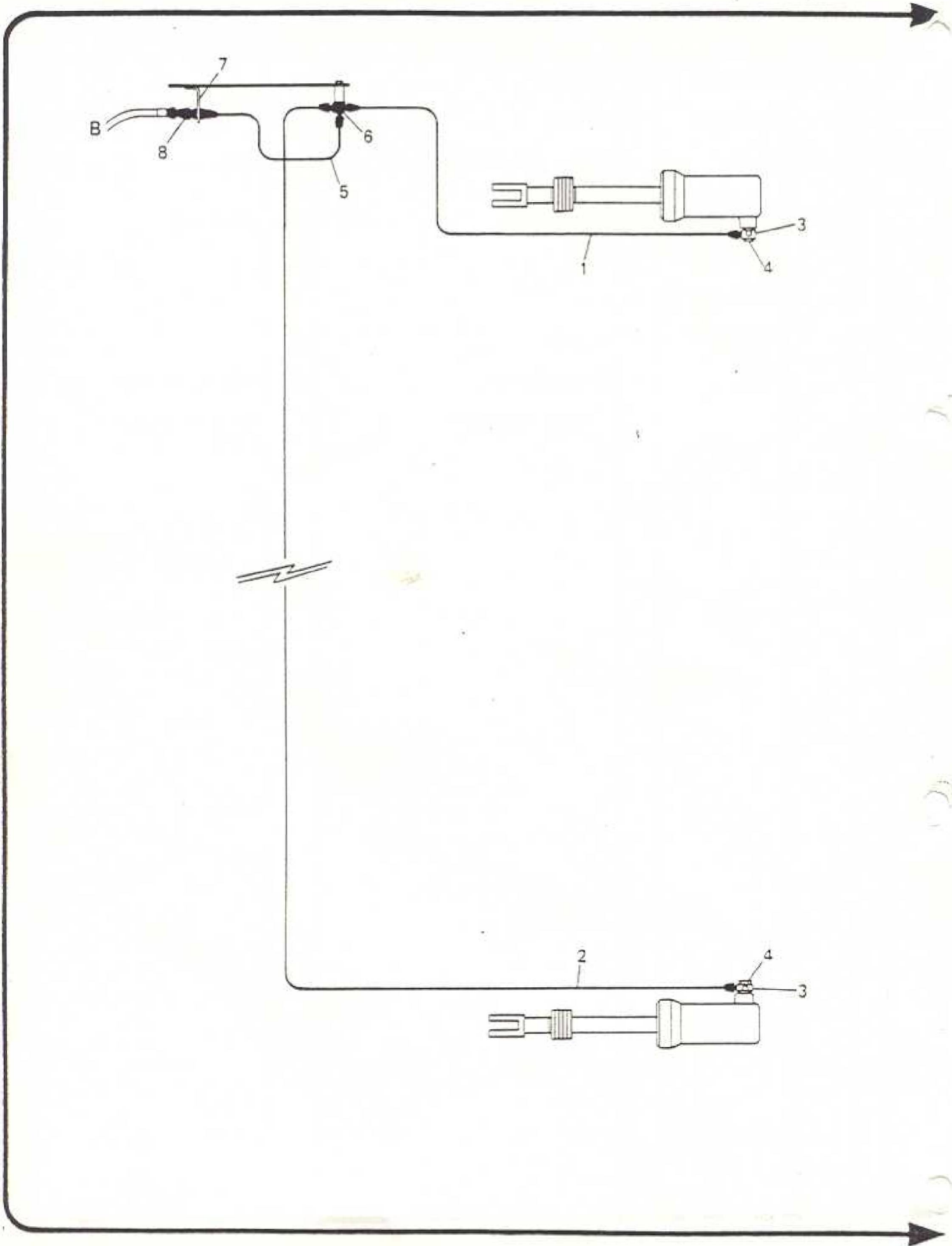


ITEM	MAN. REF.	PART NUMBER	A/D	ASSEMBLY - A	DETAIL - D	QTY.	REMARKS	ISSUE
				DESCRIPTION				
*	AEC	G16932.	D	Bracket - Pipe Clip		1		
*		21461-215	D	Bolt - Bracket		2		
*		21668-132	D	Nut - Bolt		2		
24	AEC	G1-25196	D	Adaptor (Hose) - Body		1		
*		21661-038	D	Locknut		1		
*		21137-520	D	Washer		1		
25		3065G-2141	D	Hose Adaptor to Plessey Pump		1	Alt.	
26	APC	CM1072/E/13	D	Hose Adaptor to Plessey Pump		1	Alt.	
*		23712-404	D	Clip - Hose		2		
27	APC	KL52411	D	Hose - Pump to Cross Bar		1	Body	
*	APC	KL44523	D	Washer		1		
*		21661-036	D	Locknut		1		
*		21137-578	D	Washer		1	Use up 21137-518	
28	AEC	Z2263	A	Pipe - Hose to Adaptor		1		
*	AEC	Z27-40417	D	Pipe		1		
*	APC	31385	D	Nut		2		
*		3105-154	D	Label		1	Use up 3103-10	
29	CLD	SF1161-3	D	Adaptor		1	Use up APC13226 Alt. ADV C21050	
30	AEC	Z2276	A	Pipe - Frame Bracket to Adaptor		1		
*	AEC	Z27-40430	D	Pipe		1		
*	APC	31385	D	Nut		2		
*		3105-165	D	Label		1	Use up 3103-23	



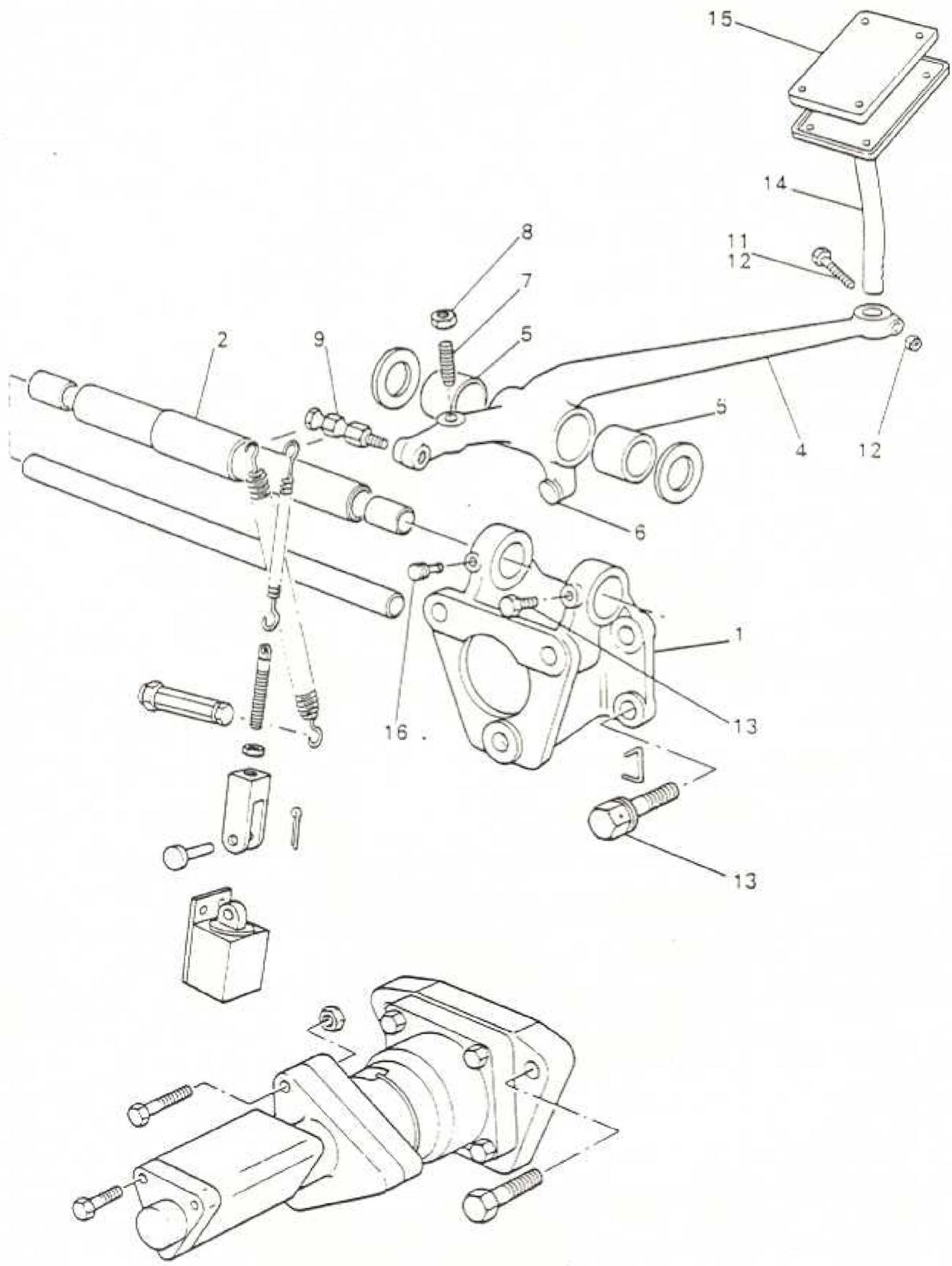
ITEM	MAN. REF.	PART NUMBER	ASSEMBLY - A		QTY.	REMARKS	ISSUE
			A/D	DESCRIPTION			
31	APC	27728	D	Adaptor - Pipe	1		
*		21661-036	D	Locknut	1		
*		21131-355	D	Washer	2		
32	AEC	Z2277	A	Pipe - Adaptor to Adaptor	1		
*	AEC	Z27-40431	D	Pipe	1		
*	APC	31385	D	Nut	2		
*		3105-166	D	Label	1	Use up 3103-24	
33	APC	27728	D	Adaptor	1		
*		21661-036	D	Locknut	1		
*		21131-355	D	Washer	2		
34	AEC	Z2290	A	Pipe - Adaptor to Hose	1		
*	AEC	Z28-40418	D	Pipe	1		
*	APC	31385	D	Nut	2		
*		3105-175	D	Label	1	Use up 3103-33	
35	APC	KL58707	D	Hose - Adaptor to Rad. Arm Brkt.	1	AEC 5117-64	
*		21661-036	D	Locknut	2		
*		21131-355	D	Washer	2		
36	APC	27728	D	Adaptor - Hose	2		
*	AEC	Z2-2216	A	Pipe - Adaptor to Adaptor (Rear)	1	In Place of Z2277, RML only	
*	APC	27728	D	Adaptor - Pipe	1	5177-49 RML Only	

ITEM	MAN. REF.	PART NUMBER	A/D	ASSEMBLY = A	DETAIL = D	QTY.	REMARKS
				DESCRIPTION			
*		21661-036	D	Locknut		1	
*		21131-355	D	Washer		2	
*	AEC	Z2-2217	A	Pipe - Body Adaptor to Adaptor		1	RML only
*	AEC	Z5-31383	D	Clip - Pipe		2	RML only
*		21461-221	D	Bolt		1	
*		21668-132	D	Nut		1	
*		21131-327	D	Washer		1	
37		H.P.1	A	Brake Pump		1	See M902 (E2)
*		5082-5		Pump (Plessey)			Part of Gearbox Unit



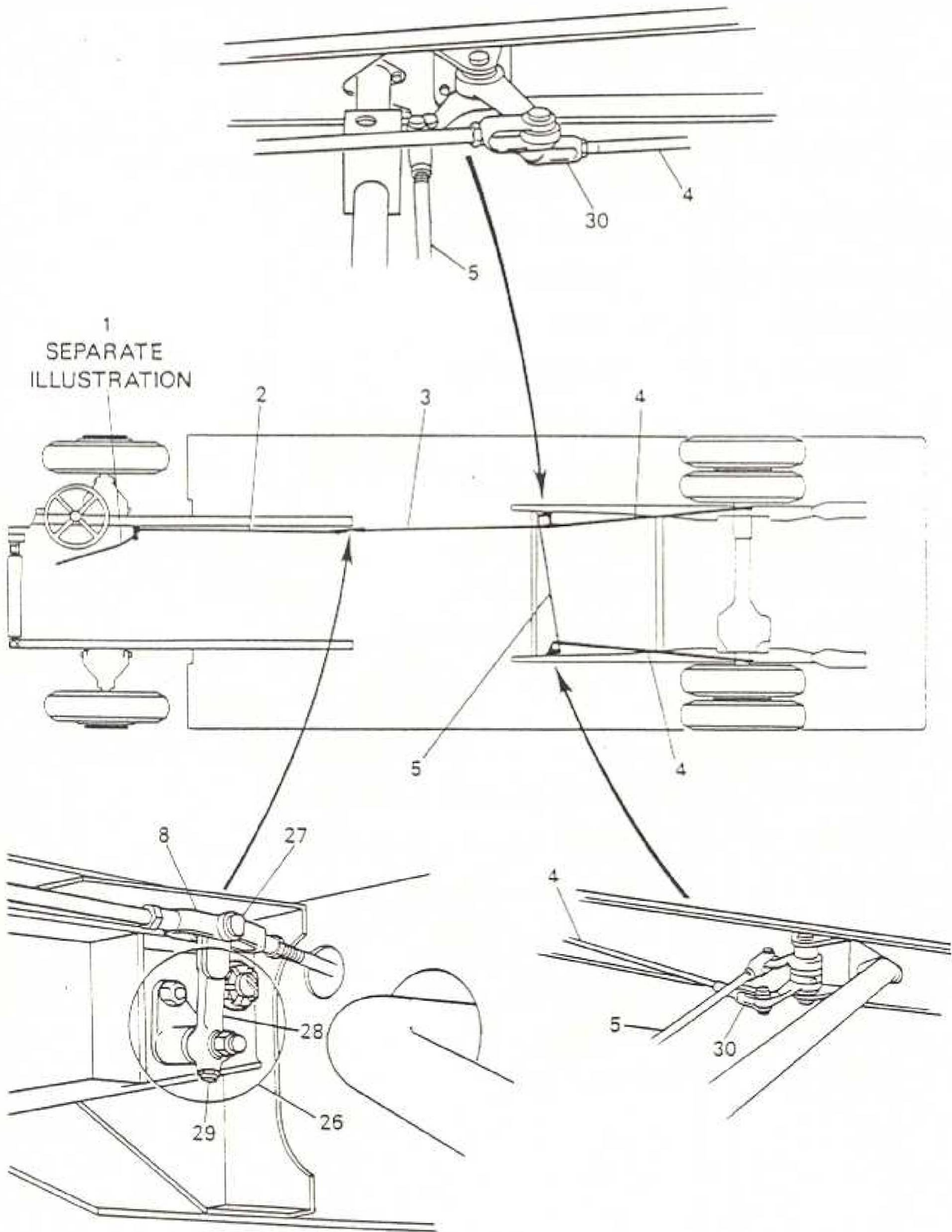
B10BRAKE SYSTEM
REAR END

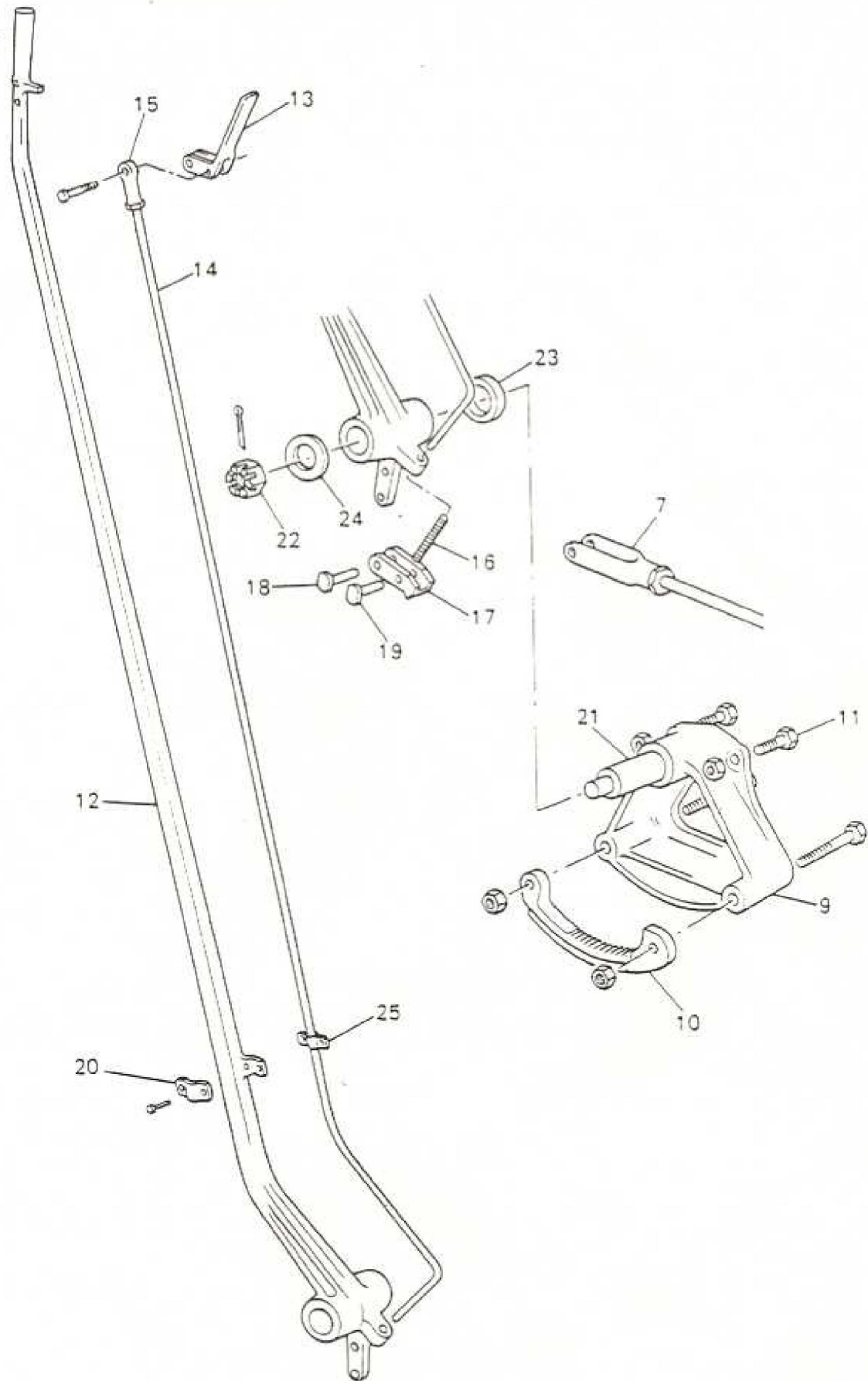
ITEM	MAN. REF.	PART NUMBER	A/D	ASSEMBLY - A	DETAIL - D	QTY.	REMARKS	ISSUE
				DESCRIPTION				
1	AEC	Z2279	A	Pipe - O.S. Cylinder		1		
*	AEC	Z27-40433	D	Pipe		1		
*		5117-30	D	Nut		2		
*		3105-168	D	Label		1	Use up 3103-26	
2	AEC	Z2280	A	Pipe - N.S. Cylinder		1		
*	AEC	Z27-40434	D	Pipe		1		
*		5117-30	D	Nut		2		
*		3105-169	D	Label		1	Use up 3103-27	
3		81-2256	D	Banjo - Pipe		2		
4	APC	237	D	Bolt - Banjo		2	Re-bin AEC 5117-14	
*		81-2123	D	Washer - Banjo		2	APC KL44519	
*		81-2347	D	Washer - Banjo		2	APC KL44524	
5	AEC	Z2278	A	Pipe - 3 Way Piece to Hose		1		
*	AEC	Z27/40432	D	Pipe		1		
*	AEC	5117-30	D	Nut		2	APC 31385	
*		3105-167	D	Label		1	Use up 3103-25	
6	AEC	5117-41	D	3 Way Piece		1	APC 37334	
*		21461-216	D	Setscrew - Piece		1	AEC 40-242	
*		21137-569	D	Washer - Piece		1	AEC 135-63	
7	AEC	G16929	D	Bracket - Flex. Hose		1		
*		21366-373	D	Bolt - Bracket		2		
*		21668-121	D	Nut - Bracket		2		
8	APC	27728	D	Adaptor - Flex. Hose		1		
*		21131-343	D	Washer - Adaptor		1		
*		21137-578	D	Washer - Adaptor		1		
*		21661-036	D	Locknut - Adaptor		1		
			A	Brake Cylinder N.S.		Ref		
			A	Brake Cylinder O.S.		Ref		



ITEM	MAN. REF.	PART NUMBER	A/D	ASSEMBLY - A	DETAIL - D	QTY.	REMARKS	ISSUE
				DESCRIPTION				
*		3061C-68	A	Pedal Gear Assembly		1	CA-FE1 only	
*		3061C-69	A	Pedal Gear Assembly		1	CA-FE3 only	
1		3061C-65	A	Pedal Bracket		1		
*	AEC	C22835	D	Bracket		1		
*		23472-021	D	Lubricator		1		
*		21262-315	D	Stud - Brake Valve		2		
2		3061C-71	A	Pedal Shaft and Bush		1		
*	AEC	C1-10543	D	Shaft - Brake Pedal		1		
*	AEC	Z4-10205	D	Bush		2		
3	AEC	Z3-43760	D	Lock Bolt		1		
*		21137-571	D	Washer		1	Use up 21137-512	
*	AEC	Z6-30693	D	Thrust Washer		2		
4		3061C-66	A	Brake Pedal Lever		1		
*	AEC	C2-10129	D	Lever - Brake Pedal		1		
5	AEC	Z10241	D	Bush - Lever		2		
6	AEC	Z1-47075	D	Thrust Button		1		
7	AEC	Z43498	D	Adjusting Screw		1		
8		21661-033	D	Locknut - Screw		1		
9	AEC	G22611	D	Anchor Pin - P.O. Spring		1		
10		21461-248	D	Clamp Bolt - Extension & Pad		1	CA-FE3 only	
11		21461-373	D	Clamp Bolt - Extension & Pad		1	CA-FE1 only	

ITEM	MAN. REF.	PART NUMBER	A/D	ASSEMBLY - A	DETAIL - D	QTY.	REMARKS	ISSUE
				DESCRIPTION				
12		21661-004	D	Nut - Clamp Bolt		1		
*		21137-574	D	Washer		2		
*	AEC	Z3-10236	D	Bush - Bolt - Ball Joint		1	CA-FE1 only	
*		3061C-72	A	Pedal Lever Bracket - Brake - Mini Switch		1	CA-FE1 only	
*	AEC	V7-7305	A	Bracket - Brake Pedal		1		
*	AEC	V2-16843	D	Bracket		1		
*	AEC	Z1-50481	D	Bass		1		
*		3061C-74	D	Operating Screw		1		
*		21661-033	D	Locknut		1		
13		Z20-30785	D	Setscrew - Pedal Gear Brk. to Steering Column		4		
*		21137-163	D	Washer - Setscrew		4	CA-FE1 only	
*		11412-128	D	Lockwire - Setscrew		A/R		
*		21461-232	D	Clamp Bolt - Extension to Lever		1		
*		21661-003	D	Nut		1	CA-FE3 only	
*		21137-571	D	Washer		2	Use up 21137-512	
14		3061C-67	A	Brake Pedal Extension & Pad		1		
*	AEC	C1-1804	D	Extension & Plate - Pedal		1		
*	AEC	C25554	D	Extension Rod - Pedal		1		
*	AEC	C10358	D	Plate - Rod - Pedal		1		
15		3061C-58	D	Pad - Extension		1		
*		21164-102	D	Rivet - Pad		4		
16		23472-021	D	Lubricator		1		





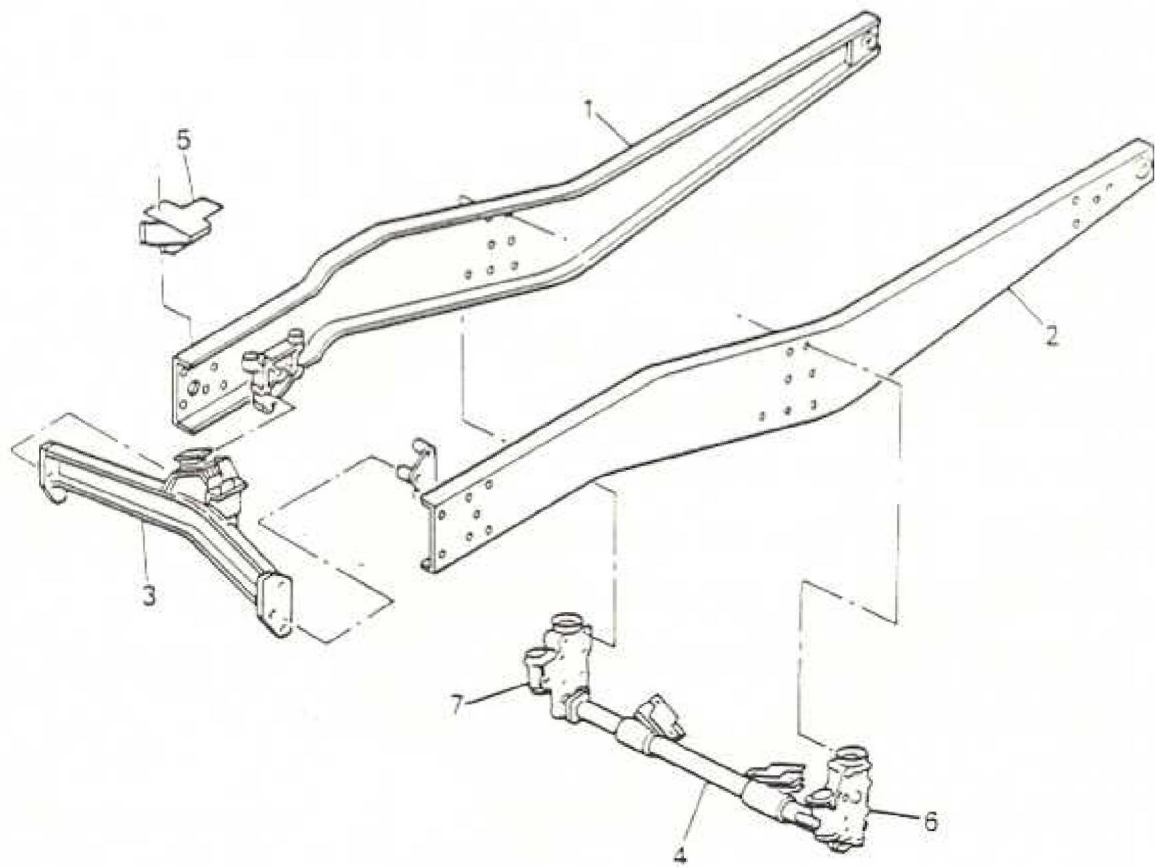
ITEM	MAN. REF.	PART NUMBER	ASSEMBLY * A		QTY	REMARKS	ISSUE
			A/D	DETAIL * D DESCRIPTION			
9	AEC	G16925	D	Bracket - Handbrake Lever	1	-	
11		21461-260	D	Bolt - Bracket to Frame	2		
*		21461-332	D	Bolt - Bracket & Quadrant to Frame, 5 3/8" long	1		
*	AEC	Z24-30785	D	Bolt, 6" long	1		
*		21661-005	D	Nut	4		
*		21137-576	D	Washer	8	Use up 21137-514	
10	AEC	G13549	D	Quadrant - Handbrake Lever	1		
1	AEC	G1-0168	A	Handbrake Lever	1		
12	AEC	G2-0127	A	Handbrake Lever	1		
*	AEC	G1-0196	D	Handbrake Lever	1	Use up G1-0161	
*	AEC	Z10609	D	Bush - Lever - Brake Rod	1		
*	AEC	Z10178	D	Bush - Pawl	1		
*	AEC	Z2/10104	D	Bush - Pivot Pin	2		
*		3065G1374	D	Bush - Lever	1	2nd. STD for	
*		3065G2183	D	Bush - Pawl	1	Z10609 and Z10178 ADV. CE1017	
13	AEC	G10706	D	Trigger Lever	1	Use up G10703	
*	AEC	Z5-30712	D	Bolt - Trigger	2		
*	AEC	Z1-32090	D	Bar Nut - Bolt	1		
14	AEC	G10377	D	Trigger Rod	1		
15	AEC	G16606	D	Eye - Rod	1	Use G16624 when rec.	
*	AEC	Z2-32006	D	Locknut - Eye	1		

ITEM	MAN. REF.	PART NUMBER	A/D	ASSEMBLY - A	DETAIL - D	QTY.	REMARKS	ISSUE
				DESCRIPTION				
16	AEC	Z45410	D	Spring - Rod		1		
17	AEC	G10224	D	Pawl - Spring Rod		1		
18	AEC	G14766	D	Pin - Small Pawl, 5/16" Dia.		1		
*		21621-141	D	Nut - Pin		1		
19	AEC	G14767	D	Pin - Large Pawl, 7/16" Dia.		1		
*		21621-143	D	Nut - Pin		1		
*		11412-128	D	Lockwire		A/R		
20	AEC	G14503	D	Clip - Trigger Rod		1		
*		21311-087	D	Screw - Clip		2		
*		21137-008	D	Washer - Clip		2		
*		23472-021	D	Lubricator - Handbrake Lever		1		
25	AEC	Z7-31344	D	Stop - Trigger Rod		2		
*		21366-373	D	Screw - Stop		2		
*		21668-121	D	Nut - Stop Screw		2		
*		21131-323	D	Washer - Stop Screw		2		
21	AEC	G2-13718	D	Pivot Pin - Pin to Frame Bracket		1		
*		21661-046	D	Nut - Pivot Pin		1		
*		21131-343	D	Washer - Pivot Pin		1		
*		21122-055	D	Split Pin - Pivot Pin		1		
23	AEC	Z6-30699	D	Thrust Washer		1		
22		21661-047	D	Nut - Lever to Pivot Pin		1		
24	AEC	Z6-30698	D	Washer - Lever to Pivot Pin		1		
*		21122-066	D	Split Pin - Lever to Pin		1		

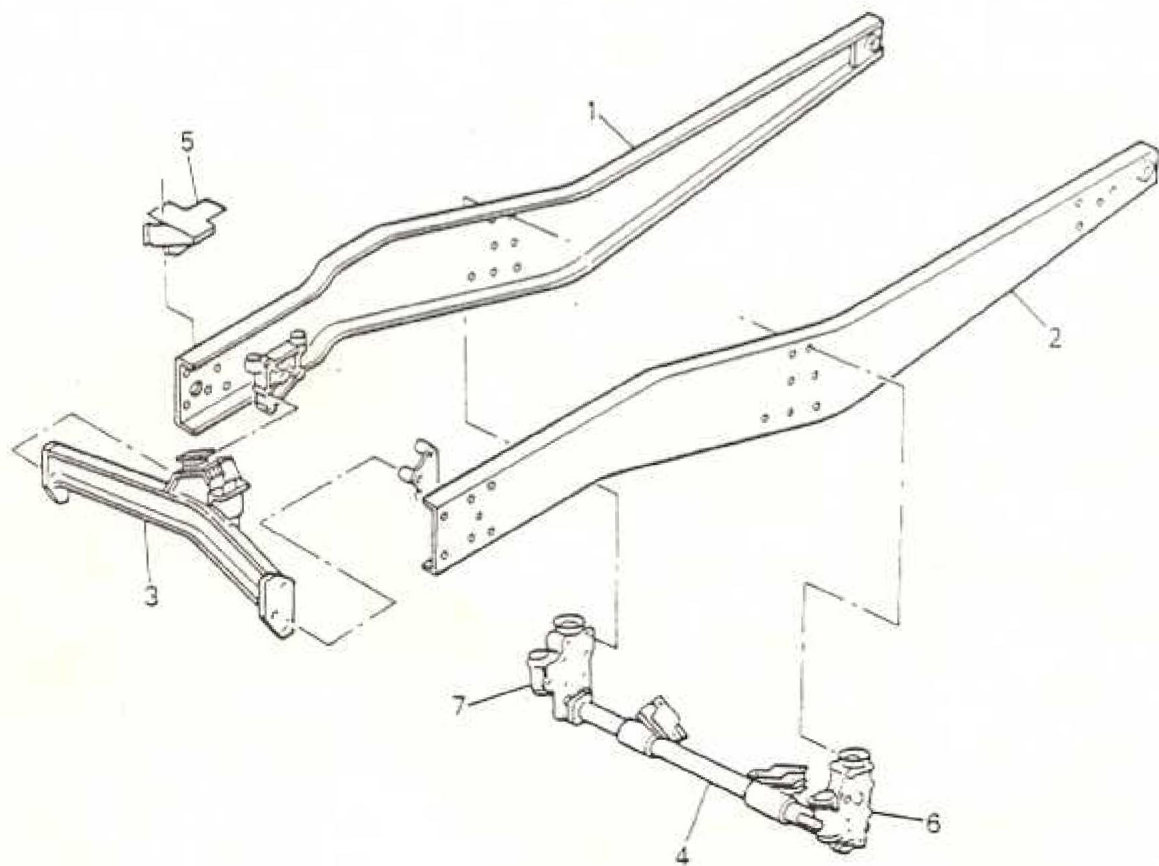
ITEM	MAN. REF.	PART NUMBER	ASSEMBLY = A DETAIL = D		QTY.	REMARKS	ISSUE
			A/D	DESCRIPTION			
2		3065G-1590	A	Handbrake Rod - Lever to Swing Lever	1		
*	AEC	G3-12704	D	Rod	1		
7	AEC	G14934	D	Fork End	1		
8	AEC	G1-14904	D	Fork End	1		
*		21621-125	D	Locknut - Fork End	2		
*	AEC	G1-14708	D	Pin - Fork End, Short	1		
27	AEC	G1-14716	D	Pin - Fork End, Long	1		
*		21621-143	D	Nut - Fork End Pin	2		
*		21122-010	D	Split Pin - Fork End Pin	1		
*		21122-034	D	Split Pin	1		
26		G2-4843	A	Swing Lever Assembly	1		
*		3065G-2150	D	Bracket - Swing Lever	1	Use up AEC G2-13837	
*	AEC	G2-13719	D	Pivot Pin - Lever	1		
*		21661-045	D	Nut	1		
*		21131-336	D	Washer	1		
*		21122-034	D	Split Pin	1		
28		3065G2161	A	Swing Lever & Bush Assy.	1		
29		23472-021	D	Lubricator	1		
*		21366-426	D	Bolt - Lever Assy to Frame	2		
*		21661-005	D	Nut	2		
*		21137-576	D	Washer	4	Use up 21137-516	
*	AEC	G1-14740	D	Pin - P/O Spring to F/Brake	1		
*		21668-125	D	Nut - Pin	1		
*	AEC	Z2-44887	D	Distance Piece	1		

ITEM	MAN. REF.	PART NUMBER	A/D	ASSEMBLY - A	DETAIL - D	QTY.	REMARKS	ISSUE
				DESCRIPTION				
3	-	3065G-1589	A	Handbrake Rod - Swing Lever to Cross Rod		1	CA-CD1 & CA-CD2 only	
*	AEC	G3-12768	D	Rod, 5" = 3 3/8"		2		
*	AEC	G14937	D	Fork End - Rod		2		
*		21621-125	D	Locknut - Fork End		2		
27	AEC	G14761	D	Pin - Fork End - Cross Rod		1		
*		21621-143	D	Nut - Pin		2		
*		21122-010	D	Split Pin		2		
*	AEC	Z2-44820	D	Distance Piece - Fork End		2		
3		3065G-1696	A	Handbrake Rod - Swing Lever to Cross Rod		1	In Place of 3065G-1589,	
*	AEC	G1/12796	D	Brake Rod, 7" - 7 1/4"		1		
*	AEC	G1-14937	D	Fork End		1		
*		21621-125	D	Locknut		2		
*	AEC	G28406	D	Rod Steady Ball		1		
*	AEC	G2/13825	D	Bracket - Steady		2		
*	AEC	G1/14994	D	Fork End		1		

ITEM	MAN. REF.	PART NUMBER	A/D	ASSEMBLY - A	DETAIL - D	QTY.	REMARKS	ISSUE
				DESCRIPTION				
4		3064F-249	A	Brake Rod - Cam Lever Bell Crank		2		
*	AEC	G3-12741	D	Brake Rod		1		
*	AEC	G1/14966	D	Fork End		1		
30	AEC	G14985	D	Fork End		1		
*		21621-125	D	Locknut - Fork End		2		
*	AEC	G28406	D	Steady Ball		1		
*	AEC	G2/13825	D	Bracket - Steady Ball		2		
5		3064F-250	A	Brake Rod - Bell Crank		1		
*	AEC	G3/12795	D	Cross Rod		1		
*	AEC	G14985	D	Fork End		2		
*		21621-125	D	Locknut - Fork End		2		
*	AEC	G1-14708	D	Pin - Fork End		4		
*	AEC	G1-14778	D	Pin - Fork End		2		
*		21621-143	D	Nut - Pin - Fork End		6		
*		21122-010	D	Split Pin - Nut - Fork End		6		
*		21366-399	D	Bolt - Brake Rod Steady Brk.		4	AEC 121-335	
*		21131-329	D	Washer - Brake Rod 4 Steady Brk.		AEC 134-4		
*		21668-123	D	Nut - Brake Rod Steady Brk.		4	AEC 90-333	
*		3065G-1741	A	Operating Rod		2	R.P. Adjuster	
*	AEC	G7306	D	Operating Rod		1		
*	AEC	5131-6	D	Heim Unibal Joint		1		
*		21161-031	D	Locknut		1		
*		21122-010	D	Split Pin		2	AEC 100-4	
*		21131-323	D	Washer		2	AEC 134-2	
			A	Brake Cylinder		Ref	See	
			A	Brake Cylinder		Ref	See	



ITEM	MAN. REF.	PART NUMBER	A/D	ASSEMBLY - A	DETAIL - D	QTY.	REMARKS	ISSUE
				DESCRIPTION				
		3079Y-434	A	Chassis Frame - Basic Assy.		1		
1	AEC	Y10-6603	A	Frame Sidemember R/H		1		
2	AEC	Y10-6604	A	Frame Sidemember L/H		1		
3	AEC	Y1-1972	A	Engine Front Crossmember		1	Inc. Engine Support Bracket	
	AEC	Y1-25669	D	Packing Pieces - R/H		1		
	AEC	Y1-25670	D	Packing Pieces - L/H		1		
		21461-324	D	Bolt		3		
		21461-323	D	Bolt		3		
		21461-262	D	Bolt		1		
		21668-125	D	Nut		7		
4	AEC	Y0575	A	Crossmember - Engine Rear		1	Inc. Engine Mountings L/H & R/H	
		21461-322	D	Bolt - Crossmember to Bulkhead		8		
		21668-125	D	Nut - Bolt		8		
5	AEC	N16244	D	Bracket - Radiator O/S		1		
		21366-399	D	Bolt		4		
		21668-123	D	Nut		4		
6		3079Y-428	A	Bulkhead Brk. & Pin - L/H		1		
7		3078Y-429	A	Bulkhead Brk. & Pin - R/H		1		
		21461-266	D	Bolt - Brk. to Frame		6		
		21461-374	D	Bolt - Brk. to Frame		2		
		21461-269	D	Bolt - Brk. to Frame		4		
		21668-125	D	Nut		14		
	AEC	Z6-30685	D	Washer		14		
	AEC	Z24-30737	D	Bolt		2		



ITEM	MAN. REF.	PART NUMBER	A/D	ASSEMBLY - A	DETAIL - D	QTY.	REMARKS	ISSUE
				DESCRIPTION				
<u>ATTACHING PARTS (TO BODY STRUCTURE)</u>								
REAR END								
	AEC	Z21-30759	D	Bolt		2		
	AEC	90-340	D	Nut		2		
	AEC	134-11	D	Washer		2	After Mod. 123	
	AEC	Z6-30689	D	Cone				
	AEC	Y31404	D	Body Mounting				
FRONT END								
	AEC	Z21/30760	D	Bolt		2		
	AEC	90/340	D	Nut		2		
	AEC	134-11	D	Washer		2	After Mod. 123	
	AEC	Y1/13904	D	Bulkhead Bracket		2		
	AEC	Z14-735	D	Cone		2		